

Seeley
Swan

MONTANA HISTORICAL SOCIETY LIBRARY
325 N. ROBERTS ST
HELENA, MT 59601-4514

50¢

Vol XVIII, No. 33

"Voices from the Valley"

Thursday, December 18, 2003

Appreciation Day with Santa Claus
at the Rich Ranch this Sunday

An 'Eagle'
has landed



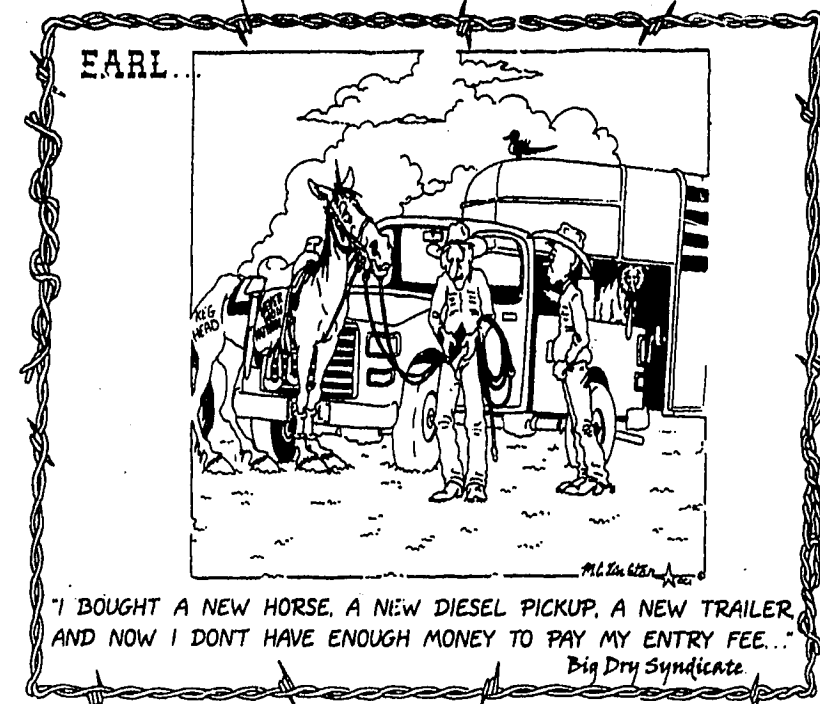
'Tis the Season

Many homes are festively decorated for the holiday season. This home, owned by Don and Eileen Schaff, is especially attractive. It can be viewed at 100 Black Bear Drive, just off Whitetail Drive a long block from Wold's Valley Market.

P. Swan Smith photo

email: pathfinder@montana.com

www.seeleyswanpathfinder.com



"I BOUGHT A NEW HORSE, A NEW DIESEL PICKUP, A NEW TRAILER, AND NOW I DON'T HAVE ENOUGH MONEY TO PAY MY ENTRY FEE..."
Big Dry Syndicate

GARY NOLAND, EDITOR PUBLISHER'S NOTICE MILLIE NOLAND, ADVERTISING

Seeley Swan Pathfinder (ISSN 0894-2994, USPS 000-919) is published weekly by Pathfinder Press, Inc., Box 702, Seeley Lake, MT 59868 (ph. 406/677-2022). Area served is Seeley Lake, Swan Valley and neighboring communities. Distribution is by mail subscription (\$25 per year in Missoula, Lake or Powell County; \$35 per year elsewhere in U.S.) and by newsstand sales. Periodicals postage paid at Seeley Lake, MT. Postmaster: Send address changes to: Seeley Swan Pathfinder, P.O. Box 702, Seeley Lake, MT 59868-0702.

Editorial Comment

Chips . . . bits & pieces

There's not a lot we can add to the story about the stolen Jack Russell terrier female puppy, a constant companion to a brain-injured teenager in Potomac. The crime, in this case, has effects beyond the normal petty theft, and probably beyond what the thief ever anticipated. It's all especially poignant as we near the height of the Christmas season, a time for giving, not taking. Maybe somehow that spirit can touch the heart of someone who has caused great heartache to a young boy and prompt a return of the puppy to its rightful owner. It will make Christmas feel a lot better all around.

Michael Biggins has been awarded the Eagle Scout Award. That is scouting's highest award and one that is not lightly earned. Michael is to be congratulated on this highest of achievements, and we congratulate his parents, Mike and Liz Biggins, who have worked with him and supported him in this effort. We expect an announcement in the next couple of months of another Eagle Scout Award to a local scout. Nothing else could speak any louder about the quality of the scouting program here and the leaders who teach these kids.

APPRECIATION DAY AT THE RICH RANCH THIS SUNDAY, DEC. 21. This is a fun day and everyone is invited. Bring the kids for an appearance by Santa Claus. Savor piping hot chili around a campfire, take a horse drawn sleigh ride, or a snowmobile ride. There's all kinds of fun things and good company at the Rich Ranch in Woodworth Meadows. Take Woodworth Road off Highway 83 and Salmon Lake and go east about 7 miles, just past Kozy Komer Steakhouse. See details in an ad elsewhere in this issue.

—Gary Noland

Seeley Lake Elementary Holds Christmas Store

The Christmas Store will be open at Seeley Lake Elementary School on Friday, December 19 from 1:00 to 3:00 p.m. Any help or donations will be gladly accepted.

Donations of new or gently used items suitable as gifts for moms, dads, and kids can be dropped off at Seeley Lake Elementary. (Dad gifts are always needed most.) Wrapping helpers are needed for the day of the Store. (Around 1000 items are usually wrapped in two hours.) Monetary donations are also gladly accepted.

For more information, call Patti Bartlett at 677-2552 in the evenings.

\$1,000 Reward offered puppy stolen in Seeley Lake

On December 10th, Kelsey Brewer's puppy was stolen out of his father's unlocked white 1999 Ford Crew Cab diesel pickup while it was parked at Rovero's. His father, Eddy Brewer, said that \$25 was also taken along with the puppy.

Kelsey, a 14-year-old kid suffered a serious brain injury two years ago when he fell from the back of a pickup truck. Over the past two years, he went through five surgeries and had to learn how to walk, talk and write.

Now he's torn apart over the theft of his buddy that he slept with every night. Regardless of the reason the thief took the puppy, the family is pleading for its return.

"It's been awful," Shannon Brewer said. "I went to Seeley on Saturday and put up signs. The sign my husband had posted on Wednesday was gone. The poster I put up at the Valley Market was taken down not long after I put it up. Because of the signs disappearing, I'm just sure the puppy is in Seeley Lake. We aren't going to press charges, we just want our son's puppy back."

"I'd be so happy if we could get her back before Christmas. That would be the best



Christmas present ever."

Jessie Belle is a tiny puppy, white with large brown spots; a brown face with brown folded ears and a white streak on her nose. She has a cropped tail and a chubby belly.

If you have information about Jessie Belle, please call Shannon Brewer at either (406) 244-5797 or (406) 544-4793. If you have the puppy, you may drop her off at Paws Up Safe House here in Seeley and no questions will be asked. You may also call Elinor Williamson here in Seeley at 677-2174.

That puppy was a positive part of a struggling boy's life; please help this family get Jessie Belle back.

Rules for all Employment opportunities with Grizzly Bear DNA project

To the driver of the pickup at Rovero's:

After I observed you park in the handicapped parking space at Rovero's last Sunday (14 Dec) around 12:15, I entered the store to ask you just what your handicapped condition was, since you had neither a handicapped license plate nor a handicapped permit hanging in the windshield, and you had no difficulty moving around. In a less than pleasant tone, you stated that I "shouldn't worry myself about that." I have to take issue with you on that. I do worry about those in society who think the rules apply to others. The lesson you are teaching the young man who got out of your truck with you and went across the highway while you were in Rovero's is questionable. I thought a bit and came to the realization that your handicap is the fact that you can't read.

Steve Thompson
Seeley Lake, Montana

This month the U.S. Geological Survey and Forest Service are accepting applications for about 150 temporary positions to be filled June through September 2004 to help with the large-scale Northern Divide Grizzly Bear Project, a study to estimate the number of grizzly bears in the Northern Continental Divide Ecosystem of northwestern Montana.

Through the collection of grizzly bear hair samples, the study will use DNA technology to estimate the population size. The field-based positions include crew leaders, crew assistants and quality assurance staff. All positions require work in remote, backcountry areas setting up hair snag sites, surveying trees bears naturally rub against, and collecting hair samples.

The USFS Flathead National Forest will fill about 70 positions; GS-6, GS-5 and GS-4 biological technician positions. The other jobs are being offered through the

U.S. Geological Survey; student contractor and volunteer positions. "We encourage qualified students and residents living near and around the study area to apply and bring their knowledge of the local environment to the positions. The volunteer positions offer an excellent opportunity to gain research experience," said Project Leader Kate Kendall.


The study area includes Glacier National Park and the Bob Marshall Wilderness and lies north

of US Highway 200, east of Flathead Lake and Highway 93, west of the communities of Browning and Choteau and Highway 89 along the Rocky Mountain Front, and is bound to the north by the Canadian border. Positions are based throughout this region.

For specific details about the offered positions, how to apply and application deadlines, visit the study's employment web site at <http://www.nrmssc.usgs.gov/jobs.htm>

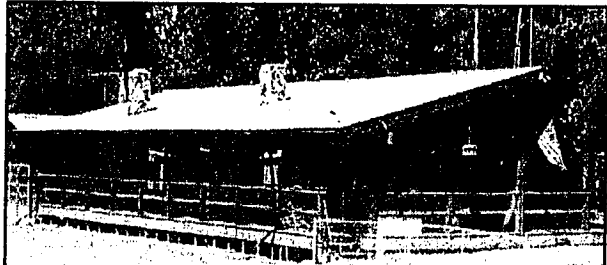
Superb drama!

Dear Editor,
The Seeley-Swan High School drama production, Arsenic and Old Lace, last Tuesday night was wonderful! If you missed it you missed a real treat. The casting was perfect and the students did a terrific job with the complicated, but delightful play. Way to go! Sincerely, Donna Love



GREAT BEAR PROPERTIES
677-3337
LAZY PINE MALL
HIGHWAY 83
South End of Town
On the Pond

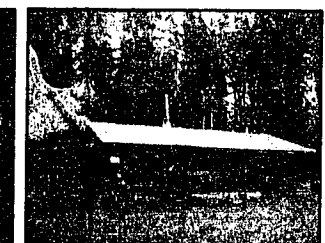
P.O. Box 569 • Seeley Lake MT 59868
FAX 406/677-3060
1-800-800-4260
greatbearproperties.com — email: info@greatbearproperties.com
Kim Koppen: Broker/Owner • Jolie Losey: Sales Associate • Janice George: Sales Associate



195 Whitefish Drive 2 bedroom, 2 bath, log home on 2.3 acres. 2 fireplaces, wet bar, gourmet kitchen. Tongue and groove cedar throughout. \$179,900.



Lot 118 Phase 4 Stagecoach: Mountain view lot on the Double Arrow! 2.27 acres, sloped and timbered. Driveway is in and building site has been cleared. \$69,500



3694 Hwy 83N Affordable home! 3 bedroom, 1.5 baths on State lease land. 24x30 garage/shop, fenced back yard. \$69,900

COMMUNITY CALENDAR

Community members are invited to submit dates, times and locations of events, meetings and other happenings. Submission deadline: Friday, 5 p.m.; call 677-2022

<p>PUBLIC MEETINGS Drifters, 3rd Wed. 7pm, S.L. Comm. Hall S.L. Sewer Dist, 3rd Thur, 5pm, Pyramid Mtn. Lbr. Home school support group, 3rd Thur, 7pm, Faith Chapel S.L. Water Bd, 4th Mon, 5pm, Glen's Auto Swan Valley Comm. Club, 4th Mon, 7pm, Comm. Hall S.L. Refuse Bd, 4th Mon, 7pm, fire hall VFW, 4th Tues. 7pm, S.L. fire hall Clearwater Resource Council, 4th Tues. 6:30pm, Sr. Cit. Ctr. Lions Club, 4th Wed. 6:30pm, S.L. Comm. Hall</p> <p>WEEKLY EVENTS Alcoholics Anonymous: (help for those with a suspected drinking problem) -Condon: Faith Lutheran Church, every Sunday, 3pm -Seeley Lake: Every Wed, 7pm, Living Water Catholic Church, on SOS Rd. For info: 677-3271 or 677-2892. *Potomac: 406-244-5204 Alateen: (help for teenagers of alcoholic families) Hotline 677-2753</p>	<p>Al-Anon: Every Thurs, 7pm, Holy Cross Lutheran Church, 1655 Airport Rd., 677-0016 Overeaters Anonymous: every Thursday, 7pm, Faith Lutheran Church, Condon, 754-2371 Missoula County Commissioners Public Mtg, every Wed, Courthouse Annex, Room 201, Missoula, 1:30 pm. T.O.P.S. Mtg, every Thurs, Mission Bible Fellowship bldg., Seeley Lake, 10am. MONTHLY EVENTS FAIM Outreach Specialist, 1st & 3rd Thur, 9:30-3, Seeley-Swan Med. Ctr. WIC Clinic, 1st Tues., 9:20-3:30, Faith Chapel Pinocle, every 1st & 3rd Sat., Senior Citizens Center, 7 pm DUMPSTER TRANSFER SITE: Winter hours (Oct-Apr) - Wed & Sat, 10am-4pm, 677-3809 SSTEP Crisis Help Line: 677-3177. Domestic violence, sexual assault, child abuse, community outreach & education Food Bank: Tues. 12-4 pm, next to Multi-purpose Room, S.L. Elementary, 677-5025</p>	<p>Loving Hearts Thrift Store: Open Wed, 11:00-4:00, Sat, 11-3, 677-5683 (emergency 677-2110) Seeley Lake Community Hall: For hall rental, call Cheri Thompson, 677-2454 Seeley Swan Stage: Local trips Mon, Wed, Thurs & Fri. Seeley Lake trip Tues. Please call 677-2018 Monday morning to schedule rides. LIBRARIES: Seeley Lake Public Library (Seeley-Swan High School) Mon-Fri, 8 a.m.-3 p.m. (closed 11 a.m.-noon), Wed, 3-8 p.m., Sat, 10 a.m.-3 p.m., 677-2224 ext. 5741 Swan Valley Library (Condon) Tues, 11am-4pm; Wed, 11am-7pm; Fri, 11am-4pm Family History Ctr.-LDS Church: Open Wed, 11am-3pm. Call 677-2642 or 677-2575. EMERGENCY: Dial 911 if you live in Seeley Lake, Condon, Greenough or Ovando. Swan Lake Residents: 886-2324 (Fire, QRU or Search & Rescue) or 1-406-752-6161 for Sheriff, Highway Patrol.</p>
---	--	--

just in time for
CHRISTMAS

20% OFF
All T-Shirts & Sweat Shirts

10% OFF
Bears & Moose Items

Lots of Toys
\$2 to \$6

**Hundreds of Movie Titles
\$3 to \$10**

Happy Holidays!

Seeley Lake, Montana **GOOD TIME VIDEOS CLOTHING GIFTS** (406) 677-2140

FWP Plans Purchasing Conservation Easement from DNRC

By Mike Thompson

Things don't change very much on the Blackfoot-Clearwater Game Range.

But, the map sure does.

And, it's because the map keeps changing that things keep staying the same. Still about 1,100 elk winter on the Game Range. Still about 1,100 mule deer and white-tailed deer are there as well. Still they winter in native habitat, as they have for hundreds of years, undisturbed by housing developments in an area where housing developments are expanding around us.

Now, if the map still showed private land across most of the Game Range, as it did only a few short years ago, it would be hard to imagine that things would stay the same on the Game Range for much longer. But, thanks to the cooperation and leadership of Plum Creek Timber Company, most of the Game Range is now in state, or soon to be state, ownership. By "state" I mean either Fish, Wildlife and Parks (FWP) or the Department of Natural Resources and Conservation (DNRC).

The transactions that led to the map changes since 1998 have been packaged under the heading of the 50th Anniversary Project. And, yet another facet of the longest 50th anniversary on record is now being developed.

That is, FWP and DNRC are preparing a proposal for FWP to purchase, and for DNRC to sell, a conservation easement on the lands owned by DNRC within the 50th Anniversary Project boundary.

These are the lands that DNRC obtained from Plum Creek in 2001 in the Phase 2 land exchanges. They also include the lands that FWP traded to DNRC in 2002, also as part of the Phase 2 land exchanges. Finally, they include the lands that DNRC already owned for many years within the interior of the Game Range.

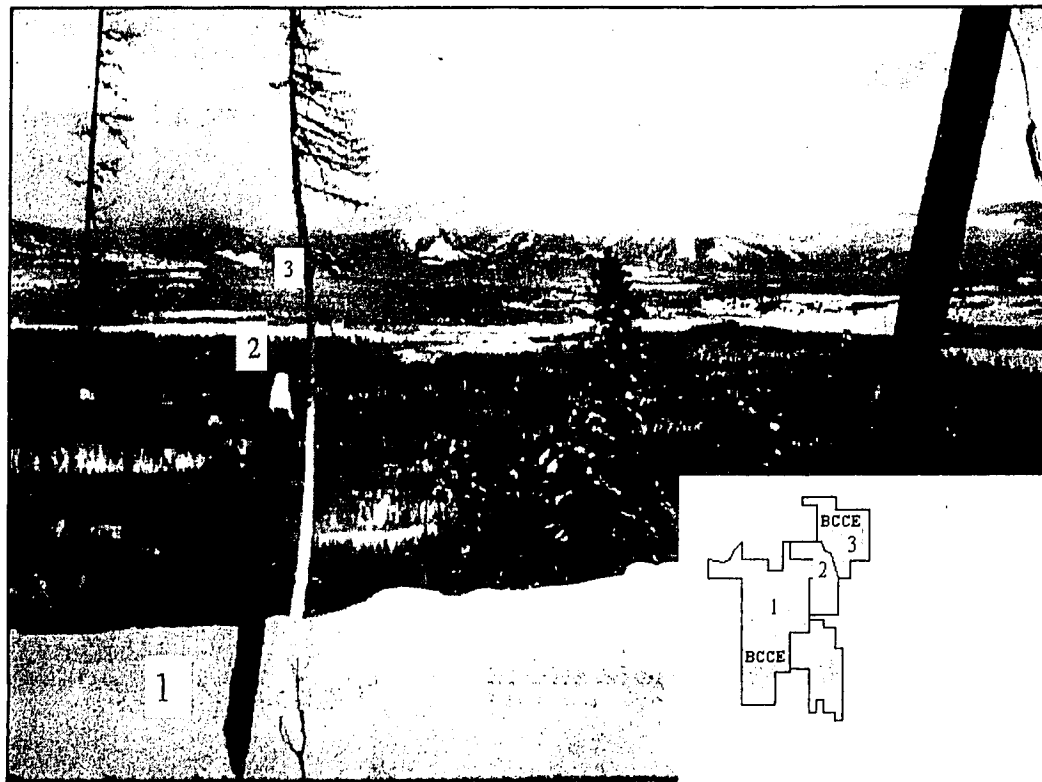
The grand total amounts to

approximately 6,850 acres of DNRC property within the Game Range.

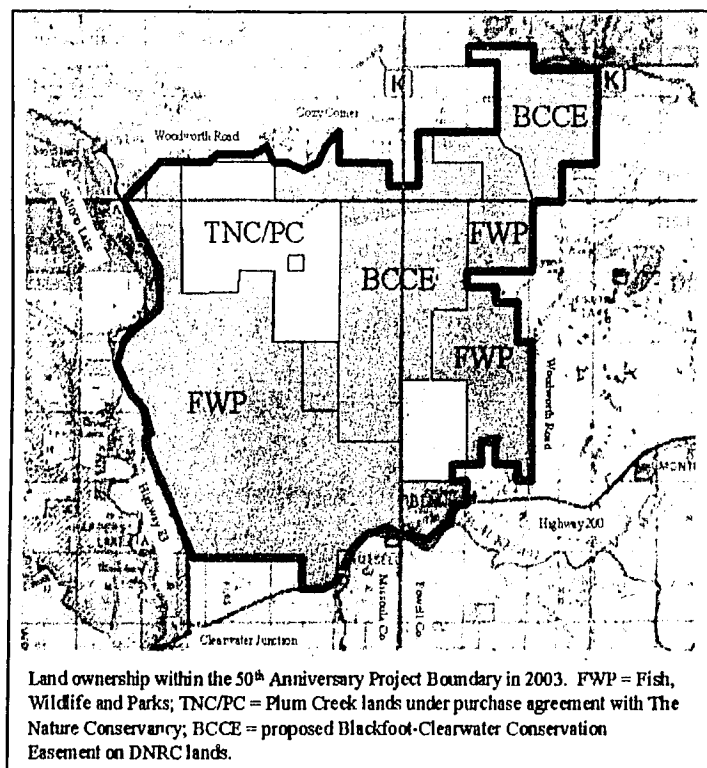
The purpose of the conservation easement would be to keep things the same. In order for this to be guaranteed, FWP proposes to compensate the state school trust for the potential revenues that DNRC would give up by agreeing to never develop the Game Range inholdings. The legal instrument for this agreement would be a conservation easement.

The proposed conservation easement would keep things the same. DNRC would continue to manage forests on its lands in the Game Range, and would work with FWP to help accomplish forest habitat improvements on adjacent FWP lands. Public access and recreation on the Game Range would continue to be managed as always, on DNRC property as well as on FWP.

And, the elk and deer will never know the difference. That's the point. Watch for a news release—maybe in this issue of the Pathfinder, maybe in another—to find out when a draft environmental assessment will be available, and when a public meeting will be held. Or you can just call me at 542-5523.



Overview of the proposed Blackfoot-Clearwater Conservation Easement from Boyd Mountain (1), looking across the old Dreyer haymeadows (2) to the forests on the old Dreyer Ranch above Woodworth Road.



Land ownership within the 50th Anniversary Project Boundary in 2003. FWP = Fish, Wildlife and Parks; TNC/PC = Plum Creek lands under purchase agreement with The Nature Conservancy; BCCE = proposed Blackfoot-Clearwater Conservation Easement on DNRC lands.

Senior Party fundraisers

The parents of the 2004 graduating class at Seeley Swan High School are planning some fundraisers to help meet the expenses of the Senior All Night Party that will be held Graduation night, May 30, 2004. A different quilt will be given to the winning raffle ticket at every home Boys and Girls Basketball games.

Tickets will also be available at these home games to sign up for your choice of the many items available.

Tickets are \$1 apiece and 6 for \$5. A silent auction will be going on too for a variety of items. The drawing for these items will be at the winter banquet held at the high school on March 9, 2004.

Come out to the Basketball games and support the Blackhawks and view the many items to win, along with many baked goodies for sale.

Senior Nutrition Program Menu

The following meals will be served next week promptly at noon at the Seeley Lake Senior Citizens Center. Reservations please - 677-2008. Call before 10:00 a.m.

Homemade soup & salad served daily.

- Monday, December 22 Turkey Roast
- Tuesday, December 23 Spaghetti
- Wednesday, December 24 Baked Chicken
- Thursday, December 25 Closed for Christmas
- Friday, December 26 Closed
- Free blood pressure testing every Wednesday.

Mountain Lakes Presbyterian Church
Christmas Eve Candlelight Service 7:00 pm
 Candles, Christmas carols, an ornament per family, & the celebration of Holy Communion. Come & celebrate the birth of our Savior.
 3292 Hwy 83 North † 677-2984

Ladyhawks unbeaten, Blackhawks lose first

The unbeaten Ladyhawks chalked up two more lop-sided wins this past week, while the Blackhawks lost a squeaker to Darby and then rolled over Lincoln.

The Ladyhawks went on a scoring spree on the home court, rolling up 90 points while holding Darby at 49.

The Ladyhawks had 10 players scoring with Hayley Blackburn leading the team at 17 points. Also in double figures were Tatum Hoehn 14, Sarah Madinger 13, Jessa Linford 12, and Kaylee Williams 11.

'Giving Tree' at Wold's VM

The "Giving Tree" has been set up at Wold's Valley Market in Seeley Lake to help some of the less fortunate children in our area.

Please visit the "Giving Tree" and help a child have a better Christmas. Parents of the children have indicated clothing items and toys that are needed and wanted.

There is a card on the tree for each child listing age, gender, and gift

to purchase. All you need to do is select a card and sign it out at the check stand.

Purchase and bring the unwrapped, boxed gift (with the card) to Valley Market by no later than December 16. The gifts will then be wrapped, labeled, and delivered to the families a few days before Christmas. Enjoy the pleasure of giving and help make a child happy!

The Blackhawks couldn't find the basket in the final seconds when they lost at Darby 53-52 after trailing by 7 points, 32-25, at halftime.

Tanner Marlatt led the Blackhawk offense with 15 points. Cody Hard finished with 9 points, Derk Hard 8, Bryce Freyholtz 8, Ryan Nash 7, Ben Slaght 4.

At Lincoln the Ladyhawks coasted to a 69-44 win after leading 44-17 at halftime. Kaylee Williams led the Ladyhawks with 18 points. Sarah Madinger and Nicole Bostwick were in double figures with 14 and 12, respectively. Tatum Hoehn, Jessa Linford, and Sadie Linford each had 7 points; Basia Kobylenski and Hayley Blackburn finished with two each.

The Blackhawks play the 5-B favorite Superior there on Friday, and then return home against Deer Lodge on Saturday to finish pre-holiday play.

Looking for some free wholesome family fun?

Gather your ice skates, family and friends and enjoy the fun at the Lions Club Park. The ice has been cleaned and is ready for skating. We look forward to seeing you there.

Lions Club Welcomes Skaters

Looking for some free wholesome family fun?

Gather your ice skates, family and friends and enjoy the fun at the Lions Club Park. The ice has been cleaned and is ready for skating. We look forward to seeing you there.

Pop's Specials

- Thursday - Chicken Fajita Wraps with Rice & Beans - \$7.95
- Friday - Shrimp Platter - \$7.95
- Saturday - Chuck Wagon Steak - \$7.95
- Sunday - Crispy BBQ Chicken - \$7.95
- Monday - 15" Pepperoni Pizza with 2 medium soft drinks & bag of popcorn - \$10.00
- Tuesday - Gnarly Nacho Night - \$7.95
- Wednesday - Steak & Veggies - \$7.95

OUR LADY OF SWAN VALLEY CHRISTMAS MASSES

CHRISTMAS EVE	7:00 P.M.
CHRISTMAS EVE (at The Sycamore Tree)	11:00 P.M.
CHRISTMAS DAY	10:30 A.M.

1 mile east of Hwy 83 on Beck Road Mileposts 47-48. Ph. 754-2429

Season's Greetings from BLACKFOOT Telephone Cooperative, Inc.

Your Caller knows WHO he's talking to, why shouldn't you? Blackfoot's Caller ID service shows you the name and number of WHO is calling!

For \$6.00 per month, Caller ID takes away the surprise of answering a ringing phone. When you know WHO is calling, you can decide whether to answer your phone or not.

Now, through December 31, 2003 you can get a FREE Blackfoot Caller ID Box* and a month of FREE Caller ID when you sign up for a year of service.

Call 1-800-649-4108 to sign up today!

1221 North Russell, Missoula, MT 59808; 1-800-649-4108, www.blackfoot.net

Hungry Bear

Steak Seafood Pizza

Open 7 Days a Week

Breakfast 8 a.m.
 Lunch 11:30 a.m. • Dinner 5:00 p.m.
 Bar Opens at 4:00 p.m.

Steak House

Swan Valley, MT • Hwy 83 MM 38-39 • 754-2240

Please Pause For Pets and Paws

\$1000 reward for the return of Jessie Belle, a 3 month old Jack Russell female puppy, stolen from a 1999 white ford pickup in Seeley Lake at Rovero's on December 10 between 10:00 and 11:30 a.m. Jessie is so loved and needed by her master, Kelsey Brewer, who has undergone five brain surgeries since being injured two years ago. Jessie Belle was Kelsey's inspiration to continue to learn how to walk and talk again. Please, if you have seen Jessie Belle or know her whereabouts, pass this message on to the person who has her. There will be no questions asked! Call the Brewers at 406-244-5797 or 406-544-4793, or Elinor Williamson at 677-2174 any time of the day or night. We can meet you anyplace at any time. Have a friend call. We do not care who you are. We only want Jessie Belle back! Please open your heart and help Kelsey's heartache. With the money you can buy the dog of your choice! You may also take Jessie Belle to anyone and have them call us. Once we see it is the right puppy, we will leave the money, or you can write us and tell me to pick Jessie Belle up and I will leave the money. The Brewers do not want the money back, nor to have you arrested for stealing. Only you can correct the terrible wrong and go on to have a good Christmas by doing the right thing, which is returning a heartsick little puppy to its heartsick loving family. Call me. I will help you! I will not trick you! We mean you no harm. Please don't harm the puppy!

Paws Up

to the Dome family of Swan Lake. Thank you for your kind donation. We always need kind words! We received the following letter from Carol Dome: "We wanted to send you this small donation as a thank you for just being there and offering all your services. When puppies and dogs get lost out here, this is such a vast area, it can take days or longer or even never for the pets to get back home. It was comforting to know if anyone found him, they could give him to you & you'd take care of him till you found the owner."

We were one of the lucky ones, as our puppy miraculously showed up the next morning dry & OK. He was shaken up, but unharmed.

Thanks for your big hearts, your service & the peace of mind you give to pet owners."

Blessing to R., who is truly a doggie/kitty angel. We thank you!

Paws Up

to Tracy Scott, who picked up two Labs on Highway 200 and brought them to Paws Up Safe Home. The owners from Potomac were very happy their dogs were safe and very happy to pay the pickup fee. Had they been picked up by Animal Control, the pickup fee would have been \$200 or more, plus by the time Animal Control would have had time to go and pick the dogs up off the highway, one or both could have been killed.

Once again, Tracy reports she saw a large black dog chase deer out on the lake and fall through the ice. Tracy was too far away to reach the dog or see if the dog got out. As you may remember, Tracy saved a small dog from the ice last year after it had fallen in on the river ice.

PLEASE PEOPLE, DO NOT ALLOW YOUR DOGS TO CHASE DEER OR RUN AT LARGE. YOUR DOG SUFFERS TERRIBLE FATES FROM RUNNING AT LARGE! LOVE YOUR PET. KEEP IT CLOSE AND BE A RESPONSIBLE PET OWNER! CHILDREN LEARN FROM YOU. BE A GOOD AND LOVING TEACHER!

Paws Up

to Arield Wasem, for fixing the back light at Paws Up. We once again have a light out back and as usual, Arield charges us nothing, but Santa knows about your good deeds Arield!

Paws Up

and many thanks to Jerry and Elke Scholl for your support.

Paws Up

to the people who brought us dog food and doggie treats. Allen I am sorry, Renee didn't catch your last name. Call me and let me know so I can thank you properly. Blessings to you and yours, and many thanks for your kindness.

Paws Up

to Jay W., who called about a little dog running along the highway on a red leash which appeared to have been chewed. Jay, I had no idea where you had seen the dog, so could not go look. Please, if you see a small dog running on the highway which looks lost, try to bring the dog to Paws Up Safe Home. Do not leave it on the road to be killed. Please, if the dog appears mean, do not endanger yourself.

ONCE AGAIN!

IF YOU SEE AN ANIMAL BEING ABUSED, CALL ANIMAL CONTROL. DO NOT CALL PAWS UP SAFE HOME. WE CANNOT AND WILL NOT GO ONTO SOMEONE'S PROPERTY AND TAKE DOG OR CAT. WE CAN ONLY TAKE DOGS WHICH ARE BROUGHT TO US. AS A CITIZEN, IF YOU SEE ABUSE IT IS YOUR RESPONSIBILITY TO REPORT SUCH ABUSE. ABUSE CANNOT BE CONDONED.

ARTIST PROOFS

were sent out on December 13. We are still looking for Mary Rose Amendola, who ordered two and left no phone or address. Also Sheila Townsend. I have tried to call all of the people locally. Please call Cindy at 677-0244 to pick up your artist proofs. We have prints on sale at the Bison and Bear Mercantile, and you may order your artist proof from them also. Please see Cindy for your framing. ONCE AGAIN, WE THANK ALL OF YOU SO MUCH FOR YOUR SUPPORT. THE PICTURE IS TRULY A TREASURE. IN ORDER TO SUPPORT PAWS UP, WE MUST CONTINUE TO SELL THE ARTIST PROOFS AND PRINTS. IT'S BEEN A LOT OF WORK AND TIME, BUT WILL BE SO WORTH IT HOPEFULLY. I CANNOT EXPRESS MY THANKS ENOUGH TO CINDY AND MELODY FOR THEIR DEDICATION AND PUTTING UP WITH ME! We have so much to be thankful for. Bless all of you who help so much!

Minimum fee for dogs recovered at Paws Up Safe Home - \$35.00

Elinor Williamson, 406 677-2174 PO Box 522 Seeley Lake, MT 59868

Paws Up Safe Home Renee Stowe 406 677-3435 PO Box 323 Seeley Lake, MT 59868

Max-profit #368168 Federal ID number 11016 • www.pawsupsafehome.org

Eagles build record to 11 wins, one loss

The Seeley Lake Eagles "A" squad racked up three more victories this past week to run their record to 11-1. The last victory brought home the first place trophy at the Deer Lodge Elks Basketball Tourney.

The boys started out with another scrimmage game against the Blackhaws freshman team. The Blackhaws played well and the Eagles were down by a score of 18-13 at the half. The third quarter was a different story, as the Eagles came out and took control, with a 37-4 quarter. The Eagles won 48-28.

At the Deer Lodge Tourney on Saturday, the Eagles faced off against Anaconda. Seeley jumped out to a 12-2 early lead and cruised to a 50-30 win. Evans, Balcom and Nelson combined for 40 points and 18 rebounds. This set up the championship game against Deer Lodge. This was a tough physical contest. Seeley jumped out 9-2 and led the whole game on its way to a 46-40 championship game win. Nelson, Evans and Balcom all scored in double figures again, combining for 42 points and 19 rebounds. The "B" squad also did well, bringing home a second place trophy. They split a pair of games, beating Anaconda 23-19, and losing to Deer Lodge 33-17. Good job boys!

	1	2	3	4	Final
Eagles	8	5	27	8	48
Blackhaws	9	9	4	6	28
Ryan Nelson	-	-	-	-	13 pts, 6 rebs, 4 assists, 5 steals
Zach Balcom	-	-	-	-	10 pts, 4 rebs, 2 assists, 4 steals
Eric Ferdinand	-	-	-	-	9 pts, 2 rebs, 2 assists, 3 steals
Zach Evans	-	-	-	-	8 pts, 6 rebs, 2 assists, 1 steal
Steve Bergeson	-	-	-	-	2 pts, 3 rebs, 1 steal
Ryan Richards	-	-	-	-	2 pts, 2 rebs, 1 assist, 1 steal
Leland Bartlett	-	-	-	-	2 pts, 1 reb, 2 assists, 1 steal
Tom Crowell	-	-	-	-	2 pts, 2 rebs
Matt Pitman	-	-	-	-	2 rebs
Chance Twedt	-	-	-	-	2 rebs
Jesse Swigert	-	-	-	-	1 steal
Blackhaws Freshmen					
S. Johnson	-	-	-	-	8 pts.
C. Cahoon	-	-	-	-	6 pts.
J. Landsberger	-	-	-	-	6 pts.
S. Pitman	-	-	-	-	2 pts.
J. Kessler	-	-	-	-	4 pts.
R. Parcell	-	-	-	-	2 pts.

Seeley 31 19 50

Anaconda 11 19 30

Zach Evans - 15 pts, 6 rebs, 1 assist,



Eagle "A" Tournament Team, first place: Front row: Tom Crowell, Eric Ferdinand, Leland Bartlett. Back row: Zach Balcom, Steve Maciag, Ryan Nelson, Zach Evans, Steven Bergeson, Matt Pitman.



Eagle "B" Tournament Team, second place: Front row: Shawn Evans, Ryan Richards, Todd Skelton, Levi Cahoon. Back row: Chance Twedt, Ty Heaton, Aaron Morse.

1 steal	Deer Lodge	16	24	40
Ryan Nelson - 13 pts, 5 rebs, 4 assists, 4 steals	Ryan Nelson,	1	pts, 4	rebs, 3
Zach Balcom - 12 pts, 7 rebs, 3 assists, 3 steals	Zach Evans -	15	pts, 11	rebs, 3
Eric Ferdinand - 3 pts, 1 reb, 2 assists, 2 steals	Zach Balcom -	1	pts, 4	rebs, 2
Tom Crowell - 5 pts, 5 rebs, 1 steal	Eric Ferdinand -	2	pts, 2	rebs, 1
Matt Pitman - 2 rebs	Steve Maciag -	2	pts, 3	rebs, 1
Steve Maciag - 1 reb, 1 assist	Leland Bartlett -	1	reb, 1	assist, 1
Leland Bartlett - 1 assist, 1 steal	Seeley	26	20	46

(Stories by coach Jim Nelson)

PUBLIC NOTICE

The Montana Department of Environmental Quality (DEQ) is extending the public comment period on its intent to list the Pyramid Mountain Lumber Facility in Seeley Lake, Montana on the Comprehensive Environmental Cleanup and Responsibility Act (CECRA) priority list. The Pyramid Mountain Lumber Facility is located in Township 16 North, Range 15 West, Section 3 of Missoula County, Montana. The public comment period began on December 10, 2003 and will end on January 22, 2004 at 5:00 p.m. Copies of facility-related documents are available at the DEQ Site Response Section of the Hazardous Waste Site Cleanup Bureau office located at 1100 North Last Chance Gulch in Helena. DEQ will hold a public meeting upon written request to DEQ on or before January 22, 2004, by 10 or more persons, a group composed of 10 or more persons, or by a local governing body. Please submit written comments to Moriah Bucy at the DEQ Remediation Division, P.O. Box 200901, Helena, MT 59620-0901 or via email to mbucy@state.mt.us <mailto:mbucy@state.mt.us>. For more information, call 406-841-5064.

Rem0403256

It's a No Brainer-Dump Cable!

MISSOULA LOCAL TV CHANNELS ARE HERE!! NO OFF-AIR ANTENNA NEEDED (Locals-\$5.99 per month)

Channels may vary. Certain local channels may require an additional dish antenna, installed by DISH network free of any charges.

- **FREE-HBO***
- **FREE-CINEMAX***
- **FREE-3Mos. America's Top 100** (Regular Monthly Price-\$49.99)
- **FREE-Satellite TV System**
- **FREE-Up to 3 Receivers**
- **FREE-Standard Professional Installation**

America's Top 100

including: CNN, History, ESPN, Lifetime, AMC, Weather, TLC, TNT, MSNBC, Disney, Cartoon Network, Comedy, MTV, Nickelodeon, Sci-Fi, TBS Superstation, Animal Planet, HGTV, WE, Fox News, Speed Channel and many more.

HBO

8 Channels

Cinemax

5 Channels

Pay just \$49.99 and receive a \$49.99 credit on your first bill, making the Satellite System FREE! Three Months FREE offer is valid on America's Top 100 Value Pak (\$49.99/mo. value) or higher and requires participation in Free Dish offer. A \$49.99 programming credit will be applied to the 2nd, 3rd, and 4th month of service. Valid major credit card and SSN required. Participation is subject to credit approval. Requires a minimum purchase of America's Top 50 or DISH Latino for 12 or 24 consecutive months.

EAGLE Satellite

Installing FREE from Darby to Whitefish to Deer Lodge to Libby. Serving Montana for over 23 years.

2347 South Ave. W., Missoula
(406) 721-3662 or (888) 565-6064



Offer ends 1/31/04 and is available in the continental United States. Must be a new, first-time DISH Network residential customer. All prices, packages and programming subject to change without notice. Local and state sales taxes may apply. All DISH Network programming, and any other services that are provided, are subject to the terms and conditions of the promotional agreement and Residential Customer Agreement, available at www.dishnetwork.com or upon request. Hardware and programming sold separately. Additional receivers must be activated in conjunction with a primary receiver. Local Channels packages by satellite are only available to customers who reside in the specified local Designated Market Area (DMA). Certain local channels may require an additional dish antenna from DISH Network, installed free of any charges. SuperDISH antenna may be required to receive local channels and will be included at no additional charge with subscription to local channels for 12 consecutive months. If service is downgraded, a cancellation fee equal to the monthly charge of local programming times the number of months remaining will apply. Significant restrictions apply to DISH Network hardware and programming availability, and for all offers. Social Security Numbers are used to obtain credit scores and will not be released to third parties except for verification and collections purposes only. See your DISH Network Retailer, DISH Network product literature or the DISH Network website at www.dishnetwork.com for complete details and restrictions. All service marks and trademarks belong to their respective owners.

An Eagle has landed!

Local Boy Scout, Michael Biggins last month sat before the Mullan Trail Districts Eagle Board for his Eagle Board of review. They recommended him for advancement to the rank of Eagle Scout.

In a search of Eagle Scout records by the Montana Council of the Boy Scouts of America, Michael appears to be the first Eagle Scout to come from Seeley Lake.

The rank of Eagle Scout is the highest rank that can be earned in the Boy Scouts of America. It requires considerable perseverance to get there. Once achieved, the Scout is recognized by his peers, his community, and his nation, as having achieved something very significant — something few attain in their lives.

The Eagle Scout Award represents many years of dedicated effort. It is a firm demonstration of how people, working together through the years, can truly help mold a young man with a solid sense of leadership, citizenship, and responsibility.

Michael has been a member of Seeley Lake's Troop 1919 for the last four years. He currently is the troop's Senior Patrol Leader. During his time in the troop Michael has achieved much. For three years he has been the number two salesman in the troop in terms of volume of popcorn sold. This year he is the number one salesman.

In 2002 at a Melita Island camp he received the silver medal in a knot tying contest. He received the 100 Frost Point Award for the years 2001, 2002, 2003. In 2002 Michael attended the BSA Junior Leadership Course called Takachsin. While there he was elected Patrol Leader by his fellow patrol members. In 2003 he went back to Takachsin as a staff member.

In addition to his training in the Junior Leadership course Takachsin, Michael has been trained in BSA Snorkeling.

In the spring of 2003 he was elected into the Order of the Arrow by the members of his troop. In June of 2003 he became an Ordeal member in the OA. He is currently being considered for the BSA Meritorious Award for saving a boy's life during a camp, by his use of the Heimlich maneuver on the boy while he was choking at dinner. During Michael's time as a boy scout he has camped out over 70 nights, hiked 140 miles, and contributed 59 hours in service projects. Twenty-one merit badges are required for the rank of Eagle Scout, Michael has earned 24 so far.

During Michael's time as a Boy Scout he had to complete an Eagle Project.

An Eagle Scout Project Completed

The Seeley Lake Elementary School now has a lighted outdoor basketball court with fresh paint applied to the backboard poles, backboards, rims, boundaries, and keys. All thanks to Michael Biggins for completing his Eagle Scout Project.

The project has taken Michael almost a year from a concept to actually flipping the switch for the lights to come on.

The requirements for a Boy Scout Eagle Project are: 1. While a Life Scout, plan, develop, and give leadership to others in a service project helpful to a religious institution, school, or to his community. 2. The project idea must be approved by the organization benefiting from the effort, the unit leader, unit committee, and the district Eagle advancement committee. 3. Before beginning a project the boy must answer the following questions: a) Who will benefit from the project? b) How will they benefit? c) What official from the group benefiting from the project will be contacted for guidance in planning the project? d) And, how many people will be recruited to help

carry out the project? If money is needed for expenses related to his project the boy must secure the necessary funding. After the project is completed the boy must go back to the Eagle advancement committee for them to approve the manner in which the boy carried out the project. He must give a report to the committee explaining how he demonstrated leadership of others, and how he directed the project rather than do the work himself. How the institution benefited from the project. If the project followed the plan, if changes to the plan were made explain why the changes were necessary.

Back in December of last year Michael's idea came together. He received approval from his Scoutmaster. In January he presented the idea to the School board and received their approval. In February he got the local unit committee's approval. Finally he presented the project to the district Eagle advancement committee in April and received their approval.

Once all the approvals were obtained Michael could now go out and raise the necessary funding. He presented his project to Gary Miller at the First Valley Bank, and the Lyons Club board of directors. Both the bank and Lyons Club were gracious and agreed to donations for Michael's project. Additional funding was obtained when Michael wrote and received a grant from the Missoula County Park Board.

Aside from the necessary funding Michael asked for and received many donations for materials and time. He contacted Mr. Ray Cebulski for help in securing telephone poles and the use of equipment to put the pole in the ground and attached the lights to the pole from Missoula Electric Cooperative. Dick Lewis of Rent All helped out by donating scaffolding to the project.

The late Larry Marx and his son Kyle of Rover's donated all the paint and painting supplies for the project. Gary Burkey donated his time and backhoe work. Bart Peterson donated his time and the operation of MEC equipment. Bill Yiengst of Seeley Electric donated his time and expertise toward the project.

Finally, the first day of actual work on the project began in June. The basketball poles and backboards were heavily rusted. Michael directed his volunteer crew to sand, scrape, and prime the backboards. The metal poles, backboards, shooting squares and rims were painted. The court had to be swept clean in preparation for painting the court boundaries and keys. This work ended



Michael Biggins awarded the Eagle Scout Award, scouting's highest award.

in early July.

The next phase of the project took place in October and November. Michael coordinated with the professionals Bart Peterson from MEC, Bill Yiengst of Seeley Electric, and Gary Berkey to put the telephone pole in the ground, attach the lights, bury and attach conduit, wire the lights, photo cell, timer, and provide electrical service.

Michael's volunteer and professional crew consisted of 10 people. Together, over 90 hours of work went into his project. The Basketball Court is to be lighted from May 15th through October 15th each year, during the hours of 7:00 PM until 10:00 PM.

Michael would like to thank the volunteers not mentioned so far. Fellow Scouts Jon Bruton, and Beau Maciag,

his sister Katie, his mom and dad Liz and Michael Biggins, friends Sarah Drew, and Ben Shea. He also would like to express his gratitude to those listed in this article who contributed money, materials, or professional help toward his Eagle Scout Project.

Once this project was completed Michael appeared before the district Eagle advancement committee in Missoula. They approved the manner in which he completed his project and recommended advancement to the rank of Eagle Scout.

With all of this behind him, Michael Biggins will come full circle in early 2004 at his Eagle Scout Court of Honor. The first local scout to receive the honor and hopefully not the last.



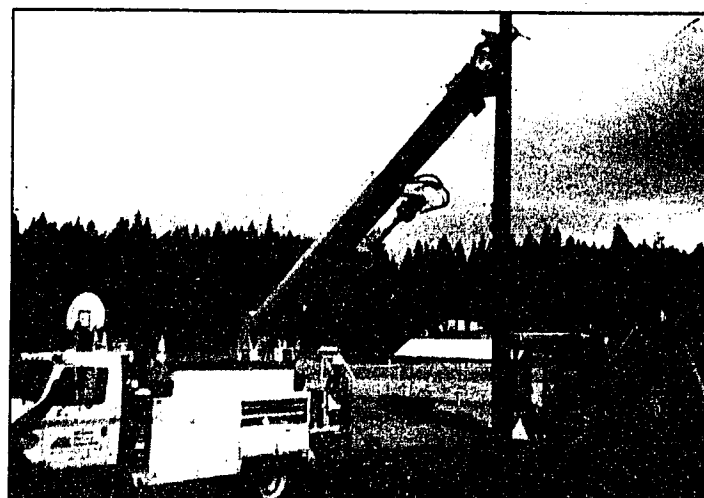
Jon Bruton finishes painting a backboard.



Mike Biggins, Gary Barkey, and Bill Yiengst putting conduit in the ground.



Mike Biggins helping Bart Peterson set the poles.



Bart Peterson placing poles in the ground.

Chicken Coop & Lounge

Closed Christmas

Sorry, We don't cook turkey

Open for Breakfast

7 AM 7 days a week

Merry Christmas

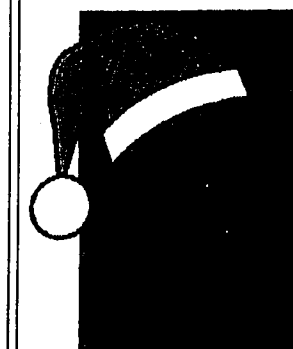
Gene Kelly & Staff



Paws Up Safe Home

wishes all of you a very

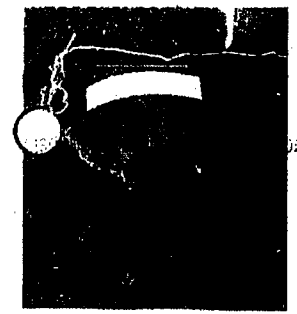
Merry Christmas.



Molly #263
7 months



Sadie #258
6 years



WINSTON #269
2 years

These wonderful dogs are available for adoption. Stop by and meet them if you are considering a new family pet.

Call 677-3435

The Christmas Story

by Clay Sterling

Many articles and papers have been written at this time over the years about the true meaning of Christmas. Yet I have never ready any article of any kind that explains what Christmas really is. It may be surprising to know that the celebration of Christmas dates back hundreds of years before Christ, as naturally it would, because it is not celebrating Christ's birth, but is in fact a celebration of the "winter solstice." If you know anything about the occult and astrology, the winter solstice is an important time wherein the sun is worshipped. The sun "god" dies on the 22nd and is resurrected or reborn on the 25th of December, hence the end of the short days and the beginning of the longer days. One of the many names for the sun "god" is Baal, and it was through Baal worship that Israel provoked God to anger and was sold into slavery. It was because of this, the worship of other gods, that the Israelites suffered so much judgment by the hand of God. Burning incense to Baal was and is a forbidden abomination according to the Bible, but here we are still doing it today, and calling it Christmas. This is why most Christmas decoration lights are in the shape of a flame; burning incense to Baal, the sun god of the winter solstice, whose true identity is Satan.

"Observing the times," whether it be the winter or summer solstice, equinox, new moons, etc. is strictly forbidden by God. Deuteronomy chapter 18 tells it plainly. "There shall not be found among you any one...that useth divination, or an observer of times, or an enchanter, or a witch. Or a charmer, or a consulter with familiar spirits, or a wizard, or a necromancer. For all that do these things are an abomination unto the Lord..." Yet our nation is full of these things. It totally bewilders me that this country fully expects God's blessing.

"Observing the times" was also the sin of the Galatians. They started out right and then the apostle Paul had to rebuke them in chapter four. "But now, after ye have known God, or rather are known of God, how turn ye again to the weak and beggarly elements, where unto ye desire again to be in bondage? Ye observe days, and months, and times, and years." Paul further admonished the Galatians in the next chapter. "Ye did run well; who did hinder you that ye should not obey the truth? This persuasion cometh not of him that calleth you." (ch 5:7 & 8)

Underneath the fun times, warm family feelings, get-togethers, and good food, Christmas is just plain old Baal worship and observing the times.

Most of the world observed the times and worshipped Baal at this time of the year except bible-believing Christians. Howbeit, the devil wants all the world to worship him so he knew he would have to make these abominations look Christian. That's where the birth of Christ, the nativity scenes, gift giving and all these things come into the picture. Now Christians think they have a biblical excuse to "observe the times." In his book, *The Winter Solstice and the Sacred Traditions of Christmas*, occultist John Matthews writes, "It is, indeed, from this festival that we receive the idea of giving gifts at Christmas and not from the gifts of the Magi as commonly supposed."

It doesn't matter what emotions and feelings say. It only matters what the bible says. The truth of the matter is there's nothing holy about the holidays and there is nothing merry about Christmas. Peace and joy are not found in pagan rituals. They're only found in submitting your heart to the King of all kings, confessing your sins before him and obeying all that he commands you to do. Satan has masterfully seduced the hearts of all of mankind, but he can only snare a heart that's hard.

The Christ in Christmas is not the Christ of the bible. It is another Christ. The bible talks about this also. "And Jesus answered and said unto them, take heed that no man deceive you. For many shall come in my name, saying, I am Christ; and shall deceive many." (Matthew 24:4,5)



VFW Post Presents Voice of Democracy Awards

VFW Post 7992 recently presented the Voice of Democracy awards to this year's winners. Shown from left to right are Toni Sexton, the adult advisor, second place winner Tatum Hoehn, first place winner Samantha Dome, Joe Nagy, the Senior Vice Commander of Post 7992, and Don Skillcom, Quartermaster of the Post. Back row is Dick Fogg, VOD Chairman.

The Voice of Democracy Program is designed to allow students to voice their opinions on their responsibility to our nation. This year's theme was "My commitment to America's future."



7th Annual

Community Appreciation Day

Sunday December 21, 2003

Noon to 4 P.M.

Seeley Lake and Ovando area residents are invited to the **Rich Ranch in Woodworth Meadows** on Sunday, December 21st, from Noon to 4 P.M. for a community family fun day. Gather with friends and neighbors to share in the holiday spirit.

Complimentary activities include:

Horse Drawn Sleigh Rides, Snowmobile Rides, Outdoor Chili Feed & Campfire. There's also room for sledding, cross-country skiing, and snowshoeing.

Santa will be at the Rich Ranch at 3 P.M. to deliver his annual community treats to the children

Sponsored by the Rich Family, Lions Club, 4H Club, and Seeley Lake Area Chamber of Commerce.

For more information call the Rich Ranch at 677-2317.



Spiritual Lockjaw -- A Christian Phenomenon

Passages

by William R. Campbell
Assoc. Pastor
Mission Bible Fellowship

I've often wondered why it is people who would never, in a million years, stand by and watch a complete stranger drown, or suffer some similar loss of life without attempting to save them, are nonetheless completely willing to let close friends and even relatives lose their very souls without so much as a word. It seems that we develop a bad case of what I call "spiritual lockjaw."

Some years ago in Chicago, I taught a course on evangelism. When I asked people for names, words or phrases they associated with evangelism, I expected things like Bill Graham, outreach, saving the lost. To be sure, these things were on the list. However, they were there along with things like pushy, overbearing, obnoxious, and uncomfortable.

Unfortunately, our nature seems too often to tend to the extremes. We either suffer from the aforementioned "spiritual lockjaw," or we tend to the overzealous, pushy approach.

On a recent trip to New York, my brother-in-law asked me why it is that Christians always feel they are right and everyone else is wrong. My answer was simply that I believe the Bible is the true and revealed word of God. I believe that the life, death and resurrection of Christ as portrayed in the Bible and born out by witnesses, establishes that Christ was in fact, whom he said he was. History supports this belief. I did not have to check

my brain at the door to discover the truth of the fact. In point of fact, there is more written about Christ than about any other person, living or dead. (The book by Josh McDowell, "Evidence that demands a verdict" is a great source of extra biblical evidence regarding the life of Christ, as well as a source for other readings.) If the event of His resurrection from the dead is true, then it is not a giant leap of faith to believe that He was who He said He was - The Son of Man. This being the case, I believe that His words are true, as well as all of Holy Scripture, which He quoted often during His lifetime.

Next, my brother-in-law said that he could understand my belief, but weren't we, as Christians, compelled to evangelize to other people to make them believe as we do. A good question! And, as with all such questions, I returned to scripture for the answer. The apostle Paul pointed out to the Corinthians, "...the Lord has appointed to each his task. 'I planted the seed, Apollos watered it, but God made it grow. So neither he who plants nor he who waters is anything, but only God, who makes things grow.'" It is because we love people that we share what we believe to be true. Romans 10:9, 10 says, "That if you confess with your mouth, 'Jesus is Lord,' and believe in your heart that God raised him from the dead, you will be saved. For it is with your heart that you believe and are justified, and it is with your mouth that you confess and are saved." You see, we are not called to "make" believ-

ers - only to share the Gospel (good news) of Jesus Christ.

But, and herein lies the rub, all too often Christians, when attempting to share their beliefs with those they know or love, make one of two mistakes: (1) They are too zealous, "pushy," "overbearing," or "obnoxious" (a result of trying to "sell" what we believe). This ignores the above scripture as well as the one in Matthew which states "God alone does the growing;" or, (2) They confuse the simple salvation message with doctrinal beliefs. This leads to confusion by the hearer, and often does more to act as a 'stumbling block' to belief than it does to bringing any true understanding. Both of these errors are often brought on by an attempt by us to act as the Holy Spirit - a task which we are not equipped for.

That said, let me add a story by D.L. Moody, the famous evangelist. One evening, after a crusade meeting, Moody was confronted by an irate man who challenged his methods in bringing the Gospel to non-Christians. Moody calmly asked him, "Tell me, what method do you use in doing evangelism?" "I don't do evangelism," responded the man. To which Moody replied, "Well, I think I like the way I do it better than the way you don't."

Spiritual lockjaw often results from a fear of rejection, but we misunderstand. People are not rejecting us. It is Christ they reject. This is why I feel it is so important to realize our Christian calling. Simply stated, it is this: Speak the truth in love, and leave the growing to God. And always remember the saying: "A man convinced against his will, is of the same opinion still."

If we care enough to try to save a life, should we not care even more about saving a soul for eternity?

Condon Area Senior Lunch

The Hungry Bear Steak House is serving lunch to Condon area seniors (60 and older) on Mondays and Thursdays at 1:00 p.m. Please call the Hungry Bear at 754-2240 for reservations prior to 5:00 p.m. the day before. This program is sponsored by Swan Valley Senior Services.

Thursday, Dec. 18
DECEMBER BIRTHDAY and CHRISTMAS CELEBRATION! Cranberry Juice, Turkey and Dressing, Cranberries, Green Beans, Cake
Monday, Dec. 22
Grapefruit Juice, Stroganoff, Peas, Roll, Coleslaw, Pudding
Thursday, December 25
Closed for Christmas

Double Arrow Landowners

Why Haul, When We Haul?

Larson Disposal now serves all the Double Arrow Ranch with **Year-Round Garbage Service.**

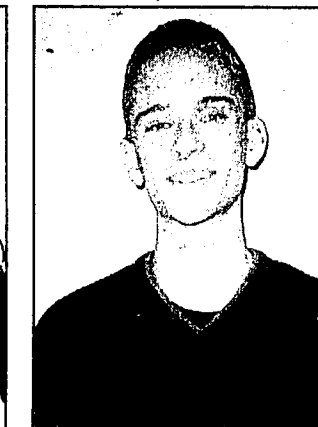
Carts will be furnished with the service. Weekly or bi-weekly schedules available.

CALL FOR RATES & SCHEDULES
677-2252

SSHS Students of the Week



Lindsey Richards is bright, energetic and caring. She brings character and fulfillment to the classroom environment with her laughter and dedication. She shows appreciation for her education and is a joy to be around.



Carl (Andrew) Meissner is an insightful dedicated young man with a wonderful personality. He is always polite and thoughtful to others. Carl is the type of person that will pursue his goals and appreciate the struggles of the journey down the road of success.

Students of the Week submitted by staff at SSHS

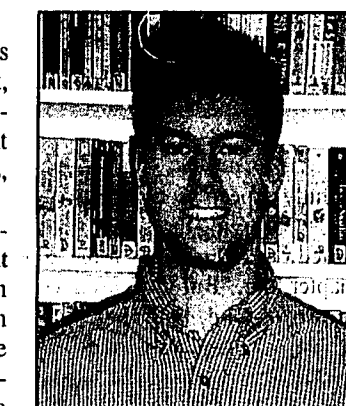
New teacher at Seely-Swan High

By Donna Love

Seeley-Swan High School has a new teacher, Matthew Arndt, hired last fall to teach Title I, a program designed to help students that are struggling with core subjects, such as math and language.

Originally from Chicago, Illinois, Arndt earned his degree at Iowa State University. While in school he worked with children in drug and runaway programs. He found working with teens rewarding so he decided to become a teacher. Following graduation he taught high school math in Chicago for three years.

When he and his wife, Suzy, married they decided they didn't want to raise a family in Chicago. They had traveled through Montana on various occasions and thought it would be nice place to live so they sought work here. His wife is a special education teacher



at Meadow Hill in Missoula, and during their first year here Arndt substitute taught in the Missoula area.

Arndt has enjoyed working with the students at SSHS. He feels that curiosity is the key to being a life long learner, and said, "I try to instill in my students a sense of wonder."

"The Big Jewelry Guy"

from the Christmas Bazaar is continuing the sale at the Lazy Pine Place. Full assortment of necklaces, earrings, bracelets & holiday items. Prices too good to miss - wholesale and below!

Through Christmas Eve

SLE Primary Christmas Concert

The Seeley Lake Elementary Primary will perform A PLACE IN THE CHRISTMAS CHOIR Thursday December 18, 2003. Kindergarten, 1st, 2nd, and 3rd grades will present two concerts, the first at 1:30PM and the evening concert will begin at 7:00PM. Both concerts will be held in the SLE multi-purpose room.

The musical is about a famous choir from the North Pole directed by Santa Claus, of course. There is just one little problem, someone allowed a hound dog into the choir and.....Come and see what happens to the choir and Happy the Hound dog.

PUBLIC NOTICE

The Montana Department of Fish, Wildlife and Parks (FWP) proposes to purchase, and the Montana Department of Natural Resources and Conservation (DNRC) proposes to sell, a conservation easement on certain DNRC lands within the Blackfoot Clearwater Wildlife Management Area (BCWMA). FWP's purpose for purchasing the easement is to prevent the possibility of future residential or other development within the BCWMA. DNRC's purpose is to realize income for the school trust by obtaining compensation for setting aside its development rights on the BCWMA, and by continuing forest management activities on these lands.

A Draft Environmental Assessment (EA) will be available for review and comment beginning Monday, December 15, 2003. You may obtain a copy electronically at the FWP website (<http://www.fwp.state.mt.us>), or by contacting either of the following persons:

Robert Storer
DNRC
1401 27th Avenue
Missoula, MT 59804-3199
406.542.4264 (phone)
rstorer@state.mt.us (e-mail)

Mike Thompson
FWP
3201 Spurgin Road
Missoula, MT 59804
406.542.5500 (phone)
mthompson@state.mt.us (e-mail)

Comments must be received or postmarked no later than January 14, 2004. A public meeting to discuss the proposal will be held at the Seeley Lake Community Center on January 6, 2004, at 7:00 P.M.

Library News

During the holiday break, the Seeley Lake Library will be open Saturdays from 10:00 a.m. to 3:00 p.m., and Wednesday, December 24 and Wednesday, December 31 from 3:00 to 6:00p.m. The Seeley Lake Library is located at Seeley-Swan High School.

2nd Annual Homestyle Christmas Program in Swan Valley

The Second Annual Homestyle Christmas program will be held on Wednesday, December 17, 2003 at 6:30 p.m. at the Swan Valley Community Hall. Refreshments will follow the program. If anyone is interested in participating in the program by sharing a sacred musical selection, please call Marcia Boothby at 754-0094 for more information.

BUSINESS DIRECTORY

<p>Building Contractor</p> <p>Seeley Lake Enterprises</p> <ul style="list-style-type: none"> Licensed Electrical Contractor New homes, remodel, and repair 24 hour emergency service Consulting and planning General contracting with 15 yrs. experience in all phases <p>Home: (406) 677-3159 Cell: (406) 210-1338</p> <p>Chris Neibauer—Owner</p>	<p>Landscaping</p> <p>Mission Creek Land Services</p> <p>Stump Grinding • Brush Chipping • Thinning Tree Planting • Tree Trimming • Trail Building Fire Line Construction • Burning, Pump Truck Fire Hazard Reduction • Landscaping Fence Building • Post & Rail, Privacy Barbless Wire • Corals • Sidewalks, Patios Stone & Concrete Work • Exotic Walkbridges Custom Iron Work General Construction</p> <p>Terry 677-2871 • Tripp 677-0081 • Ward 677-8566</p>	<p>Plumbing, Heating Service</p> <p>HERITAGE PLUMBING & HEATING L.L.C.</p> <p>COMMERCIAL & RESIDENTIAL HOT WATER HEATING</p> <p>(406) 677-3838 • P.O. Box 1356 KEN SCHMITZ SEELEY LAKE, MT. 59868</p> <p>Ken Schmitz 677-3838 Seeley Lake, MT 59868</p>	<p>Contractor • Builder</p> <p>LAKE COUNTRY BUILDERS INC.</p> <p>Custom • Residential • Commercial</p> <p>Mark Williams Tim Tanberg 677 3448 677 2841</p>
<p>Pharmacy • Floral • Gifts</p> <p>Seeley Lake PHARMACY & FLORAL</p> <p>Bob Stejskal RPh P.O. Box 575 • SEELEY LAKE, MT 59868 Phone 677-2424 FAX 406-677-3333 CARDS • GIFTS • FLOWERS • PRESCRIPTIONS • FILM DRUGS • TOYS • COSMETICS</p>	<p>Complete Electrical Service</p> <p>Creekside Electric Inc.</p> <p>Complete Residential & Commercial Wiring Services</p> <p>P.O. Box 287 • Seeley Lake, MT 59868 Phone & Fax: 406 677-0050 Toll Free: 1-866-531-1091 Cell Phone: 406 210-1759 Email: Creekelectric@yahoo.com</p>	<p>Woodworking / Wood Floors</p> <p>Marty's Woodworking 360-7866</p> <ul style="list-style-type: none"> My Specialty Wood Floors Installed, Sanded, Refinished and Repaired Trim, Finish, Rough Carpentry, Decks & Docks Come visit My Showroom in the Heritage Bldg. 25 years experience Contractors Reg # 12135 	<p>Veterinarian Services</p> <p>Swan Valley Equine Service</p> <p>Leslie L. Stroppe, DVM 24-hour Mobile Veterinary Care Reproductive Ultrasound, Lameness, Dental X-ray.</p> <p>406 677-4130 406 837-1168</p>
<p>Newspaper / Advertising</p> <p>Seeley Swan PATHFINDER</p> <p>P.O. Box 702 Seeley Lake, MT 59868 406 677-2022</p>	<p>Tools & Equipment Rentals</p> <p>Rent-All</p> <p>Tools & Equipment for Homeowners & Contractors Monday thru Friday 8 a.m. - 5 p.m.</p> <p>677-2200 165 Redwood Lane Behind Timberline Building Materials</p>	<p>Pet Grooming / Boarding</p> <p>Mountain View Boarding & Grooming</p> <p>Ella Goodbread Call 677-2572 for Appointment</p>	<p>Hair Styling</p> <p>Darcy's Hair Designs Hair Styles for Everyone</p> <p>PO Box 634 • Seeley Lake, MT 59868 (406) 677-2677</p>
<p>Logging Professionals</p> <p>HAMILTON ENTERPRISES</p> <p>Accredited Stewardship Logging Professionals Heavy Equipment Hauling General Logging*Road Building*Forest Stewardship</p> <p>Daniel Hamilton Travis Hamilton (406) 754-2445 (406) 261-8306 Cell (406) 239-1340 Cell (406) 261-8306 Salmon Prairie Rd*Swan Valley*MT*59911</p>	<p>Stonework Construction</p> <p>Clearwater River Stoneworks</p> <p>Jim Nelson, Box 1146, Seeley Lake, MT 59868 (406) 677-0001 Website Address: SeeleyLake.com/stoneworks</p>	<p>Sand / Gravel / Roads / Excavating</p> <p>Sand & Gravel</p> <p>Driveway Rock Clearing & Excavating Roads & Driveways Water Lines & Septic Systems</p> <p>John Richards 677-2600</p>	<p>Veterinary Clinic</p> <p>Mountain View Veterinary Clinic Ed Wolff D.V.M.</p> <p>Practice Limited to Cats & Dogs 8 am to 5:30 pm Mon, Tues & Wed. (Thursday, Friday & Saturday by appointment only) 375 Rumble Creek Rd., Condon Directions: Highway 83, just north of mile marker 40, turn right — 2/10 mile on Rumble Creek Road 754-5444 for appointments</p>
<p>Motel / Lodging</p> <p>LAKE COUNTRY MOTOR LODGE</p> <p>Bob & Kathy Harlock 3300 Hwy 88 N, MM 14.5 PO Box 37 Seeley Lake, MT 59868 (406) 677-9338 (800) 337-9978 Fax (406) 677-8919 lcmotorlodge@blackfoot.net seeleylakemotorlodge.com</p> <p>Clean, Comfortable, Affordable Downtown location with easy trail access</p>	<p>INSURANCE</p> <p>Tom Monaghan Insurance Agent</p> <p>FARMERS 31 Years Serving America Auto • Home • Life • Business 3198 Hwy. 83, PO Box 992 Seeley Lake, MT 59868 Bus: 406-677-3090 Cell: 406-677-4002 Fax: 406-677-3705 tommonaghan@blackfoot.net</p>	<p>Financial Services</p> <p>RAYMOND JAMES FINANCIAL SERVICES, INC. Member NASD/SIPC</p> <p>Gary D. Barnett Registered Principal / Branch Manager 3166 Highway 83 N Seeley Lake, MT 59868 (406) 677-5800 (800)-841-0084</p>	<p>Message Therapist</p> <p>3D MASSAGE Donna's Delicate Digits</p> <p>Donna Hoffman Message Therapist</p> <p>P.O. Box 324 Seeley Lake, MT 59868 Home: (406) 677-3889 Cell: (406) 210-1093 three_d_message_4u@yahoo.com American Massage Therapy Association</p>
<p>Construction / Remodeling</p> <p>Beaver Creek Construction, LLP</p> <p>Dan & Susie Wallace (Owners) 406-362-4403</p> <ul style="list-style-type: none"> Custom Homes • Remodels Roofs • Finish • Garages <p>"Good Prices for Good Work"</p>	<p>Full Service Automotive Service</p> <p>Glen's Automotive Service 677-2141</p> <ul style="list-style-type: none"> Engines • Computer Diagnostic Analyzer AC • Brakes • Ozone Exhaust Transmission • Clutches • Shocks <p>Glen Morin - PO Box 246 - Seeley Lake, MT 59868</p>	<p>Newspaper / Advertising</p> <p>Seeley Swan PATHFINDER</p> <p>P.O. Box 702 Seeley Lake, MT 59868 406 677-2022</p>	<p>Motel / Affordable Cabins</p> <p>Whitetail Guest Cabins</p> <p>Complete Kitchens, 3 Clean & Inviting Rooms HBO / Satellite, Jack & Pann Eskers 3805 Hwy 83 N.</p> <p>Ph 406-677-2024 Fax 406-677-2045 www.whitetailcabins.com</p> <ul style="list-style-type: none"> Nightly Multi-nightly Discounts Monthly Leases Available



Loose Moose Dollar Stop, L.L.C.

Downtown Seeley Lake, Bison & Bear Trading Center
Open Monday - Saturday 10:00 to 5:00
406-677-0065

New Toys Arrive This Week!

Inexpensive Christmas Gifts & Stocking Stuffers

We have.....

- Many Gifts & Gift Wrapping, Xmas Trimming & Accessories
- Jewelry, Toys, Novelties, Perfume, & Stuffed Animals
- Winter Hats, Gloves, Sweaters, Socks, & Slippers
- Foil Cook Pans, Paper Products, & Cleaning Products
- Houseware, Cooking Utensils, Batteries & Flashlights
- Windchimes, Birdhouses, Candles & Photo Albums & Much more!

Register to win T.V. with \$10.00 purchase!

Attend the Church of Your Choice!



Seeley Lake Church Directory

Faith Chapel (Pentecostal Church of God)
Worship—10:30 a.m. Sunday School—9:30 a.m.
Hwy 83 North Phone—677-2220
Pastor—Gary Wayne

Seeley Lake Baptist Church
Worship—11:00 a.m. —Sunday School 9:45 a.m.
—Sunday Evening 6:30 p.m. —Wed. Bible Study & Prayer 6:30 p.m.
3116 Hwy 83 South Phone—677-2268 (Founded 1953)
Pastor—Bill Bogardus

Holy Cross Lutheran Church
Sunday Worship—9:00 a.m.; Sunday School 10:15 a.m.
Mon. 5 p.m. Jr-Sr High Confirmation-Bible Class; Tues 7:30 pm, Adult Bible Study Wed. 7 pm Adult Bible Study
Pastor — Rev. Robert Benson — 1655 Airport Rd.
Phone — 677-7677

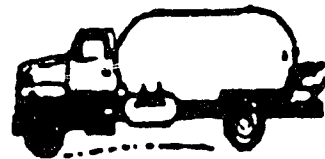
Living Water Catholic Church
Worship Mass: Sunday—2:00 p.m.
152 SOS Road
Ph: 677-2688 or 793-5697
Pastor—Father Jozef Perekhubka

Mountain Lakes Presbyterian Church
Presbyterian Church (U.S.A.)
Worship—10:00 a.m.
3292 Hwy 83 North Phone—677-3575
Pastor—Scott Anthony

Spirit of Christ Episcopal Fellowship
Worship—2nd Saturday of each month
at the Senior Center—5:00 p.m.
Phone—677-2905

Mission Bible Fellowship (Non-Denominational)
Sunday School ~ 9:15 a.m. Worship—10:30 a.m.
Summer Hours from Memorial Day to Labor Day
Hwy. 83 & School Lane
Phone 677-2110
Pastor Ken Wutzke

WESTERN FUEL



PROPANE SALES, SERVICE AND INSTALLATION

We've Moved to Lazy Pine Mall

Lazy Pine Mall • 3027 Hwy 83,
Seeley Lake, Mt 59868

We Do More Than Sell Propane!

Complete Sales and Service • Furnaces, Ranges, Space Heaters

24-HOUR EMERGENCY SERVICE

Montana-Owned & Operated

406-677-0180 • 1-800-792-4246

BUSINESS DIRECTORY

Second Hand • Fax Service

SEELEY LAKE

SECOND HAND STORE

OPEN 9 am to 6 pm Mon thru Sat

Fax Service • Photo Copies

677-3622

Corner of Locust & Tamarack up High School Road

Property Maintenance

Swan Valley

PROPERTY MAINTENANCE SERVICES

Since 1989

We provide:

- Yard & Grounds Maintenance
- Winterization of Cabins
- Interior/Exterior Painting
- Snow Removal
- Handyman Services
- Insured

Dave Stenhouse
P.O. Box 1023
Condon, MT 59826
(406) 754-2553

We can help you maintain your home and vacation property

Building Contractor

Linford Built Construction

Ted Linford • Contractor • Builder LLC

New homes • Additions • Remodels
Cabinets & Countertops
Montana Reg. & Insured

25 years of Building in the Valley

P.O. Box 1430 **406 677-2891** Seeley Lake, MT 59868

Contractor • Builder

WILL KATS CONSTRUCTION LLC

Residential Carpenter
Established 1980
Montana Registration Number: 20064

6380 Woodworth Road • Greenough, MT 59836
(406) 677-3068

Real Estate Sales

Charlee Parker
PO Box 176
Seeley Lake, MT 59868

Seeley Lake Broker for
Missoula Realty

406-210-1982
FAX: 406-677-2071

www.seeleylake.com/missoula Realty • CharleeP@blackfoot.net



Gas • Convenience • Lounge

The BACK DOOR & 1-STOP

Gas • Burgers • Shakes • Pizza

677-2004

Accountant • CPA

TERRY S. SHEPPARD
Certified Public Accountant

P.O. Box 129
Ovando, Montana 59854 • 0129

(406) 793-5718

Contractor • Builder

ADAMS CONSTRUCTION INC.

Custom Homes Log or Frame
Additions & Remodels

PH: 406 677-3029 P.O. Box 10
Fax: 406 677-0033 280 Eagle Drive
Mobile: 406 239-3125 Seeley Lake, MT

Newspaper / Advertising

Seeley Swan PATHFINDER

P.O. Box 702
Seeley Lake, MT 59868
406 677-2022

Propane Service

Energy Partners

CHARLIE HAHN
Branch Manager
Propane Installation & Service

Hwy 83 North • Seeley Lake, Montana 59868
Office **(406) 677-3656**
Cell (406) 677-4185 • Fax (406) 677-3657

Log Hauling / Water Service

Double Ott Trucking

Log Hauling & Water Service
3800 gallon water tender
with rear spreader & 3" pump

Kvande Anderson
Condon, MT 754-3063
Cell 253-5726

Excavating

GARY LEWIS
OWNER

406-677-2823
406-677-4072
Fax 406-677-3018

DEER CREEK EXCAVATING, LLC

P.O. Box 523 • Seeley Lake, MT 59868

Home Services / Maintenance

Do You Need ... ?

- House Winterizing or House Checks
- General Maintenance
- Lawn Care
- Snow Removal
- Lot Clearing... then CALL

Nature Scapes • (406) 677-8733



Electrician • Electrical Services

Lakeview Electric LLC

Commercial & Residential
Licensed & Insured

Arield & Emily Wasem - (406) 677-3500
Our business is electrifying
Our prices are not shocking
Call us to remove your shorts.

Tires / Automotive Service

TIRE RAMA

Randy Dahley
Sales Representative

www.tirerama.com
1012 Kensington • Missoula, MT 59801
Phone: 406-728-2010
Fax: 406-728-2011

HOMETOWN SERVICE • STATEWIDE COVERAGE

Newspaper / Advertising

Seeley Swan PATHFINDER

P.O. Box 702
Seeley Lake, MT 59868
406 677-2022

Taxidermy / Wildlife Art

Mountain Creek TAXIDERMY

Custom Wildlife Art
Located Woodworth Meadows

Rob & Raeann Henrekin
406 677-3502

Asphalt Paving & Maintenance

J. D. Parker Construction

Protect Your Pavement

Complete Asphalt Paving & Maintenance
Quality Asphalt Paving and Protective Coating
Pavement Striping, Hot Crack Sealing

Reasonable Rates • For Free Estimate
239-7151 Cell • 677-0234 Home

Legal Services

677-3006

Peasley Law Office, P.C.

- Real Estate • Land Development
- Business • Estate Planning
- Civil & Criminal Matters
- Personal Injury

Corner Hwy 83 & Locust Lane
P.O. Box 504

Hair/Nails/Tanning Salon

All Deeked Out

Hair, Nails & Tanning Salon
Hair — Becki
Nails — Karen
Hair Care for the Entire Family

677-5033

In the Filling Station Mall Seeley Lake, Montana

Bookkeeping

PROFESSIONAL BOOKKEEPING AND SECRETARIAL SERVICE

Affordable, Confidential, Experienced

Geanette Cebulski
Phone 406 677-3423

Hwy 83 & Redwood
P.O. Box 333
Seeley Lake, MT 59868

Propane Service

WESTERN FUEL

Propane Sales, Service & Installation
We Do More Than Sell Propane!

Complete Sales and Service • Furnaces, Ranges, Space Heaters

24-HOUR EMERGENCY SERVICE

Montana-Owned & Operated
406-677-0180 • 1-800-792-4246

Electrical Contractor

Seeley Electric LLC

William J. "Bill" Yiengst
Master Electrician

Office Ph: (406) 677-3020
Cell Ph: (406) 239-3279

United We Stand

Email: SeeleyElectric@TheElectriciansGuild.com
P.O. Box 306 Seeley Lake, MT 59868

Auto Body Shop

SEELEY LAKE AUTO BODY

Collision Repairs
Painting
Autoglass
Recreational Vehicles
Snowmobile Hood Repair
Insurance Approved

Randy Reinitz
677-5010

146 Larch Lane S. • P.O. Box 347 • Seeley Lake, MT 59868

Trash Hauling

Don't get down in the dumps, let

Larson Disposal

... do it for you

Seeley Lake, Montana 677-2252

Business Solutions

Tammie Westcott
Independent Accountant

WESTCOTT ENTERPRISES BUSINESS SOLUTIONS

550 Frontier Dr
Seeley Lake, MT 59868

Phone/Fax: 406-677-0168
Cell: 406-370-6799
Email: webcs@seeley@blackfoot.net

Resort Lodging

800-900-9016
406 677-2376

The Lodges
on Seeley Lake

Brian & Kerry

P.O. Box 568 • Seeley Lake • MT 59868
www.lodgesonseeleylake.com

Photography

Rhonda Malecha

PHOTOGRAPHY

Reasonable Rates

Weddings, Graduation, Family, Special Events, Studio & Outdoor Settings

(406) 677-3176

Notices

ATTENTION: Clearwater Towing is no longer associated with the Missoula County Junk Vehicle Program. Missoula County still offers to haul junk vehicles away free of charge. For more information call 406-258-4755.

Help Wanted

Earn Extra Income \$500-\$2000 weekly. Join the fastest growing industry in America, ecommerce. For more information send a self addressed stamped envelope to: eSource, PO Box 680610, Miami FL 33168.

Western Fuel, Inc. is currently seeking a full time delivery driver to deliver propane in the Seeley Lake and surrounding areas. Candidates are required to have a CDL license with hazmat, tanker, air brakes and current D.O.T. physical. This job requires working outside in all kinds of weather. Other duties will be required as needed. Candidates are required to have strong work ethics. Pay D.O.E. Resume may be sent to Western Fuel Inc., PO Box 298, Seeley Lake MT 59868 or faxed to 406-677-0380.

LOST

Missing/stolen from Rover's on 12/10: Jack Russell Terrier puppy, female, white w/brown spots, brown face & floppy ears.

Blackfoot Land Steward: The Nature Conservancy of Montana (TNCMT) is seeking a Blackfoot Land Steward to be responsible for stewardship work and general operations on lands owned by TNCMT in the Blackfoot Valley, Montana. This will be a three-year position with the possibility of an additional three years. It will coordinate with other organizations in the Blackfoot area. Qualifications: Bachelor's degree in biology, ecology, natural resources management or related field, and 2 to 3 years experience or related experience in land management. Experience working with or knowledge of natural systems. Knowledge and ability to use tools and equipment related to stewardship work. Ability to work effectively with diverse individuals and organizations. Position to be based within commuting distance of Ovando, Montana. Job description available by request: 406-443-6724. Send resume and cover letter to The Nature Conservancy of Montana, 32 South Ewing Street, Helena MT 59601. Application deadline: 1/16/04. Salary commensurate with experience.

Firewood, solid Doug fir, split & delivered, \$95/cord, 677-3142

King bed set, firm pillowtop, brand new in plastic, full warranty, retail \$1099, sell \$299, 406-253-2975, 206-239-2239 or 406-239-4171

Bedroom set, European cherrywood w/inlay design sleigh bed, large 15 drawer chest, armoire, 2 night stands, lovely, cost \$9000, sacrifice \$2800, 406-239-4171, 406-239-2239 or 406-253-2975

Cherry dining set, solid wood, traditional style, double pedestal table w/2 leaves, 8 chairs, lighted hutch & buffet, to quality, cost \$9000, sacrifice \$2800, 406-253-2974, 406-239-2239 or 406-239-4171

Pool table, brand new, never used, tournament quality, top line accessory package included, beautiful, cost \$4500, sacrifice \$1700, 406-253-2975, 406-239-2239 or 406-239-4171

Queen bed, mattress & box, still

For Rent

Mini storage units available. 98 units to serve your needs. Clearwater Mini Storage, LLC, 677-3000

Lone Larch Mini-Storage-located on Spruce Drive. Easy access in Seeley Lake, 677-2889 or 677-4133

Office space available, Heritage Building, 677-3838

Efficiency apartment, all utilities paid, \$300/mo, 677-3314

Office or retail space in the Lazy Pine Mall, 677-0206 or 406-210-1455

3 BR house, \$450/mo + deposit. Call Dusty, 406-857-2677 or 406-261-4030.

For Sale

Firewood, solid Doug fir, split & delivered, \$95/cord, 677-3142

King bed set, firm pillowtop, brand new in plastic, full warranty, retail \$1099, sell \$299, 406-253-2975, 206-239-2239 or 406-239-4171

Bedroom set, European cherrywood w/inlay design sleigh bed, large 15 drawer chest, armoire, 2 night stands, lovely, cost \$9000, sacrifice \$2800, 406-239-4171, 406-239-2239 or 406-253-2975

Cherry dining set, solid wood, traditional style, double pedestal table w/2 leaves, 8 chairs, lighted hutch & buffet, to quality, cost \$9000, sacrifice \$2800, 406-253-2974, 406-239-2239 or 406-239-4171

Pool table, brand new, never used, tournament quality, top line accessory package included, beautiful, cost \$4500, sacrifice \$1700, 406-253-2975, 406-239-2239 or 406-239-4171

Queen bed, mattress & box, still

For Rent

Mini storage units available. 98 units to serve your needs. Clearwater Mini Storage, LLC, 677-3000

Lone Larch Mini-Storage-located on Spruce Drive. Easy access in Seeley Lake, 677-2889 or 677-4133

Office space available, Heritage Building, 677-3838

Efficiency apartment, all utilities paid, \$300/mo, 677-3314

Office or retail space in the Lazy Pine Mall, 677-0206 or 406-210-1455

3 BR house, \$450/mo + deposit. Call Dusty, 406-857-2677 or 406-261-4030.

For Sale

Firewood, solid Doug fir, split & delivered, \$95/cord, 677-3142

King bed set, firm pillowtop, brand new in plastic, full warranty, retail \$1099, sell \$299, 406-253-2975, 206-239-2239 or 406-239-4171

Bedroom set, European cherrywood w/inlay design sleigh bed, large 15 drawer chest, armoire, 2 night stands, lovely, cost \$9000, sacrifice \$2800, 406-239-4171, 406-239-2239 or 406-253-2975

Cherry dining set, solid wood, traditional style, double pedestal table w/2 leaves, 8 chairs, lighted hutch & buffet, to quality, cost \$9000, sacrifice \$2800, 406-253-2974, 406-239-2239 or 406-239-4171

Pool table, brand new, never used, tournament quality, top line accessory package included, beautiful, cost \$4500, sacrifice \$1700, 406-253-2975, 406-239-2239 or 406-239-4171

Queen bed, mattress & box, still

For Sale

Firewood, solid Doug fir, split & delivered, \$95/cord, 677-3142

King bed set, firm pillowtop, brand new in plastic, full warranty, retail \$1099, sell \$299, 406-253-2975, 206-239-2239 or 406-239-4171

Bedroom set, European cherrywood w/inlay design sleigh bed, large 15 drawer chest, armoire, 2 night stands, lovely, cost \$9000, sacrifice \$2800, 406-239-4171, 406-239-2239 or 406-253-2975

Cherry dining set, solid wood, traditional style, double pedestal table w/2 leaves, 8 chairs, lighted hutch & buffet, to quality, cost \$9000, sacrifice \$2800, 406-253-2974, 406-239-2239 or 406-239-4171

Pool table, brand new, never used, tournament quality, top line accessory package included, beautiful, cost \$4500, sacrifice \$1700, 406-253-2975, 406-239-2239 or 406-239-4171

Queen bed, mattress & box, still

For Sale

Firewood, solid Doug fir, split & delivered, \$95/cord, 677-3142

King bed set, firm pillowtop, brand new in plastic, full warranty, retail \$1099, sell \$299, 406-253-2975, 206-239-2239 or 406-239-4171

Bedroom set, European cherrywood w/inlay design sleigh bed, large 15 drawer chest, armoire, 2 night stands, lovely, cost \$9000, sacrifice \$2800, 406-239-4171, 406-239-2239 or 406-253-2975

Cherry dining set, solid wood, traditional style, double pedestal table w/2 leaves, 8 chairs, lighted hutch & buffet, to quality, cost \$9000, sacrifice \$2800, 406-253-2974, 406-239-2239 or 406-239-4171

Pool table, brand new, never used, tournament quality, top line accessory package included, beautiful, cost \$4500, sacrifice \$1700, 406-253-2975, 406-239-2239 or 406-239-4171

Queen bed, mattress & box, still

For Rent

Mini storage units available. 98 units to serve your needs. Clearwater Mini Storage, LLC, 677-3000

Lone Larch Mini-Storage-located on Spruce Drive. Easy access in Seeley Lake, 677-2889 or 677-4133

Office space available, Heritage Building, 677-3838

Efficiency apartment, all utilities paid, \$300/mo, 677-3314

Office or retail space in the Lazy Pine Mall, 677-0206 or 406-210-1455

3 BR house, \$450/mo + deposit. Call Dusty, 406-857-2677 or 406-261-4030.

For Sale

Firewood, solid Doug fir, split & delivered, \$95/cord, 677-3142

King bed set, firm pillowtop, brand new in plastic, full warranty, retail \$1099, sell \$299, 406-253-2975, 206-239-2239 or 406-239-4171

Bedroom set, European cherrywood w/inlay design sleigh bed, large 15 drawer chest, armoire, 2 night stands, lovely, cost \$9000, sacrifice \$2800, 406-239-4171, 406-239-2239 or 406-253-2975

Cherry dining set, solid wood, traditional style, double pedestal table w/2 leaves, 8 chairs, lighted hutch & buffet, to quality, cost \$9000, sacrifice \$2800, 406-253-2974, 406-239-2239 or 406-239-4171

Pool table, brand new, never used, tournament quality, top line accessory package included, beautiful, cost \$4500, sacrifice \$1700, 406-253-2975, 406-239-2239 or 406-239-4171

Queen bed, mattress & box, still

For Sale

Firewood, solid Doug fir, split & delivered, \$95/cord, 677-3142

King bed set, firm pillowtop, brand new in plastic, full warranty, retail \$1099, sell \$299, 406-253-2975, 206-239-2239 or 406-239-4171

Bedroom set, European cherrywood w/inlay design sleigh bed, large 15 drawer chest, armoire, 2 night stands, lovely, cost \$9000, sacrifice \$2800, 406-239-4171, 406-239-2239 or 406-253-2975

Cherry dining set, solid wood, traditional style, double pedestal table w/2 leaves, 8 chairs, lighted hutch & buffet, to quality, cost \$9000, sacrifice \$2800, 406-253-2974, 406-239-2239 or 406-239-4171

Pool table, brand new, never used, tournament quality, top line accessory package included, beautiful, cost \$4500, sacrifice \$1700, 406-253-2975, 406-239-2239 or 406-239-4171

Queen bed, mattress & box, still

For Sale

Firewood, solid Doug fir, split & delivered, \$95/cord, 677-3142

King bed set, firm pillowtop, brand new in plastic, full warranty, retail \$1099, sell \$299, 406-253-2975, 206-239-2239 or 406-239-4171

Bedroom set, European cherrywood w/inlay design sleigh bed, large 15 drawer chest, armoire, 2 night stands, lovely, cost \$9000, sacrifice \$2800, 406-239-4171, 406-239-2239 or 406-253-2975

Cherry dining set, solid wood, traditional style, double pedestal table w/2 leaves, 8 chairs, lighted hutch & buffet, to quality, cost \$9000, sacrifice \$2800, 406-253-2974, 406-239-2239 or 406-239-4171

Pool table, brand new, never used, tournament quality, top line accessory package included, beautiful, cost \$4500, sacrifice \$1700, 406-253-2975, 406-239-2239 or 406-239-4171

Queen bed, mattress & box, still

STATEWIDE Classified Ad Network

The Pathfinder now offers you a one-step, inexpensive way to place advertising messages in 55 participating weekly and semi-weekly and 7 daily newspapers in Montana. The service offers you a circulation of 206,000 households (494,400 readers) for a low price of \$119 for a 25-word ad. Call 677-2022 for details.

BUSINESS OPPORTUNITIES

A-MARS/NESTLE Vending Route. Unique machine. Great opportunity! Prime locations available now! Excellent profit potential. Investment required, \$10k and under. Toll-free (24-7) 800-637-7444. #779

EARN A SIX FIGURE INCOME! Easily as an Info Broker! Free info and plane tickets! Extremely limited opportunity! Act now! www.cashmoneyportal.com #780

\$875.00 WEEKLY salary mailing our postcards from home. No experience necessary. FT/PT. Genuine opportunity. Supplies provided. Call 1-708-686-1300 (24hrs) #781

EDUCATION/INSTRUCTION

TRUCK DRIVER TRAINING. Complete programs and refresher courses, rent equipment for CDL, Job Placement Assistance. Financial assistance for qualified students. SAGE Technical Services, Billings, 1-800-545-4546. #782

ENROLL NOW! Big Sky Somatic Institute SCHOOL OF MASSAGE THERAPY. Comprehensive programs since 1996, weekend classes, convenient schedule, experienced faculty, financing plans! 1-866-442-8273 toll-free, mtsomatic@aol.com #783

FINANCIAL SERVICES

CASH FOR THE PURCHASE OF MORTGAGES, contracts, notes, settlements, annuities, escrows. Fast, professional service. Compare our prices! Creative Finance, Missoula, Montana's oldest! 1-800-999-4809. www.creative-finance.com #784

FOR SALE - MISCELLANEOUS

FREE 3-ROOM DIRECTV SYSTEM INCLUDING INSTALLATION! FREE 3 months HBO movie package w/subscription. Access 225+ channels. Digital-quality picture/sound. Conditions apply. Limited time offer. Call 1-800-311-8973. #785

HEALTH AND FITNESS

PHENTERMINE/VIAGRA: Get prescriptions without visiting a doctor and your medications at discount prices! Shipped in 24 hours! www.DietPillsWork.com #786

HELP WANTED

DRIVERS WANTED!! Davis Transport \$2500 sign-on bonus. *Long Haul *Full Benefits *Excellent Pay *LTL Freight *Flatbed training available. Owner-Operators welcome! 1-866-728-0120 www.davistransport.com #787

AMERICA'S AIR FORCE. Jobs available in over 150 careers, plus: *Enlistment bonuses for certain careers. *Up to \$10,000 student loan repayment. *Up to 100% tuition assistance. *High tech training. High school grads ages 17-27 or prior service members from any branch, call 1-800-423-USA or visit AIRFORCE.COM. U.S. Air Force. Cross Into The Blue. #788

FT NURSING POSITION in Rural Health Clinic, competitive wage, generous benefit package. Mountainview Medical Center, Box Q, White Sulphur Springs, MT 59645. 406-547-3321. #789

ACCESS TO A COMPUTER? Put it to work! \$1500+PT/\$3-\$5000+FT. Call 1-888-228-1475. www.youarepriceless.com #790

Drivers & O/O's...MORE CASH! NEW YEAR, NEW PAY! Sign-on bonus. Van, flatbed, autohaul & heavy haul. CDL Training available. SWIFT TRANSPORTATION 1-866-222-6646. www.swifttruckingjobs.com #791

THE CITY OF LEWISTOWN is accepting applications for a COMMUNITY DEVELOPMENT OFFICER, \$11.73/hour plus benefits. If interested contact Lewistown Job Service, 406-538-8701. #792

THE CITY OF LEWISTOWN is accepting applications for Fire Chief. Annual Salary of \$38,600 plus benefits. If interested contact Lewistown Job Service 406-538-8701. #793

MORTGAGES

MONEY TO LOAN -Land development •Multi-family •Office •Warehouse •Construction •Fees built-in •Poor credit •Bank turn downs •Fast closing. Questa Mortgage 406-837-7011; 800-887-5288. #794

STEEL BUILDINGS

STEEL BUILDING SALE!!! "Strong, versatile, dependable." www.sentinelbuildings.com. "Helping grow America one steel building at a time." Sentinel Buildings, 800-327-0790, Extension 26. #795

BUILDING SALE. "Final Clearance!" Priced to sell. No salesman. Go direct/save. 20x24, \$2,900. 25x30, \$3,900. 30x40, \$5,200. 35x50, \$6,900. 50x120, \$20,800. Others. Pioneer 1-800-668-5422. #796

Happy Birthday Mrs. Richey

We love you, Byron & Suzi

Lindley's Landing West BAYBURGERS

Open Thursday thru Monday • 11 a.m - 3 p.m.

Happy Birthday Mrs. Richey

We love you, Byron & Suzi

Lindley's Landing West BAYBURGERS

Open Thursday thru Monday • 11 a.m - 3 p.m.

WOLD'S VALLEY MARKET

Locally owned
& operated

One Mile South of Seeley Lake
on Scenic 83

A member of Associated Food Stores, Inc.
SEELEY LAKE, MONTANA



Open 7 Days A Week!
Sun thru Thurs: 7:00 a.m. to 9:00 p.m.
Fri & Sat: 7:00 a.m. to 10:00 p.m.

406/677-2121

WE ARE MEMBERS OF



SEE INSERT SPECIALS

Effective December 17, 2003 - December 23, 2003 • POSTAGE STAMPS • ATM MACHINE

ESPRESSO Booth

Easy Access from Whitetail Drive

Fall / Winter Hours

Mon - Fri 7 am to 2 pm
Sat & Sun 7 am to 1 pm



Special of the Week

"Oreo Cookie Latte"

Hershey's chocolate syrup & smooth Vanilla
flavoring are added to freshly steamed milk &
espresso for a wake up call
as great as the cookie!

Save .25 cents on any size this week!

"FYI"

Do the right thing, regardless of what others think.

*Christmas Eve Store closing at 6 p.m. Closed on Christmas
Day Thank you to all our loyal customers this year! Have
a happy & safe holiday season!*

Lunch is Ready...

Lunch Menu for this week...12/18 - 12/24

Thursday: Beef Pasta Soup, comfort food!

Friday: Pita Meal Deal sandwich, chips, drink & cookie

Saturday & Sunday: No soup but we have sandwiches

No Soup Christmas or New Year's week

~ 11 a.m. - 1:30 p.m.,

12 oz. Bowl Soup with crackers \$2.50, or cup \$1.25

Fun for the whole family!

Rich Ranch appreciation Day

Sunday, December 21 noon to 4

Lions Chili Cook off & feed, Sleigh & snowmobile rides
Santa-with treats for the kids & Bonfire

Nice time to get together with your neighbors, family & friends

Hosted by the Rich Ranch family

& sponsored by Seeley Lake Lions,
4H Club & Seeley Lake Chamber of Commerce

YMCA News Update on Activities

Adult Aerobics

Adult aerobics classes have begun. Join aerobics instructor Terry! Bartlett for morning walk fit and step classes. Participants have the option of walk fit or step class, warm up and stretch together, walk or step class followed by weights and stretch together. The walk fit can be outdoors walking the bike path, as long as weather permits.

- Session: September - May
- When: Monday, Wednesday, Friday, 8:15 - 9:15 a.m.
- Fee: \$25.00 per month Step Class; \$15.00 per month Walk Fit Class

Evening Aerobics

Please join us beginning January 6, 2004. Classes will be on Tuesday and Thursday evenings from 5:30 to 6:30 p.m. in the Seeley Lake Elementary School Multipurpose room. The fee is \$16.00 per month. You can add a morning class if you wish. The fee for 3 classes a week would be \$25.00 per month. Nancy Miller, Cindy Lewis and Kathy Harlock will take turns leading the class. They have been trained by Terry! Bartlett, certified instructor, and will lead classes in step and cardio toning exercises. Start the new year with a new you!

Please contact the YMCA Outreach office for information: Phone 677-3330 and/or e-mail: ssymca@blackfoot.net. The Seeley-Swan YMCA Outreach Office is located in the Lazy Pine Mall. Office hours are Monday, Tuesday & Thursday, 8:00 a.m. to noon, and Wednesday from 8:00 a.m. to noon and 1:00 to 5:00 p.m.