

# IT'S SNOWING ! Winterfest continues: Event Stories Inside

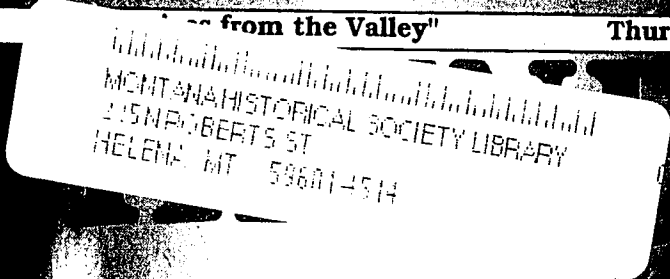
Sled Dogs & Mushers will be running in Mountains Saturday

Cocinando: Latin Big Band sound in concert here Saturday

Vol XVII, No. 39

from the Valley"

Thursday, January 23, 2003



<http://www.seeleyswanpathfinder.com>

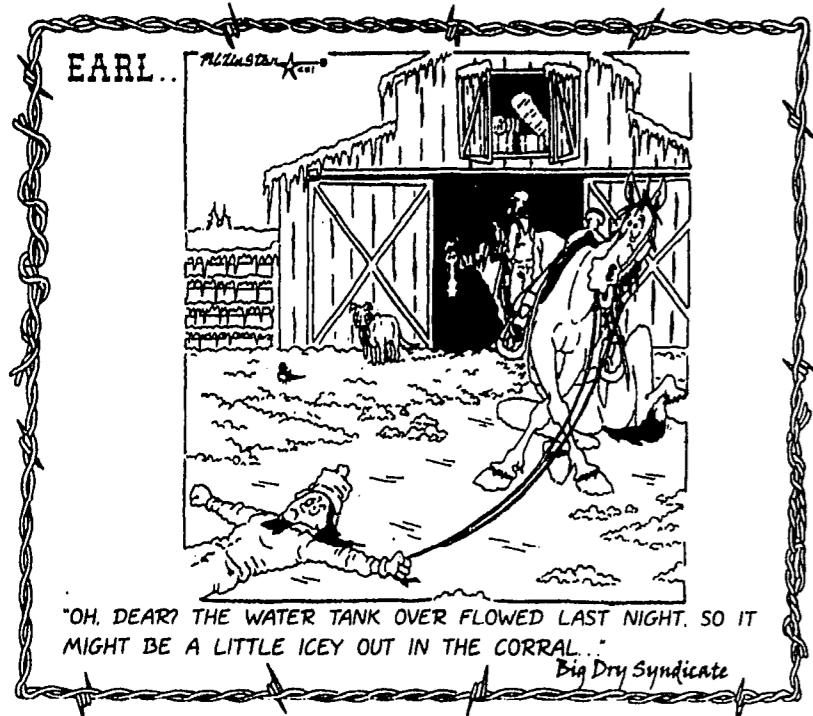
*Game Range  
Elk Count Up!*

## Bonfire kicks off Winterfest

Christmas trees were burned to start off the annual Winterfest celebration here last Friday.

*Deborah Stack photo*

email: [pathfinder@montana.com](mailto:pathfinder@montana.com)



"OH, DEAR! THE WATER TANK OVER FLOWED LAST NIGHT. SO IT MIGHT BE A LITTLE ICEY OUT IN THE CORRAL..."  
Big Dry Syndicate

Editorial Comment

# Chips . . . bits & pieces

OSCR, one of Seelye Lake's oldest winter events, is being cancelled this year, Lynn Carey said. There simply has not been enough snow to groom the trails, he said Tuesday night. Lynn has lived here all his life and has never seen a winter like this with so little snow on the valley floor for this time of year. If conditions improve, OSCAR may be held in February, so watch for possible notice of that. It did snow today. I actually scraped some off my car.

\*\*\*

We can joke about the lack of snow, but it is not a joking matter, despite the "Snow Joke Races" which will come off as the normal last winter event in the Seelye Swan. Summer pretty much takes care of itself, but this year we find out how dependent we are on winter recreationists, because they are not here in the numbers we are used to.

\*\*\*

The dogs are running, though, so get out and watch the mushers Saturday. Take in the Lions Club pancake breakfast, starting at 8 a.m. at the Seelye Elementary school, and meet the mushers there at 10:30 a.m. See story elsewhere. The snowcross snowmobile races are moved back to February. But a spicy Latin band offers choice entertainment at the high school Saturday afternoon, with Cocinando taking the stage at 12:30 p.m.

\*\*\*

So, Winterfest adapts to the elements. Snow sculptures are still possible, maybe miniature ones, if we get lucky! Have fun.

—Gary Noland

GARY NOLAND, EDITOR      PUBLISHER'S NOTICE      MILLIE NOLAND, ADVERTISING

Seelye Swan Pathfinder (ISSN 0894-2994, USPS000-919) is published weekly by Pathfinder Press, Inc., Box 702, Seelye Lake, MT 59868 (ph. 406/677-2022). Area served is Seelye Lake, Swan Valley and neighboring communities. Distribution is by mail subscription (\$20 per year in Missoula,

Lake or Powell County; \$25 per year elsewhere in U.S.) and by newsstand sales. Periodicals postage paid at Seelye Lake, MT. Postmaster: Send address changes to: Seelye Swan Pathfinder, P.O. Box 702, Seelye Lake, MT 59868-0702.

## Report from the Capitol Steps, A tale of Two States

By Rep. Doug Mood

A recent Associated Press news article relayed the budget problems that the state of California is experiencing as a consequence of the current economic slowdown. Their total budget deficit is predicted to be \$35 billion. Gov. Gray Davis (D) is proposing to deal with this massive problem by making deep cuts in school and health and welfare budgets. The California governor's proposal also includes tax increases of \$9.8 billion, which would cost the average California family from \$200 to \$250 per year.



While this would keep many of these programs from being eliminated, the cost of administering the programs would be borne by the local jurisdictions. This results in a cost shift that has to be absorbed by local government.

Here in Montana we are facing budget problems of our own. Those problems are being caused by the same economic slowdown. The solutions that we are proposing are significantly different however.

According to a recent editorial in the Wall Street Journal, Gov. Davis' proposal would increase fees for talking on the phone, hunting, filing a lawsuit, attending community college and even checking out a book at the library. He'd raise the cigarette tax by \$1.10 per pack, impose a brand new tax on Indian casinos and nudge the state sales tax up by one cent from a base of 7.25%. Gov. Davis would also raise the state's highest marginal tax rate to 11% for incomes above \$272,000. The 11% marginal rate is the same as Montana's highest rate and if his proposal is adopted by the Democrat controlled California legislature, they would join us in having the highest rates in the nation.

The tax increases that are being proposed would be funneled to local jurisdictions and would require them to take on a host of state health and welfare programs.

The Montana legislature looked at the revised revenue projections and realized that they were almost exactly the same as the revenue projections that we had for fiscal year 2000. That being the case, it made perfect sense to adopt the 2000 budget as the base budget for the current legislative session. I have seen several letters to the editor that have suggested that this move was equivalent to "Enron" or "voodoo" economic. I couldn't disagree more. If you are looking for slight of hand economics and voodoo solutions to budget woes, look to California. Here in Montana we are working our way through this budget crunch with a healthy dose of reality combined with ingenuity and innovation. I am proud to be a part of that kind of solution.

I look forward to hearing from the people of district 58 and I am trying to answer all of your correspondence. I can be reached at the following:

Telephone: 444-4815  
E-mail: d\_mood@hotmail.com  
Address: Capitol Station Box 7  
Helena MT 59620

## Fun time at DessertFest

Thank you Seelye Lake Area businesses and individuals for your support in making the DessertFest a success. The tasty desserts and beverages came from: Filling Station, Upper Deck, Seasons at Double Arrow, Hungry Bear Steak House, Pop's Place, Rovero's, and World's Valley Market. Missoula area desserts and beverages came from: In Good Taste, Sizzler Restaurant, Eddy's Bakery, 4 B's Restaurant, Perkins, Ruby's Café, Costco, Bernice's Bakery, Food for Thought, Great Harvest, Perkins Restaurant, Rosauer's, and Zip Beverage.

The donations came from: All Decked Out, Annie's Emporium, Center at Salmon Lake, Chicken Coop, Clearwater River Realty, Conrad Rowe, Darcy's Hair Designs, Deer Country Quilts, Double Arrow Resort, Energy Partners, First Valley Bank, Glen's Automotive, Great Bear Properties, Grizzly Claw Trading Post, Joy Clemens Vital Signs, Kozy Komer, Kurt's Polaris, Lake Upsata Guest Ranch, Lindy's Steakhouse, Luke's Gang Kickstarts, NAPA, One Stop Convenience Store, Pathfinder Press, Pop's Place, Rich Ranch, Rockinghorse Antiques & Collectables, Seelye Lake Flying Club, Seelye Lake Liquor Store, Seelye Lake Motor Lodge, Seelye Lake Pharmacy & Floral, Stage Station, Tamaracks Resort, The Ecosystem Management Research Institute, 2 Valley Stage, and World's Valley Market. Missoula Area Businesses include: Baskin & Robbins, Coca-Cola Bottling Company, and Pepsi Cola Bottling Company of Missoula. Other Area Businesses include: Big Sky Kettlecom.

Special thanks to: Dr. Frank J. Kuntz, Humor Adventure, for his stories & antics while playing the piano, and to Conrad Collins, guitarist, for their entertainment.

Extreme Gratitude goes to Pat Mitchell, Emcee; Bruce Wold & Kathy Harlock for assisting with the raffle tickets and auction; Tom Lehman for doing the auction; Luke Beaudry for calling all the dessert donors and Kathy Harlock for collecting the auction and raffle items; Nancy Madsen, Don Bissell, Gene Andrews, and Amanda Weaver for their trips to Missoula to pick up desserts; Joy Clemens and Cathy Novak for ticket sales & auction clerking; the kitchen staff: Pat Christianson, Luke Beaudry, Randi Parra, Koli Zahn, and Jennifer Brooks; set-up crew: Steve & Cheri Thompson, George Frasca, Ron Wallen, Zach Balcom, Pat Christianson, Randi Parra, Kathy Harlock, and Koli Zahn; clean up crew: Bob & Kathy Harlock, Bruce & Chris Wold, Pat Mitchell, Lynn Gumenberg, Luke Beaudry, Pat Christianson, and Jennifer Brooks.

Thanks to all these people who made this event a success and for taking some of the stress off my shoulders. You are greatly appreciated and made the event what it was! A Success!!

Marcy Zietz  
Seelye Lake Area  
Member of Commerce

## Home burns, Support is overwhelming

Dear Editor,

I have so much to be thankful for since my January 11th house fire. However, I never knew personally how much love and support this community could give until now. I send my love and gratitude to all of you for your love and support and donations. Thank you everyone for your concern for me, Katie and Madeline. We are most fortunate to live in this community.

A special thank you to the Seelye Lake Volunteer Fire Department & Ambulance Crew, Cheryl, Dave, Vera, Sean & Zach Evans, Tom Dimke, Andy Lukes, Richley & Woody Goodan, Ralph Kloser, Gene & Helen Andrews, Pam & Dan Morgan & kids, Dept. of State Lands, Nan Dunne-Boggs, N.D., Vickie & Locke Hassett, Tim & Karen Tanberg, David & Sylvia Edgell, Sharon Teague, Patti Dunlap, Beth Taylor, The Linford Family, Geri & Frank Netherton, Joye & Leroi Smith, Kerry Drew, Patti Freseman, Carlin & Danette Rammell, Mark Williams, Tonya Hals, Brenda Ashmore, Scott Anthony, The Mountain Lakes Presbyterian Church congregation, Holy Cross Lutheran Service Women in Service, Living Water Catholic Church, The Leelyn Cahoon Family, Vicki Scalise, Sylvia Roeder, Stacy Demerle, Loren Rose, Jeff and Pat Aresty, The Seelye Lake Pharmacy - Bob, Cathy & Angie, Charlee and Rett Parker, Sydney Johnson, Mariah Childs, and Niki Minjares.

Ginger Williams  
Seelye Lake, Montana

## Truly a Family

To all the wonderful people of Seelye Lake,

On December 15, our family was injured in a car accident, which could have easily become a tragedy. And even though the recovery will be long, we have so much to be grateful for. Because of the wonderful people of Seelye Lake, we have seen so much good come from such a bad experience. I have never seen so many people rally together to help another family in need. The support of the people here has been so overwhelming.

We need to give a huge thank you to all those great people who came to the scene and helped us. Thank for all you did to get us safely to the hospital. You did everything right and in turn saved the lives of both Alex and Kymberlyn. There was also a woman there who helped Alex while everyone else was still trapped in the van. We don't know your name, but we are so grateful to you for helping him and for staying with him. You made it easier on his mother, knowing that he was being taken care of.

A special thanks needs to be given to Ted and Karen Linford, Mark and Mary Meissner, Randy Teague, Sandy Irons, Gary and Nancy Miller, Jack Miller, Elder and Sister Wallace, Buddie and Molly Alred, Buford Kittrell, Kathleen Thompson, and Blackfoot Telephone and all its employees. Words cannot adequately express how grateful we are for all you have done for our family. We will always remember your kindness and service.

We have just recently become aware of a benefit fund set up for us at the bank. What an amazing thing to do for people who aren't very well known in the community. We've only lived here for three years, but this is truly our home, and you are truly our family.

Rick & Julianne McCracken and Family  
Seelye Lake, Montana

THE FAMILY OF BANKS

### Two Rivers Bank

Bonner/Milltown • 7676 Hwy. 200 • Just Before I-90 On Ramp

Phone: 406-258-2400 • Fax: 406-258-6600 • email: amorse@familyofbanks.com

Telephone Banking • 24 Hours A Day • 7 Days A Week  
1-866-279-3001 TOLL FREE Member FDIC

#### Lobby Hours

Monday - Thursday 8 a.m. - 5 p.m.  
Friday: 8 a.m. - 6 p.m. • Saturday 9 a.m. - 1 p.m.  
ATM In Bank Parking Lot  
"Drive-In Hours 7 a.m. to 7 p.m. Mon thru Fri"

The Two Rivers Bank is located at the intersection of Highway 200 and Interstate 90 at Bonner/Milltown. Two Rivers Bank is the third branch of the Bitterroot Valley Bank and the Family of Banks. The bank is named for its close proximity where the Clark Fork River and Blackfoot Rivers merge.

#### FAMILY OF BANKS

Bitterroot Valley Bank • Clark Fork Valley Bank  
Mullan Trail Bank (Superior & St. Regis) • Two Rivers Bank

## Preventive medicine for Medicare fraud.



If you need help making sense of complicated Medicare bills, we're here to help you, free of charge, all over Montana.

Please call us today, toll-free.

1-800-551-3191



Advocates in Medicare Savings

AIMS is a program coordinated by Missoula Aging Services and partnered with the MISA and local Area Agencies on Aging. This ad was supported, in part, by a grant from the ADA, DHHS. Points of view or opinions do not necessarily represent official ADA policy.

1-800-800-4260

GREAT BEAR PROPERTIES

677-3337  
LAZY PINE MALL  
HIGHWAY 83  
South End of Town

P.O. Box 569 • Seelye Lake MT 59868  
FAX 406/677-3060

Cozy Home and Cabin In the Swan Valley 1280 sq. ft. home on 1.16 acres. This cozy wood-sided home has a large paneled living room with log beams and cathedral ceiling. It includes a Waterford freestanding propane stove. There is a large master bedroom, light and bright remodeled kitchen, a large utility room, 1 full bathroom and 2 additional bedrooms for a total of 3. There is a nice deck off the kitchen. The property also includes a 2 bedroom, 1 bath cabin on a foundation and an older but functional 2 car garage. There are views of the Swan and Mission Mountains and it is just a short walk to the Swan River! \$119,000

Charlee Parker, Broker

Elmor Williamson      Ellie Greenough  
Kim Koppen

LOCATED on Hwy 83, Lazy Pine Mall on the Pond  
greatbearproperties.com • email: info@greatbearproperties.com

**The Daisy Ranch**

Historic Seelye Swan Valley Ranch dating back to the 1920's. This spectacular 160+ acre is approximately 70% meadow and 30% timber. Bertha Creek (spring fed) runs through the ranch which, coupled with the privacy, attracts an abundance of wildlife and bird life including elk herds, deer, wolves, coyotes, bear, beaver, herons, geese and ducks. This turn of the century ranch includes the original 2 story log ranch house, 5 stall barn, 5 stall hay shed, 2 small barns and corrals. The house was built with spruce logs and is in great condition! The main floor includes a mud room/utility room, country kitchen, dining room and living room with a new enamel wood stove and large windows letting in the beautiful views of the Swan Range. Upstairs includes 3 bedrooms and a remodeled bathroom with clawfoot tub and wainscoting. The private property is surrounded on 3 sides by Forest Service. Other possible building sites. \$1,250,000

# Record Elk Count on the Game Range

by Mike Thompson

What do you do when you approach a group of 539 elk in your helicopter, the elk all milling together at the edge of a timber stringer? Your job is to count the total, calves, spikes, raghorns, older bulls, and read symbols on collars. Perry Como was right. It's impossible.

So, you begin.

You begin by thoroughly working the country all around the big group, without disturbing or scattering the big group at all. Your strategy is to find and count all of the other elk within about a 1-mile radius, within clear topographic boundaries. You'll soon see why this is critical to your success.

After about 30-40 minutes of such preparation, you're ready to deal with the big group. Don't bother beginning your count. Wait for your long-experienced pilot, Ron Gipe, to make the impossible possible.

Like a fullback looking for a hole, Ron finds a crease in the line of elk and swoops toward it. The elk swarm to opposite sides of the helicopter. On one side is about 480 elk. We follow and herd the 59.

Ron works the small group patiently, and we observers beside him learn to be patient, too, wait-

ing for the elk to stop running and "string out" in a line. That's when we begin our count. Out of the corner of my eye, I notice Ron looking over his shoulder at the remaining big group, checking to see that they've remained in place.

When we've finished counting the small group, Ron pushes them where they want to go, somewhere within the surrounding area that we've already surveyed. That's how we sort them from elk we haven't seen or counted.

Now, it's back to the big group, and the next workable bunch that we can split off. The procedure is repeated 9 or 10 times, until no more elk are left standing where we first found them. Even then, we don't know how many we've counted altogether. We won't know that until later in the evening, when we take the time to add up all the small splinter groups to learn how many were in the big group.

As I mentioned, this year the big group numbered 539. Our work was unusually complicated this year by another group of 260 nearby, all in the low, grassy hills northeast of Clearwater Junction.

And, when we added up all of our groups, or I should say when our computer model added up all of our groups, we arrived at a total of 1,169 elk on the Game Range on January 8-9. According to this computer model, which I described in this column last week, we should have observed almost 99 percent of the elk that were there, based on the large group sizes and low cover associated with the elk this winter. So, our population estimate was 1,183 elk, an increase of only 14 "paper elk" from the actual count.

As you can see from the graph on this page, it's a record high count. In the sixth year after the severe winter of 1997, this elk population appears to have finally overcome the factors that were suppressing its rate of growth.

This is partly explained by a second consecutive year of reasonably good calf:cow ratios. This year's ratio was 31 calves per 100 cows, compared with 33 last year. We had seen calf:cow ratios higher than 27 in only one other year since we first fell below 30 in 1995. This year's total of 242 calves was the third highest since we started the annual helicopter survey in 1989.

While we're talking about records, check out the 84 spikes we saw this year, compared with the previous record of 82 in 1991.

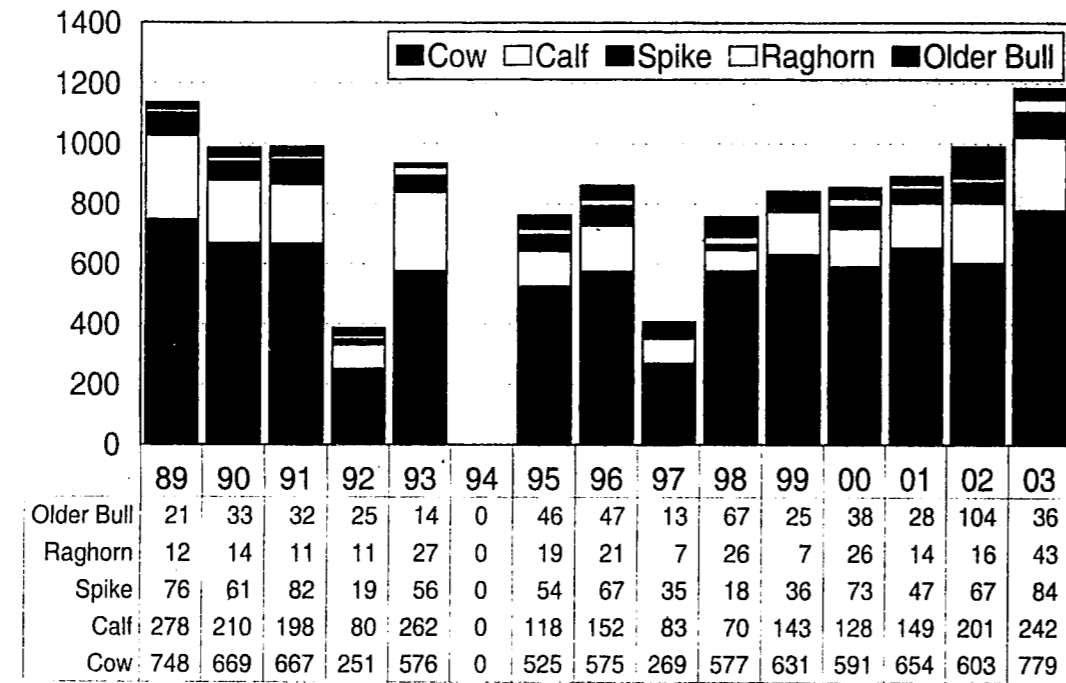
An abundance of spikes and calves means good hunting for bulls next year and an opportunity to offer more A-7 licenses for antlerless elk in the Seeley Lake area. Life is good.

**Game Range Ramblings**  
by Mike Thompson, Wildlife Biologist  
Montana Fish, Wildlife & Parks




## Elk Population Estimates

Blackfoot-Clearwater Game Range--Hunting District 282



Data from helicopter surveys in January or February (no survey in 1994)

**SEELEY-SWAN HIGH SCHOOL LADY BLACKHAWKS Basketball**

**Friday, Jan. 24**  
Granite at Seeley  
6:00 p.m. AB

**Friday, Jan. 24**  
Kalispell at Seeley  
4:15 C

**Saturday, Jan. 25**  
Darby at Seeley  
4:15 ABC

---

**SEELEY-SWAN HIGH SCHOOL BLACKHAWKS Basketball**

**Friday, Jan. 24**  
Seeley at Kalispell  
4:00 p.m. C

**Saturday, Jan. 25**  
Seeley at Darby  
4:15 p.m. ABC

**Thursday, Jan. 30**  
Kalispell at Seeley  
4:00 p.m. C

**WESTERN FUEL**  
*One's*

PROPANE SALES, SERVICE AND INSTALLATION 3182 Hwy 83, Seeley Lake, Mt 59668

**We Do More Than Sell Propane!**  
Complete Sales and Service • Furnaces, Ranges, Space Heaters

24-HOUR EMERGENCY SERVICE  
Montana-Owned & Operated  
406-677-0180 • 1-800-792-4246

## Swan Song

**Clarence Edmund Stilwell**  
Clarence Edmund Stilwell passed away in Sandpoint, ID on Friday, January 3, 2003.

A celebration of life service will be conducted at 11:00 a.m. on Saturday, January 25th, in the First Lutheran Church, Sandpoint, ID. Pastor David Olson will officiate.

Clarence was born September 15, 1910 in Granger, WA, the son of E.J. and Lucy Ann (Carter) Stilwell. He was raised on the family farm and educated in the elementary and secondary schools of Yakima County, WA. He loved to spend time in the forests of the eastern Cascades, and especially loved the majestic Ponderosa Pine stands.

Clarence graduated from the University of Idaho in 1934 with a BS degree in forestry. He worked for 35 years for the U.S. Forest Service, working on the Bitterroot, Flathead, Helena, St. Joe, Coeur d'Alene, and Kaniksu National Forests. He was appointed District Ranger for the Kingston District in 1948 and spent the last years of his forestry career in Sandpoint as head of timber management.

Clarence married Mabel S. Lundberg of Swan Valley in 1947. They raised five children: Olive (Jeff) Harris of Sandpoint, Jenise (George) Eskridge of Dover, ID, Joseph Stilwell of Lisbon, ME, Susan (Bob) Puckett of Sandpoint, ID, and Karla (Dwayne) Sheffler of Sagle, ID.

Clarence volunteered to join the Army Corps of Engineers for WW II. He was inducted at Ft. Lewis, WA and then shipped overseas on the British ship Acquitania. He saw action in England, Scotland, France, and Germany

as a transit surveyor. He received an "expert rifleman" and a "top shooter" award while in the Army.

Clarence retired from the Forest Service in 1968 and taught vocational forestry at North Idaho College for five years. During this time, he and Mabel began working on their log home along the Swan River in Montana. In 1973 they moved to the Swan Valley to complete their home and lived there until moving to Sandpoint for health reasons in October 2001.

Clarence was a member of the Lutheran Church, serving as a Sunday School Superintendent, teacher, and office holder. He was active in Lutheran Churches in Kellogg, Pinehurst, Sandpoint, and Condon, MT.

He was a member of the YMCA and Boy Scouts in Kellogg, PTA and Boy Scouts in Kingston, Boy Scouts and Lions Club in Sandpoint, National Association of American Retired Foresters, AARP, Flathead Audubon Society, and the Condon History Club.

Clarence is survived by his wife, Mabel Stilwell, four daughters, and a son, 14 grandchildren and 8 great-grandchildren, and a sister, Louise Peterson of Carson, WA.

He was preceded in death by his parents, a brother three sisters, and a great-grandson.

Clarence loved his family, the Forest Service, photography, hiking, fishing and all wildlife.

Memorials may be made to First Lutheran Church, 526 S. Olive, Sandpoint ID 83864; Faith Lutheran Church, Condon MT 59826; Grounded Eagle Foundation, Northern Rockies Raptor Center, 278 Kraft Creek Rd., Condon MT 59826; or Flathead Audubon Society, PO Box 9173, Kalispell MT 59904.

**Hungry Bear**  
Steak Seafood Pizza

Open 7 Days a Week

Breakfast 8 a.m.  
Lunch 11:30 a.m. • Dinner 5:00 p.m.  
Bar Opens at 4:00 p.m.

**Steak House**  
Swan Valley, MT • Hwy 83 MM 38-39 • 754-2240

## First Aid Classes Offered in the Swan

**Glen's Automotive Service**  
677-2141

I missed our 17th Anniversary in 2002 but I am back and feeling Great!!! Thanks for all your prayers and a special thanks to Linda, Dean & Bob!

First Aid and CPR classes will be offered at the Swan Ecosystem Center, January 29, February 1 and February 8. The content of the course on January 29 includes basic first aid around the home and CPR, each a half day course. Also, there will be an all day first aid course on February 1 and a half day course of CPR on February 8. All day classes will be 8:30-4:30 and half day classes will be 8:30 to 12:30. There are fees for these courses and participants must sign up by January 24. For further information and to sign up call Swan Ecosystem Center at 754-3137.

WPA AUTO CARE CENTER, AAA Approved Auto Repair, ASE, QUAKER STATE, Havoline

## Kimmel on honor roll

**BOZEMAN-** Montana State University Bozeman announces that 2,163 students have been named to the university's two honor roll lists for fall semester 2002. MSU Bozeman undergraduate students must complete a minimum of 12 credit hours to be listed on either the President's or Dean's List.

A total of 377 MSU Bozeman students earned a spot on the President's List with a perfect 4.0 grade point averages for the fall semester. An additional 1,786 students received grade point averages of 3.5 or above and were placed on the Dean's List.

Area students listed on MSU Bozeman's President's or Dean's Lists was Angela Kimmel, Seeley Lake.

**NORTHERN ENERGY**

COMPLETE PROPANE SERVICE & SALES

- Home Appliance Sales
- "Top of the Line" Ducane and Broilmaster BBQ's
- Refrigerators
- Ranges • Furnaces
- Water Heaters

406 721-2300  
NORTHERN ENERGY INC.  
3301 West Broadway  
P.O. Box 16044  
Missoula, MT 59808

**BEAT THE CLOCK**

THE TIME YOU ORDER IS THE PRICE YOU PAY FOR GREAT-TASTING PIZZA

PAY THE TIME ON THE CLOCK WHEN YOU ORDER ANY 2-TOPPING MEDIUM PIZZA BETWEEN 6-7:30 P.M. EVERY MONDAY NIGHT.

ANYTIME'S A GREAT TIME FOR HOT STUFF!

**ROVERO'S 677-2445**

**BLACKFOOT**  
Proud Sponsor of this Week's School Lunch Menu

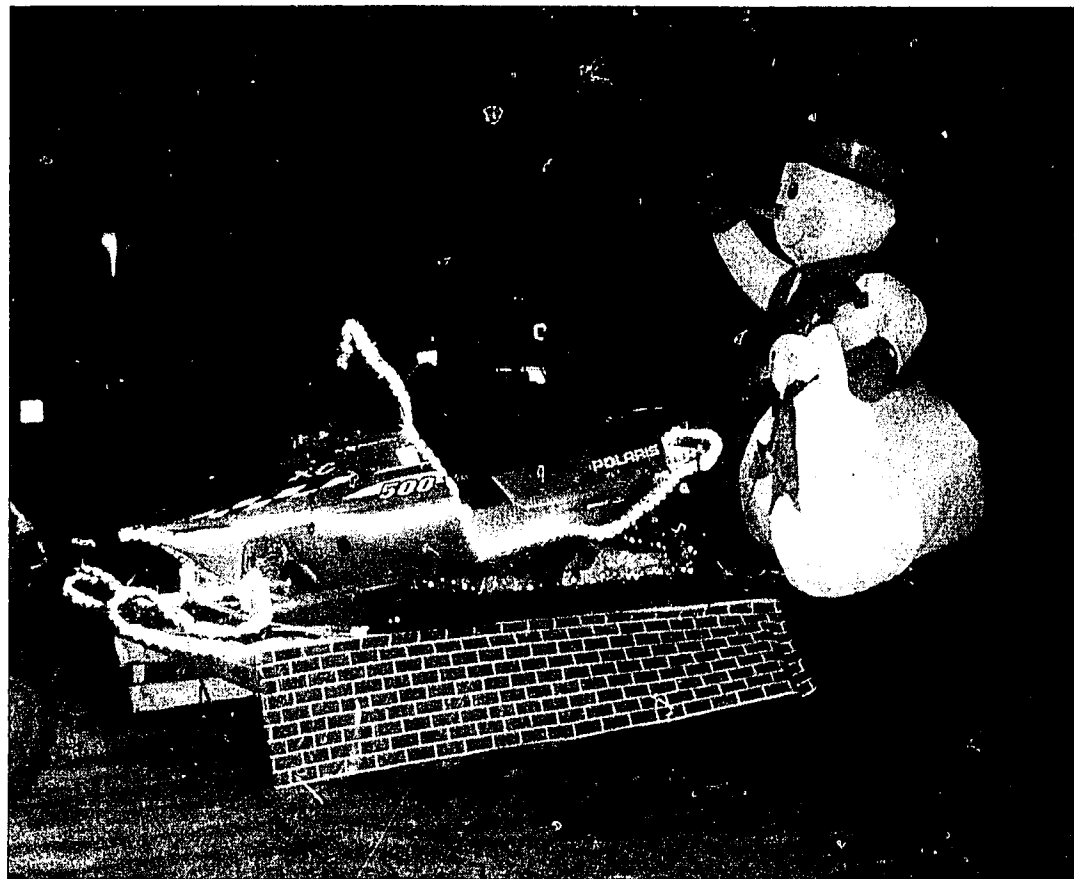
Offering a Full Menu of Telecommunication Services

**Week of January 27, 2003**

Monday, January 27: Chicken Nuggets  
Tuesday, December 28: Tacos  
Wednesday, January 29: Stew  
Thursday, January 30: Pork BBQ Sandwiches  
Friday, January 31: Chicken Fajitas

Sat., Jan. 25, 10 a.m. — Seeley at Phillipsburg.  
Tues., Jan. 28, 4 p.m. — Alberton at Seeley.

1-800-649-4108 www.blackfoot.net



## Seeley Lake sled dog race still running Saturday

by Gary Noland

For lack of snow, the annual OSCAR cross country ski races have been cancelled, the snowcross snowmobile races have been moved back to February, but guess what—the dogs will be running.

Norman Lee, race director, has found enough snow on the west side of Highway 83 to put together a 50-mile loop for the 17th Annual Seeley Lake Dog Sled race this weekend.

Lee said he wasn't sure until he rode the trails up around Marshall Lake, but he found "six feet of snow" in some places.

Besides that, he said, this is about the only qualifier for the Iditarod in the northwest this year. Most other sled dog races have been cancelled for lack of snow.

By Cheri Thompson

For the first time Winterfest nighttime parade, it was definitely a success. With 35 participants including: the lead torch bearing tractor from the Filling Station, Luke Beaudry with her illuminated kick sled, the boys, Dragon, the girls, Caterpillar, 2 go carts, 2 Clearwater towing trucks, Glen's Automotive with his race car, the ingenious snowmobile with wheels, and the one that has set the bar for float illumination, Wold's Valley Market.

The turn out of spectators was beyond our expectations and the tree contribution was nearly double from past years. Thanks again Seeley Lake for making a successful evening even without snow.

At 1 p.m. the mushers will be in the staging area at the Westside Trailhead and the race will get underway at 2:30 p.m.

Lee said the mushers will follow a 50-mile loop where snow should be adequate, and this year's race will feature 50, 100, and 200 mile classes.

Lee, also race director for Montana's Race to the Sky, said that race will also be run here at Seeley Lake after ceremonial starts in Helena and Lincoln.

Last year's race here drew 27 mushers, six of which were Iditarod race veterans. In previous years, and again this year, mushers will be coming here from several different states and Canada.

## Stork Report

Justin and Heather Layman of Seeley Lake are proud to announce the arrival of their baby, a boy, Jace Tyler Layman, 8 lbs. 9 oz., 20" long. He was welcomed to the world on January 2, 2003 at 12:58 a.m. He joins a very happy big sister, Kiley Dawn. He's a very special blessing.

Proud maternal grandparents are Peggy and Ralph Cahoon of Seeley Lake. Great-grandparents are Ron and Anita Richards, Helen Rich and Ressie Cahoon of Seeley Lake and great-great grandmother Doris Richards of Kalispell. Paternal grandparents are Lois and Donald Layman and great-grandparents Elsie and Carl Clayton of Sidney, Ohio.

## Swan Valley School December Awards

Kindergarten/First Grade - Anna Stevenson  
 Second Grade - Jake Janssen, Chase Hulett  
 Third Grade - Justin Hood  
 Fourth Grade - Rachael Burke  
 Fifth Grade - Nicole Everson, Cassie Moors  
 Sixth Grade - Gwen Rosen  
 Seventh Grade - Caitlin Stone  
 Eighth Grade - Steven Bergstrom  
 Geography Bee Winner - Jesse Kessler

## Seeley-Swan sweeps Deer Lodge, Lincoln

The Seeley-Swan High School Ladyhawk and Blackhawk basketball teams swept games this past weekend at Deer Lodge and Lincoln.

The Blackhawks, continuing strong, ran up another high scoring game when they downed Deer Lodge 90-55, behind Spencer Balcom's game high 21 points. Balcom got strong support from Abe Madinger with 19 points and Zach Nelson at 17 points. Rounding out another balanced offensive attack were Tanner Marfitt with 8, Rion Nash 8, Riley Devins 6, Bano Contreras 5, Cody Hard 4, and Brian Matthew 2.

The Blackhawks, who led by only two points, 20-18, after the first period, blew the game apart with a 20-2 run in the second period, and Deer Lodge never recovered.

Madinger and Nelson, each with 22 points, paced the offense against Lincoln as the Blackhawks cruised to a 65-47 win. Other Hawks scoring were Rion Nash 7, Spencer Balcom 3, Cody Hard 3, Bano Contreras 2, Riley Devins 2, and Ralph Cahoon 2.

### Ladyhawks Win

The Ladyhawks held on to a 32-16 lead after three periods to win 45-30 over Deer Lodge last Friday.

Sarah Madinger, 12 points, and Tatum Hoen, 10 points, paced the offense with Jessie Diamond adding 7, Blair Barthelmess 5, Hayley Blackburn 4, Sadie Linford 4, and Kaylee Williams 3.

Again the Ladyhawks jumped to an early lead against Lincoln and cruised to another win, 56-20, Saturday night, paced by Sarah Madinger's 15 points. Jesse Diamond added strong support with 11 points, Tatum Hoen 9, Kaylee Williams 8, Nicole Bostwick 4, Chasity Brown 4, and Sadie Linford 2.

## Latin music offered up in Cocinando Concert Saturday

by Mike Childs

Prepare your palettes for the spicy delights of hot Latin Jazz, steaming Salsa, soothing Boleros, and pulsating Mambos! The music is served Big Band style featuring Afro-Caribbean rhythms and traditional horn voicings by Cocinando, a twelve piece Latin jazz ensemble from the Flathead Valley.

Led by Mark Holston, Cocinando, which means "cookin'" in Spanish, delights audiences with the Cuban dance music and classic Latin Jazz of such acclaimed artists as Cal Tjader, Tito Puente, Eddie Palmeri, and Celia Cruz to name a few. The group has headlined at major festivals and performing arts functions here in the Northwest. Highlights have included First Night and Out to Lunch concerts in Missoula, The Flathead Festival, The Montana Ballet Company's annual black tie event, The Mount Helena Music Festival, the annual pops concert of the Glacier Orchestra, and many others.

Featured in 2 Valleys Stage's Winter Fest Concert, Cocinando begins playing at 12:30 p.m. January 25th in the C.B. and Helen Rich Activity Center (Seeley Swan High School big gym). However, the party really starts at 11:30 a.m. in the lunch room with the high school's Drama Club selling burrito plates and sparkling lemonade for \$3.50. Proceeds will benefit the high school Drama program.

To thank this year's marvelous Seeley/Swan area patrons of 2 Valleys Stage, ticket prices are reduced to \$12 for single adults or



\$20 for two—a Big Band experience for little band prices! Senior tickets remain at \$10 and student tickets at \$4. Each Seeley/Swan student who brings a parent is admitted free (one student per parent). You can buy tickets before the concert at Books, Yarn, and More in Seeley or The Swan Ecosystem Center in Condon. Call 677-3171 for additional information.

And there's more! For art lovers, Pat Swan Smith's and Bev Evan's sunflower photos are on display and to please dancers, the

mat will be rolled up after intermission allowing the Cha Cha Cha and Mambo maniacs among us to express themselves (in stocking feet of course!).

Latin music, dancing, food,

art—what better preventative medicine for cabin fever could one imagine? Cocinando—cookin' that's food for the soul.

Get yours in Seeley Lake on Saturday, January 25th.

## Changes/Additions to Winterfest Activities

The Seeley Lake Lions Club will have a Pancake Breakfast on Saturday, January 25 at Seeley Lake Elementary School from 8:00 a.m. to noon. \$3.50 adults. \$2.00 under 12.

The location for the start of the Seeley Lake 100/200 has been changed to the Fawn Creek/Westside trailhead at 2:30 p.m. on Saturday, January 25. Spectator viewing will be at 1:00 p.m. at the trailhead. The Race will finish on Sunday, January 26 at the trailhead.

## Night-time parade kicks off Winterfest

### Please Pause For Pets and Paws

#### Paws Up

to all of you who responded to the search for the German Shepherd with the \$1000 reward. The dog has not been found, but it is so great knowing so many people cared!

#### Paws Down

We love the snowmobilers, but please people, do not let your dog run along side. Your dogs get lost. Your dogs get hurt. Leave your dogs out of harm's way.

#### Have You Noticed?

The Avon wagon which helps us at Paws Up so much has been seen parked down at our many favorite eating places. Molly and MaGee are desperate since Jackie hurt her leg. Yes, Bill has been doing the cooking. Well, can you blame those hard working dogs? HURRY JACKIE AND GET WELL! To Molly and MaGee, thank you!

#### Spay and Neuter Clinic Coming!

We are starting to work on our spay and neuter clinic, to be held in April. We already have a great \$75 gift certificate from Jackie Buitenhuis for Avon products ordered from Molly, MaGee and Jackie. More next week on our prizes.

\*Minimum fee for dogs recovered at Paws Up Safe Home - \$25.00

Elinor Williamson, 406 677-2174 PO Box 522 Seeley Lake, MT 59868 Non-profit #368168	Paws Up Safe Home Renee Stowe 406 677-3435 PO Box 323 Seeley Lake, MT 59868
---	---

## SNOW PLOWING & SANDING

Get signed up on our list EARLY as routes are filling up fast. Special rates for driveways on The Double Arrow Ranch.

**John Richards**  
406-677-2600

If no answer, leave message or Call 677-2344



## Seeley Lake Day Care

Now has openings

### For full time child care

- \* State Registered and Insured
- \* Participant Child Care Resources Food Program
- \* Member Montana Child Care Association
- \* Member National Association for the Education of Young Children
- \* Member National Association for Family Child Care
- \* Level Three on Montana Early Care and Education Practitioner Registry.

For more information Call Pam at 406-677-2834

One room.  
One teacher.  
Eight students.

The Smithsonian.  
The British Museum.  
The Library of Congress.

Thanks to a super-fast DSL Internet connection, the kids at Sunset Hill School in Greenough, Montana have the world at their fingertips.

We're proud to make it possible.

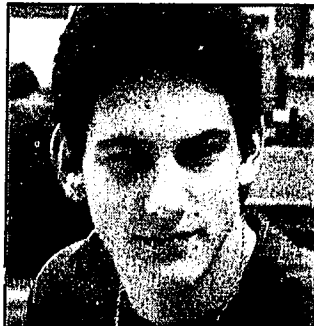
**BLACKFOOT**

800.649.4106 www.blackfoot.net

## SSHS Students of the Week



**Hayley Blackburn** - Hayley is an excellent student. She is conscientious about her school work and has been a member of the National Honor Society. She is currently president of the Junior Class, and participates in basketball and golf.



**Abe Madinger** - Abe is a conscientious student. He has a positive attitude and is a congenial person. Abe has participated in football, basketball and track. He was recently named to the All-State Football Team and was selected to play in the East-West Shrine Game.

Students of the Week submitted by staff at SSHS

The World's Gateway to the Seeley Swan

## Attend the Church of Your Choice!

### Seeley Lake Church Directory

**Faith Chapel (Pentecostal Church of God)**  
Worship-10:30 a.m. Sunday School-9:30 a.m.  
Hwy 83 North Phone-677-2220  
Pastor-Gary Wayne

**Seeley Lake Baptist Church**  
Worship-11:00 a.m. -Sunday School 9:45 a.m.  
-Sunday Evening 6:30 p.m. -Wed. Bible Study & Prayer 6:30 p.m.  
3116 Hwy 83 South Phone-677-2268 (Founded 1953)  
Pastor-Bill Bogardus

**Holy Cross Lutheran Church**  
Sunday Worship-9:00 a.m.  
Pastor - Rev. Robert Benson -1655 Airport Rd.  
Phone-677-2281 or 677-7677

**Living Water Catholic Church**  
Worship Mass: Sunday-2:00 p.m.  
152 SOS Road  
Ph: 677-2688 or 793-5697  
Pastor-Father Jozef Perhubka

**Mountain Lakes Presbyterian Church**  
**Presbyterian Church (U.S.A.)**  
Worship-10:00 a.m.  
3292 Hwy 83 North Phone-677-3575  
Pastor-Scott Anthony

**Spirit of Christ Episcopal Fellowship**  
Worship-2nd Saturday of each month  
at the Senior Center-5:00 p.m.  
Phone-677-2905

**Mission Bible Fellowship (Non-Denominational)**  
Sunday School- 9:15 Worship-10:30 a.m.  
Hwy. 83 & School Lane  
Phone 677-2110  
Pastor Ken Wutzke

## Local agent earns "buyers agent" award

Kim Koppen with Great Bear Properties has been awarded the Accredited Buyer Representation (ABR®) designation by the Real Estate BUYER'S AGENT Council, Inc. (REBAC) of the NATIONAL ASSOCIATION OF REALTORS® (NAR).

"Today's real estate brokers and agents want to provide a full menu of services for their clients, whether they are buyers or sellers," explains Terrence M. McDermott, President and CEO of REBAC. "The ABR® designation, the benchmark of excellence in buyer agency service, demonstrates to clients that the agent has taken steps to continue their education in the field of buyer representation, and has the proven experience and training to deliver ethical and professional service to real estate buyers."

Kim Koppen joins more than 24,000 real estate professionals in North America who have earned the ABR® designation. The requirements for this coveted designation include a comprehensive two-day course in buyer representation, a written examination on legal and practical aspects of client representation, and practical experience in the field of buyer



Kim Koppen

representation.

REBAC was founded in 1988 and currently has more than 34,000 members throughout the world. THE NATIONAL ASSOCIATION OF REALTORS®, "The Voice for Real Estate," is the nation's largest professional trade association, representing nearly 720,000 members involved in all

aspects of the real estate industry. You can contact the Real Estate BUYER'S AGENT Council, Inc. at 800-648-6224 or visit their website at www.REBAC.net.

## Chess Club Forming at Seeley Lake Elementary

The Seeley Lake Elementary School Chess Club will start meeting for an hour after school every Thursday, starting on January 23, 2003 at the Dragon Room at the Elementary School. Any adult who would like to help is welcome to come.

## Condon Area Senior Lunch

The Hungry Bear Steak House is serving lunch to Condon area seniors (60 and older) on Mondays and Thursdays at 1:00 p.m. Please call the Hungry Bear at 754-2240 for reservations prior to 5:00 p.m. the day before. This program is sponsored by Swan Valley Senior Services.

**Thursday, January 23**  
Cranberry Juice, Sweet & Sour Pork, Rice, Green Salad, Cake, Peaches.

## Double Arrow Landowners Why Haul, When We Haul?

Larson Disposal now serves all the Double Arrow Ranch with Year-Round Garbage Service. Carts will be furnished with the service. Weekly or bi-weekly schedules available. **CALL FOR RATES & SCHEDULES 677-2252**



### Chicken Coop & Lounge

Chicken Dinners Our Specialty

Cafe Phone 677-2980 • Lounge Phone 677-9214

*Fry 'em Hawks!*

Open 7 AM  
7 Days a Week

Breakfast • Lunch • Dinner

Hwy 83 • Seeley Lake, Montana

## Senior Nutrition Program Menu

The following meals will be served next week promptly at noon at the Seeley Lake Senior Citizens Center. Reservations please - 677-2008. Call before 10:00 a.m.

**Monday, January 27**  
Salisbury Steak  
**Tuesday, January 28**  
Pork Pot Pies  
**Wednesday, January 29**  
Turkey a la King with Biscuits  
**Thursday, January 30**  
Ham & Swiss Noodle Bake  
**Friday, January 31**  
Cabbage Rolls

## BUSINESS DIRECTORY

<p><b>Saddle Maker - Leather Works</b></p> <p><b>CLEARWATER LEATHER CO.</b> Priced for the Average Person</p> <p>Leather work &amp; repair Leather Tooling Decker Pack Saddles Saddle Repair</p> <p>Purses, Belts, Holsters, etc. Figurera, Pictorial, Traditional New &amp; Repair All Pack Saddles New Padding, Stirrups, Skirting, etc.</p> <p><b>John ("Jack") Neibauer</b> P.O. Box 1021 406 677-3274 Seeley Lake, MT 59868</p>	<p><b>Building Contractor</b></p> <p><b>Seeley Lake Enterprises</b></p> <p>*Electrical and General contracting *New homes, remodel, and repair *15 years experience in all phases of construction *Consulting and planning *24 hour emergency service</p> <p>Chris Neibauer General contractor/Licensed electrician Home... (406) 677-3159 Cell... (406) 210-1338</p>	<p><b>Plumbing, Heating Service</b></p> <p><b>HERITAGE PLUMBING &amp; HEATING L.L.C.</b></p> <p>COMMERCIAL &amp; RESIDENTIAL HOT WATER HEATING (406) 677-3838 • P.O. Box 1356</p> <p>Ken Schmitz 677-3838 Seeley Lake, MT 59868</p>	<p><b>Contractor • Builder</b></p> <p><b>LAKE COUNTRY BUILDERS INC.</b></p> <p>Custom • Residential • Commercial Mark Williams Tim Tanberg 677.3448 677.2841</p>
<p><b>Pharmacy • Floral • Gifts</b></p> <p><b>Seeley Lake PHARMACY &amp; FLORAL</b></p> <p>Bob Sufesak RPH P.O. Box 575 • SEELEY LAKE, MT 59868 Phone 677-2424 FAX 406-677-3333 CARDS • GIFTS • FLOWERS • PRESCRIPTIONS • FILM DRUGS • TOYS • COSMETICS</p>	<p><b>Complete Electrical Service</b></p> <p><b>Creekside Electric Inc.</b></p> <p>Complete Residential &amp; Commercial Wiring Services P.O. Box 287 • Seeley Lake, MT 59868 Phone &amp; Fax: 406 677-0050 Toll Free: 1-866-531-1091 Cell Phone: 406 210-1759 Email: Creekelectric@yahoo.com</p>	<p><b>Home Repairs / Building Projects</b></p> <p><b>Carl's Home Services</b> Call 677-2879</p> <p>Home Repair - New Building Projects - Remodeling - Property Maintenance - Yard Work - Fence Building - Property Clean-up - Outbuildings - Painting - Snow Removal - Winterization - Free Estimates 17 Years Experience - References</p>	<p><b>Veterinarian Services</b></p> <p><b>Swan Valley Equine Service</b></p> <p>Leslie L. Strobe, DVM 24-hour Mobile Veterinary Care Reproductive Ultrasound, Lameness, Dental, X-ray. 406 677-4130 406 837-1168</p>
<p><b>Newspaper / Advertising</b></p> <p><b>Seeley Swan PATHFINDER</b></p> <p>P.O. Box 702 Seeley Lake, MT 59868 406 677-2022</p>	<p><b>Tools &amp; Equipment Rentals</b></p> <p><b>Rent-All</b></p> <p>Tools &amp; Equipment for Homeowners &amp; Contractors Monday thru Friday 8 a.m. - 5 p.m. Open Saturday 9-5 677-2200 165 Radwood Lane Behind Timberline Building Materials</p>	<p><b>Pet Grooming / Boarding</b></p> <p><b>Mountain View Boarding &amp; Grooming</b></p> <p>Ella Goodbread Call 677-2572 for Appointment</p>	<p><b>Hair Styling</b></p> <p><b>Darcy's Hair Designs</b> Hair Styles for Everyone</p> <p>PO Box 634 • Seeley Lake, MT 59868 (406) 677-2677</p>
<p><b>Logging Professionals</b></p> <p><b>HAMILTON ENTERPRISES</b></p> <p>Accredited Stewardship Logging Professionals Heavy Equipment Hauling General Logging • Road Building • Forest Stewardship</p> <p>Daniel Hamilton Travis Hamilton (406) 754-2445 (406) 261-8306 Cell (406) 239-1340 Cell (406) 261-8306 Salmon Prairie Rd • Swan Valley • MT 59911</p>	<p><b>Designs for the Home or Office</b></p> <p><b>Glacier Mountain Design</b></p> <p>Carpet - Laminates - Natural Stones Slab Granite Counters - Wood - Tile 406-677-8889 -- 406-239-2520</p>	<p><b>Sand / Gravel / Roads / Excavating</b></p> <p><b>Sand &amp; Gravel</b></p> <p>Driveway Rock Clearing &amp; Excavating Roads &amp; Driveways SANDING &amp; SNOWPLOWING <b>John Richards</b> 677-2600</p>	<p><b>Home Maintenance</b></p> <p><b>HERITAGE Home Maintenance</b></p> <p>Seeley Lake, Montana (406) 677-3838 • (406) 677-2600 Light Duty Maintenance Services Winterizing • Door repairs • Window repairs Flooring Repairs • Job clean up Painting • "Small 'fix it's" (406) 677-3838 • P.O. Box 1356</p>
<p><b>Motel / Lodging</b></p> <p><b>SEELEY LAKE MOTOR LODGE</b></p> <p>Clean, Comfortable, Affordable Downtown location with easy trail access</p> <p>Bob &amp; Kathy Harlock 2300 Hwy 83 N, MM 14.5 PO Box 37 Seeley Lake, MT 59868 (406) 677-2935 (800) 237-9378 Fax (406) 677-3213 rdn@motorlodge.com seeleylakemotorlodge.com</p>	<p><b>Tree Removal Service</b></p> <p><b>Badger Tree Service</b></p> <p>25 Years Experience Phone (406) 756-3000 Cell (406) 250-3068</p>	<p><b>Newspaper / Web Site Development</b></p> <p>seeleylake.com or seeleyswan.com</p> <p><b>PATHFINDER</b></p> <p>406 677-2022</p> <p>Go to Business Section to see Representative Work We Can Do For You!</p>	<p><b>Message Therapist</b></p> <p><b>3D MESSAGE</b> Donna's Delicate Digits</p> <p>Dr. Donna Hoffmann Message Therapist</p> <p>P.O. Box 324 Seeley Lake, MT 59868 Home: (406) 677-3689 Cell: (406) 210-1033 three_d_message_4u@yahoo.com American Massage Therapy Association</p>

**DUMP CABLE!! Get a FREE DISH FROM DISH NETWORK SATELLITE TV**

# FREE DISH!



Get a FREE DISH Network digital satellite TV system (MSRP \$149) and FREE Standard Professional Installation (MSRP \$199). That's up to a \$348 value! Just subscribe to America's Top 50 for only \$22.99 per month.

**The Lowest All-Digital Price in America \$22.99 MO.**

With valid major credit card & 12 month commitment required. Equipment may be new, remanufactured or discontinued based upon availability.

**America's Top 50 Includes These Favorite Channels: ESPN, CNN, TNT, History, Lifetime, Disney, Nickelodeon, CMT, Sci-Fi, Discovery, TLC, VH1, MTV, A&E, TBS, and many more.**

**Eagle Satellite** • Serving All Montana  
(406) 721-3662 or (888) 565-6064

Offer ends 1/31/03. All prices, packages and programming subject to change without notice. Available for new, first-time residential customers only. Supplies limited to available stock on hand. Local and state sales taxes may apply. All DISH Network programming, and any other services that are provided, are subject to the terms and conditions of the Residential Customer Agreement, which is available upon request. Hardware and programming sold separately. Significant restrictions apply to DISH Network hardware and programming availability, and for all offers. A \$240 Cancellation Fee applies for each termination of service contract. Equipment may be new, remanufactured or discontinued based on availability. See your DISH Network Retailer, DISH Network product literature or the DISH Network website at www.dishnetwork.com for complete details and restrictions. All service marks and trademarks belong to their respective owners.

**DISH NETWORK MAKES IT SIMPLE**

# BUSINESS DIRECTORY

**Second Hand • Fax Service**

**SEELEY LAKE**

**SECOND HAND STORE**

OPEN 9 am to 6 pm Mon thru Sat

Fax Service • Photo Copies

**677-3622**

Corner of Locust & Tamarack up High School Road

**Contractor • Builder**

**(406) 677-3396**

**MORRIS BUILDERS**

**Brian Morris - Owner**

MT Reg. #12599

P.O. Box 1249 101 Rainbow Ct.  
Seelye Lake, MT 59868 Double Arrow Ranch

**Stonework / Fireplaces, ETC**

**Professional Stoneworks**

P.O. Box 1136  
Seelye Lake Montana 59868

Specializing in all of your rock work requests  
Fireplaces, Walls and Pillars

Call Steve or Tim for your free estimate (406)899-6975  
(406)677-4078

We offer outstanding customer service and great quality!

**Massage Therapy**

**Seeley Lake**

**Massage Therapy**

Massage Therapist

PO Box 199 • Seelye Lake, MT 59868

Cell: 406-677-4400  
Phone: 406-677-2806  
E-mail: BulckRus@aol.com

**Rita Rossi**

**Taxidermy / Wildlife Art**

**Mountain Creek**

**TAXIDERMY**

**Fine Wildlife Art**

Located Woodworth Meadows

**Rob & Raeann Henrekin**

**406 677-3502**

**Bookkeeping**

**PROFESSIONAL BOOKKEEPING**

**AND SECRETARIAL SERVICE**

Affordable, Confidential, Experienced

**Geanelle Cebulski**

Hwy 83 & Redwood  
P.O. Box 333  
Seelye Lake, MT 59868  
Phone 406 677-3423

**Trash Hauling**

Don't get down in the dumps, let

**Larson Disposal**

... do it for you

**Seelye Lake, Montana 677-2252**

**Property Maintenance**

**SWAN VALLEY**

**PROPERTY MAINTENANCE SERVICES**

Since 1998

We provide:  
Yard & Grounds Maintenance  
Winterization of Cabins  
Interior/Exterior Painting  
Snow Removal  
Handyman Services  
Insured

Dave Stenhouse  
P.O. Box 1023  
Condon, MT 59826  
(406) 754-2553

We can help you maintain your home and vacation property

**Gas • Convenience • Lounge**

**The BACK DOOR LOUNGE & 24 Hour 1-STOP Gas**

Call in orders for the following can be ready in 10 minutes.  
Burgers and other sandwiches in 15 minutes.  
Any item below \$2.75. Fries only \$2.50

Teasers • Deep Fried Vegetables • Onion Rings  
Egg Rolls • Fries • Cheese Sticks • Buffalo Wings  
Mushrooms • Gizzards

**677-2004**

**Propane Service**

**Energy Partners**

**CHARLIE HAHN**  
Branch Manager

Propane Installation & Service  
Hwy 83 North • Seelye Lake, Montana 59868  
**Office (406) 677-3656**  
Cell (406) 677-4185 • Fax (406) 677-3657

**Electrician • Electrical Services**

**Lakeview Electric LLC**

Commercial & Residential  
Licensed & Insured

Arield & Emily Wasem • (406) 677-3500

Our business is electrifying  
Our prices are not shocking  
Call us to remove your shorts.

**Insurance**

**FARMERS INSURANCE GROUP**

**SEELEY LAKE**

Corner of Hwy 83 & Locust Lane  
**Billie Sytsma, Agent 677-3090**

**Propane Service**

**WESTERN FUEL**

Propane Sales, Service & Installation  
3182 Hwy 83  
Seelye Lake, MT 59868

**We Do More Than Sell Propane!**

Complete Sales and Service • Propane, Gas, Space Heaters

**24-HOUR EMERGENCY SERVICE**

Montana-Owned & Operated  
**406-677-0180 • 1-800-792-4246**

**Contractor / Homes / Commercial**

**WOODHOUSE CONSTRUCTION, Inc.**

custom homes • light commercial  
standard & timber frame construction

EIN #81-0498223 Established 1984 MT Reg. #13352

**STEVE WOODHOUSE, PRESIDENT**

Phone (406) 362-4087  
Toll-free 1-866-362-4087  
Fax (406) 362-4621  
PO Box 487  
Lincoln, Montana 59639

Independent Builder/Dealer  
woodhouse@timberframe.com

**Building Contractor**

**Linford Built Construction**

Ted Linford • Contractor • Builder

New homes • Additions • Remodels  
Cabinets & Countertops  
Montana Reg. & Insured

25 years of Building in the Valley  
P.O. Box 1430 **406 677-2891** Seelye Lake, MT 59868

**Accountant • CPA**

**TERRY S. SHEPPARD**  
Certified Public Accountant

P.O. Box 129  
Ovando, Montana 59854-0129

**[406] 793-5718**

**Log Hauling / Water Service**

**Double Ott Trucking**

Log Hauling & Water Service  
3800 gallon water tender  
with rear spreader & 3" pump

Kvande Andison  
Condon, MT 754-3063  
Cell 253-5726

**Woodworking / Wood Floors / Decks**

**MARTY'S WOODWORKING**

Wood Floors our Specialty  
Maintenance and Decks  
22 Years Experience

Marty Johnson (406) 360-7866

**Legal Services**

**677-3006**

**John Sytsma Attorney**

- Real Estate • Land Development
- Divorce/Support/Custody
- Wills/Trusts/Probate
- Accidents/Personal Injury

Corner Hwy 83 & Locust Lane  
P.O. Box 504  
Seelye Lake, MT 59868

**Electrical Contractor**

**Seeley Electric LLC**

**William J. 'Bill' Yiangst**  
Master Electrician

Office Ph: (406) 677-3020  
Cell Ph: (406) 239-3279

United We Stand

Email: SeeleyElectric@TheElectriciansGuild.com  
P.O. Box 306 Seelye Lake, MT 59868

**Resort Lodging**

**800-900-9016**  
**406 677-2376**

**The Lodges**  
at Seelye Lake

**Brian & Kerry**

P.O. Box 568 • Seelye Lake • MT 59868  
www.lodgesonseelyelake.com

**Contractor • Builder**

**WILL KATS**

**CONSTRUCTION LLC**

Residential Carpentry  
Established 1980!

Montana Registration Number: 20064

6380 Woodworth Road • Greenough, MT 59836  
**(406) 677-3068**

**Contractor • Builder**

**ADAMS CONSTRUCTION INC.**

Custom Homes Log or Frame  
Additions & Remodels

PH: 406 677-3029 P.O. Box 10  
Fax: 406 677-0033 280 Eagle Drive  
Mobile: 406 239-3125 Seelye Lake, MT

**Excavating**

**GARY LEWIS**  
OWNER

406-677-2823  
406-677-4072  
Fax  
406-677-3018

**DEER CREEK EXCAVATING, LLC**

P.O. Box 523 • Seelye Lake, MT 59868

**Chimney Cleaning**

**BUCK CREEK CHIMNEY SWEEPS**

**LONNIE CASEBOLT 754-2726**

email: buckcreek@blackfoot.net

**Natural Health Products**

**SPIRIT MOUNTAIN HEALTH PRODUCTS**

TWIN LAB • NATURE'S HERBS • POWERTHIN • BIO CLEANSE  
AROMATHERAPY • BATH & BEAUTY PRODUCTS

LEON & KRIS MARTIN HWY. 83  
P.O. BOX 1124  
CELL PH 1-406-210-1344 SEELEY LAKE, MT 59868

**Auto Body Shop**

**SEELEY LAKE AUTO BODY**

Collision Repairs  
Painting  
Autoglass

Recreational Vehicles  
Snowmobile Hood Repair  
Insurance Approved

**Randy Reinitz 677-5010**

146 Larch Lane S. • P.O. Box 347 • Seelye Lake, MT 59868

**Photography**

**Rhonda Malecha**

**PHOTOGRAPHY**

Reasonable Rates

Weddings, Graduation, Family, Special Events, Studio & Outdoor Settings

**(406) 677-3176**

# CLASSIFIEDS

## Notices

Frito Bandito says, "Hey Gringos, these drama kids at the high school are cooking up burritos so they can make pesos for their acteen productions dramatico. These is at 11:30 am at the high school in the cafeteria of the Reech Activity Center. When your tummy is buzzing with the heat of chilies, hear the wild Latin beat of a very beeg jazz band. Saturday, Jan. 25th. Hey, I deeden't know you Northerners had so much pa.sion."

## For Rent

8x16 trailer, 8' ramp, used for snowmobiles, rafts, ATVs, golf carts, small tractor or equipment, \$750, 677-2040

Mini storage units available. 98 units to serve your needs. Clearwater Mini Storage, LLC, 677-3000

Lone Larch Mini-Storage-located on Spruce Drive. Easy access in Seelye Lake, 677-2889 or 677-4133

2 BR, 1 BA home, 10 acres, mountain views, privacy, in Condon, \$600/mo + utilities. Outside pets only. 707-481-9397, leave message

3 BR 1 bath house, garage, fenced yard, newly remodeled, 1st & last months' rent + deposit, \$595/mo, 677-2733 or 677-3733

## Help Wanted

Part time cook position, year round. Inquire at Lindey's after 5 pm.

## For Sale

Firewood, solid Doug fir, split & delivered, \$95/cord, 677-3142

Firewood, split & delivered, \$85/cord, 677-3564

'89 Ford F250 flatbed with 1 yd. bin sander, cab controlled, \$5,000, 677-2823 or 677-4072

'93 Olds-Cutlass Sierra, 4 door, V6, full power, 26 mpg, good body, lots of miles, \$800 OBO, 677-0120

center, High School.

Will pawn, buy or auction most anything. Give me a call, Riley, 677-2997.

**Auto Body & Paint & Glass**  
Approved by insurance companies. Call Sam Bolton, 677-2969 for estimates & information.

**B & B Construction:** New construction, remodeling & repairs, 677-3564

Rod Stevens Construction, contractor/builder. New homes, additions, bathrooms & kitchens, remodels, 677-4021

Are you bored? Tired of being a couch potato. Do TV and videos not have the punch they used to? Try a live performance! Put spice in your life...Salsa! 2 Valleys Stage presents Cocinando, Saturday, Jan. 25th, C.B. and Helen Rich Activity Center, High School: 12:30 (lunch!)

The Pathfinder office is located in the Lazy Pine Mall, Highway 83, Suite E-2. Open Monday & Friday, 12-5, Tuesday, 12-3. NOTE: Latest deadline for ads, articles, etc. is 4:00 p.m. on Mondays.

**Services**

**677-9229 NOW OPEN YEAR 'ROUND**

**Lindey's**  
DINNERS FROM 11:30 AM - 10:00 PM

**"THE PLACE FOR STEAK"**  
"OPEN 5 DAYS A WEEK"  
Thursday • Friday • Saturday • Sunday • Monday

# STATE WIDE Classified Ad Network

The Pathfinder now offers you a one-step, inexpensive way to place advertising messages in 55 participating weekly and semi-weekly and 7 daily newspapers in Montana. The service offers you a circulation of 206,000 households (494,400 readers) for a low price of \$119 for a 25-word ad. Call 677-2022 for details.

**BUSINESS OPPORTUNITY**  
**BEYOND OWN BOSS**...Control hours! Increase income! Full training, FREE info. Call or visit: 1-888-389-7529. www.perfectyou2.com. #041

**EDUCATION INSTRUCTION**  
**TRUCK DRIVER TRAINING.** Complete programs and refresher courses, rent equipment for CDL, Job Placement Assistance. Financial assistance for qualified students. SAGE Technical Services. Billings, 1-800-545-4546. #042

**FINANCIAL SERVICES**  
**CASH FOR THE PURCHASE OF MORTGAGES,** contracts, notes, settlements, annuities, escrows. Fast, professional service. Compare our prices! Creative Finance, Missoula, Montana's oldest!! 1-800-999-4809. www.creative-finance.com. #043

**FOR SALE**  
**HIGH QUALITY-LOW PRICES.** WOLFF TANNING BEDS. Payments from \$25/month. Home delivery. FREE Color Catalog. Call Today 1-888-839-5160. #044

**LITTLE BITTERROOT RANCH** Production Sale.

Selling 41 bulls, 30 females Simmental & Red Angus. Solid Black/Red. Trucking/feeding available. 406-741-2523. Missoula Livestock, Feb. 6th, 1pm. #045

**1997 FORD DIESEL,** power stroke 4x4, 3/4 ton pickup. Like new. Extras. 30k miles. Must see to appreciate. Will consider offers. 406-575-4435. #046

**HELP WANTED**  
**DRIVERS...SWIFT TRANSPORTATION** is hiring experienced and inexperienced drivers and o.o. CDL Training available. We pay for experience, great benefits, tuition reimbursement. 1-866-222-6646. (toll-free) #047

**EXPERIENCED OWNER OPERATORS!** 1-888-245-1773. Call us today! \*You get miles. \*You get paid. \*You get HOME. Professional Drivers! 1-888-245-5977. Blitteroot International Systems, LTD., Missoula, Montana. #048

**AVON Entrepreneur** wanted. Must be willing to work whenever you want, be your boss, and enjoy unlimited earnings. Let's talk. 888-942-4053. #049

**HYDRAULIC/ELECTRICAL EQUIPMENT ASSEMBLER.** Assembles hydraulic components on equipment, using hand tools and/or power tools. Connects electrical wiring according to circuit diagrams. Strong mechanical background and welding experience a plus. Other duties as required. Valid driver's license required. Benefits package available. Wages DOE. Reply to: Manufacturing, SRS Crisafulli, Inc., P.O. Box 1051, Glendive, MT 59330, or Fax to: 406-365-8088. www.crisafulli.com. #050

**REAL ESTATE**  
**BEAUTIFUL TEXAS LAND!** 20 acres, 25 miles from booming El Paso. Roads, surveyed, references. \$9,995, \$0 down, \$99/monthly. Money back guarantee. No qualifying. 1-800-843-7537. www.sunsetranches.com. #051

**WANTED**  
**BEAUTIFUL OLD NAVAJO RUGS;** Indian beadwork on bags, gloves, clothing; Metal artifact; Rustic cabin furniture; Angora chaps, paying \$1000+; Prison horsehair bridles, 1800s. Anytime 1-800-962-2427. #052

**Glen's Automotive Service**

677-2141

**WINTER SPECIAL**  
Get an oil change priced in honor of the year we opened!!!

**Lube, Oil & Filter**

**\$19.85**  
Includes Filter & 5 qts oil.

Bring in this ad for \$15.00 off a Tune-Up!

**ASE** APPROVED  
**QUAKER STATE** OIL  
**Havoline**

**KaPpa Technology**

406.677.0440

- Computer Repairs
- Computer Set-up
- Computer Upgrades
- Networking Solutions and Analysis
- Network Troubleshooting and Repair
- Network Upgrades
- Software Upgrades
- Peripheral Repairs and Upgrades
- Business/Residential PC and Mac

OVER 27 YEARS EXPERIENCE IN THE COMPUTER INDUSTRY  
FRANK MARADEO OWNER

Please support the Seelye Lake Fire Department and the SSTEP program

**CENEX Energy Partners**

**CHARLIE HAHN**  
Branch Manager  
Propane Installation & Service

Hwy 83 North • Seelye Lake, Montana 59868

Office (406) 677-3656 • Cell (406) 677-4185 • Fax (406) 677-3657

# WOLD'S VALLEY MARKET

Locally owned  
& operated

One Mile South of Seeley Lake  
on Scenic 83

A member of Associated Food Stores, Inc.

SEELEY LAKE, MONTANA



Open 7 Days A Week!

Sunday thru Thursday — 7 a.m. to 9 p.m.  
Friday & Saturday — 7 a.m. to 10 p.m.

406/677-2121

WE ARE MEMBERS OF



SEE INSERT SPECIALS

Effective January 22, 2002 - January 28, 2003 • POSTAGE STAMPS • ATM MACHINE

## The ESPRESSO BOOTH

Easy Access from Whitetail Drive  
NOTE HOURS

New Winter Booth hours Starting Jan. 5

Sunday & Saturday 7 a.m. to 1:00 p.m.

Monday thru Friday 7 a.m. to 2:00 p.m.



## Lunch is Ready ...

Lunch Menu for this week...1/23 - 1/29

Thursday: "Bagelwich" Day - Bagel sandwiches ordered in the booth, save .25

Friday: "Lynn Dee's Luscious" Lasagna Soup, zesty & filling!

Saturday & Sunday: No soup but we have sandwiches

Monday: "Geez Louise" It's Wisconsin Cheese Soup; smoky, creamy flavor

Tuesday: "Tremendous Tato Day" — Baked Potato with your choice of toppings

Wednesday: "Cousin Polly's" Cream of Broccoli Soup; comfort food!

~ 11 a.m. - 1:30 p.m., 12 oz. bowl with roll - \$2.50

Baked Potatoes \$2.00

\*Weight Watcher points available for soups and coffee drinks in the booth!

## YMCA News Update on Activities

Come and Join the FUN!

Adult Fitness Classes: Walk Fit and Step are being offered through the YMCA. Morning programs consist of the walking program or step class, you choose! We are also offering an evening step class.

Classes are held Monday, Wednesday and Friday in the Multi-Purpose Room at Seeley Lake Elementary School. Morning class is from 8:15 to 9:15 AM. Evening class is 5:15 to 6:15 PM.

Walk-Fit is \$15.00 per month and Step is \$25.00 per month for morning or evening classes.

COME AND JOIN US! PAY FOR THE MONTH OF FEBRUARY AND COME IN MARCH FOR 1/2 PRICE!!!

Any questions please call the Seeley-Swan YMCA Outreach office at 677-3330.

YMCA Basketball Programs Will Begin in February

Blitty Ball (1st & 2nd grade boys and girls) will begin Saturday, February 8 through March 29 in the Seeley Lake Elementary School Gym from 10:00 to 11:00 a.m. The registration fee is \$20.00. Scholarships and family discounts are available.

3rd & 4th Grade Basketball will begin February 5 through March 26; time and place to be determined. The registration fee is \$20.00 (family discounts and scholarships are available).

Registration forms will be sent home with students. Home Schoolers please call 677-3330 and forms can be sent to you.

Special of the Week

## "Butternut Latte"

The smooth and distinctive flavors of Butterscotch & Hazelnut are combined with freshly steamed milk and espresso for a taste sensation you will enjoy!

Save .25 cents on any size this week!

## "FYI"

It was a locksmith who, in 1665, first invented a coffee mill in London.

## The Wine Rack

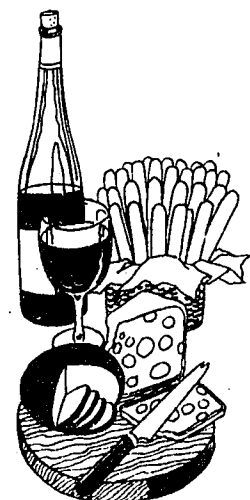
### A Spectrum of Wine

Fetzer "Echo Ridge"

Gewurztraminer

The most unique wine produced by Fetzer with delicate aromas and flavors of peach, pineapple, jasmine & ginger, it is slightly spicy with superb balance & a clean fresh fruit finish.

Serve it with Asian or Latin dishes, baked ham, turkey, fresh seasonal fruits & salads or enjoy casually sipping by itself.



on sale for \$6.49 regularly \$8.59

for .750 ml bottles for the Month of August

We Welcome everyone for Winterfest...hope you enjoy yourselves in our beautiful haven.