

27 elk calves radio collared in Garnett study

Ranger District Campfire Programs

<http://www.seeleyswanpathfinder.com>

Seeley
Swan

PATHFINDER



Vol XVII, No. 7

"Voices from the Valley"

Thursday, June 13, 2002

Summer
Getting
closer!



G. Nolan photo

smallpathfinder@montana.com

Montana Historical Society Library
1500 N. 10th St.
Helena, MT 59601-4501



GARY NOLAND, EDITOR **PUBLISHER'S NOTICE** **MILLIE NOLAND, ADVERTISING**
 Seeley Swan Pathfinder (ISSN 0894-2994, USPS 000-919) is published weekly by Pathfinder Press, Inc., Box 702, Seeley Lake, MT 59868 (ph. 406/677-2022). Area served is Seeley Lake, Swan Valley and neighboring communities. Distribution is by mail subscription (\$20 per year in Missoula, Lake or Powell County; \$25 per year elsewhere in U.S.) and by newsstand sales. Periodicals postage paid at Seeley Lake, MT. Postmaster: Send address changes to: Seeley Swan Pathfinder, P.O. Box 702, Seeley Lake, MT 59868-0702.

COMMUNITY CALENDAR

Community members are invited to submit dates, times and locations of events, meetings and other happenings. Submission deadline: Friday, 5 p.m.; call 677-2022

PUBLIC MEETINGS
 S.L. Chamber, 2nd Thur, 7am, Filling Station
 S.L. QRU, 2nd Thur, 7pm, fire hall
 American Legion, 2nd Fri, 7pm, Swan Valley Comm. Hall
 S.L. Comm. Council, 3rd Mon, 7pm, fire hall
 Arthritis Support Group, 3rd Tues, 1:30pm, Senior Ctr.

WEEKLY MEETINGS:
Alcoholics Anonymous: (help for those with a suspected drinking problem) -Condon: Faith Lutheran Church, every Sunday, 1pm
 -Seeley Lake: Every Wed, 7pm, Living Water Catholic Church, on SOS Rd. For info: 677-3271 or 677-2892.
 *Potomac: 406-244-5204
Alateen: (help for teenagers of alcoholic families) Hotline 677-2753
Overeaters Anonymous: every Thursday, 7pm, Faith Lutheran Church, Condon, 754-2371

Missoula County Commissioners Public Mtg, every Wed, Courthouse Annex, Room 201, Missoula, 1:30 pm.
 T.O.P.S. Mtg, every Thurs, Mission Bible Fellowship bldg., Seeley Lake, 10am.
MONTHLY SERVICES
 FAIM Outreach Specialist, 1st & 3rd Thur, 9:30-3, Seeley-Swan Med. Ctr.
 Pinoche, every 1st & 3rd Sat., Senior Citizens Center, 7 pm
Arthritis Support Group meets monthly on 3rd Tuesday, 1:30 pm Senior Center.
DUMPSTER TRANSFER SITE: Summer hours (May-Sept) - Wed, Sat & Sun, 9am-5pm, 677-3809
SSTEP Crisis Help Line: 677-3177. Domestic violence, sexual assault, child abuse, community outreach & education
Food Bank: Tues, 12-4 pm, next to Multi-purpose Room, S.L. Elementary, 677-5025

Loving Hearts Thrift Store: Open Wed, 12:00-5:00, Sat, 11-3, 677-5683 (emergency 677-2110)
Seeley Lake Community Hall: For hall rental, call Cheri Thompson, 677-2454
LIBRARIES:
 Seeley Lake Public Library (Seeley-Swan High School) Summer hours: Wed., 3-8pm; Thursday, 10am-3pm.
 Swan Valley Library (Condon) Tues, 11am-4pm; Wed, 11am-7pm; Fri, 11am-4pm
Family History Ctr.-LDS Church: Open Wed, 11am-3pm. Call 677-2642 or 677-2575.
EMERGENCY: Dial 911 if you live in Seeley Lake, Condon, Greenough or Ovando.
Swan Lake Residents: 886-2324 (Fire, QRU or Search & Rescue) or 1-406-752-6161 for Sheriff, Highway Patrol.

Editorial Comment

Chips . . . bits & pieces

Only a small handful of interested residents turned out for the first meeting on a new draft document called the Seeley Lake Community Planning Guide, but more meetings are planned to review the draft this summer. By the time the Community Council is ready to approve it in final form and submit it to the county commissioners for approval, many people will have examined it and provided input that will be reflected in the final document.

Karen Lyncoln, herself a city planner for 25 years, has helped the council over the past few years in an effort to amend an original document called the Comprehensive Community Plan adopted in 1989. That document was 80 pages in length. The new document is focused more on goals, and not the means, and has been reduced to 20 pages. That in itself is a major accomplishment.

We'll have more on the plan over the summer. Watch for meeting announcements. The document has no force of law, but when approved by the county commissioners, it may be used as a guide in their decisions regarding land use development in the Seeley Lake area.

Seeley Swan voters sided with the majority in county and state races in last week's low turn-out primary, with one notable exception (see tabulated results inside). Only six of the 78 Missoula county precincts rejected the levy request by the Historical Museum at Fort Missoula, and Seeley Lake and Condon accounted for two of those six precincts, even though the area stands to benefit from grants promised by the Fort Missoula Museum which will now have over \$30,000 a year to give for rural historical preservation efforts outside of Missoula, such as the Old Barn History Museum and Visitor Center at the south entrance to Seeley Lake. Museum directors are probably still puzzled over that vote.

—Gary Noland

Work at Home Opportunity scams

ASK THE AUDITOR
 MONTANA INSURANCE AND SECURITIES COMMISSIONER
 JOHN MORRISON

Q: I have been contacted several times by people offering "work-at-home" opportunities and am surprised by how much money they say I can make. Are these jobs for real?

A: People are more likely to go broke quick than "get rich quick" with many of the get-rich-quick self-employment opportunities being offered today. That unfortunate truth generally is learned too late by the thousands of people who fall victim every year to swindlers peddling a variety of moneymaking scams.

Promises of a sure path to financial independence offered by work-at-home scams; pyramid schemes that assure income in return for an initial and sometimes recurring investment; along with a variety of other phony business opportunities and franchises, are among the most prevalent tactics con artists use to prey upon those needing or wanting supplemental income.

Con artists often find their victims through the Internet, telephone solicitations, trade shows, and television, radio and print advertisements. They typically tell the prospective participant that public interest is high, but the window of opportunity soon will close. Promoters pressure investors to make a quick decision and hand over their money.

Get-rich-quick and self-employment scams often promise exclusive territories and money-back guarantees. Many victims are assured that they will receive marketing assistance and that income is guaranteed to exceed the cost of buying into the program. After they have paid, too often investors learn that any training they have received is useless, the equipment or software necessary to conduct their business does not work, supposedly secure leads procure no business, there is no 24-hour assistance hotline and guarantees are nothing but words.

If an organization offers to pay you commissions for recruiting new distributors, beware. Montana law prevents this practice, called "pyramiding." The law says a multi-level marketing plan may only pay commissions for retail sales of goods or services, not for recruiting new distributors. Many victims of these scams first sell to their friends and family. Plans that pay commissions for recruiting new distributors inevitably collapse when no new distributors can be recruited.

When the supposed moneymaking opportunity collapses, most participants lose not only their money, but also their friends. The unfortunate fact is that 92 percent of pyramid scheme participants lose all their money.

A business opportunity may sound appealing, especially if you have limited resources or business experience. However, you could lose a significant amount of money if you don't investigate a business carefully before you buy. Before you invest in any business venture, take the following steps to protect yourself:

- Check out any multi-level marketing company with the Montana Securities Department in the State Auditor's Office at 1-800-332-6148. To see if Montana-based companies offering other business opportunities are registered, check with the Montana Secretary of State's office at 1-888-884-8683.
- Ask current owners or employees about their experiences with the company. Don't accept a list of references selected by the company as a substitute for a complete list of franchise or business opportunity owners.
- Get all promises in writing.
- Ask for the details of the company's refund policy before you buy. Get that in writing, too.
- Listen carefully to sales presentations. Be wary of any opportunity that sounds too easy. The thought of easy money may be appealing, but success generally requires hard work.
- Be wary of buying if company representatives try to evade your questions or ignore them altogether.
- Ask for the disclosure document if you are investing in a franchise. This document, required by law, should provide detailed information to help you compare one business to another. If the company has no disclosure document, don't invest.
- Ask a lawyer, accountant or business adviser to read any disclosure documents and proposed contracts. Entering into any business opportunity generally requires a substantial investment.
- Resist high-pressure sales tactics. Buying a business opportunity is a big, expensive decision. Take time to think it over.

For more information on business or investment opportunities, call the Securities Department in the Montana State Auditor's Office at 1-800-332-6148 or visit our Web site at www.discoveringmontana.com/sao.

Quite a few people involved

Dear Gary:

Thank you so much for your kind comments in "Chips" and the wonderful coverage you have been giving 2 Valleys Stage and Alpine Artisans, Inc., in the Pathfinder.

However, when you state, "Rolly Meinholtz, who along with his wife, Peggy, are heading up efforts to underwrite the 2 Valleys Stage Performing Arts series . . ." as a statement, we are veering just far enough from the truth of the matter that I must offer a correction.

As has been stated elsewhere, the spark of the wonderful idea that has become 2 Valleys Stage, was that of the teaching staff at Swan Valley School then put into practice by music teacher, Bob Green. Since I have been directing and producing public events all my life, I saw the potential of what they were already doing and offered my perception and expertise to Alpine Artisans, Inc., who seemed to me to be the ideal group in our valleys to really give this project wings.

Alpine Artisans, Inc., under the adroit leadership of President Joyce Bissell, took the challenge, magnificently, both with very generous seed money and a lot of just plain old labor and donation of free time to get 2 Valleys on its feet.

Bob Green has continued his dedication to the project by becoming my assistant Artistic Director. By my unofficial count, there were well over twenty people who were directly involved in making A Grand Celebration a triumph and that does not include the eight artists, who were so enthused about what we wanted to do up here that they came at the highly reduced rates that we could afford!

Special mention should go to

Bill Hyde, whose very generous gift, made it possible for us to pay even the reduced rates without endangering monies we had already raised for the official season beginning next Fall.

Speaking of Bill leads right into the powerful support our valleys' three schools have provided and are providing 2 Valleys. Teachers at the high school, not only hugely assisted with physical arrangements for the event, but amazingly got together and staged a delicious light supper for the artists and the Alpine Artisans most directly involved with the series. A teacher from Seeley Elementary created the reception for audience at intermission and artists after the event.

Businesses here in Seeley and Condon have become excited about our series and are supporting us in many ways, sponsoring whole events, such as Clearwater Realty, individual workshops being done in our schools, or providing in kind services such as the Emily A and The Hungry Bear have in providing food and lodging for our visiting artists.

In other words, our whole communities . . . our two valleys . . . have embraced this series project and that's why we have been able to start with such a wonderful bang. No two persons by themselves, no matter how talented or

effective, could have achieved so much . . . working alone! Thank you helpers, Alpine Artisans, and esp. thank you Seeley and Condon! What lies ahead for 2 Valleys Stage looks very exciting!!

Gratefully,
 Rolly Meinholtz,
 Seeley Lake, Montana

Loon chicks born on Placid

We are pleased to announce, that two baby loon chicks were first sighted today, Monday, June 10, 2002, at 2:30 p.m. MDT on Placid Lake.

They both have been seen riding on the mother's back and they both have been seen swimming while mom and dad dove for food.

Right now, 4:00 p.m., one is on the back, the other we think is under the mother's wing. We figure dad has gone fishing! So far, so good. Now pray that the eagles stay away and that both chicks remain healthy!!

Carl & Sharon Kreitzberg
 Placid Lake
 P.S. It's quite an anxious role—being loon foster grandparents!

THANKS FOR YOUR SUPPORT

Securing one additional mill for the Seeley Lake District Cemetery assures a stable future operation as well as possibilities for further improvements. A majority vote made this a reality and invests tax money close to home in order to meet needs of people during critical times. Sincere thanks from the volunteer Cemetery Board.

1-800-800-4260
677-3337

GREAT BEAR PROPERTIES

LAZY PINE MALL HIGHWAY 83 South End of Town
 P.O. Box 569 • Seeley Lake Mt 59868
 FAX 406/677-3060

Rumble Creek Runs Through It
 This frame home has 3 bedrooms, 2 baths and features open concept living. The main floor, in addition to the living room, dining room and kitchen, offers a master suite and sunroom suitable for indoor gardening or a hot tub. The two-car attached garage is accessed through a mud room next to the main entry. The upstairs has two bedrooms, one with a skylight, and a full bath. Some fencing is in place for horses. The entire 5 acres has been "parked out" and seeded. This home is immaculate. Asking \$159,900.

CHARACTER AND CHARM!
 Conveniently located on a town lot at the end of a quiet road. Very well kept 3 bedroom, 2 bath, two level home, close to schools, shopping and recreation. On the lower level are the kitchen, one bedroom and bath and the open living/dining area with sliding glass doors out to the new deck! Upstairs is the master bedroom, another bath and bedroom plus a nice sized bonus room over the attached 2 car garage. Over 1400+ sq. ft. of living space. \$119,900.

State Lease Cabin
 On 2.091 acres on Highway 83 south of Seeley Lake. Approximately 1,100 sq. ft. 2 bedroom, 1 bath, kitchen, living room. New wiring, new insulation, some new sheetrock. Kitchen has been reassembled. One bedroom newly sheetrocked. Live in this, one while doing the last of the fix-ups. Older garage. Owner will carry contract. \$24,900.

Double Arrow Ranch
 Phase 6, lot 25. Beautiful 2.06 acres, end of cul-de-sac, next to common area and close to Trail Creek. Prime lot. \$24,900.

This SATURDAY ONLY!

(While Supplies Last!)

BLOW OUT PRICES FOR FATHER'S DAY!

15 CD Holder
 Regular Price 16.99
SATURDAY ONLY \$7.30-3622
3.99

Lockback Knife Set
 Regular Price 9.99
SATURDAY ONLY #999-5218
3.99

169 Pc. Tool Set w/Case
 Regular Price 39.35
SATURDAY ONLY #999-3049
17.99

WAPA AUTO PARTS

SEELEY LAKE AUTO PARTS

3180 North Hwy 83
 Seeley Lake, MT 677-2454

WE KEEP AMERICA RUNNING.

The World's Gateway to the Seeley Swan

Charles Parker, Broker
 Elinor Williamson Ellic Greenough
 Kim Koppen

LOCATED on Hwy 83, Lazy Pine Mall on the Pond
greatbearproperties.com - email: info@greatbearproperties.com

Garnets elk study boasts 27 radioed elk calves

by Mike Thompson

Jarod Raitel is a pretty popular guy in Fish, Wildlife & Parks circles right now.

And, why not? He just completed what we began to believe was Mission Impossible—the capturing and radio collaring of 25 newborn elk calves in the Garnet Mountains. He even added 2 extra for good measure. Of course, he had a lot of skilled and enthusiastic help, but Jarod gets credit for putting together the team of volunteers and professionals, and directing the project to its first critical milestone of success.

Faithful readers were introduced to Jarod last week in this column. He is the graduate student from The University of Montana who is conducting the new elk

calf mortality study in the Garnets, a companion effort to the Garnets Lion Study. Funding is provided by Montana Fish, Wildlife & Parks (FWP), The University of Montana, the Rocky Mountain Elk Foundation, U.S. Bureau of Land Management and the Northern Rockies Research Station.

Besides funding, FWP also provided the question. What is the cause of declining calf:cow ratios in the early winter and early spring surveys of elk populations in the Garnets and across much of west-central Montana?

We had already provided evidence that the problem does not occur during the rut. Last February, we collected blood from 28 adult cows in the Garnets and discovered that 27 were pregnant. So, Jarod's work focuses on mortality



between the ages of 1 day and 1 year.

How well did the calf capture operation go?

It went so well that another researcher who is working on a songbird study in the Blackfoot this summer happened upon a newborn calf during the course of her work, without even trying. She flagged down Jarod's field crew on the Ovando-Helmville Road and was able to direct them to the site for yet another successful capture.

It went so well that John Vore, an FWP wildlife biologist from Hamilton, was able to strike out on his own one morning and radio-collar a calf along lower Pearson Creek single-handedly. John had the advantage of experience, having captured a few calves for previous research in the densely forested South Fork of the Flathead drainage.

It went so well that even slow, fat guys helped capture elk. Admittedly, it required a helicopter to carry me from place to place, an old military Jet Ranger that made me think of a flying Dodge Power Wagon. We used the helicopter to locate cow elk in country that was a little too difficult for the ground crews to work efficiently. Once a cow was observed the helicopter would "push" it a bit to see whether it would run away or stand its ground. If the cow was reluctant to leave, we assumed it had a newborn calf hidden nearby. Then we commenced a low, slow, aerial search of the sagebrush, juniper

and aspen patches until we became discouraged or a reddish-brown, white-spotted calf was discovered. When we saw a calf, the pilot would deposit the two-person field crew on the ground about 200 yards away and then hover the helicopter over the calf to distract it during our stalking approach.

One final pounce resulted in a successful capture most of the time. Then the helicopter was used to discourage the cow from approaching too closely for the 5 minutes it took to place the small, expandable radio collar around the neck of the calf, obtain a weight, estimate an age (in days) and take a few physical measurements. The four calves that I handled each weighed about 40 pounds and were about 3-5 days old. Jarod will give us a more complete rundown of the capture statistics when he gets time to exhale.

Now, all of you know that FWP strongly discourages you from handling the newborn calves and fawns that you might be lucky enough to observe in the wild, or in your backyards. So, why is it OK for FWP to do it? There is a risk that cows might abandon calves that are handled by humans, but we took precautions. We wore vinyl gloves when holding the calves to limit the transfer of scent from human skin. We worked as quickly as possible, and most importantly, we left the calves precisely where we found them.

Our efforts were rewarded with occasional visual confirmations of calves reuniting with their mothers, and with the documented survival of almost all of the radioed calves through the 12-day period of intensive calf capturing (May 26-June 6). Still, it's too early to tell for sure if there will be any mortalities that could be attributed to our handling.

Rewarding as it may be, the calf capture is only part of the story, and only one of Jarod's primary responsibilities. Another critical component is to document any deaths, and to determine cause of death.

Determining cause of death for newborn calves is particularly difficult. They are hardly more than a mouthful for black bears, the species that other researchers have found to be the principal predator on calves in June. We saw a few black bears during the course of the calf capture operation, as well as coyotes and golden eagles. In fact, one cow elk attracted our attention and caused us to search for her calf

when we spied her chasing a coyote over hill and dale.

The only hope for determining cause of death is for Jarod to find any dead calves as soon as possible. So, the radio transmitters are equipped with "mortality switches" that emit a distinctive signal when the collar hasn't moved for 4 hours. Jarod listens for the radio signal from every deployed calf collar at least twice a day, and then visits the site immediately upon hearing the mortality signal.

We'll ask Jarod to report directly to you in a future column after he gathers more information on calf mortalities over the summer.

With only a couple of weeks of study behind us, we've already learned volumes about the calving ecology of a local elk population. And, it wouldn't be possible without the exceptional cooperation and support of landowners who have allowed us access to their properties and offered hot tips on where to find newborn calves. We thank you all.

DUMP CABLE FREE DISH!!

Get A FREE DISH Network Digital Satellite TV System & FREE Basic Professional Installation (Value starts at \$298.00). Just subscribe to America's Top 50

OVER 60 FANTASTIC CHANNELS! JUST \$22.99 mo.

Includes: ESPN, ESPN2, Cartoon Network, Disney, Lifetime, Nickelodeon, CNN, A&E, Comedy, TBS, Sci-Fi, TNN, TNT, USA, Discovery, History, Food Network, TLC, CMT, MTV, and many more.

Valid major credit card and 12-month commitment required. Product for promotion may be existing, remanufactured or discontinued system based on availability.

EAGLE Satellite
Serving All Montana
(406) 721-3662
or (888) 565-6067

Offer ends 6/30/02. In new, low-time coverage only. All systems, components and accessories are subject to change without notice. Service limited to cable service on hand. No cash checks, local and state sales taxes may apply. All DISH Network programming and any other services that are provided are subject to the terms and conditions of the Receiver/Cable Agreement, which is available upon request. Specific restrictions apply to DISH Network as a hardware and programming availability, and to all offers. See your DISH Network retailer, DISH Network product literature or the DISH Network Website at www.dishnetwork.com for complete details and restrictions. All service marks and trademarks belong to their respective owners.

Campfire Programs

"Our Amazing Wildlife"

Join USFS Wildlife Biologist, Scott Tomson, and learn how the changing forests contribute to our amazing wildlife diversity. Meet at Big Larch Campground Interpretive Area @ Friday, June 14 @ 7:30 PM.

"Meet the Musher"

Join musher, Kim Grover, and discover the world of dog sled racing. Kim will show us her sled, one of her dogs, and the equipment she uses in this adventurous winter sport. Meet at Seeley Lake Campground Day Use Area @ Wednesday, June 19 @ 7:30 PM.

"Why are Birds Banded?"

Join Researchers, Ty and Kristina Smucker, and learn about the mist netting and bird banding research on Seeley Lake. Join them the next morning to participate in the banding! Meet at Big Larch Campground Interpretive Area @ Friday, June 21 @ 7:30 PM.

Bring a lawnchair for comfort and marshmallows for roasting over the fire after the program.

If it rains, meet at the Seeley Creek Trailhead Shelter (just N of town, turn E on Morrell Creek Road, and drive 1 mile).

For more information, or for a brochure of upcoming programs, contact the Seeley Lake Ranger District at 677-2233.

Bowers earns technology degree

Cambridge, MA- Lesley University is pleased to announce that Linda Bowers of 312 Riverview Drive, Seeley lake MT was awarded the degree of Masters of Education in Technology in Education at the school's May 20 com-

mencement ceremony.

Mrs. Bowers graduated summa cum laude. She attended class off campus with 18 other teachers from Montana and Idaho for 22 months. Mrs. Bowers is currently employed as a teacher at Seeley Lake Elementary.

Food for Fines

Patrons who have overdue fines at the Seeley Lake Library may bring in non-perishable food items the month of June and have their fines waived. This does not apply to fines incurred for lost or damaged items. All donations will be given to the Seeley Lake Food Bank. Durring the summer, the Seeley Lake Library (located at Seeley-Swan High School) is open Wednesdays from 3p.m.-8 p.m. and Thursdays from 10 a.m.-3p.m

Lesley University (www.lesley.edu) is a 13,000-student multi-site university for women and men. Anchored by a strong liberal arts curriculum, Lesley offers under-graduate and graduate programs in education, the arts, human services, and management at its Cambridge and Boston campuses and at more than 150 sites in 17 states.

Lesley's six schools include the School of Education, the Graduate School of Arts and Social Sciences, the Adult Baccalaureate College, the School of Management, the Art Institute of Boston, and Lesley College, and undergraduate women's college.

Promote a healthy stand of trees. Reduce fire hazard. Create views. Beautification of natural woodscaping

Selective tree thinning, pruning and slash clean-up for the small homeowner acreages as well as larger properties. Specializing in low-impact methods to preserve natural terrain and native fauna. FREE ESTIMATES.

Western Land Management
CALL PAULA K. WALSH
406 677-5330

Seeley Lake Pharmacy & Floral, L.L.C.

(406)677-2424 * FAX (406)677-3333

11th Anniversary Special...

Come in & celebrate with us on Friday, June 14th & receive 11% off selected gift items including Father's Day gifts!

FATHER'S DAY IS

SUNDAY, JUNE 16TH

Many gift items and floral selections to let Dad know he's #1! Lodge decor, balloons, miniature Weber grills, made in Montana gifts, mugs & much more!!

ORDER EARLY
visit our website:seeleylakefloral.com

Village Candle Scent of the Month: "Harbor Mist"

LOWEST INTEREST RATES IN HISTORY ON STUDENT LOANS

3.5%!

AS OF JULY 1, 2002 Call the LOAN CONSOLIDATION HOTLINE at 1-800-852-2761 ext. 9750 or Log on to mhesac.org, click on Consolidation; to find out if consolidation is right for you.

2002 VARIABLE INTEREST RATES ON FEDERAL STUDENT LOANS WILL BE AT A HISTORICAL LOW.

These low rates will offer a fantastic opportunity for many borrowers to consolidate their loans and effectively lock-in these low rates with a fixed rate student loan consolidation.

SWIFTSTART BONUS FOR APPLYING BEFORE OCT. 1, 2002!

As an added incentive, MHEAC (Montana Higher Education Student Assistance Corporation), is offering a loan rebate to encourage you to keep your loans in Montana.

Log on to mhesac.org and see how much you can SAVE! (click through to Swiftstart table). Restrictions apply.

Students who borrowed loans after 1992, generally have variable rate loans which will allow them to benefit from consolidating between July 1, 2002 and June 30, 2002. Consolidating your student loans is not always the most cost effective way to handle your loan and some benefits on loans may be lost when consolidating. For borrowers who borrowed all loans after 7/1/92 and are still in grace period or delinquent, the consolidation rate would be 3.0%.

KaPra Technology
406.677.0440

- Computer Repairs
- Computer Set-up
- Computer Upgrades
- Networking Solutions and Analysis
- Network Troubleshooting and Repair
- Network Upgrades
- Software Upgrades
- Peripheral Repairs and Upgrades
- Business/Residential PC and Mac

OVER 27 YEARS EXPERIENCE IN THE COMPUTER INDUSTRY
FRANK MARADEO OWNER

Please support the Seeley Lake Fire Department and the SSTEP program

The World's Gateway to the Seeley Swan

Double Arrow Landowners

Why Haul, When We Haul?

Larson Disposal now serves all the Double Arrow Ranch with **Year-Round Garbage Service.**

Carts will be furnished with the service. Weekly or bi-weekly schedules available.

CALL FOR RATES & SCHEDULES
677-2252

Hungry Bear
Steak Seafood Pizza
Seafood Buffet
(every other week)
Starting June 14th
Dine on the Deck
(New & Different Menu)
Starting June 15
Open 7 Days a Week — Breakfast 8 a.m.
Lunch 11:30 a.m. • Dinner 5:00 p.m. • Bar Opens at 4:00 p.m.
Steak House
Swan Valley, MT • Hwy 83 MM 38-39 • 754-2240

WESTERN FUEL
PROPANE SALES, SERVICE AND INSTALLATION
3182 Hwy 83, Seeley Lake, Mt 59868

We Do More Than Sell Propane!
Complete Sales and Service • Furnaces, Ranges, Space Heaters

24-HOUR EMERGENCY SERVICE

Montana-Owned & Operated
406-677-0180 • 1-800-792-4246

Thank You

to those that joined us at our Grand Opening on June 1st!! **Winners of our drawings are:**

Oil Change:

Val Styler, Shelley Kaser, Kenny Roberts, Darlene Kaser, Haily Towe.

Balance:

Gary Miller, Bob Anderson, Greg Triepke, Dennis Lund, Kris Anderson.

Rotation:

Lindsey Matthew, Dave Pitman, Ivan Gunderson, Jeremy Stevenson, Katie Matthew.

We would also like to Thank those who sent plants and flower arrangements:

Mike, Sue & Paul Holmes, Bruce & Steph Janssen & family, Elinor Williamson, Ray Opp & Deanna Fowler, Two Rivers Bank, First Valley Bank.

Thank You to all for their support and good wishes!!!

Happy Father's Day to All!!!!

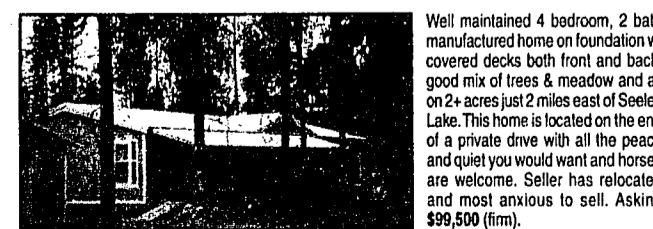
Running Bare Tire

Barry & Karen

We will be CLOSED on Sundays, June 16 & 23rd

UNIVERSAL MARTIN REALTY

Swan View Riverfront Home
Beautifully maintained 3 bedroom/2 bath approx. 1560 sq. ft. home plus full basement located on the Clearwater River with panoramic views of the Swan Mountain range. This home boasts of many things to give comfort and class. 2 wood-burning fireplaces provide atmosphere as well as heat, along with a forced air propane system and electric back-up. The full walkout basement gives access to the rolling lawn area to the river's edge. Landscaping and gardening have been a passion of the present owner and it shows. This is a home to be proud of. Asking \$229,000. Seller anxious to relocate. Will look at all offers.



Well maintained 4 bedroom, 2 bath manufactured home on foundation w/ covered decks both front and back, good mix of trees & meadow and all on 2+ acres just 2 miles east of Seeley Lake. This home is located on the end of a private drive with all the peace and quiet you would want and horses are welcome. Seller has relocated and most anxious to sell. Asking \$99,500 (firm).

B.J. Martin - Broker

Phone (406) 677-3180 Fax (406) 677-2734
e-mail: martins@montana.com

Loon & Fish Festival chalks up success

by Peggy Meinholtz

The tenth annual Loon and Fish Festival was a joint effort that paid off.

Forty one Alpine Artisans volunteered their time to put on this year's very successful festival.

The Arts and Crafts Show and Sale attracted a record thirty exhibitors and the sales topped last years big figure.

The Seeley Lake Food Bank sold over one hundred bowls filled with soup donated by local restaurants.

Raffle by Alpine Artisans and the Quilters Guild attracted many buyers as did the season ticket table for the 2 Valleys Stage premier season.

Most of the T-shirts and sweatshirts sold but there are a few more available. Call 677-3133

People from all over Western Montana came not only to buy the local art, but to learn about local wildlife and witness artists at work.

The Saturday morning bird walk by Sue Reel and Dick Hutto attracted about two dozen participants who spotted many birds.

Saturday Donna Love helped

numerous children make fish prints.

That after noon she had a crowd of kids around the picnic table in the back where Kids sculpted Playdough Loons to match the stages of growth that Donna described in her talk on Loons.

Kids who showed up Saturday morning also enjoyed a chance to try casting in an outdoor area set up by Montana Wildlife and Parks Hooked on Fishing representatives.

Niel and Dixie Meyer revved up their old time saw mill and treated onlookers to the chance to see logs become lumber the old fashioned way. Through out both days, artisans demonstrated their arts and wildlife experts shared their knowledge in talks.

One speaker was so entranced with Jon West's bird carving demonstration that he had to be reminded to give his own talk. As crowds thinned near the end of Saturday, a young man hung in there and got personal attention from Bob Korn who was demonstrating throwing pots on his wheel.

The traditionally smaller Sun-

day crowds burgeoned at raffle time.

The following were raffle winners. Dave Burningham of Helena won the quilted wall hanging by Pat Swan Smith. Murriel Grooms of Missoula won the Ultrasuede pillow by Nancy Rittel. Leslie McClintock of Missoula won the wooden bowl by Swan Woods. Lori Smithwick and Whitney Crosby of Kalispell won original water colors by Sandi Antioch. Keith Schwartz of Seeley Lake won the pottery vase by Marion Burmeister. Harley Earwicker won the food basket donated by an art supporter. Ali Watson of Seeley Lake won the Loon and Fish Festival T-shirt, Charlie Grant of Swan Lake won Colleen Nicholson's packet of photo cards. Jeanette Kopetski of Great Falls won the bark art by Alan Taylor. Barb Polus of Seeley Lake won the bark moss art by Pam Peabody. Debra White of Bozeman won the photo by Colleen Nicholson. Keith Schwartz won the food gift bag donated by an Art supporter. Whitney Crosby won the wooden heart plaque by Sue Eckstein. Elinor Williamson won the carved wooden feather pin by Jon West, 1st Valley Bank won the fabric fish bookmark by Peggy Meinholtz. Terry Bolton won the gift certificate to the Upper deck. Pam Keller of Seeley Lake won the pottery vase by Bob Korn. Murriel Grooms won pottery mugs by Bob Korn. Joy Tiner of Big Fork won the "Welcome Friends" wooden plaque donated by an arts supporter. Rooster Royale by Pattie Grant went to Scott Doyle of Seeley Lake.

Alpine Artisans would like to thank the following participants: Donna Love for children's art activities, display and Loon talk, demonstrators Neil and Dixie Meyer - old time saw mill, Bonnie Miller-Stained Glass, Nancy Rittel -Fabric Origami, Pam Peabody -doll sculpture, Jon West-bird carving, Bob Korn-pottery throwing on the wheel, Sandy Antonich-water-color painting, Cindy Torok-pencil sketching.

Special thanks for wild life walks and talks go to the Hooked on Fishing representatives - Fish Wildlife Parks, Becky White -Loon Society Table, Bruce Johnson- Forest Service information table, Jim Stone -Blackfoot Challenge talk, Lynn Kelly-evening Loon talk, Ann Dahl-Swan Ecosystem talk, and Tom Parker - Northwest Connections Also thanks to Gary Noland of the Pathfinder, and Adrian Vanderviel of Allegra Printing their special help.

Community Planning Guide gets first public discussion



Karen Lyncoln, representing the Seeley Lake Community Council, presented a draft of the new Seeley Lake Community Planning Guide, a document in the works for several years, and one produced from working with a similar, previous document, at a public meeting Monday evening. The new document is only 20 pages, in contrast to 80 pages in the old one. "We didn't want to worry about how things would happen, but only to put down what we wanted to happen," she said. After more public meetings on the plan this summer, the council hopes to finalize it and pass the guide on to Missoula County Commissioners for approval.

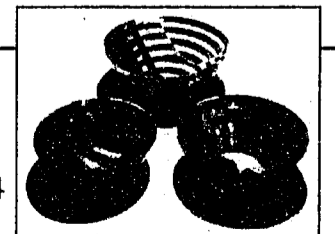
—G. Noland photo

June 4th Primary: local vote in contested races

June 4, 2002 Primary Contested Races Only	Seeley Lake	Condon
US SENATOR (Republican Ticket)		
John K. (Jack) McDonald	32	2
Mike Taylor	99	34
Melvin H. "Skip" Hanson	9	4
Bradley S. Johnson	24	9
U.S. Representative (Democratic Ticket)		
Robert Candee	44	13
Steve Kelly	78	33
Supreme Court Justice (vote one)		
Robert Eddleman	117	35
Bill Leaphart	143	44
Missoula County Sheriff (Democratic Ticket)		
Mike McMeekin	66	23
Don Morman	63	24
Dave Fowlkes	19	6
Justice of Peace Dept. 2		
R. J. Nelsen	104	28
Karen A. Orzech	168	57
Missoula Co. Historical Levy		
For	143	32
Against	184	63
Seeley Lake Cemetery Levy		
For	171	
Against	149	
Winners at the County and State levels are boldfaced.		

SwanWoods
356 Woodworth Road
Ovando · Montana 59854

Jerry · Martha Swanson
406-793-5706
800-222-6957



Handcrafted Wooden Salad Bowls and Accessories

Sheriff's Report

(911 calls compiled with the cooperation and assistance of the Sheriff's Department and Deputy Sheriff Scott Newell)

POLICE REPORT

5/13, 9:45 a.m. - Complaint - Greenough
5/13, 7:00 a.m. - Moving Violation - Seeley Lake
5/113, 2:59 p.m. - Incurable Juvenile, - Seeley Lake
5/113, 5:14 p.m. - Vicous Dog at large - Patomac
5/14, 7:35 a.m. - Assault/Hands, Feet - Condon
5/14, 8:45 a.m. - Theft of Fuel/Services - Seeley Lake
5/14, 10:16 a.m. - Harassment - Clearwater Junction
5/114, 3:47 p.m. - Harassment - Clearwater Junction
5/14, 6:40 p.m. - Follow Up Investigation - Hwy 200
5/14, 1:36 p.m. Follow Up Investigation - Clearwater Junction
5/15, 9:32 a.m. - Moving violation - Clearwater Junction
5/15,, 11:18 a.m. - Inspection - Seeley Lake
5/15, 1:08 p.m. - Follow up investigation - Seeley Lake
5/16, 7:06 p.m. Medical Response - Clearwater Junction
5/16, 9:18 p.m. - Suspicious Activity - Clearwater Junction
5/16, 4:22 p.m. - Domestic Disturbance - Patomac
5/17, 6:35 a.m. - Extra Patrol - Patomac
5/17, 9:15 a.m. - Alarm - Seeley Lake
5/17, 2:19 p.m. - Illegal Burning - Seeley Lake
5/17, 7:05 p.m. Hazard and Illegal Parking - Lake Inez
5/17, 6:02 a.m. - Disturbance - Patomac
5/18, 2:06 a.m. - Suspicious Activity - Seeley Lake
5/18, 10:42 a.m. - Follow Up Investigation - Seeley Lake
5/18, 11:00 a.m. - Theft - Big Larch, Seeley Lake
5/18, 2:57 p.m. - Theft - Big Larch, Seeley Lake
5/18, 5:39 p.m. - Criminal Mischief - Seeley Lake
5/18 6:56 p.m. - Wolf Chk, Overdue Traveler Ail - Seeley Lake
5/18 7:29 p.m. - Inspection - Seeley Lake
5/19, 7:00 p.m. - Person to be Removed - Seeley Lake
5/19, 1:09 a.m. - Extra Patrol - Big Larch - Seeley Lake
5/19, 1:58 a.m. - Disturbance -

Seeley Lake
5/19, 11:19 a.m. - Intimidation - Seeley Lake
5/19, 11:24 a.m. - Extra Patrol - Lake Alva
5/19, 3:47 p.m. - Criminal Mischief - Condon
5/19 5:25 p.m. - Alarm - Seeley Lake
5/19, 6:36 p.m. - Aggravated Assault - Seeley Lake
5/19, 6:44 p.m. - Follow Up Investigation - Seeley Lake
5/19, 6:52 p.m. - Follow Up Investigation - Condon
5/19 7:24 p.m. - Disorderly Conduct - Seeley Lake
5/19, 8:36 p.m. - Visitation Interference - Seeley Lake
5/20, 8:05 p.m. - Follow Up Investigation - Seeley Lake
5/20, 8:35 p.m. - Incurable Juvenile - Seeley Lake
5/20, 8:39 p.m. - Medical Response - Seeley Lake
5/21, 10:14 a.m. - Court Subpoena - Condon
5/21, 5:37 p.m. - Theft - Big Larch - Seeley Lake
5/21, 6:28 p.m. - Non-Criminal Incident - Seeley Lake
5/22, 8:06 p.m. - Abandoned Vehicle - Patomac
5/22, 9:13 p.m. - Structure Response - Seeley Lake
5/23, 3:29 p.m. - Suspicious Activity - Seeley Lake
5/23, 7:22 p.m. - Court Subpoena - Hwy 200
5/23, 10:16 p.m. - Bar/Building Check - Seeley Lake
5/23, 1:44 a.m. - Bar/Building Check - Seeley Lake
5/24, 0:00 - Bar/Building Check - Seeley Lake
5/24, 1:15 a.m. - Bar/Building Check - Seeley Lake
5/24, 9:38 a.m. - Inspection - Condon
5/24, 10:06 a.m. - Moving Violation - Clearwater Junction
5/24, 4:21 p.m. - Abandoned Vehicle - Seeley Lake
5/24, 4:22 p.m. - Abandoned Vehicle - Condon
5/24, 4:36 p.m. - Moving Violation - Seeley Lake
5/24, 4:56 p.m. - Abandoned Vehicle - Condon
5/24, 5:29 p.m. - Moving Violation - Salmon Lake
5/24, 5:45 p.m. - Extra Patrol - Round Up
5/24, 6:18 p.m. - Court Subpoena - Hwy 200
5/24, 7:03 p.m. - Vehicle-property Damage - Seeley Lake
5/24, 1:09 a.m. - Bar/Building Check - Seeley Lake
5/24, 1:51 a.m. - Noise, Party - Big Larch - Seeley Lake
5/24, 1:49 a.m. - Theft - Clearwater Junction
5/25, 2:03 a.m. - Other Hazard - Seeley Lake
5/25, 6:20 a.m. - Animals at Large - Clearwater Junction
5/25, 11:00 a.m. - Illegal Burning - Lubrecht Forest
5/25, 11:51 a.m. - Criminal Mischief - Seeley Lake
5/25 12:49 p.m. - Inspection - Seeley Lake
5/25, 1:21 p.m. - Moving Violation - Salmon Lake
5/25, 4:29 p.m. - Follow Up Investigation - Seeley Lake
5/25, 6:55 p.m. - Follow Up Investigation - Seeley Lake
5/25, 7:03 p.m. - Public Intoxication - Clearwater Junction
5/25, 7:26 p.m. - Missing Person - Salmon Lake
5/25, 7:47 p.m. - Disorderly Conduct - Big Larch - Seeley Lake
5/25, 8:34 p.m. - Follow Up Investigation - Big Larch - Seeley Lake
5/25, 8:53 p.m. - Disorderly Conduct - Harpers Lake - Seeley Lake
5/25, 10:12 p.m. - Follow Up Investigation - Seeley Lake
5/25, 10:30 p.m. - Message Pickup/Delivery - Seeley Lake
5/25, 9:50 a.m. - Tro Violation - Hwy 200
5/26, 1:54 p.m. - Suspicious Activity - Seeley Lake
5/26, 2:35 p.m. - Person to be Removed - Seeley Lake
5/26, 3:41 p.m. - Extra Patrol - Harpers Lake
5/26, 6:05 p.m. - Weapons/Shots Heard - Placid Lake

Public Notice

Department of Natural Resources and Conservation Timber Sale

The Montana Department of Natural Resources and Conservation, Clearwater Unit, is in the preliminary stages of preparing the Headquarters Timber Sale located in portions of the W 1/2 of section 2, N 1/2 NE 1/4 of section 10, T14N R14W, and section 36, T15N R14W. The Department would like public input regarding the proposal to harvest between an estimated 2-4 million board feet of timber, construct approximately 1-3 miles of new road and recondition up to 10 miles of existing road to access these areas. Those interested should address written comments to: Dave Marsh, Montana DNRC, Clearwater State Forest, 48455 Sperry Grade Rd., Greenough MT 59823-9635, Phone: (406) 244-5857. The comment period for this proposed project has been extended. Comments must now be received by 5:00 p.m. on June 17, 2002.

Scenes from popular 8th Grade Play



The Cast.

“Zartan the Grapeman”

Photos by
Donna Love



Parent Virginia Williams helps out painting scenery.



Joel Cahoon as a pirate and Cody Rowe as Zartan.



Laura Love and Eric Rose in Act II..

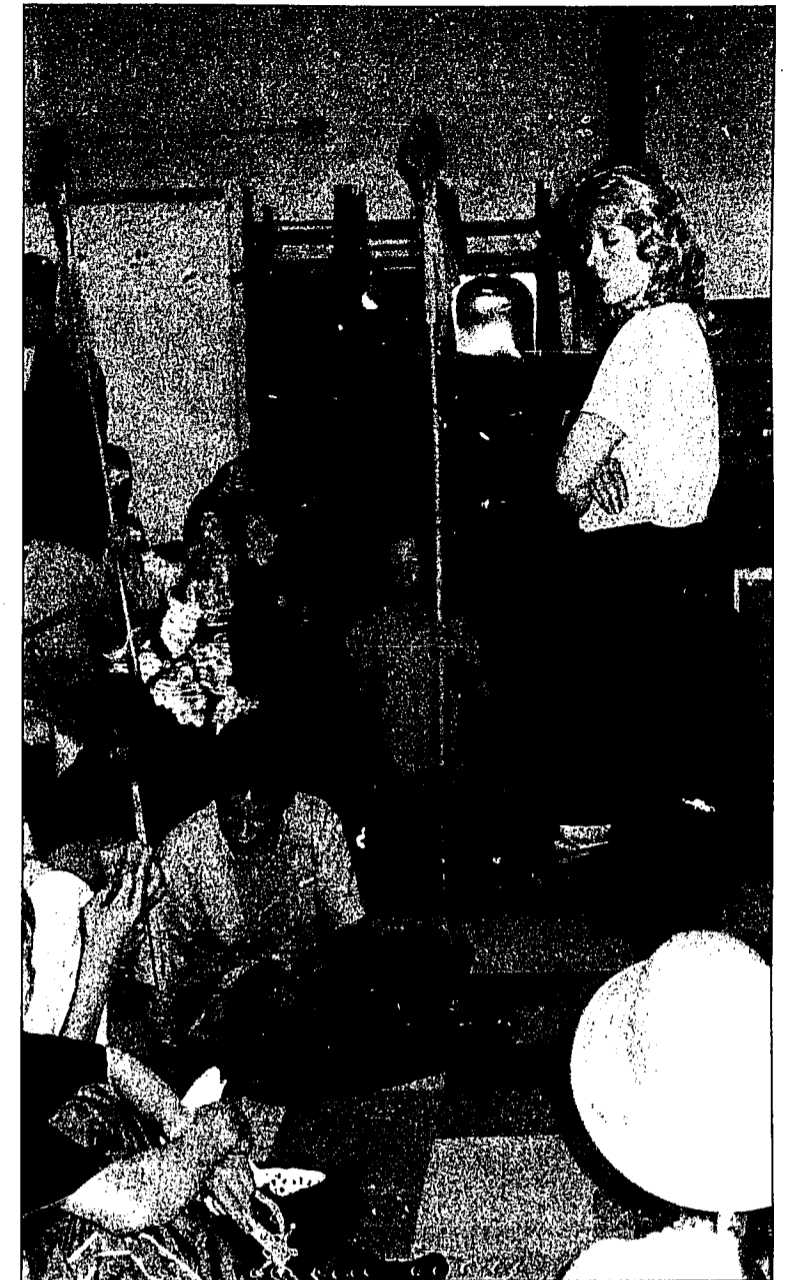


Jon Phipps, Jessa Lindford, Laura Love, Niki Minjares, Cody Thompson and Cody Rowe.

Parent Sharon Rowe putting the finishing make up touches on Lindsay Newells pirate face.



Jon Phipps as Professor Schmo. Laura Love shared his daughter's role with Katie Williams.



Director Sharon Teague with some last minute instructions for the cast.



From left: Beau Maciag, Katie Williams, Cody Thompson, Jon Phipps and Stormy Kelly in scene from Act I.

The Seasons of the Swan



Pathfinder file photo by G. Noland

Send some pleasant news to Someone!

...with a Pathfinder subscription. Weekly photos of people, wildlife, and happenings are regular features. Keep yourself, your friends and relatives informed of winter and summer events such as the Seeley-Monture Sled Dog Race, O.S.C.R. cross-country ski race, Winterfest, the Fourth of July and others.

		Subscribe and stay in touch weekly!	
Send payment with coupon to P.O. Box 702, Seeley Lake, MT. 59868		1 Year (52 issues)	6 Months (26 issues)
Mailed to: Missoula, Lake, or Powell County		20.00	10.00
Elsewhere in U.S.		25.00	12.50
Name _____ Street or P.O. Box _____ City _____ State _____ Zip _____		Please indicate if New () Renewal () or Gift ()	

Cliff Nelson Junior High Annual Award

Cliff Nelson Memorial Scholarship committee member, Kathy Davis, is shown here presenting the Eighth Grade homeroom teacher, Jenny Rammell, with the annual Cliff Nelson Junior High Award, a check for \$100, just before school ended.

The money may be used for an eighth grade end of the year activity.

This year the money was spent on decorations for the eighth grade graduation ceremony which was held last week in the Seeley Lake Elementary gym.



Weather

DATE	HIGH	LOW	CONDITIONS
Jun 3	63	36	0.10" precip., mostly cloudy, a.m. shower.
Jun 4	71	35	Partly to mostly cloudy.
Jun 5	71	45	Mostly cloudy.
Jun 6	67	45	Trace precip., partly cloudy.
Jun 7	62	29	Mostly clear a.m., mostly cloudy p.m.
Jun 8	62	35	0.33" precip., trace snow, mixed rain/snow a.m., light rain p.m.
Jun 9	44	32	0.13" precip., overcast steady drizzle.

Richard E. Taylor, Seeley Lake RD
 Ph: 406-677-3913; fax: 406-677-3902
 email: retaylor@fs.fed.us

Foreign Exchange hosts wanted

The Pax Program of Academic Exchange, a not for profit organization, is seeking host families for exchange students. Pax students arrive in the U.S. in August for an academic homestay experience. They speak English, have full medical insurance and their own spending money.

Host families provide students with a bed (a separate bedroom not required), a quiet place to study, meals and a warm supportive environment. Young couples, single parents and retirees are all welcome to apply as hosts.

If you would like to learn more about the rewards of hosting and to view the profiles of PAX students please contact Larry Ashmore, Community Coordinator at 677-2415.

CRYSTAL CLEAR SPECIALTY SPRAYERS

Book Now!
677-2236

for all your.....
INTERIOR—EXTERIOR
LOG or FRAME
painting, staining, oiling
and laquering needs.

LOG HOME CAULKING
or CHINKING

Also offering • DRYWALL
hanging, taping, texturing

WOOD OR METAL SANDBLASTING
PRESURE WASHING AND PAINT
REMOVAL SERVICE
Licensed • Bonded • Insured
BIG OR SMALL • NEAR OR FAR • give
RICK & POLLY a call • 677-2236

677-9229 NOW OPEN YEAR 'ROUND

Steak 'n Shake

"THE PLACE FOR STEAK"

"OPEN 7 DAYS A WEEK"

The World's Gateway to the Seeley Swan

Glen's
Automotive Service, Inc.

~Engines~ ~Shocks~ ~A/C~
 ~Computer Diagnostic Analyzer~
 ~Brakes~ ~Custom Exhaust~
 ~Transmissions~ ~Clutch~
 ~Electrical Testing~

Major Credit Cards Accepted

Glen Morin - Owner

Hwy 83 - PO Box 246 - Seeley Lake, MT 59868 - 677-2141

WOLD'S VALLEY MARKET

Locally owned
& operated

One Mile South of Seeley Lake
on Scenic 83

A member of Associated Food Stores, Inc.
SEELEY LAKE, MONTANA



Open 7 Days A Week!
Sunday thru Saturday — 7 a.m. to 10 p.m.

406/677-2121

WE ARE MEMBERS OF



SEE INSERT SPECIALS

Effective June 12, 2002 - June 18, 2002 • POSTAGE STAMPS • ATM MACHINE

The ESPRESSO BOOTH

Easy Access from Whitetail Drive
NOTE HOURS

Mon. thru Sat. 7:00 a.m. to 4:00 p.m.
Sunday - 7:00 a.m. to 3:00 p.m.



Salad Special

of the week

Garden Patch Produce

"Baby Spinach Salad"

A grandiose serving of fresh young baby spinach, sweet red onion, tender raw baby corn, sprinkled with zesty parmesan cheese & mixed expertly with **Litehouse Fat Free Honey Based Dressing**, on top or on the side. Popeye himself would be impressed!

Regularly \$4.25 — save .50 this week! — Only \$3.75

Only 3 Weight Watcher points for this salad!

We also have a house Veggie Salad available upon request!

YMCA News Update on Activities

Bike Rodeo: The Bike Rodeo was postponed due to rain. We will try to reschedule for late June or July.

Summer Youth Programs: The YMCA Outreach will be offering several programs this summer: **Gymnastics and Tumbling Camp**, June 24-28-Tumbling (3-5 year olds), 9:00-10:00 am; Gymnastics (6 years old and up), 10:30-12:00. Both programs will be held at the Seeley Lake Elementary School Gym. The registration fee is \$20.00. **Outdoor Fun Camp**, July 8-12 (kindergarten-8th grade), 10:00-3:00 at the Swan Ecosystem Center in Condon. The registration fee is \$30.00. **Volleyball Camp**, July 8-12 (4th-8th grade), 9:00-10:30 at the Seeley Lake Elementary School Gym. The registration fee is \$20.00. **Lake Swimming Lessons**, July 15-24 (toddler to adults) at the Holland Lake Campground. The registration fee is \$25.00. **Tennis Camp**, August 5-16 (8 years & up) at the Seeley Lake Community Park tennis courts. The registration fee is \$20.00.

Family discounts are available for all programs.

Pre-registration for programs is recommended. Some programs have limited space available.

Seeley Lake Swim Lessons: Help Needed! We have found an instructor for swimming lessons at Seeley Lake, but need a lifeguard and helpers in order to provide a safe and responsible swimming program. Please call the Outreach office 677-3330 if you can help.

For more information please stop by the Seeley-Swan Outreach office in the Lazy Pine Mall or call 677-3330. Office hours are Monday, Tuesday and Thursday from 8:00 a.m. to noon, and Wednesday from 8:00 to noon and 1:00 to 5:00 p.m.

Special of the Week

"Almond Roca Mocha Latte"

Almond Roca syrup, a blend of natural almond & buttery caramel flavor, is added to Hershey's chocolate, steamed milk & espresso for a drink as entertaining to sip as it is to say! A dollop of whip cream is added upon request.

Save .25 cents on any size this week!

"FYI"

1938, Nescafe' instant coffee is invented by the Nestle' company as it assists the Brazilian government in solving its coffee surplus problem.

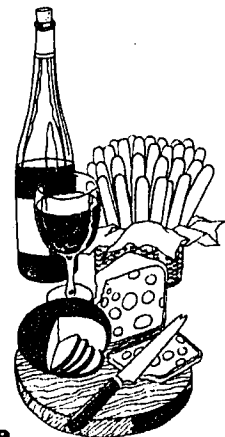
The Wine Rack

Wine of the Week

Meridian "Pinot Grigio" 2000

.750 ml. (Pronounced PEE-no GREE-zho)

This California Coastal wine is superbly balanced, with blended grapes from the premier vineyards of Meridian. It is bright and refreshing with pronounced citrus aromas and lightly textured flavors of grapefruit, green apple and tangerine.



\$7.99

For the Month of June