

Graduation, Loon & Fish Festival this Memorial Day Week

<http://www.seeleyswanpathfinder.com>

Seeley
Swan

PATHFINDER

Vol XVII, No. 4

"Voices from the Valley"

Thursday, May 23, 2002

Performing Arts Series schedules concert May 30

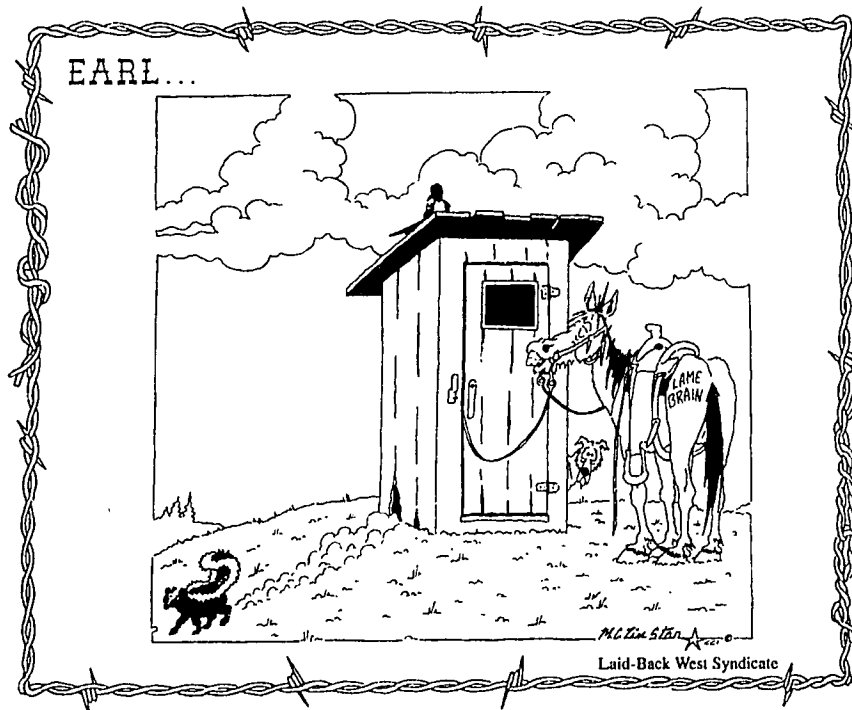
Fishing Time!

Recent Photo at Salmon Lake

G. Noland photo

email: pathfinder@montana.com

MONTANA HISTORICAL SOCIETY LIBRARY
205 N. ROBERTS ST.
HELENA, MT 59601-4514



GARY NOLAND, EDITOR

PUBLISHER'S NOTICE

MILLIE NOLAND, ADVERTISING

Seeley Swan Pathfinder (ISSN 0894-2994, USPS 000-919) is published weekly by Pathfinder Press, Inc., Box 702, Seeley Lake, MT 59868 (ph. 406/677-2022). Area served is Seeley Lake, Swan Valley and neighboring communities. Distribution is by mail subscription (\$20 per year in Missoula, Lake or Powell County; \$25 per year elsewhere in U.S.) and by newsstand sales. Periodicals postage paid at Seeley Lake, MT. Postmaster: Send address changes to: Seeley Swan Pathfinder, P.O. Box 702, Seeley Lake, MT 59868-0702.

COMMUNITY CALENDAR

Community members are invited to submit dates, times and locations of events, meetings and other happenings. Submission deadline: Friday, 5 p.m.; call 677-2022

PUBLIC MEETINGS

S.L. Water Bd., 4th Wed., 5pm, Glen's Auto
Lions Club, 4th Wed., 6:30pm, S.L. comm. Hall
S.L. Sewer Dist., 4th Thur, 5pm, Pyramid Mtn. Lbr.
Quiltmakers of the Tamara's, 4th Thur, 9am, S.L. Comm. Hall
Swan Valley Comm. Club, 4th Mon, 7pm, Comm. Hall
S.L. Refuse Bd., 4th Mon, 7pm, fire hall
VFW, 4th Tues, 7pm, S.L. Fire hall

WEEKLY MEETINGS:

Alcoholics Anonymous: (help for those with a suspected drinking problem)
-Condon: Faith Lutheran Church, every Sunday, 1pm
-Seeley Lake: Every Wed, 7pm, Living Water Catholic Church, on SOS Rd. For info: 677-3271 or 677-2892.
*Potomac: 406-244-5204

Alateen: (help for teenagers of alcoholic families) Hotline 677-2753
Overeaters Anonymous: every Thursday, 7pm, Faith Lutheran Church, Condon, 754-2371
Missoula County Commissioners Public Mtg, every Wed, Courthouse Annex, Room 201, Missoula, 1:30 pm.
T.O.P.S. Mtg, every Thurs, Mission Bible Fellowship bldg., Seeley Lake, 10am.
MONTHLY SERVICES: FAIM Outreach Specialist, 1st & 3rd Thur, 9:30-3, Seeley-Swan Med. Ctr.
Pinochle, every 1st & 3rd Sat., Senior Citizens Center, 11am-4pm
DUMPSTER TRANSFER SITE: Summer hours (May-Sept) - Wed, Sat & Sun, 9am-5pm, 677-3809
SSTEP Crisis Help Line: 677-3177. Domestic violence, sexual assault, child abuse, community outreach & education
Food Bank: Tues, 12-4 pm, next to Multi-purpose Room, S.L. Elementary, 677-5025

Loving Hearts Thrift Store: Open Wed, 12:00-5:00, Sat, 11-3, 677-5683 (emergency 677-2110)
Seeley Lake Community Hall: For hall rental, call Cheri Thompson, 677-2454
LIBRARIES:
Seeley Lake Public Library (Seeley-Swan High School) Regular hours: Mon-Fri., 8-3pm (closed 11am-noon for lunch); Wed., 3-8pm; Sat, 10am-3pm. Story Time-Saturdays at 11 a.m.
Swan Valley Library (Condon) Tues, 11am-4pm; Wed, 11am-7pm; Fri, 11am-4pm
Family History Ctr.-LDS Church: Open Wed, 11am-3pm. Call 677-2642 or 677-2575.

EMERGENCY: Dial 911 if you live in Seeley Lake, Condon, Greenough or Ovando.
Swan Lake Residents: 886-2324 (Fire, QRU or Search & Rescue) or 1-406-752-6161 for Sheriff, Highway Patrol.

Editorial Comment

Chips . . . bits & pieces

We have just enough room left (space got so tight that we had to hold back several ads and copy for next week) to wish you a happy and safe weekend. With Memorial Day, SSSH graduation, and the Loon and Fish Festival, it promises to be very busy. Schedules are inside. Have fun, and be safe!

—Gary Noland

Reception for new superintendent at SLE Thursday

Seeley Lake Elementary School invites the community to a reception for Patty McPherson on Thursday, May 23, from 2:00 to 3:00 p.m. at the school.

Ms. McPherson accepted a position as Superintendent of Schools at Seeley Lake Elementary. She will begin work in July. Current Superintendent Bill Hyde is resigning effective June 30 to devote time to his consulting business.

Fort Missoula Levy May Help Here

by Addrien Marx

June 4th is an important voting day. The Seeley Lake Historical Museum and Visitors Center and the Seeley Lake Historical Society have been involved with various county officials in a coordinated attempt to draft a plan that allows the rural areas of Missoula County to seek capital improvement funds for the purpose of preserving local history. This plan is contingent upon the passage of the mill levy run by the Historical Museum at Fort Missoula - known as "YES to HISTORY." One-quarter mill of that levy will be earmarked for the rural and local area history endeavors.

Dr. Bob Brown, curator at Fort Missoula, stresses that the focus of the Museum is to accommodate the entire county of Missoula - not just the city. "We are THE county museum and will stay with our original mission but make it more responsive to the outlying districts." Evidence of the new direction may be seen with the Historical Weaving Display that the Historical Museum at Fort Missoula has set up at the Seeley-Swan High School Library. "We will do two

displays a year at the public library housed in the local high school," commented Bob Brown at a meeting in which he and Fern Hart were asking for local input relating to the historical needs of this community.

County Commissioner Jean Curtis said at a meeting last fall, "I grew up in this Valley and I know how fast the history is leaving us." She has also supported the interest displayed by Dr. Bob Brown and his board at Fort Missoula. Such broad community wide support of the "barn" project continues to be evident as people locally and county-wide continue to search for ways to fund the last stages of completion.

Now, with a valid, workable plan for such a grant application, the Seeley Lake Historical Museum and Visitors Center and the Seeley Lake Historical Society are working to inform local residents that a "YES" to the history mill will be of great benefit to the Seeley-Swan Valley. Such a large grant would get the Historical Museum and Visitor Center to a point that nears completion. Your vote on June 4th would be greatly appreciated.

Main Street stands to benefit the most

As a board member of Glacier Country, I have been surprised by much of the research available on Montana Tourism. I had assumed that lodging establishments benefited most from a healthy tourism environment. In reality, "Main Street" retailers collect the largest piece of the "financial" pie.

According to a "non-resident spending in Montana" survey, conducted by the Montana Institute for Tourism & Recreation Research at the University of Montana, the pie is divided as follows: 24% retail sales, 22%

gas & oil, 18% restaurant & bar tabs, 17% lodging or camping.

Our local Visitor's Center/Museum, when complete, will certainly help draw tourists to the area. Specifically, the cultural visitor, who is known to spend more money in the local community, stays longer, & leaves less of an impact on the local environment.

Please vote "Yes to History"
Dianna Plum
Double Arrow Resort

Open House at cemetery Monday

An "open house" will be held at the Seeley Lake District Cemetery on Monday, May 27th, 2-4 PM.

The completed equipment / office building will be open and refreshments will be served.

Cemetery Manager Derek Ellinghouse

Thankful for cemetery in Seeley Lake area

Dear Editor,

I want to say how thankful I am to have a cemetery in the Seeley Lake area. In a small community such as this, it seems right and good that the funeral or memorial service for our loved one should be in our "Home Town." Better yet, that the interment can also take place in the area.

I, for one, was very grateful that we didn't have to do a lot of traveling on the day of these services. Although I own two

cemetery lots about 100 miles to the north, I went ahead and purchased the lot next to my late husband in the Seeley Lake Cemetery, as the price was so reasonable, and it gives me peace of mind knowing my children will have one less responsibility.

We all need to continue our support of the Cemetery on the ballot on June 4th.

Helen Rose
Seeley Lake, Montana

Alpine Artisan Performing Arts series begins next week

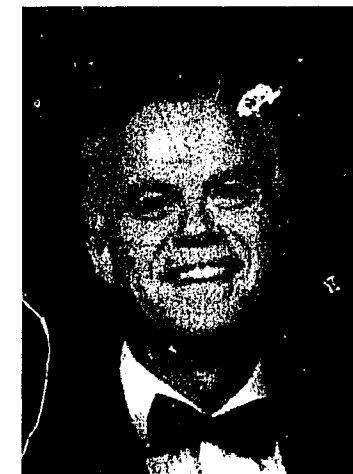
by Rolly Meinholtz

Thursday May Thirtieth is the date for the 2 Valleys Stage preview event, *A Grand Celebration*. This introductory concert begins as four hands and a Grand (piano) join with four voices in celebrating love songs by Brahms.

The hands belong to concert pianists Steven Hesla and Jody Graves who will sit side by side at the high school's new Grand Piano and bring forth the sometimes boisterous sometimes gentle melodies of Brahms' *New Love Song Waltzes*.

The voices belong to Anne Basinski, soprano, David Cody, tenor, Dawn Douglas, soprano and Steven Kalm, baritone who will sing the love songs as solos, duets, and ensemble pieces. The songs will be sung in the original German. Rolly and Peggy Meinholtz have translated the short poems that inspired the songs into contemporary English which they will read before they are sung.

Next on the program Jody Graves has chosen to play "Un Sospiro" an etude by Franz Liszt. Graves says, "Liszt was a champion of the piano, and was a leader in promoting art for everybody. Often he would give his master classes and concerts for free so that the proceeds could go to buy another piano or provide income for other musicians." The whole program comes from the Romantic Period and Graves feels that Liszt was the epitome of the "Romantic



Steven Hesla



Jody Graves

Spirit."

To round out the concert *The University of Montana's Piano Trio* with Steven Hesla, piano, Fern Glass Boyd, cello, and Margaret Baldrige, violin. The trio will play Mendelssohn's highly melodious *Piano Trio in D Minor Opus 49*, a work that may remind audience members of the fairies in Mendelssohn's *Midsummer's Night Dream Suite*.

The musicians are faculty members at the U of M Music School. Among them they have received training and given performances through out the US and Europe. Performances by these various musicians have been popular at venues in Butte, Whitefish, Billings, Helena and other cities and towns across Montana.

The two groups will also present programs for area schools.

The piano Trio will give a presentation at The Swan Valley School in Condon on Wednesday May 29 at 2:00 pm. This short program is co-sponsored by the Swan Valley School Arts Committee. The public is welcome. The Pianists and Quartet will present a workshop for fourth through eighth grade students and interested high school students at the Small Gym in the Seeley Swan Highschool on Thursday afternoon May 30 at 1:45.

A Grand Celebration is made possible in part by a generous donation from Bill Hyde, an Opportunity Grant from the Montana Arts Council, and many volunteer hours by community members.

Adult tickets for the May 30 concert will be \$7 (half the "at the door" price for tickets during the regular 2 Valleys Stage season.) Tickets for students from grade one through 12 are \$3.50. Out of consideration for the artists and audience, children under 6 years of age will not be admitted. This May program is most appropriate for people age 9 through 99.

2 Valleys Stage season tickets will be on sale at the concert intermission at special introductory prices which are \$40 for an adult ticket and \$50 for family ticket. Family tickets admit one parent

REAL ESTATE TALK

"A real estate newsletter sponsored by the team of professionals at Clearwater River Realty, Inc. featuring current trends, market condition and helpful information"

Market Update

Property values in general have continued to increase in recent years. The percentage of increase varies depending on the type of property and the supply and demand of certain types of properties available for sale in the open real estate market. Properties located on a river or lake continue to be in the highest demand. Although the average days on market continues to be high as compared to a national average. We attribute this to our relatively short prime selling season of approximately June 1st through mid October of each year. According to the Missoula County Multiple Listing Service, in the calendar year of 2001 the following sales took place in the Seeley-Swan Valley.

2001	Average Sales Price	# of Properties Sold	Average Days on Market
Seeley Lake Land	\$46,751.	72	465
Seeley Lake Homes	\$141,404.	64	250
Swan Valley Land	\$72,485.	10	307
Swan Valley Homes	\$156,088.	17	311

There are currently approximately 70 homes and 117 bare land properties on the market in Seeley Lake and 23 homes and 17 bare land properties on the market in Condon/Swan Valley. The relatively high number of bare land parcels currently for sale in the Seeley Lake are due to multiple parcels being available for purchase in a given subdivision as follows: Double Arrow Ranch 50, The Meadows (golf course lots) 28, River Watch 7 and Hillcrest Heights 5. If you would like to learn more about recent sales and or current properties available for sale in the valley please contact one of the real estate professionals here at Clearwater River Realty, Inc.

Two Prime Highway 83 Locations
Seeley Lake & Swan Valley

406-677-3000 or 406-754-3300
Info@SeeleySwanBrokers.com



Note: The MLS data used above is supplied by the MLS of authority and is based on sales and current listing information in the Seeley-Swan Valley (Area 77 of the Missoula County Multiple Listing Service) from 1/1/01 through 12/31/01 as reported to the MLS by 1/7/2002. The MLS does not guarantee and is not in any way responsible for its accuracy. Data maintained by the MLS may not reflect all of the real estate activity in the market.



Home Loan Center

Rates are as low as they have been in years. Refinance now and lower Your monthly payments or get cash out for a home addition, or to pay off high interest rate credit cards.

We're located in the In the Lazy Pine Mall
Call us at 677-5000, or visit us on the web at <http://www.lendamerican.com>

This Memorial Day stay at the Double Arrow Resort
Lodging rates are 30% off for this special weekend, May 24-27
677-2777 1-800-468-0777

677-9229 NOW OPEN YEAR 'ROUND
"THE PLACE FOR STEAK"
"OPEN 7 DAYS A WEEK"

Research shedding light on Swan black bears

by Mike Thompson

Where do black bears den in the Swan River drainage?

Well, you've been looking in the wrong places if you haven't been looking "up." That's according to preliminary results from Montana Fish, Wildlife & Parks (FWP) research over the past two years.

Rick Mace, the project leader, shared photographs of den sites with FWP Region 2 employees at a coordination meeting last week in Missoula. Scenes of wintry

mountaintops on the crests of the Swan and Mission Ranges characterized about half of the den sites where radioed black bears have led Rick so far. "I thought grizzly bears were the only bears denning in that kind of country," he confessed to us.

But, the most interesting den sites were the other half—those clustered in the Swan Valley bottom. Still, you need to keep looking upward. The representative photo that Rick showed us was of an adult female in a cavity near the top of a standing cottonwood tree.

Game Range Ramblings

by Mike Thompson, Wildlife Biologist
Montana Fish, Wildlife & Parks



These revelations on the denning behavior of black bears in the Swan drainage complicate Rick's life almost as much as they enrich ours. That's because one important objective of Rick's research is to document reproductive rates of the local black bear population. However, his radioed bears stay out of sight in the forest and don't allow him to see them or their cubs while they're active in summer and fall.

No problem, Rick thought. He would follow radio signals to sleeping bears in the winter and count cubs in their dens.

But, not without considerable difficulty, as it turns out. Whether testing his winter mountaineering skills and endurance on the treacherous ridgelines of the highest mountains, or picking his way up tall, rotten and unreliable cottonwood trees, Rick's data on cub production and survival will come at great personal expense.

The rest of us who are sick, lame or lazy are pulling for him. The first reason, of course, is that we're glad it's Rick clinging to a sloughing slab of tree bark, instead of us. But, mostly we're pulling for him because we need to know what he set out to learn:

Is there any relationship between the demographics of the living black bear population and the harvest statistics that FWP uses to manage that

population?

Well, we already have the harvest statistics. Every hunter who harvests a black bear is required by law to present the complete hide and skull to FWP for tagging and inspection. At that time, FWP personnel extract a tooth, from which the age of the bear is determined and the age-structure of the harvested population can be developed. Also, at that time, the sex of the bear is checked, and the percentage of males and females in the harvested population is subsequently developed.

What we don't know is whether there is any correlation between changes in the age and sex structure of the harvested population and those of the living population. And, the only reason we need to know that is because we can't monitor the living population directly without having lots of people like Rick doing what he is doing at great expense.

It's too early to draw conclusions, but so far the death rate in Rick's marked sample of black bears is fairly close to the 10% guideline for maintaining a stable population. He has documented the loss of 3 bears to hunting, 2 bears to management removals (in response to nuisance complaints), and 1 to a vehicle collision among 70 marked black bears so far.

He also found two newborn cubs

frozen at a den site that the mother abandoned in mid-winter. The location happened to be in the middle of a winter logging operation, leaving one to wonder whether the disturbance had displaced the bear. Rick later followed her radio signal to a new den that was located 9 miles away.

So, how many black bears are living in the Swan? Well, FWP is snagging bear hair at sampling sites all over the drainage in an attempt to answer that question, using DNA analysis. At each site, a smelly concoction is placed within a barbed wire enclosure for a 2-week sampling period. Then crews painstakingly retrieve all hairs from all barbs and catalogue them for analysis.

In this manner, Rick's crew submitted 317 hair samples from 177 hair snagging devices in the Swan last year, from which 212 individual black bears were identified. Then, using an expansion factor based on DNA from harvested bears and other data, a point estimate of 523 black bears was derived. The statistical confidence interval around this estimate is wide, and indicates that the true number is probably somewhere between 335 and 799 bears. Hopefully, this can be refined in the future.

In the meantime, you could say that there's about 1 black bear per square mile in the Swan drainage, and you wouldn't be very far off.

And, as always, wildlife research intended for one particular purpose yields other unforeseen insights into wildlife behavior. In this case, one unforeseen insight from FWP's black bear research in the Swan is that people who are interested in managing for black bear denning habitat will learn to look "up" as well as "under."



COMPLETE PROPANE SERVICE & SALES

- Home Appliance Sales •
- "Top of the Line"
- Ducane and
- Broilmaster BBQ's

Refrigerators
Ranges • Furnaces
Water Heaters

406 721-2300

NORTHERN ENERGY INC.

3301 West Broadway
P.O. Box 16044
Missoula, MT 59808

NOTICE OF ELECTION ON AN INCREASE IN PROPERTY TAXES OF UP TO ONE (1) MILL FOR SUPPORT OF THE SEELEY-SWAN CEMETERY DISTRICT, SCHOOL DISTRICT 34, PRECINCT 27

Notice is hereby given that pursuant to a resolution of the Board of County Commissioners adopted March 18, 2002, the question of an increase in property taxes of up to one (1.0) mill for support of the Seeley-Swan Cemetery District will be submitted to the registered voters of Missoula County, MT at the election to be held on June 4, 2002.

The polls will be open at 7:00 a.m., and will continue to be open until 8:00 p.m. on Election Day at all polling places.

The absentee ballots may be requested in writing from the County Election Administrator during a period beginning 75 days before the day of election and ending at noon on the day before the election. A ballot shall be sent to electors submitting valid requests after the official ballot is printed. The text of the resolution submitting the question to the electors is set out below.

Dated this 15th day of March, 2002.

Vickie M. Zeier, Election Administrator
Missoula County

RESOLUTION 2002-029
SETTING DATE FOR SEELEY-SWAN CEMETERY DISTRICT

MILL LEVY VOTE AND FIXING THE FORM OF THE BALLOT

WHEREAS, the Board of County Commissioners received a request from the Board of Trustees of the Seeley-Swan Cemetery District to submit to electors the question of a levying tax of 1 additional mill for the support of the Seeley-Swan Cemetery District, and

WHEREAS, on March 13, 2002, after due public notice, the Board of County Commissioners conducted a public hearing on the request to submit to the electors a 1 mill levy for the support of the Seeley-Swan Cemetery District, and

WHEREAS, based on the testimony of those persons appearing at the hearing, it appears to be in the public interest to submit the question of whether a levy of 1 mill for the support of the Seeley-Swan Cemetery District should be authorized to the electors.

NOW, THEREFORE, BE IT RESOLVED the question of whether an additional tax not to exceed 1 mill should be levied for the Seeley-Swan Cemetery District be submitted to the voters at the primary election to be held on June 4, 2002.

BE IT FURTHER RESOLVED that the question be submitted to the electors in substantially the following form:

Shall Missoula County be autho-

ized to levy annually an additional tax not to exceed 1 mill for the purpose of supporting the Seeley-Swan Cemetery District. If approved, the additional 1 mill will result in a maximum levy of 5 mills for the support of the Seeley-Swan Cemetery District. Passage of this proposal will subject a home with a market value of \$100,000 to a tax increase of \$2.39 per year and a home with a market value of \$200,000 to a tax increase of \$4.77 per year.

() FOR the additional 1 mill levy to support the Seeley-Swan Cemetery District.

() AGAINST the additional 1 mill levy to support the Seeley-Swan Cemetery District. The Elections Administrator is directed to place the question on the June 4, 2002 Primary Ballot, to give all notices of the election required by law and to take any other actions necessary to submit the question to the electors. DATED this 18th day of March, 2002.

Missoula County Board of Commissioners

/s/ Jean Curtiss

/s/ Barbara Evans

/s/ Bill Carey

Attest

/s/ Vickie M. Zeier

Clerk and Recorder

Approved Form and Content

/s/ Michael W. Sehestedt

County Attorney's Office

**Promote a healthy stand of trees.
Reduce fire hazard. Create views.
Beautification of natural woodscaping**

Selective tree thinning, pruning and slash clean-up for the small homeowner acreages as well as larger properties. Specializing in low-impact methods to preserve natural terrain and native fauna. **FREE ESTIMATES.**

Western Land Management
CALL PAULA K. WALSH
406 677-5330

OPEN ALL WEEKEND!

UGLY DOG CHICAGO STYLE

1/4 Pound JUMBO HOT DOGS BRATWURST POLISH DOG ITALIAN SAUSAGE

Kids size Dogs too!

Have an Ugly Dawg in your own back yard!
We can do picnics, Barbeques & Parties!!

CALL 210-1031 for info or Order to Go

Hungry Bear

Steak

Seafood

Pizza

Open 7 Days
a Week

Breakfast 8 a.m.

Lunch 11:30 a.m. • Dinner 5:00 p.m.

Bar Opens at 4:00 p.m.

Steak House

Swan Valley, MT • Hwy 83 MM 38-39 • 754-2240

Alpine Artisans Presents 2 Valleys Stage

Introducing Our First Season of High Quality Musical Performances
And here's what's to come

In September - The Missoula Symphony Brass Ensemble September 13th and 14th, a joyous shout from sounding horns

In December - Celso Machado (Sell-so Ma-shod-doe), a world class virtuoso at both classical and Brazilian folk

In January - Cocinando (koh-see-nan-doe), a fine Big Band's sizzling hot Latin jazz!



Celso Machado

In March - The Montana Woodwind Trio - Roger McDonald, Margaret Schuberg, and Maxine Ramey, bubbling melodies to tickle your fancy, spritely counterpoint to lift the spirit

In May - First Annual Young Artist's Concert. This year's host/sponsor will be Steven Hsela, Montana's premiere concert pianist.

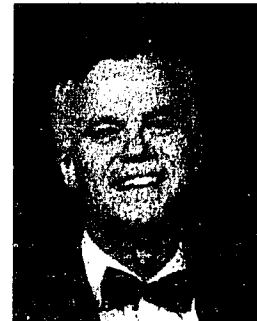
All performances of *2 Valleys Stage* will be at 7:00 PM with Seeley Lake performances taking place in the small gym of Seeley-Swan High School (unless otherwise announced); Condon performances will occur in the gym at Swan Valley School.

Special Discount Season Ticket Prices available May 16th to June 4th of 2002

Purchase them at Books, Yarn & More, 677-3300, the May 30th at the preview event, at the AAI's *Loon and Fish Festival* Memorial Day Weekend, or call Rolly Meinholtz at 677-3171 or Petie Luckman at 677-2762.



Cocinando — Latin Jazz



Steve Helsla

Clearwater River Realty, Inc. Clearwater River Realty, Inc.



Hwy 83 & Locust Lane • P.O. Box 990

Seeley Lake, MT 59868

406-677-3000 / 1-800-577-3013

email: Seeley@SeeleySwanBrokers.com

6124 Hwy 83 N

Swan Valley, MT 59826

406-754-3300 / 1-888-577-3321

email: Swan@SeeleySwanBrokers.com

www.ClearwaterRiverRealty.com

In-Home Business

Why go to work when you can work at home? This large 42x48 heated shop that has a finished office and is near all town amenities. The convenient location has a fenced yard, covered deck, carport and a hot tub. The bonus is the 4 bedroom 2 bath manufactured home that has a 280 sq. ft. frame addition. On city water and handicap accessible. Price reduced to **\$139,000.**

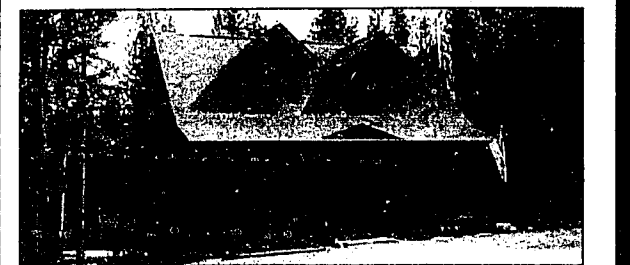


Start with a Starter
Interest rates at all time low—you may be surprised at what you can afford! "Super Good Cents", 3 bedroom, 1 bath, 1664 sq. ft. home. Located on a landscaped, corner lot with carport & oversized storage shed. Enjoy value with comfort at an affordable **\$79,900.**

Grab This Getaway

This 3 BR/2 BA log home is great for a getaway cabin or an affordable home. Convenient to everything - schools, the lake, shopping, restaurants, recreation and the park. High wood ceilings, oak cabinets and an unfinished basement waiting for your handiwork. Immediately available. **\$119,000**

Convenient Living
This well-built cedar sided home features 4 bedrooms and an office area. The living room has vaulted T&G ceilings and a bay window. The kitchen has sliding glass doors that open out onto a deck overlooking the back yard. An attached two car garage plus a large 3 car carport provides ample storage. This attractive home is located near schools, shopping and the lake for convenient living! **\$134,000**



Country Charm
Delightful cedar-sided home with dormer accents and walk-out basement. Wooded, park-like setting on almost 2 acres on the Double Arrow Ranch. Quiet and peaceful—yet close to town for convenience. 3 bedrooms, 2 full baths and lots of special features such as oak flooring and cabinets, jacuzzi tub, wraparound deck, and an inviting front porch. Walk-out basement is approximately 1/2 finished for a family room and additional bedroom and bath. This home has been well cared for—and it shows. You will feel at home here! **\$154,500**

Clearwater River Realty, Inc. Clearwater River Realty, Inc.

One 2 One Consultants
congratulates

Rhonda Malecha Photography

on the launch of her new web site!

MalechaPhotography.com

Portable exhibit on display at the library

The Historical Museum at Fort Missoula has a portable exhibit entitled *Missoula Rag: Something Woven* on display at the Seeley Lake Library. The display includes a history of weaving in writing and pictures, pattern drafts for weaving (similar to an architect's blue-

prints), and a woven hanging. This exhibit will be on display through the fall.

The Seeley Lake Library (located at Seeley-Swan High School) is open school days, Monday through Friday from 8:00 a.m. to 3:00 p.m. (closed 11:00 a.m. to

noon), Wednesdays from 3:00 to 8:00 p.m., and Saturdays from 10:00 a.m. to 3:00 p.m. Summer library hours will resume in June. At that time, the Library will be open Wednesdays from 3:00 to 8:00 p.m. and Thursdays from 10:00 a.m. to 3:00 p.m.



DON MORMAN
DEMOCRAT FOR
SHERIFF MISSOULA COUNTY

Don Morman for Your Sheriff
Professionalism - Integrity - Service

Proven Professionalism

- Carroll College graduate in political science with an emphasis in law enforcement
- Graduate of the FBI National Academy. Member of the selection committee since 1991.
- Drug Enforcement Administration School graduate.

Proven Experience

- 27 years of experience in the Missoula County Sheriff's Department from the ground up.
- Departmental experience in dispatch, jail, patrol, civil process, burglary and theft, warrants, narcotics, and SWAT team.
- 21 years as a supervisor, 12 years of administrative experience (5 years as patrol sergeant, 5 years detective lieutenant, 10 years patrol captain, 2 years administrative captain).

Proven Community Service

- DARE and School Resource Officer supervisor.
- Safe Kids/Safe Communities board member.
- West Central Drug Task Force project manager.

Please Vote on Tuesday, June 4

PAID FOR BY MORMAN FOR SHERIFF, SUSAN REED TREASURER, BOX 594 LOLO, MT 59847

CRYSTAL CLEAR SPECIALTY SPRAYERS
Book Now!
677-2236
for all your.....
INTERIOR—EXTERIOR
LOG or FRAME
painting, staining, oiling
and laquering needs.

LOG HOME CAULKING
or CHINKING

Also offering • DRYWALL
hanging, taping, texturing

WOOD OR METAL SANDBLASTING
PRESSURE WASHING AND PAINT
REMOVAL SERVICE

Licensed • Bonded • Insured
BIG OR SMALL • NEAR OR FAR • give
RICK & POLLY a call • 677-2236

Aunt Kat's Theatre Camp on Salmon Lake

Providing a Creative Theatrical Experience
along with summer camp activities for Children ages 6-12+ yrs.



Activities include:
Boating, Swimming, Crafts, Campfire,
Music, Dance, Stage Performances,
Writing a Play & Performing it!

3 day Sessions 2002:
Session 1: July 14, 15, & 16
Session 2: August 4, 5, & 6
Session 3: August 11, 12, & 13
(Circle One Please)

CAMPER QUESTIONS:

What's your favorite story?

What's your favorite activity?

When: Session I: July 14, 15, & 16 (Ages 6-10)
Session II: August 4, 5, & 6 (Any Age)
Session III: August 11, 12, & 13 (Ages 8-12+)

Cost: Day Camp Only \$150 ~ Overnight Camp \$175

Deposit of \$75.00 due 7/1/02

☐ Please send information on Scholarships

For more information contact: Kathleen Vosburgh

Phone: (406) 543-8502

E-mail: auntkatcamp@hotmail.com

Web-site: www.auntkats.com

Enrollment Form

Camper's Name: _____

Camper's Address: _____

Camper's Phone: _____

Guardian: _____

Guardian's Address: _____

Guardian's Phone: _____

Emergency Contact Name: _____

Emergency Contact Phone: _____

Any health problems or diet restrictions: _____

DUMP CABLE FREE DISH!!

Get A FREE DISH Network
Digital Satellite TV System &
FREE Basic Professional
Installation (Value starts at \$298.00).
Just subscribe to
America's Top 50

OVER **60** FANTASTIC
CHANNELS!
JUST \$22.99 mo.

Includes: ESPN, ESPN2,
Cartoon Network, Disney,
Lifetime, Nickelodeon, CNN,
A&E, Comedy, TBS, Sci-Fi,
TNN, TNT, USA, Discovery,
History, Food Network, TLC,
CMT, MTV, and many more.

*Valid major credit card and
12-month commitment required. Product for
promotion may be existing,
remanufactured or discontinued
system based on availability.

EAGLE

Satellite

Serving All

Montana

(406) 721-3662

or (888) 565-6067

Offer ends 7/1/02 or new, first time customers only. All systems
remanufactured or discontinued. All prices, packages and programs
subject to change without notice. Supplies limited to available stock and
based on time checks. Local and state sales taxes may apply. All DISH
Network programming, and any other services that are provided, are
subject to the terms and conditions of the Broadband Network
Agreement, which is available upon request. Signals are transmitted
by satellite and are not subject to the same quality of service as
cable or terrestrial signals. See your DISH Network representative for
complete terms and conditions. All service marks and trademarks
belong to their respective owners.

Forest Service bird walk a part of Loon & Fish Festival

Susan Reel and Dr. Dick Hutto will lead a bird walk on Saturday, May 25, from 8:30 to 9:30 AM. Participants should wear suitable walking shoes and clothing, bring binoculars and a field guide if you have them, and meet at the Seeley Lake Ranger Station.

Susan and Dick expect participants to view bald eagles, loons and area songbirds in the riparian area at the north end of Seeley Lake.

Susan Reel is a wildlife biologist and the educational

specialist for the Lolo National Forest. She developed the Naturewatch Program for the Lolo, which was the first of its kind in the National Forest system.

She produces wildlife interpretive signs and exhibits (see the new Seeley Lake Ranger Station display about Grizzly Bears). Susan also provides hands-on nature education programs about fire and water ecology for school children.

She loves to teach birdwatching to students of all

ages. She enjoys working in the Seeley Lake area because of its natural beauty and rich diversity of bird life.

She and her husband Dick Hutto have two young boys who learned to birdwatch as soon as they could hold binoculars.

Dr. Dick Hutto is a professor in the Division of Biological Sciences at the University of Montana. He directs the Landbird Monitoring Program for the Forest Service and teaches field ecology and ornithology.

His field research has included studies about how fire affects bird communities, and the winter distribution of migratory songbirds in western Montana.

He hosted the national PBS television program BirdWatch, which brought birds, their natural history and conservation to millions of viewers.

He is involved in numerous bird education programs for the public through the University and the Montana Natural History Center, and is especially interested in citizen-based bird monitoring.

This walk is in conjunction with the Loon & Fish Festival at the Seeley Lake Community Hall, Saturday, May 25 and Sunday, May 26, from 10AM to 4 PM.

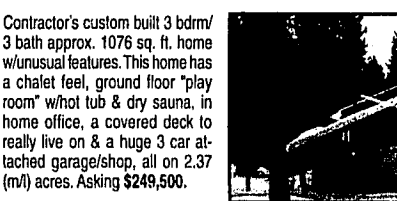
UNIVERSAL MARTIN REALTY

Swan View Riverfront Home

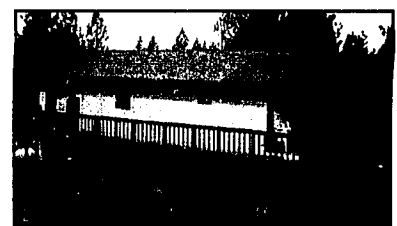
Beautifully maintained 3 bedroom/2 bath approx. 1500 sq. ft. home plus full basement located on the Clearwater River with panoramic views of the Swan Mountain range. This home boasts of many things to give comfort and class. 2 wood-burning fireplaces provide atmosphere as well as heat, along with a forced air propane system and electric back-up. The full walkout basement gives access to the rolling lawn area to the river's edge. Landscaping and gardening have been a passion of the present owner and it shows. This is a home to be proud of. Asking \$229,000. Seller anxious to relocate. Will look at all offers.



Well maintained 4 bedroom, 2 bath manufactured home on foundation w/ covered decks both front and back, good mix of trees & meadow and all on 2+ acres just 2 miles east of Seeley Lake. This home is located on the end of a private drive with all the peace and quiet you would want and horses are welcome. Seller has relocated and most anxious to sell. Asking \$99,500 (firm).



Contractor's custom built 3 bdrm/3 bath approx. 1076 sq. ft. home w/ unusual features. This home has a chalet feel, ground floor "play room" w/ hot tub & dry sauna, in home office, a covered deck to really live on & a huge 3 car attached garage/shop, all on 2.37 (mV) acres. Asking \$249,500.



1920 sq. ft. 3 bed/2 bath fixer-upper in Folsom. This is a split entry home w/ living quarters on both levels, lg. detached shop/garage on 1 acre lot and less than 45 min. to Missoula. Needs clean up, fix up and a lot of TLC. Great investment or just a nice family home. Seller needs to relocate for health reasons. Will look at all offers. Asking \$124,900.

B.J. Martin - Broker

Phone (406) 677-3180 Fax (406) 677-2734
e-mail martinsie@montana.com

HERITAGE Home Maintenance

Seeley Lake, Montana

(406) 677-3838 • (406) 677-3848 fax

We are now offering light duty home maintenance services.

Here are a few of the services we will be offering:

Winterizing • Door repairs • Window repairs
Flooring • Job clean up • Painting • Small "fix its"

If you have a repair or small home/property job,

(406) 677-3838 • P.O. Box 1356

KEN SCHMITZ

SEELEY LAKE, MT. 59848

Mike McMeekin SHERIFF Missoula County

A proven leader with
a distinguished law
enforcement career

PROFESSIONAL

- 23 years in the Missoula County Sheriff's Department, including:
 - Undersheriff since 2000 - appointed by Sheriff Doug Chase
- Training Officer, 14 years • Instructor at the Montana Law Enforcement Academy • Captain, Lieutenant, Detective, and Patrol Deputy
- 7 years in Lincoln County Sheriff's Office, including 2-1/2 years as Sheriff of Lincoln County.
- Viet Nam Veteran - 4 years with the U.S. Air Force

A PROVEN LEADER

- 1991 Standoff with Russian Immigrant: Mike was the chief hostage negotiator during this 8-day standoff. Not a shot was fired.
- Alberton Train Derailment and Chlorine Spill: Mike was a major player with the emergency response team
- Noted as a team leader in years of fostering inter-agency cooperation, and helped balance the budget and bring the new detention center back from a projected deficit.

Please vote on
Tuesday, June 4.

Paid for by Mike McMeekin for Sheriff / Contee,
Dusty Deschamps, Treasurer,
246 St. John's Drive, Lolo, MT 59847

NOTICE OF ELECTION ON
AN INCREASE IN PROP-
ERTY TAXES OF UP TO
TWO (2) MILLS FOR SUP-
PORT OF THE HISTORICAL
MUSEUM

Notice is hereby given that pur-
suant to a resolution of the Board
of County Commissioners adopted
March 18, 2002, the question of an
increase in property taxes not to

exceed two (2.0) mills for support
of the Historical Museum will be
submitted to the registered voters
of Missoula County, MT at the
election to be held on June 4, 2002.
The polls will be open at 7:00 a.m.,
and will continue to be open until
8:00 p.m. on Election Day at all
polling places.
The absentee ballots may be re-
quested in writing from the County
Election Administrator during a
period beginning 75 days before
the day of election and ending at
noon on the day before the elec-

tion. A ballot shall be sent to elec-
tors submitting valid requests af-
ter the official ballot is printed.
The text of the resolution sub-
mitting the question to the electors
is set out below.
Dated this 15th day of April, 2002.

Vickie M. Zeier, Election Admin-
istrator
Missoula County

RESOLUTION 2002-028
SETTING DATE FOR HIS-
TORICAL MUSEUM MILL

LEVY VOTE AND FIXING
THE FORM OF THE BALLOT

WHEREAS, the Board of County
Commissioners received a request
from the Friends of the Historical
Museum to submit to electors the
question of a levying tax not to
exceed 2 mills for the support of
the Historical Museum, and
WHEREAS, on March 13, 2002,
after due public notice, the Board
of County Commissioners con-
ducted a public hearing on the re-
quest to submit to the electors a 2
mill levy for the support of the
Historical Museum, and
WHEREAS, based on the testi-
mony of those persons appearing
at the hearing, it appears to be in
the public interest to submit the
question of whether a levy of 2
mills for the support of the His-
torical Museum should be author-
ized to the electors.

NOW, THEREFORE, BE IT RE-
SOLVED the question of whether
a tax not to exceed 2 mills should
be levied for the Historical Mu-
seum be submitted to the voters at
the primary election to be held on
June 4, 2002.

BE IT FURTHER RESOLVED
that the question be submitted to
the electors in substantially the fol-
lowing form:

Shall Missoula County be autho-
rized to levy annually a tax not to
exceed 2 mills for the purpose of
supporting the Historical Museum
at Fort Missoula. Passage of this
proposal will subject a home with
a market value of \$100,000 to a tax
increase of \$4.77 per year and a
home with a market value of
\$200,000 to a tax increase of \$9.55
per year.

() FOR the 2 mill levy to support
the Historical Museum at Fort
Missoula.

() AGAINST the 2 mill levy to
support the Historical Museum at
Fort Missoula.

The Elections Administrator is di-
rected to place the question on the
June 4, 2002 Primary Ballot, to
give all notices of the election re-
quired by law and to take any other
actions necessary to submit the
question to the electors.
DATED this 18th day of March,
2002.

Missoula County Board of Com-
missioners
/s/ Jean Curtiss
/s/ Barbara Evans
/s/ Bill Carey
Attest
/s/ Vickie M. Zeier
Clerk and Recorder
Approved Form and Content
/s/ Michael W. Sehestedt
County Attorney's Office

Attend the Church of Your Choice!



Seeley Lake
Church Directory

Faith Chapel (Pentecostal Church of God)
Worship-10:30 a.m. Sunday School-9:30 a.m.
Hwy 83 North Phone-677-2220
Pastor-Gary Wayne

Seeley Lake Baptist Church
Worship-11:00 a.m. -Sunday School 9:45 a.m.
-Sunday Evening 6:30 p.m. -Wed. Bible Study & Prayer 6:30 p.m.
3116 Hwy 83 South Phone-677-2268 (Founded 1953)
Pastor-Bill Bogardus

Holy Cross Lutheran Church
Sunday Worship-9:00 a.m.
Pastor - Rev. Robert Benson -1655 Airport Rd.
Phone-677-2281 or 677-7677

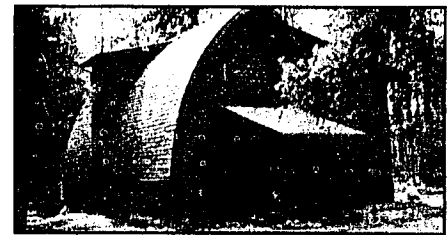
Living Water Catholic Church
Worship Mass: Sunday-11:30 a.m.
152 SOS Road
Ph: 677-2688 or 258-6815
Pastor-Father Ray Gilmore

Mountain Lakes Presbyterian Church
Presbyterian Church (U.S.A.)
Worship-10:00 a.m.
3292 Hwy 83 North Phone-677-3575
Pastor-Scott Anthony

Spirit of Christ Episcopal Fellowship
Worship-2nd Saturday of each month
of the Senior Center-5:00 p.m.
Phone-677-2905

Mission Bible Fellowship (Non-Denominational)
Worship-9:30 a.m.
Hwy. 83 & School Lane
Phone 677-2110
Pastor Ken Wutzke

1-800-800-4260
677-3337
GREAT BEAR PROPERTIES
LAZY PINE MALL
HIGHWAY 83
South End of Town
P.O. Box 569 • Seeley Lake Mt 59868
FAX 406/677-3060



Unique Home on Lynx Court

2090 sq. ft. 2 story cedar sided home at the end of the cul-de-sac on 1.24 acres. 4 bedroom, 1 1/2 bath home with many unique features. Main level includes a living room with tongue and groove ceiling and large beams, a hall bath with washer/dryer hook-up plus laundry chute, remodeled kitchen with pine and glass doored cabinets, slip-down family room with wall to wall windows and a mud room. Upstairs includes a large 16x20 room with sun room windows. Owner (listing broker) uses this room as a master but it would be a great studio or office. There is another large bedroom and 2 smaller bedrooms, all with cathedral ceilings. The full bath on the upper level has a greenhouse window. There is a large deck with stairs that lead to a hot tub, a small covered porch, a garden spot and a 16x16 outbuilding (not yet wired). Property is landscaped, road is paved, community water, electric heat (propane is on the road and can be pulled in). Owner is licensed real estate broker. \$149,500



Perfection and Affordable

2 bdrm., 1 bath, oak kitchen, living room, and large windows for view-
ing wildlife. 2 car attached garage, landscaped yard, city water. IM-
MACULATE! Priced to sell. \$117,000



Home, Creek, Park Like Acres

2200 sq. ft. home w/1500 sq. ft. walk out basement on 4.54 acres.
Beautiful wood interior, vaulted ceilings, open kitchen/living area, huge
covered decks, double car garage with covered walkways. So many
amenities. \$329,000

1.36 acre lot in Hillcrest Heights. Easy access on paved roads, nice level building site. Power, phone and septic approved. \$19,900
Phase 4, lots 47 & 52 - 4.21 acres total in an area of nice homes and good wells. Lots of trees and privacy. \$30,000
Convenient 1.53 acre timbered lot with easy access just off the paved road. Nice level building site close to the new golf course. The well is
in at 60 ft. with 30 gpm. \$29,900

Seeley-Swan
MEDICAL CENTER
The Seeley Swan Medical Center is staffed by **Cindy Gallea**,
Family Nurse Practitioner, and **Brett Hollis**, Family Nurse Practi-
tioner who will be seeing patients during the transition period.
They are supported by the Family Practice Missoula physicians.
Lar K. Autio, M.D.
Donald R. Nevin, M.D.
Terence M. Calderwood, M.D.
Seeley Swan Medical Center
3050 HIGHWAY 83 — SEELEY LAKE
Appointments available Monday-Friday: 9:00 a.m. - 5:30 p.m.
Please call 677-2277

Charlee Parker, Broker
Elinor Williamson Ellie Greenough
Kim Koppen

LOCATED on Hwy 83, Lazy Pine Mall on the Pond
greatbearproperties.com • email: info@greatbearproprties.com

Darcy's Hair Designs Locally Owned & Operated 406 677-2677
LARSON DISPOSAL Seeley Lake 677-2252
CHICKEN COOP & LOUNGE NOW Serving Breakfast, Lunch & Dinner
Rockinghorse Art & Antiques Open 10-5:30 Sat. May 26-28 110 Larch Seeley Lake
SEELEY LAKE LIQUOR STORE Seeley Lake located downtown next to post office
GOOD TIMES VIDEO & CLOTHING Seeley Lake 677-2140
Seeley Lake Pharmacy & Floral Seeley Lake 677-2424
NAPA AUTO PARTS Seeley Lake 677-2454
HERITAGE PLUMBING & HEATING Seeley Lake 677-3838

Seeley Lake Alpine Artisan's -- Saturday and Sunday, May 25 & 26, 2002

Loon & Fish Festival 2002

SATURDAY

Throughout the Day

Childrens' Art Table
Loon Society Table
Forest Service Table
Old Time Sawmill
(behind Community Hall)
Sale of Art, T Shirts & Raffle Tickets

Donna Love
Becky White
Bruce Johnson
Neil & Dixie Meyer

8:30 - 9:30 a.m.

Guided birdwalk by Sue Reel, Lolo National Forest
Wildlife Educator and Dr. Dick Hutto, UM Ornithologist
Meet at Seeley Lake Ranger Station

10:00-11:00

10:00-11:00

11:00-12:00

11:00-11:30

11:00-2:00

Bonnie Miller- Stained Glass
MT Fish, Wildlife & Parks - Hooked on Fishing (indoors)
MT FWP Hooked on Fishing (casting, outdoors)
Nancy Rittel - Fabric Origami

LUNCH - buy a Bob Korn hand thrown bowl of soup to benefit
The Food Bank

11:30-12:00

12:00-1:00

12:30

1:00-2:00

1:00-4:00

4:00

Pam Peabody - Doll Sculpture
Jon West - Bird Carving
Talk by Jim Stone of The Blackfoot Challenge
Donna Love - Loon Toons & Water Balloons (outdoors)
Bob Korn - Throwing on the Wheel
Community Hall closes for the day

7:30 p.m.

EVENING LOON PROGRAM BY LYNN KELLY
SEELY LAKE RANGER STATION



Buy a Loon & Fish T-Shirt

SUNDAY

Throughout the Day

Childrens' Art Table
Loon Society Table
Forest Service Table
OLD TIME SAWMILL
(behind Community Hall)
Sale of Art, T Shirts & Raffle Tickets

Donna Love
Becky White
Bruce Johnson
Neil & Dixie Meyer

10:00

Community Hall opens

11:00-1:00

Sandi Antonich Watercolor Painting

12:00-1:00

Talks by Anne Dahl (Swan Ecosystem)
and Tom Parker (Northwest Connections)

1:00-2:00

Cindy Torok Pencil Sketching

2:00-3:00


Peggy Meinholtz Building Parade Puppets from Scratch

4:00

Tenth Annual Loon & Fish Festival closes



Wilderness Gateway Inn Seeley Lake 677-2095
EMMA SEELEY LAKE 677-FISH
TAMARACKS Lake front cabins Seeley Lake 677-2433
CLEARWATER TOWING & REPAIR Seeley Lake 677-3670
ROVEROS PIZZA, GAS, HARDWARE & MORE Seeley Lake 677-2445
WOLD'S VALLEY MARKET Seeley Lake Hometown Market 677-2121
Double Arrow Lodge LODGING, RESTAURANT Breakfast, Lunch & Dinner 677-2777
Glens Automotive Seeley Lake 677-2141
1st VALLEY BANK Seeley Lake 677-2464



(800) 406-6012
Seeley Lake
677-2252

LARSON
DISPOSAL

Seeley Lake
677-2252

CHICKEN
COOP & LOUNGE

NOW Serving
Breakfast, Lunch & Dinner

CLEARWATER
TOWING & REPAIR

Seeley Lake
677-3670

SEELEY LAKE
LIQUOR STORE

Seeley Lake
located downtown
next to post office

DOUBLE
ARROW
POTTERY

by Marion Burmeister
Seeley Lake
677-2817

SEELEY LAKE
PHARMACY
& FLORAL

Seeley Lake
677-2424

GOOD
TIMES

Open 7 days
677-2140
Seeley Lake

1-STOP & BACK
DOOR LOUNGE
& CASINO

Seeley Lake
677-2004

FARMERS
INSURANCE
GROUP

Billie Sytsma
Seeley Lake
677-3090



TAMARACKS
Lake front cabins
Seeley Lake
677-2433

Pathfinder
News

pathfinder@montana.com
• Seeley Lake •
677-2022-6772174

GLEN'S
AUTOMOTIVE

Seeley Lake
677-2141

ROVEROS

PIZZA, GAS,
HARDWARE & MORE

Seeley Lake
677-2445

BOOKS
YARN & MORE

Seeley Lake
677-3300
Books, Crafts, Yarn etc.

TIMBERLINE
BUILDING
MATERIALS

Seeley Lake
677-2595

8th Grade Graduation - Seeley Lake Elementary Wednesday, June 5th, 2002, 7 p.m.

Front row: Laura Love, Amy Varner, Dana Friede, Stevie Johnson, Bruce Davis, Beau Maciag.

Middle row: Niki Minjares, Chase Stoeger, Andy Troutwine, Levi Kelley, Cody Thompson, Chris Anthony, Erik Rose, David Whipple.

Back row: Mrs. Rammell, Kyle Darrow, Sam Bernstrauch, Phillip Bedard, Treay Trevino, Andrew Meissner, Daniel Wisner, Logan Swanson, Jessa Linford, Mike Stewart, Jon Phipps, Stormie Kelley.

Not pictured: Joel Cahoon, Chris Esparza, Josh Peterson, Cody Rowe, Katie Williams, Lindsay Newell.



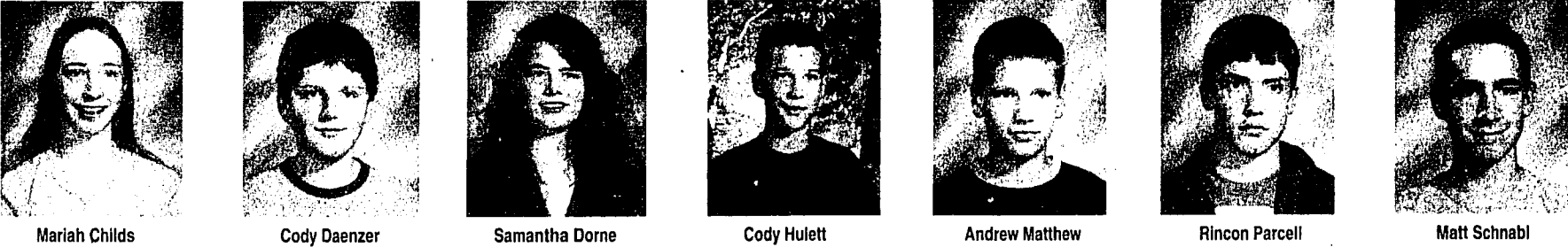
PROGRAM

Processional
Welcoming
Song
Movie Presentation
Presentation of Flowers

Drum Solo
Presentation of Awards
Presentation of Diplomas
Closing
Recessional

Andrew Meissner
Mrs. Jenny Rammell
Mr. Bill Hyde, Superintendent
Mr. Bart Peterson, Mr. Loren Rose, Mr. Mark Williams, school board.

Swan Valley School - 8th Grade & Kindergarten Graduation
Thursday, May 30, 2002 - 7 p.m.



Mariah Childs Cody Daenzer Samantha Dorne Cody Hulett Andrew Matthew Rincon Parcell Matt Schnabl

Kindergarten Class



KeAnna Conley Katie Hood

Kindergarten Processional
8th Processional
Welcome
"Star Spangled Banner"
"First Grade, First Grade"
Presentation of Kindergarten Diplomas
Salutatorian Address
Class History
Class Prophecy
Class Wills

"Children's March" by Edwin Goldman
"My Sacrifice" by Creed
Kitty Logan
sung by Sarah Thomas
sung by Kindergarten Class
Kitty Logan, Principal
Ronnie Matthew, School Board Chairman
Mariah Childs
Rincon Parcell
Cody Hulett & Matt Schnabl
Cody Daenzer & Andrew Matthew

Special Recognition
Valedictorian Address
Graduation Address
Awards
Presentation of 8th Diplomas
Multimedia Presentation
Recessional
Kindergarten Teacher
Eighth Grade Teacher

Mariah Childs & Samantha Dorne
Samantha Dorne
Colonel Robert E. Parcell
school staff
Kitty Logan, Principal
Ronnie Matthew, School Board Chairman

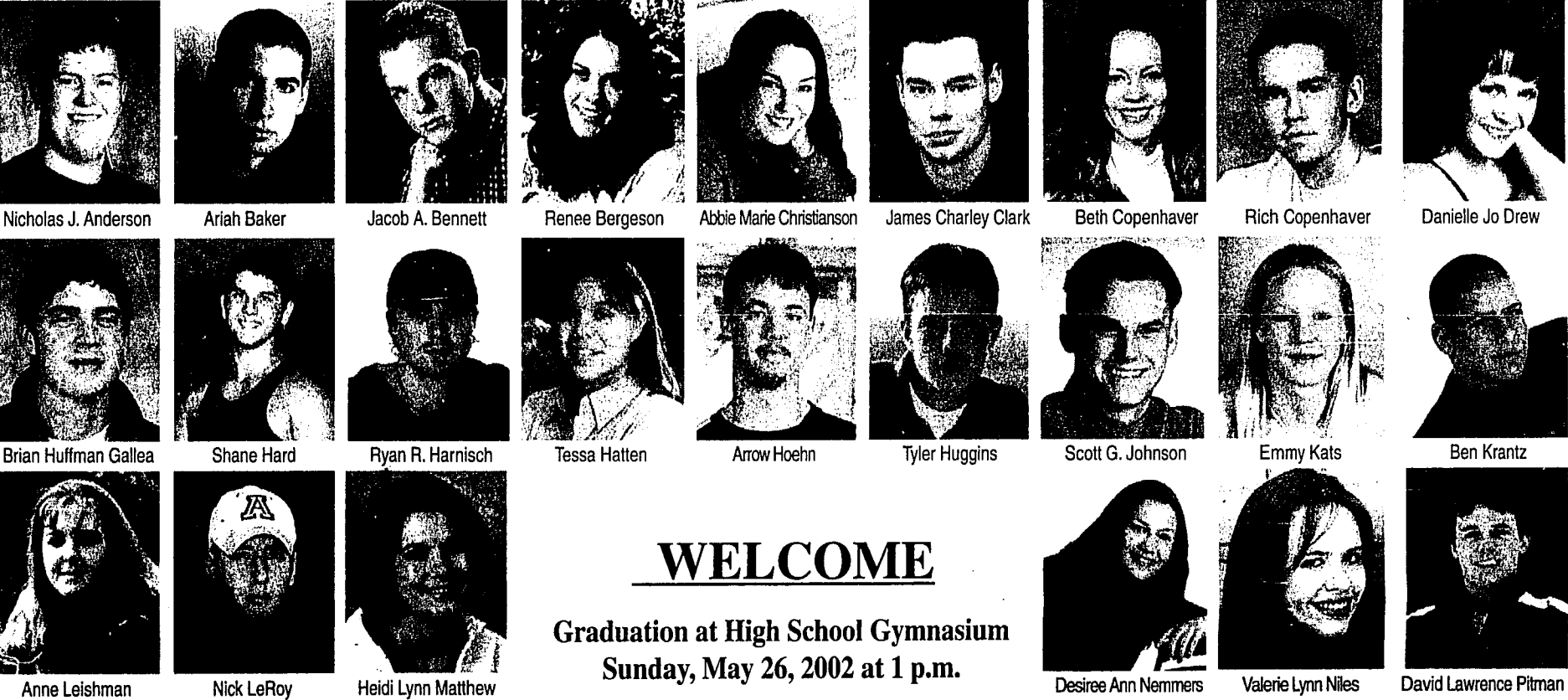
"Alive" by POD
Ruth Korn
Penny Thomas

Kindergarten Class



Johnny Parcell Anna Stevenson

Congratulations 2002 Graduates
Seeley Swan High School



Nicholas J. Anderson Ariah Baker Jacob A. Bennett Renee Bergeson Abbie Marie Christianson James Charley Clark Beth Copenhaver Rich Copenhaver Danielle Jo Drew

Brian Huffman Gallea Shane Hard Ryan R. Harnisch Tessa Hatten Arrow Hoehn Tyler Huggins Scott G. Johnson Emmy Kats Ben Krantz

Anne Leishman Nick LeRoy Heidi Lynn Matthew

Desiree Ann Nemmers Valerie Lynn Niles David Lawrence Pitman

WELCOME
Graduation at High School Gymnasium
Sunday, May 26, 2002 at 1 p.m.

Processional
Welcome
"Born to Fly"
Words & music by Anglea Williams and Cobralee Ruth
Speakers
Presentation of Roses
"Butterfly Kisses".....Bob Carlisle
Academic Excellence
Presentation of Diplomas
Farewell Presentation
PowerPoint Presentation
Recessional

SSHS Band
Heidi Matthew, Salutatorian
Sarah Evans
Mrs. Toni Sexton and Mr. John Fisher
Class of 2001
Mr. Anthony Gallegos
Mr. Anthony Gallegos, Mr. Larry Johnson
Mary Jean Yiengst
Class of 2002
SSHS Band
Mr. Bob Green

Class Officers:
Abbie Christianson
Rich Copenhaver
Anne Leishman
Heidi Matthew
Angela Williams

President
Vice President
Secretary / Treasurer
Class Representative
Class Representative

* PLEASE JOIN US FOR REFRESHMENTS IN THE CAFETERIA.

Not pictured
are graduates
Logan Rammell and
Lyle Thompson

Mary J. Yiengst

WILDERNESS
GATEWAY INN

Seeley Lake
677-2095

NAPA
AUTO
PARTS

Seeley Lake
677-2454

SANITATION
SOLUTIONS

Seeley Lake
677-2400

Terry J. Sheppard
Certified Public
Accountant

793-5718

Darcy's
HAIR DESIGNS

Locally Owned &
Operated

677-2677

JOHN H. SYTSMA
General Home & Auto

Seeley Lake
677-3006

Stage
Station

Gift items for the
Graduate!
Jewelry, Clothes,
Specialty Gifts & more.
Open 7 days! 9:30-5:30

HERITAGE
HEATING & PLUMBING

Seeley Lake
677-3848

POP'S
PLACE

Family Restaurant
Breakfast, Lunch &
Dinner • 677-2970

DOUBLE
ARROW
LODGE

Dinner, Lounge
Lodging, Sunday
Brunch

677-2777

WOLD'S
VALLEY MARKET

Seeley Lake
Hometown Market

677-2121

1st VALLEY
BANK

Seeley Lake
677-2464

MOUNTAIN
LAKES
REAL ESTATE

Seeley Lake
677-0303-677-2457

The Filling Station
Bar, Restaurant
& RV Park

Breakfast, Lunch &
Dinner • 677-2080

PLUM
CREEK

Timber Industries
• Seeley Lake •
677-2320

EMILY R.

Seeley Lake
677-FISH

Students recognized at Spring awards banquet

Photo highlights by G. Noland

Seeley-Swan High School 2002 Scholarships and Awards

Danielle Drew - Blackfoot Telephone Inc. Scholarship, First Valley Bank Scholarship

Brian Gallea - Board of Regents Tuition Waiver, Centennial Gold Scholarship, Metallurgical Engineering Scholarship, Rotary Club Scholarship, William George King Memorial Scholarship, U.S. Air Force Math & Science Award, Army Reserve Scholar-Athlete Award, U.S. Marine Corp. Scholar and Athlete Awards

Heidi Matthew - Missoula Electric Scholarship, William J. Gallagher Scholarship

Desiree Nemmers - Lions Club Scholarship

Scott Johnson - Cliff Nelson Scholarship

Mary Yiengst - Missoula County Scholarship Fund

Emmy Kats - Missoula County Scholarship Fund, Cliff Nelson Scholarship

Abbie Christianson - Army Reserve Scholar-Athlete Award, U.S. Marine Corp Athlete Award

Lindsey Evans - Music Award
Varsity Letter - Golf - Brian Gallea, David Pitman, Nathan Love, Andrew Rose, Tanner Mar-

Varsity Letter - Band - Ben Stratton, Lindsey Evans
Varsity Letter - Track - Abe Madinger, Riley Devins, Cody

Varsity Letter - Track - Abe Madinger, Riley Devins, Cody



Abe Madinger, a junior, receives a track letter. Madinger won first place in the Western B Divisional track meet high jump event when he cleared 6-4. He tied for second place in the pole vault at 12-0.



Beth Copenhaver applauds her other track and field teammates as she is recognized for her accomplishments. The senior finished the Western B Divisional with a second in the 400, third in the 300 hurdles, and fifth in the 200, and goes to the state meet this weekend.



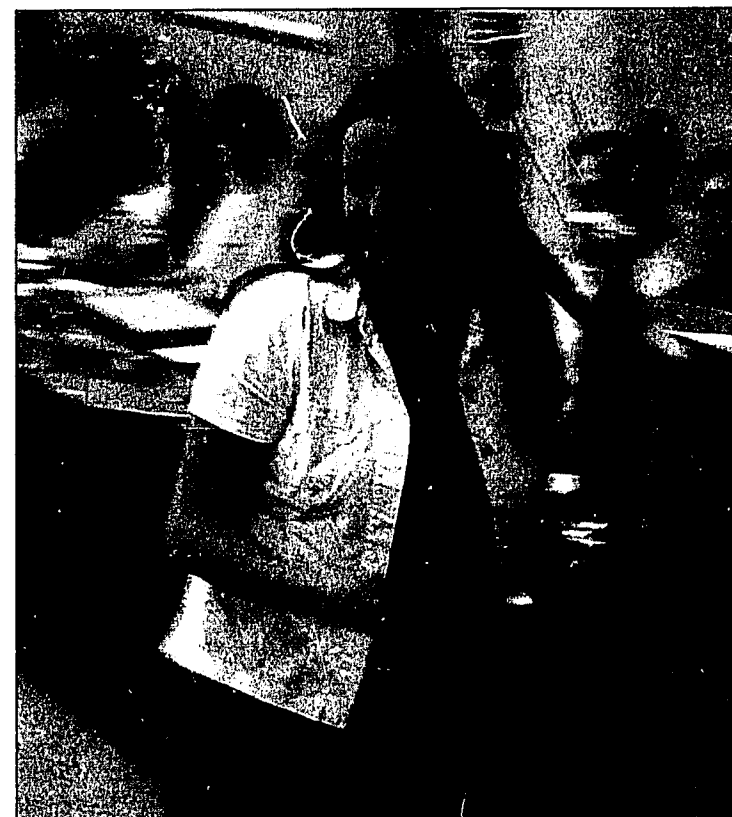
Brian Gallea is congratulated by coach Shawn Holmes. Gallea, a top scholastic student also, received several scholarships including the Army Reserve Scholar-Athlete award and the same award from the Marine Corp.



Ben Stratton, SSHS freshman, is congratulated by Bob Green, music director, for his district superior rating and state excellent ratings for his trombone solo.



Ramsy Hoehn, SSHS junior, was named the school's best actor by Michael Johnson, drama instructor. Sarah Thomas and Sierra Parcell were named the best actresses.



Abbie Christianson receives the U.S. Marine Corp Athlete Award. She received the Scholar-Athlete award from the Army Reserve. Abbie finished third in the Western B Divisional javelin event last week and goes to state this weekend.



Coach Les Gordon, left, congratulates his ladyhawk golf team that finished fifth in the State B Tournament last week. Team members were Jamie Adams, center, Hayley Blackburn, Sadie Linford and Karen Gehrke



Lindsey Evans is congratulated by music director Bob Green for her top Superior ratings at both the district and state musical festivals for her clarinet solo.



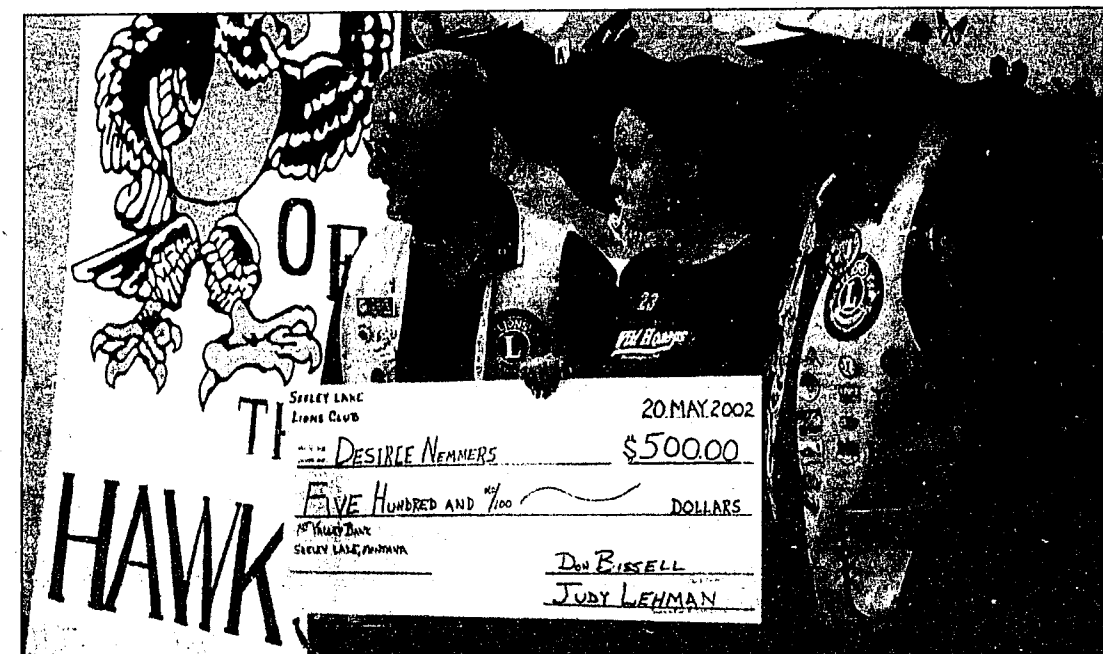
Rett Parker, right, and SSHS principal Tony Gallegos share a laugh at the awards banquet Monday night when Parker was recognized for the six years he's served as trustee representative on the Missoula County High School board for the Seeley Swan area. Parker is being replaced by Debbie Dupree.



Larry Johnson of the central Missoula County High School office shared his appreciation of Rett Parker's service over the years as trustee from this area.



Kevin Stroh, SSHS track coach, commended his track athletes, 10 of which are going on to the state tournament this weekend.



Tom Lehman, left, and Gary and Cheryl Lewis at right present Desiree Nemmers with the Seeley Lake Lions' Club first ever \$500 scholarship to a graduating senior.

Montana Lakes
Real Estate
(406) 677-0303

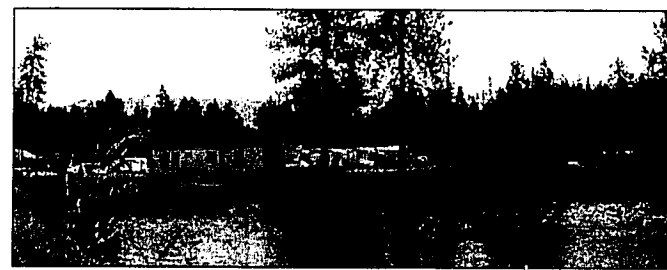
Laurie Darrow
Broker/Owner

Mark Darrow,
Sales Associate

PO Box 395
Seeley Lake, MT 59868

Downtown in the Filling Station Mall
 email: mtlakes@blackfoot.net • website: montanalakesrealestate.com

Montana Charlie's LLC Bar and restaurant.
 3300 Sq. Ft. 3.88 acres, menu and liquor license
 and incredible views! **\$350,000** Seller may carry



RV park-9-Unit Mobile home park on the Clearwater river. 2 acres +/-, \$150,000 3 bdrm home on Double Arrow Ranch: 4.86 private acres. **\$165,000**

2 bdrm, 1 bath cabin.
 A great hide-a-way!

\$99,000



Lake Front on
 Seeley Lake!

\$315,000



Smith Creek
 runs through
 this 60.20
 Acres in the
 Swan!
 4.7 miles to
 the Bob
 Marshall

\$595,000



3 bdrm, 1.5 baths,
 1.08 acres.

\$105,500

Reduced! 4 bedrooms, 2.5 baths, shop/garage, borders FS,
 no covenants! **\$145,000**
 Drew Creek cabin! **\$109,000**

HAMILTON ENTERPRISES

Accredited Stewardship Logging Professionals
 Heavy Equipment Hauling
 General Logging*Road Building*Forest Stewardship
 Daniel Hamilton Travis Hamilton
 (406)754-2445
 Cell (406)239-1340 Cell (406)261-8306
 Salmon Prairie Rd*Swan Valley*MT*59911

Loon & Fish Festival running on 10 years

by Peggy Meinholtz
 Publicity Chairman

This Memorial Day Weekend, Alpine Artisans invite the public to help them carry on the many traditions developed over ten years of The Loon and Fish Festivals in Seeley Lake.

This year's Loon and Fish Festival offers two days filled with nature walks and talks, arts and crafts demonstrations, children's art activities and games, a Bowl of Soup Benefit lunch all centered around an Arts and Crafts Show and Sale featuring original work by area artists.

Most activities take place at the Seeley Lake Community Hall on Highway 83. Admission is free.

Doors at the Community Hall will be open from 10:00 a.m. to 4:00 p.m. on Saturday and Sunday May 25 and 26, but early birds can begin their activities at 8:30 a.m. Saturday with a guided bird walk through a riparian area rife with bird life.

Sue Reel, Lolo National Forest Wildlife Educator, and Dick Hutto UM Ornithologist will meet participants at the Seeley Lake Ranger Station Highway 83 north of town.

This husband and wife team will help them spot birds ranging in size and color from Rufus Hummingbirds, to Yellow Warblers, to Sapsuckers, to Loons. They will also help match songs to birds and explain the natural history of some species spotted on the trail.

The Community Hall schedule includes both indoor and outdoor activities.

All day indoor events include the sale of pottery, paintings, and other art made of fabric, paper, wood, iron, and



Organizer/artists with Forest Service's Loon and Art for sale at Loon and Fish Festival in Seeley Lake. Left to right are Joyce Bissel, Cindy Torok, and Donna Love. Platter is by Bob Korn, vase by Marion Burmeister, and Rock art by Lynn Johnson. —G. Noland photo

rock.

There will also be sales tables for this year's T-shirts, tickets for the quilted wall hanging raffle, and information tables manned by the Loon Society, the Forest Service and 2 Valleys Stage.

Indoor demonstrations on bird carving, fabric origami, stained glass, parade puppets, doll sculpting, pencil sketching, water color painting, and pottery throwing, are scattered throughout the two days.

There will also be talks by the Blackfoot Challenge, Swan Ecosystem, and Northwest Connections. Neil and Dixie Meyer will demonstrate their old time sawmill out doors both days.

Fish Wild Life and Parks start indoors with their Hooked On Fishing program then move out doors for casting. Donna Love begins each day with her children's art table, then moves out doors in the afternoons for

the Loons Tunes and Water Balloons children's activities.

At 11:00 on Saturday soup bowls, thrown by Bob Korn and decorated by several Alpine Artisans, go on sale inside. After choosing a bowl, folks can get it filled with soup donated by local restaurants and head out to tent sheltered picnic tables to enjoy their lunch.

All proceeds from the Soup Bowl Benefit go to the Seeley Lake Food Bank.

The traditional evening program on Loons by Lynn Kelly, (the "Loon Lady") takes place at 7:30 p.m. at the Ranger Station.

Kelly, who has been watching out for Loons in the Seeley/Swan Valleys since 1985 will show slides and give insights into the behavior of Loons that she hopes will inspire a sense of wonder towards the birds and lead to greater appreciation for them.

Seeley Lake Pharmacy & Floral, L.L.C.

(406)677-2424 * FAX (406)677-3333

LOON & FISH

FESTIVAL SPECIAL

SELECTED GIFT ITEMS

20% OFF

GRADUATES

STOP IN FOR A FREE

CARNATION

CUT & WRAP

CONGRATULATIONS!

SIDEWALK SALE

THIS WEEKEND

FRIDAY 9:00-5:30

SATURDAY 9:00-3:00

TELEFLORA PRODUCTS, CLOSEOUTS,
 HOUSEHOLD ITEMS, APPLIANCES
 AND MORE!!!

visit our website: seeleylakefloral.com

Village Candle Scent of the Month: 'Oranges & Cantaloupe'

Please Pause For Pets and Paws

Paws Up

We made our goal, thanks to all of you out there! Our drawing will be May 21st. Drawing will be done by Dr. Cross after all appointments. I am insisting he have a sack over his head while drawing, but not sure he will go along with that!

Paws Up

to Linda, Paydon and Pat Holt of the Montana Pines Hideaway for your generous support and nice card and words. We need that!

Paws Up

to all of you who used our program to spay and neuter. At this point it appears we will have funds left over. Should you need help with medical or other pet problems, please call. Our funds are held just to help people with their pet's problems. Your name is confidential!

Paws Up

to Hank and Sandy Sommerdyke, for the memorial in the name of their beloved cat Snuggles, who was helped to start his journey to The Rainbow Bridge while held in loving arms.

At The Rainbow Bridge

The grass was lush and green, the sun was warm and bright, and as always, there was camaraderie among all the little dogs, cats, horses and other special animals, for this was where they all waited for their special people. This was The Rainbow Bridge.

Some were watching the cats as they chased the pretty butterflies, some were splashing in the stream of running water which glistened like diamonds, some of them watched Elsie ride her motorcycle, while others were just sitting together enjoying each other's company.

Then someone sat up straight as if to listen, which made all stop what they were doing and look toward the path coming toward the Bridge. Then the music drifted faintly over all. The song that was playing was "I love you a bushel and a peck and a hug around the neck." There was excitement throughout. "Can you see? Who is it?" Freckles asked. The mist cleared and there stood Snuggles the Cat, and such a handsome cat at that. Kashena stood and asked for silence, and spoke. "Misty, will you and Kalahari handle the greeting?" Snuggles reached the Bridge with Misty and Kalahari, urging him to come forward. This cat was a special cat, they could tell. When Snuggles reached them, he put his arms around both and gave them a hug. All the animals laughed, for amongst them they had a cat who gave hugs. "Yippee" they all sang out. "Come," Misty said, "and tell us about yourself and your family." Snuggles felt so good and it was so beautiful here. He felt loved as he had on earth with his family. Snuggles began, "I was found when I was young, but the lady who found me, her cat did not like me, so I was given to the Sommerdykes, the best thing that could happen to a cat. I loved my family and I would always give hugs and snuggle, hence I got my name. I loved everybody and everything. I especially loved Tasha the dog. I was Tasha's pet. I lived a very loved life, but developed kidney failure. After a short period of vet care and love, I decided it was time to go, and my family let me go with love. I will always remember their love and will always be grateful, and our memories will always be with each other." There was silence, then there was clapping and barks and meows of happiness. Snuggles enjoyed the adoring looks. Misty and Kalahari then escorted Snuggles to the Memory Tree, where he was hoisted up by Brother to hang a star for Sandy and Hank. Snuggles gave Brother a hug as he put him down. There was happiness all around. Snuggles was happy, and there goes a butterfly. Snuggles wondered what it would be like to hug a butterfly and off he went, well and happy.

A Doggie Prayer

Dear God,
 Excuse me, but why are there cars named after the jaguar, the cougar, the mustang, the colt, the stingray, and the rabbit, but not one named for a dog. How often do you see a cougar riding around? We dogs love a nice ride! I know every breed cannot have its own model, but it would be easy to rename the Chrysler Eagle the Chrysler Beagle!

Elmer Williamson,

406 677-2174

PO Box 522

Seeley Lake, MT 59868

Max-profit #368168

Paws Up Safe Home

Renee Stowe

406 677-3435

PO Box 323

Seeley Lake, MT 59868



The Lazy Pine Place announces the opening of three new stores. The "Lazy Pine Place," operated by Sandi Irons, will feature crafts, furniture and antiques. Next door, the "Time & Again" shop, managed by Mary Stuart, will handle high quality re-sales. John Evans is opening Glacier Mountain Design with flooring, counter tops, etc. We also invite you to see Wes Newbold for home loans, visit Great Bear Properties, the Seeley-Swan Pathfinder, Seeley-Swan Physical Therapy, the YMCA and other occupants, including the Upper Deck, now owned by Jim and Karen Loconte and managed by Cori Drake.

The CRS makes a difference.
 It's the Ph.D. of real estate!

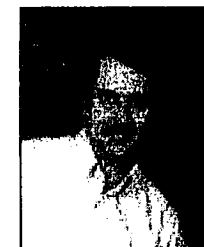


When you need a real estate agent, look for the CRS shield. It's the sign of experience, the sign of knowledge, the sign of success.

It stands for Certified Residential Specialist. It's the residential real estate industry's most advanced "degree."

It's your assurance that you're working with one of the top professionals in the business.

Work with the top 5% in the industry 100% of the time.



Scott Kennedy, CRS, GRI, CTG
 Real Estate Broker



Clearwater River Realty, Inc.
 Seeley Lake, MT 59868
 406-677-3000
 www.ClearwaterRiverRealty.com
 www.SeeleyBrokers.com
 Kennedy@blackfoot.net



Marcia Kennedy, CRS, GRI, CTG
 Real Estate Broker

Condon Area Senior Lunch

The Hungry Bear Steak House is serving lunch to Condon area seniors (60 and older) on Mondays and Thursdays at 1:00 p.m. Please call the Hungry Bear at 754-2240 for reservations prior to 5:00 p.m. the day before. This program is sponsored by Swan Valley Senior Services.

Thursday, May 23

Orange Juice, Cranberry Chicken, Rice, Broccoli & Cauliflower, Vanilla Pudding.

Monday, May 27

Pineapple Juice, Meat Loaf, Mashed Potatoes/Gravy, Roll, Peas, Cake



SEELEY LAKE, MONTANA 406-677-2140

Huge Memorial Day Sidewalk Sale

A Little or a Truck Load

Dirt Cheap!

Washed Rock • Cement Sand

Driveway Gravel • Drain Rock

Eko-Compost

RENT — ALL

Call 677-2200 • 165 Redwood Lane

GRACE'S GREENHOUSE

Time to start thinking of Spring!

If you have any **SPECIAL ORDERS OR QUESTIONS**

PLEASE CALL
754-GROW
OPENING MAY 25th

Save \$10.00

SAVE A LIFE!

Pick up your coupon for a \$10.00 (ten dollar) savings on a Child Safety Seat valid at the Check-up Events listed below. Your net cost will be only \$15.00. These coupons are provided by the Seeley Lake KISS Program. Always "BUCKLE-UP" WITH A KISS!"

It's time for your Check-Up!

Look for the Mobile Car Seat Check Up Van coming to your community.

4 out of 5 car seats are used wrong. Could yours be one of them?

To learn more about the safety of your child(ren), check out one of the following Safety Seat Check-Up Events in your area

For more information call:
Lonie Hutchison, Coordinator Missoula County SAFE KIDS/SAFE COMMUNITIES at 406-523-2880

SAFETY SEAT CHECK-UP EVENTS -- clip and save

Tues., April 9	1-4pm at Missoula City Fire Station #4 3011 Latimer St. (behind Western Door)
Sat., May 4	12-4pm at Community Medical Center Safe Kids Family Fun Day
Fri., May 24	1-4pm at University Motors
Sat., June 22	11-3pm at Lolo Fire Station

A limited number of child safety seats will be available at these events to replace unsafe seats. The seats will be purchased with grant funding from General Motors and the National SAFE KIDS Campaign.

Coupons available at these locations or call Alan Jeans at 677-3368:
Chiropractic Office of Dr Doug Smithson • First Valley Bank • Seeley Lake Fire Station
Coupon is valid only for safety seats installed in your vehicle at the check-up event.



Quilters Celebration Days May 29 - 30

May 29 - Luncheon at Double Arrow Lodge
Guest Speaker - Jane Quinn
Luncheon - \$16.00
Lecture only - \$5.00
(Please Reserve by Thursday, May 23, at 5 pm.)

May 29-30 - Autumn's Favorite Leaf printing
(with quilt as you sew log cabin)
Quilt class - \$50.00 - Jane Quinn will help you pick your fabrics on Wednesday afternoon, teach the leaf printing on Wednesday evening and teach the quilting class on Thursday, May 30.

Come see Jane Quinn's beautiful sample at
Deer Country Quilts

Senior Nutrition Program Menu

The following meals will be served next week promptly at noon at the Seeley Lake Senior Citizens Center. Reservations please - 677-2008. Call before 10:00 a.m.

Monday, May 27
Closed for Memorial Day
Tuesday, May 28
Baked Chicken
Wednesday, May 29
Baked Ham
Thursday, May 30
Pork Pot Pies
Friday, May 31
Baked Meat Loaf

Public Notice

Department of Natural Resources and Conservation Timber Sale The Montana Department of Natural Resources and Conservation, Clearwater Unit, is in the preliminary stages of preparing the Headquarters Timber Sale located in portions of the W 1/2 of section 2, N 1/2 NE 1/4 of section 10, T14N R14W, and section 36, T15N R14W. The Department would like public input regarding the proposal to harvest between an estimated 2-4 million board feet of timber, construct approximately 1-3 miles of new road and recondition up to 10 miles of existing road to access these areas. Those interested should address written comments to: Dave Marsh, Montana DNRC, Clearwater State Forest, 48455 Sperry Grade Rd., Greenough MT 59823-9635, Phone: (406) 244-5857. The comment period for this proposed project has been extended. Comments must now be received by 5:00 p.m. on June 17, 2002.

NOTICE OF ELECTION

Notice is hereby given that on Tuesday, June 4, 2002 the primary election will be held in the County of Missoula, Missoula, MT. All qualified voters may vote in this election.

The polls will be open at 7:00 a.m., and will continue to be open until 8:00 p.m. on election day at all precincts.

Absentee ballots may be requested in writing from the County Election Administrator during a period beginning 75 days before the day of the election and ending at noon on the day before the election. A ballot shall be sent to electors submitting valid requests after the official ballot is printed.

Sample ballots are available at the Election office.

Dated this 29th day of April, 2002.

Vickie Zeier,
Election Administrator
Missoula County



Are you tired of your local internet service being not so local?

Get connected with
Access Montana
a local name you can trust

100% local quality service you deserve!

Ronan Office
300 Main Street SW
Ronan, Mt 676-2777

Polson Office
201 Main Street
Polson, Mt 883-0800

Toll Free
1-888-676-1953

Chicken Coop & Lounge

The "Working Man's"
Breakfast & Supper
Club

Open For Breakfast
At 7:00 A.M.
7 days a week

Cafe Phone 677-2980
Lounge Phone 677-9214



BUSINESS DIRECTORY

Saddle Maker • Leather Works



CLEARWATER LEATHER CO.
Priced for the Average Person

Leather work & repair
Leather Tooling
Decker Pack Saddles
Saddle Repair
Purses, Belts, Holsters, etc.
Figures, Pictorial, Traditional
New & Repair All Pack Saddles
New Padding, Stirrups, Skirting, etc.

John ("Jack") Neibauer
406 677-3274
P.O. Box 1021 Seeley Lake, MT 59868

Pharmacy • Floral • Gifts

Seeley Lake PHARMACY & FLORAL

Bob Seefelt RPA
P.O. Box 575 • SEELEY LAKE, MT 59868
Phone 677-2424 FAX 406-677-3333
CARDS • GIFTS • FLOWERS • PRESCRIPTIONS • FILM
DRUGS • TOYS • COSMETICS

Printing & Graphics



111 West Broadway, Missoula
ph: 728-4210 • fax: 543-7574
Email: allegra@in-tch.com • www.allegra.net

Free consultation on all your printing needs.
Free pick up & delivery by Adrian Vandervliet, in the Seeley area every Thurs.

Building Contractor

Seeley Lake Enterprises

*Electrical and General contracting
*New homes, remodel, and repair
*15 years experience in all phases of construction
*Consulting and planning
*24 hour emergency service

Chris Neibauer General Contractor/Licensed electrician
Home... (406) 677-3139 Cell... (406) 210-1338

Complete Electrical Service

Creekside Electric Inc.
Complete Residential & Commercial
Wiring Services

P.O. Box 287 • Seeley Lake, MT 59868
Phone & Fax: 406 677-0050
Toll Free: 1-866-531-1091
Cell Phone: 406 210-1759
Email: Creekelectric@yahoo.com

Tools & Equipment Rentals

Rent-All
Tools & Equipment for Homeowners & Contractors
Monday thru Friday 8 a.m. 5 p.m.
Open Saturday 9-5
677-2200
165 Redwood Lane
Behind Timberline Building Materials

Plumbing, Heating Service

HERITAGE PLUMBING & HEATING L.L.C.
COMMERCIAL & RESIDENTIAL
HOT WATER HEATING
(406) 677-3838 • P.O. Box 1356
KEN SCHMITZ SEELEY LAKE, MT 59868

Ken Schmitz 677-3838 Seeley Lake, MT 59868

Logging

JRD Enterprises

DOZER & BACKHOE WORK
Land Clearing • Ponds
Logging
406-754-2717
Cell 406-677-4007
Fax 406-754-2225
JIM DAENZER
Condon, MT 59826

Pet Grooming / Boarding

Mountain View Boarding & Grooming
Ella Goodbread
Call 677-2572 for Appointment

Contractor • Builder

LAKE COUNTRY BUILDERS INC.
Custom • Residential • Commercial
Mark Williams 677.3448
Tim Tanberg 677.2841

Veterinarian Services

Swan Valley Equine Service

Leslie L. Strape, DVM
24-hour Mobile Veterinary Care
Reproductive Ultrasound, Lameness Dental, X-ray.
406 677-4130 406 837-1168

Hair Styling

Darcy's Hair Designs
Hair Styles for Everyone
PO Box 334 • Seeley Lake, MT 59868
(406) 677-2677

TIME & AGAIN RE-SALE SHOP

Now open for business in the Lazy Pine Mall. Good quality items are available for sale and consignments are welcome.

Phone 677-0600 for information.

Swan Valley Summer Mass Schedule changing

The Sunday Mass Schedule at Our Lady of Swan Valley in Condon will change on Sunday, May 26 (Memorial Day weekend) from 10:30 to 9:30 a.m. The 9:30 a.m. summer schedule will continue through Labor Day weekend. The church is located on Beck Road, between mileposts 47-48, one tenth of a mile east of Highway 83. Anyone who would like more information may call the church office at 754-2429.

WESTERN FUEL



PROPANE SALES, SERVICE AND INSTALLATION

3182 Hwy 83, Seeley Lake, Mt 59868

We Do More Than Sell Propane!
Complete Sales and Service • Furnaces, Ranges, Space Heaters

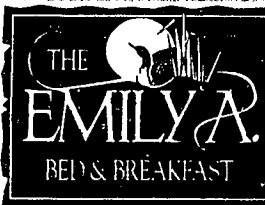
24-HOUR EMERGENCY SERVICE

Montana-Owned & Operated

406-677-0180 • 1-800-792-4246

BUSINESS DIRECTORY

Lodging - Bed & Breakfast



Marilyn & Keith Peterson
P.O. Box 350, Seeley Lake, MT 59868
406/677-FISH

Contractor • Builder

MORRIS BUILDERS
Brian Morris - Owner
MT Reg. # 12599

P.O. Box 1249 101 Rainbow Ct.
Seeley Lake, MT 59868 Double Arrow Ranch

Second Hand • Fax Service

**SEELEY LAKE
SECOND HAND STORE**
OPEN 9 am to 6 pm Mon thru Sat
Fax Service • Photo Copies
677-3622
Corner of Locust & Tamarack up High School Road

Sprinkling Systems

**Bob Sheppard
Mountain Sprinklers**
P.O. Box 129
Ovando, Montana 59854
406-793-5885
Free Estimates

Taxidermy

**Mountain Creek
TAXIDERMY**
Fine Wildlife Art
Located Woodworth Meadows
Rob & Raeann Henrekin
406 677-3502

Bookkeeping

**PROFESSIONAL BOOKKEEPING
AND SECRETARIAL SERVICE**
Affordable, Confidential, Experienced

Geannette Cebulski
Phone 406 677-3423

Trash Hauling

Don't get down in the dumps, let
Larson Disposal
..... do it for you
Seeley Lake, Montana 677-2252

Property Maintenance

**Swan Valley
PROPERTY
MAINTENANCE
SERVICES**
Since 1989

We provide:
Yard & Grounds Maintenance
Winterization of Cabins
Interior/Exterior Painting
Snow Removal
Handyman Services
Insured

Dave Stenhouse
P.O. Box 1023
Condon, MT 59826
(406) 754-2553

We can help you maintain your
home and vacation property

Gas • Convenience • Lounge

**The BACK DOOR LOUNGE &
24 Hour 1-STOP** with Credit
Cards

Call in orders for the following can be ready in 10 minutes.
Burgers and other sandwiches in 15 minutes.

Any item below \$2.75. Fries only \$2.50
Tenders • Deep Fried Vegetables • Onion Rings
Egg Rolls • Fries • Cheese Slicks • Buffalo Wings
Mushrooms • Gizzards

677-2004

Propane Service

GENEX Energy Partners

CHARLIE HAHN
Branch Manager
Propane Installation & Service

Hwy 83 North • Seeley Lake, Montana 59868
Office (406) 677-3656
Cell (406) 677-4185 • Fax (406) 677-3657

Electrician • Electrical Services

**Lakeview
Electric LLC**

Commercial & Residential
Licensed & Insured

Arield & Emily Waseem - (406) 677-3500

Our business is electrifying
Our prices are not shocking
Call us to remove your shorts.

Insurance

FARMERS INSURANCE GROUP

SEELEY LAKE
Corner of Hwy 83 & Locust Lane
Billie Sytsma, Agent 677-3090

Propane Service

WESTERN FUEL

Propane Sales, Service & Installation

3182 Hwy 83
Seeley Lake, MT 59868

We Do More Than Sell Propane!
Complete Sales and Service • Furnaces, Ranges, Space Heaters

24-HOUR EMERGENCY SERVICE

Montana-Owned & Operated
406-677-0180 • 1-800-792-4246

Taxidermy / Gunsmithing

**Clearwater
Taxidermy & Gunsmithing**
"THE CLEAR CHOICE"

Jeffrey J. Hipkins
PO Box 412
Seeley Lake, MT 59868
(406) 677-3499

PLEASE CALL FOR AN APPOINTMENT

Building Contractor

Linford Built Construction LLC
Ted Linford • Contractor • Builder

New homes • Additions • Remodels
Cabinets & Countertops
Montana Reg. & Insured
25 years of Building in the Valley
406 677-2891
P.O. Box 361 Seeley Lake, MT 59868

Accountant • CPA

TERRY S. SHEPPARD
Certified Public Accountant

P.O. Box 129
Ovando, Montana 59854 - 0129
(406) 793-5718

Log Hauling / Water Service

**Double Ott
Trucking**

Log Hauling & Water Service
3800 gallon water tender
with rear spreader & 3" pump

Kvande Anderson
Condon, MT 754-3063
Cell 253-5726

Woodworking / Wood Floors / Decks

**MARTY'S
WOODWORKING**

Wood Floors our Specialty
Maintenance and Decks
22 Years Experience

Marty Johnson (406) 360-7866

Legal Services

677-3006

**John Sytsma
Attorney**

• Real Estate • Land Development
• Divorce/Support/Custody
• Wills/Trusts/Probate
• Accidents/Personal Injury

Corner Hwy 83 & Locust Lane
P.O. Box 504
Seeley Lake, MT 59868

At Law

Electrical Contractor

Seeley Electric LLC

William J. "Bill" Yiengst
Master Electrician

Office Ph: (406) 677-3020
Cell Ph: (406) 239-3279

United We Stand

Email: SeeleyElectric@TheElectriciansGuild.
P.O. Box 306 Seeley Lake, MT 59868

Resort Lodging

**800-900-9016
406 677-2376**

**The Lodges
on Seeley Lake**

Brian & Kerry

P.O. Box 568 • Seeley Lake • MT 59868
www.lodgesonseeleylake.com

Contractor • Builder

**WILL KATS
CONSTRUCTION LLC**

Residential Carpentry
Established 1980
Montana Registration Number: 20064

6380 Woodworth Road • Greenough, MT 59836
(406) 677-3068

Contractor • Builder

ADAMS CONSTRUCTION INC.

Custom Homes Log or Frame
Additions & Remodels

PH: 406 677-3029 P.O. Box 10
Fax: 406 677-0053 290 Eagle Drive
Mobile: 406 239-3125 Seeley Lake, MT

Excavating

**GARY LEWIS
OWNER**
677-2200
677-2823
FAX
677-2965

DEER CREEK EXCAVATING, LLC

P.O. Box 523 • Seeley Lake, MT 59868

Chimney Cleaning

**BUCK CREEK
CHIMNEY SWEEPS**

LONNIE CASEBOLT 754-2726

Natural Health Products

**SPIRIT MOUNTAIN
HEALTH PRODUCTS**

TWIN LAB • NATURE'S HERBS • POWERTHIN • BIO CLEANSE
AROMATHERAPY • BATH & BEAUTY PRODUCTS

LEON & KRIS MARTIN HWY. 83
P.O. BOX 1124
SEELEY LAKE, MT 59868
Cell Ph 1-406-210-1344

Auto Body Shop

**Seeley Lake
Auto Body**

Collision
Repairs
Painting
Autoglass
Recreational Vehicles
Snowmobile Hood Repair
Insurance Approved

146 Larch Lane S. • P.O. Box 347 • Seeley Lake, MT 59868

**Randy Reintz
677-5010**

Photography

**Rhonda Malecha
PHOTOGRAPHY**

Weddings, Graduation, Family, Special
Events, Studio & Outdoor Sitings
(406) 677-3176

Reasonable Rates

Notices

Is someone hurting you? Call for help and confidential support. YWCA Missoula Pathways, 24 hour Crisis Line, 1-800-483-7858 or your local SSTEP program, 677-3177

Kindergarten registration for 2002-2003 is under way at Seeley Lake Elementary. A child who is five by September 10th is eligible. Stop in at the front office and pre-register with Suzie Teafoe, secretary.

To parents of Seeley Lake Elementary students: If you reside more than 3 miles from the nearest school bus stop, you are eligible for reimbursement for that portion of the mileage which is more than 3 miles. If you qualify, an Individual Transportation Contract form will be sent to you by calling the School Office at 677-2265, or stop in. Please complete and return the form to the school by June 10, 2002.

Help Wanted

Experienced carpenters, carpenter's helpers, 677-2891

Auto parts counter person, part time. Pick up application at Seeley Lake NAPA, 677-2454

Now hiring waitress/bartender & cook/bartender, Looney's, 406-244-9535

Receptionist-Progressive, fast paced real estate office has a receptionist position available. Desired qualifications include an individual who is self-motivated, organized & offers good people skills. Good working knowledge of office systems, equipment and Internet skills are a plus. Hours are Saturdays, 9-5, with possible additional seasonal (summer) hours. Please mail, fax or e-mail your resume to: Clearwater River Realty, Inc., PO Box 990, Seeley Lake MT 59868-Fax (406) 677-3400-E-mail info@seeleyswanbrokers.com.

Yard Sales

Neighborhood Sale: Sat. & Sun., May 25-26, 8am-7, 1 1/4 miles east of Clearwater Junction on Sperry Grade Road, watch for signs. Glassware, household items, collectibles, dolls, tools, tack, fishing & lots of misc. items. Cash only please.

Sat., 5/25, 9-5, 1554 Airport Rd. "Yeah, Don's cleaning out his shop/garage!" Lots of good stuff, including large tools & equipment, above ground fuel tanks, etc. & lots of misc.

Huge sale: Sat., Sun., Mon., May 25-27, 9-3, 2787 Hwy. 83, MM 11.5. Tools, furniture, drift boat, antlers, clothes, electrical supplies, toys, collectibles, pop-up camper, hobby stuff.

Multi-family Sale: Sat., May 25, 9-3, 270 Whitetail Drive. Kids clothes, toys, books, sporting

goods, antlers, household items. All Mary Kay inventory 40% off. Discounted Tupperware.

For Sale

Firewood, solid Doug fir, split & delivered, \$95/cord, 677-3142

8 acres available in the heart of Seeley Lake, 2 adjacent lots at 2.72 & 5.18 acres located near snowmobile & ski trailheads & schools. Amazingly private! Access Morrell Creek. \$50,500 & \$51,500, 677-0203, sale by owner.

Log home, guest cottages, 14 acres, 1/4 mile Swan River frontage, views, \$600,000, 406-239-7249

Land for Sale: 2 lots, side by side, in the heart of Seeley Lake. 5.18 ac. \$51,500 & 2.72 ac. with city water \$50,500. Amazing privacy and beautiful views, 677-0203

House for Sale: 1340 s.f. of living & 728 s.f. detached garage, 2 BR/1 BA, backs to common ground. 640 Grayling on Double Arrow, 677-0203

Extra nice '98 16x80 mobile home, 3 bd, 2 bath, oak & berber carpet throughout, \$27,900, 677-2895

40,000 watt generator, 3 phase, 220 & 110 volt, on portable trailer, all one unit, 677-2471 or 406-210-1140

By owner: 2 lots- 2 ac. riverfront lot-\$75,000; 2 ac. river access lot-

\$65,000; riverfront home on 2.5 ac., 3 BR, 2 bath-\$198,000. Call for showing, 677-2518

Peat, \$20 per pickup load, will load on Saturdays, 10-12, south end of town, 677-2518

4 tires, 245/75R16, good condition, \$25, 677-2280

King bedroom set-headboard, 2 night stands, dresser with mirror, armor-dark oak, beautiful! All for \$600, 754-2224

Seller Motivated: Reduced price for quick sale, 2 BR, 1 BA mobile on nearly 1/4 acre fenced, flat parcel only 3 blocks from Hwy. 83. \$33,000. Clearwater River Realty, Inc., 677-3000

Lake Canoe: Solo Mad River canoe, kevlar with wood trim, \$700. Call Brown Bear, 406-549-4896, ask for Pat. Will deliver to Seeley-Swan.

'86 Ford, 3/4 ton, SC, 2x4, 8' box, 1 ton rear end, 4 spd., 300, 6 cyl. \$2000 OBO; 4 tires/wheels, center caps white spokes with P235/85R16 radial mud/snows, new mounted/bal., fit Chevy/Ford 8 hole-\$400 OBO; '95 Arctic Cat Panther Deluxe 440, two-up, \$1500 OBO; '84 Honda V-65 Sabre, 1100 cc, liquid cooled, very fast-\$2000 OBO; '80 Scorpions, 2 each, 3 engines, extra parts-\$350 OBO, 754-2488, Holland Lake

Wanted

Retired couple wants to rent nice 2 or 3 BR, 2 bath home w/2 car garage in Seeley Lake area. No pets, no children, no smoking. 1 yr. lease. 941-637-7535

For Rent

Mini storage units available. 98 units to serve your needs. Clearwater Mini Storage, LLC, 677-3000

Lone Larch Mini-Storage-located on Spruce Drive. Easy access in Seeley Lake, 677-2889

Year-round weekly vacation rental on Seeley Lake. Rent now for summer vacations, 406-273-0570

Efficiency apartment, all utilities paid, \$285/mo + \$300 deposit, 677-3314

Now taking applications for A-frame cabin with loft & 2nd bedroom on DAR, available in May, \$600/mo + security deposit. Call Universal Martin Realty, 677-3180

Services

Will pawn, buy or auction most anything. Give me a call, Riley, 677-2997.

Auto Body & Paint & Glass
Approved by insurance companies. Call Sam Bolton, 677-2969 for estimates & information.

Horse boarding. No trainer, new ownership. Pasture or indoor stalls, heated indoor barn & arena. Horse-shoe Hills, 677-BARN

B & B Construction: New construction, remodeling & repairs, 677-3564

JNC Lawn & Yard Service: All your lawn needs including mowing, weed-eating, raking, fertilizing, and sod. Call 677-0001

Creative stenciling and design, using your ideas or mine to help define your style. Laurie Deniger, 677-2875

Need help? Will assist you with whatever is needed before, during or after you entertain in your home. Laurie Deniger, 677-2875

**MOUNTAIN CACHE
MINI STORAGE**

10x10 and 10x20 UNITS available
Units located at Mile Marker 44 1/2
Route 83, Condon, Montana 59826
Call 754-2387 or 754-2556 or
Stop by the Mission Mountains Merc.

STATEWIDE Classified Ad Network

The Pathfinder now offers you a one-step, inexpensive way to place advertising messages in 55 participating weekly and semi-weekly and 7 daily newspapers in Montana. The service offers you a circulation of 206,000 households (494,404 readers) for a low price of \$119 for a 25-word ad. Call 677-2022 for details.

BUSINESS OPPORTUNITIES
THOUSANDS OF BUSINESSES for sale by owners nationwide. If interested in buying or selling a business, call 1-800-999-SALE or visit www.gbws.com. Great Western Business Services. #359

A+ M&M MARS/NESTLE VENDING ROUTE. Unique Machine. Great opportunity! Prime locations available now! Excellent profit potential. Investment required \$10K & under. Toll-free 1-800-637-7444. #360

EDUCATION/INSTRUCTION
TRUCK DRIVER TRAINING. Complete programs and refresher courses, rent equipment for CDL, Job Placement Assistance. Financial assistance for qualified students. SAGE Technical Services, Billings, 1-800-545-4546. #361

FARM MACHINERY
SELF PROPELLED Grain Cart, A/C, 4 wheel drive, 600 horsepower, 6 speed Allison, 900 bushel tank, new duals. 40+ mph. \$30,000. (403)646-2835. #362

3R-72 GLEANERS: 1994 1260 Separator/hours, Victory pickup \$58,000. 1996 1078 Separator/hours, new rotor, rake-up pickup, \$70,000. 1996 1150 Separator/hours, rake-up pickup, \$67,000. 3 HONEYBEE 36' headers, \$17,000. each. (403)646-2835. #363

FINANCIAL SERVICES
CASH QUICK!! Receiving payments from property you've sold, injury settlement or annuity? We'll buy your payments for cash! Good prices, service. Creative Finance, Missoula. 1-800-999-4809. #364

NEED A COMPUTER? Credit less than perfect? You're APPROVED! Guaranteed! No credit check. Bad credit okay! Checking or Savings account required. (800)947-7988 Financing Alternatives. #365

FOR SALE
COLEMAN - FEE MANSION, DEER LODGE. 5/22/02, 12:33 AM

Historic register Bed & Breakfast. 4 levels, 2 apts, 5 guest BR. \$750,000. Solle Realty 406-846-1820 www.deertodgetmt.com. #366

FOR SALE - CIRCLE, MT. Long term, profitable Sinclair Service Station, includes buildings, fuel tanks, tools, equipment, inventory, and vehicles. \$260,000 possible payment plan, Dennis Wolff, Ag Land Realty, 1-800-856-2003, Home 406-485-2564, E-mail circens@midrivers.com. #367

YEARLING HORNED HEREFORD BULLS. Holden Line 1 breeding. Jack Holden, Valier, 406-279-3300 or Justin Lee, Choteau, 406-466-5474 or 406-466-5755. #368

FOR SALE - HOMES
NO DOWN PAYMENT? Problem credit? Own a new home without the big down payment. If you're motivated w/\$35K+income call American Home Partners at 1-800-830-2006. www.americanhomepartners.net. #369

HELP WANTED
AMERICA'S AIR FORCE. Jobs available in over 150 specialties, plus: *Up to \$18,000 enlistment bonus. *Up to \$10,000 student loan repayment. *High tech training. *Tuition assistance. High school grads age 17-27 or prior service members from any branch call 1-800-423-USAF or visit www.airforce.com. US Air Force. #370

DRIVERS AND OWNER OPERATORS. We are now expanding our Dry Van Fleet due to extensive customer base requirements. Owner operators qualify for free base plate and guaranteed mileage pay. Scheduled time off. \$1500 sign-on bonus. Excellent pay and benefits. Full medical benefits for family. 98% no touch freight. Our average length of haul is 1700 miles! Call the family of Bitterroot International Systems, LTD. 1-888-245-5977. #371

AVON Entrepreneur wanted. Must be willing to work whenever you want, be your boss, and enjoy unlimited earnings. Let's talk. 888-942-4053. #372

We can train you to make \$2000 per week! FARM & RANCH HEALTHCARE. 1-800-543-3553 agentinfo@farmranchhealthcare.com. #373

Drivers - DAVIS TRANSPORT. INC. 48 state flatbed. Flatbed training avail. Class-A CDL required. Good miles, good pay. Sign-on bonus for experienced flatbed drivers & O/O. 866-728-0120. #374

"ANNOUNCEMENT" Now hiring for 2002. Postal Jobs \$13.21-\$24.50/hour. Full benefits/paid training/no exp. necessary. Accepting calls 7 days (888)726-9083 Ext. 110. #375

SMART MOMS AND DADS work from home. Up to \$500-\$5000 a month PT/FT. Free information and training provided. 800-213-6425 www.tennmill.com. #376

FRONT DESK PERSON OR MANAGER. Full time permanent or possibly seasonal, remote Montana Resort adjacent to Glacier National Park; above industry pay plus FREE housing. Cook position also available. Contact Doug E-mail stay@izaakwalloninn.com. #377

MEDICAL SUPPLIES
ALL NEW ELECTRIC WHEELCHAIRS AND POWERCHAIRS (scooter type) at "No Cost" to you if eligible. Home delivered. Medicare accepted. Call 7 days, 9am-9pm, 1-800-869-0075. #378

MORTGAGES/CONTRACTS
WE LEND DIRECT. Save 1000's. Say goodbye to brokers and deal directly with the lender. We love commercial, retail, and investment properties. 500K max. Call Meridian (800)901-9301 or visit www.welenddirect.com. #379

STEEL BUILDINGS
STEEL BUILDINGS SALE: Versatile, dependable all steel. Looking for an excellent value and quality service? Call for free brochure. www.sentinelbuildings.com. Sentinel Buildings, 800-327-0790, Extension 79. #380

SEELEY LAKE ELEMENTARY SCHOOL MENU

Week of May 27, 2002

Monday, May 27	No School
Tuesday, May 28	Beef Nuggets
Wednesday, May 29	Stew
Thursday, May 30	Tomato Soup & Grilled Cheese Sandwiches
Friday, May 31	Burritos

There will be no school on Monday, May 27, for Memorial Day.
June & July birthdays will be celebrated on Wednesday, May 29

BLACKFOOT Telephone Cooperative

1221 N. Russell St. Missoula, MT 59808
For questions, call: (800) 649-4108

800-327-0790, Extension 79. #380

WOLD'S VALLEY MARKET

**Locally owned
& operated**

One Mile South of Seeley Lake
on Scenic 83

A member of Associated Food Stores, Inc.

SEELEY LAKE, MONTANA



Open 7 Days A Week!

Sunday — Thursday — 7 a.m. to 9 p.m.
Friday & Saturday — 7 a.m. to 10 p.m.

406/677-2121

WE ARE MEMBERS OF



SEE INSERT SPECIALS

Effective May 22, 2002 - May 28, 2002 • POSTAGE STAMPS • ATM MACHINE

The ESPRESSO BOOTH

Easy Access from Whitetail Drive
NOTE HOURS

Mon. thru Fri. 7:00 a.m. to 2:30 p.m.
Saturday & Sunday - 7:00 a.m. to 1:00 p.m.



Join the Coffee
Club. See Details
at the Booth

Soup's on ...

Lunch Menu for this week...5/23 to 5/29

Thursday: "Mary Catherine's" Cream of Tomato Soup

Friday: "Ranch Hand Ralph's" Barbecue Beef Sandwich

Saturday & Sunday: "Yes, we have no Soup...."

Monday: **MEMORIAL DAY - NO SOUP**

Tuesday: "Cheddar is Better" Baked Potato Soup

Wednesday: "Oodle of Chicken Noodles" Soup

***Weight Watcher points available for soups
and coffee drinks in the booth!**

~~ 11 a.m. until gone, 12 oz. bowl with roll - \$2.50

YMCA News Update on Activities

Summer Youth Programs: The YMCA Outreach will be offering several programs this summer: **Gymnastics and Tumbling Camp**, June 24-28-Tumbling (3-5 year olds), 9:00-10:00 am; Gymnastics (6 years old and up), 10:30-12:00. Both programs will be held at the Seeley Lake Elementary School Gym. The registration fee is \$20.00. **Outdoor Fun Camp**, July 8-12 (kindergarten-8th grade), 10:00-3:00 at the Swan Ecosystem Center in Condon. The registration fee is \$30.00. **Volleyball Camp**, July 8-12 (4th-8th grade), 9:00-10:30 at the Seeley Lake Elementary School Gym. The registration fee is \$20.00. **Lake Swimming Lessons**, July 15-24 (toddler to adults) at the Holland Lake Campground. The registration fee is \$25.00. **Tennis Camp**, August 5-16 (8 years & up) at the Seeley Lake Community Park tennis courts. The registration fee is \$20.00.

Family discounts are available for all programs.

Pre-registration for programs is recommended. Some programs have limited space available.

The Summer Program Guide and registration forms will be sent home the last week of school.

For more information please stop by the Seeley-Swan Outreach office in the Lazy Pine Mall or call 677-3330. Office hours are Monday, Tuesday and Thursday from 8:00 a.m. to noon, and Wednesday from 8:00 to noon and 1:00 to 5:00 p.m.

Special of the Week

"Lewis & Clark Latte"

Butter Rum & Almond flavor is mingled with freshly steamed milk & sweet espresso for a unique coffee experience.
Why do you think Lewis & Clark came so far?

Save .25 cents on any size this week!

"FYI"

The French were the first to innovate a crude espresso machine. The Italians then perfected this machine & became the first to manufacture it.

****Coming soon to the booth****

Fresh Garden Salads...Weekly Specials
Fast, Affordable, Yummy!



12 Pack 12 Oz. Cans

Coke
2 for \$7

Congratulations to our Seeley Lake graduates:

Cobralee Ruth and Shane Hard.

Good luck to both of you!



Cobralee Ruth



Shane Hard