

**Alpine Artisan Wine &
Chocolate Social and Art
Auction this Saturday**



**Senator Baucus speaking
at Town Social here Tues**

Seeley
Swan

PATHFINDER

<http://www.seelevswanpathfinder.com>

Vol XVI, No. 42

"Voices from the Valley"

Thursday, February 14, 2002

MONTANA HISTORICAL SOCIETY LIBRARY
255 N. ROBERTS ST.
HELENA, MT 59601-1514

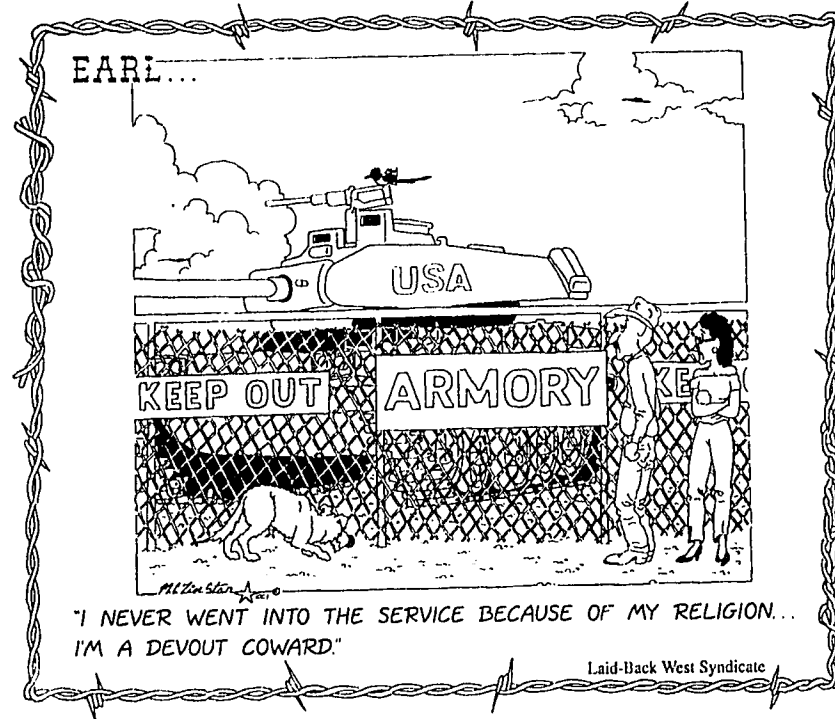
DOLLY VARDEN DR

HOMESTEAD CABIN

*Malfunction
Junction
on the Ranch?*

G. Noland photo

ergall@pathfinder@montana.com



"I NEVER WENT INTO THE SERVICE BECAUSE OF MY RELIGION. I'M A DEVOUT COWARD."

GARY NOLAND, EDITOR **PUBLISHER'S NOTICE** **MILLIE NOLAND, ADVERTISING**

Seeley Swan Pathfinder (ISSN 0894-2994, USPS 000-919) is published weekly by Pathfinder Press, Inc., Box 702, Seeley Lake, MT 59868 (ph. 406/677-2022). Area served is Seeley Lake, Swan Valley and neighboring communities. Distribution is by mail subscription (\$20 per year in Missoula, Lake or Powell County; \$25 per year elsewhere in U.S.) and by newsstand sales. Periodicals postage paid at Seeley Lake, MT. Postmaster: Send address changes to: Seeley Swan Pathfinder, P.O. Box 702, Seeley Lake, MT 59868-0702.

COMMUNITY CALENDAR

Community members are invited to submit dates, times and locations of events, meetings and other happenings. Submission deadline: Friday, 5 p.m.; call 677-2022

PUBLIC MEETINGS
S.L. Cemetery Bd, 1st Thur, 7pm, fire hall
American Legion, 2nd Fri, 7pm, Swan Valley Comm. Hall
Seeley-Swan Health Bd., 2nd Mon, 6pm, med. Ctr.
S.L. Elem Bd, 2nd Tues, 6pm
Swan Valley school Bd., 2nd Tues, 7:30pm, school library

WEEKLY MEETINGS:
Alcoholics Anonymous: (help for those with a suspected drinking problem)
-Condon: Faith Lutheran Church, every Sunday, 1pm
-Seeley Lake: Every Wed, 7pm, Living Water Catholic Church, on SOS Rd. For info: 677-3271 or 677-2892.
*Potomac: 406-244-5204
Alateen: (help for teenagers of alcoholic families) Hotline 677-2753

Overeaters Anonymous: every Thursday, 7pm, Faith Lutheran Church, Condon, 754-2371
Missoula County Commissioners Public Mtg, every Wed, Courthouse Annex, Room 201, Missoula, 1:30 pm.
T.O.P.S. Mtg, every Thurs, Mission Bible Fellowship bldg., Seeley Lake, 10am.

MONTHLY SERVICES
FAIM Outreach Specialist, 1st & 3rd Thur, 9:30-3, Seeley-Swan Med. Ctr.
Pinochle, every 1st Sat, S.L. Comm. Hall, 7pm; every 3rd Sat., Senior Citizens Center

DUMPSTER TRANSFERSITE: Winter hours (Oct-Apr) - Wed & Sat, 10am-4pm, 677-3809

SSTEP Crisis Help Line: 677-3177. Domestic violence, sexual assault, child abuse, community outreach & education
Food Bank: Tues, 12-4 pm, next to Multi-purpose Room, S.L. Elementary, 677-5025

Loving Hearts Thrift Store: Open Wed, 12:00-5:00, Sat, 11-3, 677-5683 (emergency 677-2110)
Seeley Lake Community Hall: For hall rental, call Cheri Thompson, 677-2454

LIBRARIES:
Seeley Lake Public Library (Seeley-Swan High School) Regular hours: Mon-Fri., 8-3pm (closed 11am-noon for lunch); Wed., 3-8pm; Sat, 10am-3pm. Story Time-Saturdays at 11 a.m.
Swan Valley Library (Condon) Tues, 11am-4pm; Wed, 11am-7pm; Fri, 11am-4pm
Family History Ctr.-LDS Church: Open Wed, 11am-3pm. Call 677-2642 or 677-2575.

EMERGENCY: Dial 911 if you live in Seeley Lake, Condon, Greenough or Ovando.
Swan Lake Residents: 886-2324 (Fire, QRU or Search & Rescue) or 1-406-752-6161 for Sheriff, Highway Patrol.

Editorial Comment

Chips . . . bits & pieces

We had a computer software glitch last week that caused some skipping in our mailing labels for that issue. If you didn't receive your issue last week, stop in at the Pathfinder office in the Lazy Pine Mall and pick up a copy. We seem to have the glitch under control this week.

Race to the Sky looks like an extremely competitive, yet probably one of the friendliest finishes yet. Running minutes apart over much of the course is Lincoln musher Harmony Kanavle, 27, and Helmville musher John Barron, 52. We say it's a friendly race because Harmony is engaged to John Barron's son, Jason, so they have to keep things friendly. But that doesn't mean they're giving in to one another. Harmony beat Barron into the Seeley Lake checkpoint by just one minute, according to reports on Jim Gallea's web site, www.ultimateitirod.com, and that sets the stage for a dramatic finish in the last 77 miles on back to Lincoln. The winner may be approaching there now, but alas, our deadline is passing. Tomorrow it will be history.

—Gary Noland

Tracking survey in Swan Valley

Join Northwest Connections' Wildlands Volunteer Corps in the Swan Valley on February 23 and 24 for a tracking survey to search for sign of lynx, wolverine, fisher and pine marten. Anyone 15-18 years of age may participate. We provide transportation, food, snowshoes and training; all Wildlands Volunteer Corps projects are free of charge. Registration deadline is February 18th. For more information, call Andrea-Stephens at 754-3185 or email nwc_edu@yahoo.com.

The Cloning Debate

(Tom Mitsoff is a longtime daily newspaper editor and syndicated columnist. His web address is <http://www.tommitsoff.com>.)

Just because you can do something doesn't mean that you should.

Every human being at one time or another is faced with this situation. Children whose mothers tell them not to eat sweets between meals face a choice when mom is out of the room and there are fresh cookies sitting on the countertop. In that nanosecond while the child decides what to do, he or she considers what the consequences are of being caught, what the consequences are of violating the parent's trust, and whether the possible consequences are worth that fleeting sweet sensation.

We face these choices every day, and they vary in the degree of their impact. They can affect the life of a single person or the path of an entire society.

Our society and our planet come closer every day to having to make some very difficult decisions about whether cloning of human beings should be allowed. Recently, a National Academy of Sciences panel said cloning human beings for the purpose of creating a child is medically unsafe and should be banned. The scientists also suggested that the proposed ban on human cloning should be reviewed every five years. Reconsideration of the ban should occur, the panel recommends, only if a new scientific review indicates that the procedures are likely to be safe and effective, and if a broad national dialogue on societal, religious and ethical issues suggests that reconsideration is warranted.

The debate comes closer to reality as Congress debates a cloning ban. The House of Representatives last year passed a bill which would outlaw cloning for both reproductive and therapeutic purposes, and President Bush supports the bill. While the Senate agrees with the ban on reproductive cloning, there is sentiment in that chamber to permit cloning human embryos for therapeutic and research purposes. That would fly in

the face of the House bill.

The therapeutic cloning procedure does not create completely formed human beings, but rather early-stage embryos from which stem cells can be harvested.

Also known as "master" cells, stem cells have the potential to develop into any kind of tissue — bone, blood, nerve, muscle, etc. Scientists therefore believe they may be able to use stem cells to grow any type of tissue needed for transplant. Since the new tissue would be genetically identical to the donor, it theoretically would not be rejected after implantation.

Sounds like a great idea, huh? Not if you believe that life begins at conception, it doesn't. If you think the abortion issue has divided the nation in the past few decades, just wait until scientists and doctors have the ability to safely recreate human life from the cells of already living humans.

That ability doesn't exist yet. Data on the reproductive cloning of animals show that only a small percentage of attempts are successful, many of the clones die during all stages of gestation, newborn clones often are abnormal or die, and the procedures may carry serious risks for the mother.

Remember Dolly the ewe, the first successful mammal clone that created such a stir a few years back? Bet you didn't know it took the scientific team 227 attempts before they got it right with Dolly. What happened to the 226 unsuccessful clones? How much did they suffer? How mutated were they? This is the type of question which would inflame animal rights organizations. It will inflame all mankind if and when full human cloning is ever medically viable.

We're not ready as a nation or a world to clone. The theological debates will dwarf even the ethical differences of opinion. Even when we are scientifically ready, and it will happen at some point in the future, it is highly questionable whether we should. Science is within reach of the proverbial sweet treat, and it will ultimately be up to lawmakers to decide how much, if any, to allow.

Grant application opportunity with Council

Funds are available through the Rural Community Assistance program to develop strategies and implement projects which result in community capacity building and long-term social, environmental, and economic sustainability.

Community applicants may apply for a grant to form community action teams to develop community plans, or to begin implementing projects identified in community plans.

Project proposals must show a broad community benefit that results in having a greater ability to improve itself economically,

socially, or environmentally. Or projects must show potential for economic development that results in long-term economic and environmental sustainability.

Innovative projects that both build sustainable economies and complement the management and conservation of natural resources will receive priority consideration for funding.

Proposals will be welcomed that are related to the Bicentennial of the Lewis and Clark expedition. These proposals should provide tourist services, promote activities among adjacent communities, deal

with local infrastructure to handle effects of the nation-wide celebration, or capitalize on the L celebration to help local economic diversification.

Interested individuals or organizations can see the details of the grant application package at the Seeley Lake Ranger Station (677-2233), or Books Yarn and More store.

Proposals or suggestions for the grant application on behalf of our community will be accepted at the next regular meeting of the Seeley Lake Community Council at 7 P.M., Monday February 18 in the Seeley Lake Fire Hall. The Council will facilitate selection of any proposals to be submitted from Seeley Lake and may provide some assistance for preparing the grant application. Proponents will be expected to be the chief push for getting the application completed and submitted by March 31. Anyone interested in the process should attend the Council meeting.

Ron Cox, Secretary
Seeley Lake Community Council
P.O. Box 30 Seeley Lake, MT 59868-0030 Public Meeting every 3d Monday at Fire Hall, 7:00 P.M.

23rd Annual Snow Joke coming up soon

The 23rd Annual Snow Joke Half Marathon will take place on February 23rd at Seeley Lake. The 13.1 mile footrace is sponsored by the Cheetah Herders Athletic Club.

Last year 128 entrants completed the event. Ben Rush of Kalispell was the overall winner in a time of 79 minutes 00, seconds (course record 68:10). Susanna Gaunt of Missoula was the first woman in a time of 92:09

(women's course record 85:25).

Division winners will be inducted into the Royal Order of Cheetah Rangers. If the fastest man or woman breaks their respective course record, the registration fee to a future race will be awarded.

Complete details are posted at www.cheetahherders.com.
Pat Caffrey
Race Director
ph. 406-677-2661.



February—Love Without Fear Month

Valentine's Day is a great time to tell someone you love them. It's also a great time to understand that love shouldn't hurt. Physical and mental abuse is not love, and it's against the law.
** One out of eight teenage girls is abused by her boyfriend. Many of them will be abused later by their husbands.
** Physical abuse gets worse as time goes on and the episodes almost always get more violent.
** Four women are murdered each day by their husband, boyfriend or ex after repeated abuse.
** Mental abuse causes the same disastrous fears and insecurities as physical abuse.
Try to make it a point to discuss violence with someone in your life who may be either in an abusive relationship or one who is perpetrating violent or verbal abuse against another. Talking about problems is the first step to a solution.

Seeley Swan Talk, Education and Protection
SSTEP-Your local domestic violence and sexual assault crisis and prevention program
Call 677-3177 and leave a confidential message.

Mark those calendars!! 2002 Fireman's Ball & Auction

March 2nd

at the Community Hall
in Seeley from 6 p.m. to whenever!!

Live Auction starts promptly at 7:30 p.m.

Tons of fun for the whole family!

ENTERTAINMENT**50-50 CASH RAFFLE**DOOR PRIZES**

Chat, Dance & Enjoy A Great Evening

Free admission: Spaghetti Feed

(and the sauce cooked by firefighters will be Officially JUDGED!)

WEATHER

DATE	HIGH	LOW	CONDITIONS
Feb 4	41	22	0.03" precip., 1.0" snow early a.m., then partly cloudy.
Feb 5	40	7	Partly cloudy.
Feb 6	46	13	Trace snow, partly to mostly cloudy.
Feb 7	42	26	0.07" precip., snow/rain/snow/rain/snow.
Feb 8	35	29	0.46" precip., 5.3" snow, steady wet snow all day.
Feb 9	40	20	0.12" precip., 1.4" snow, partly cloudy.
Feb 10	40	9	Partly cloudy.

Richard E. Taylor, Seeley Lake RD
Ph: 406-677-3913; fax: 406-677-3902
email: retaylor@fs.fed.us

Celebrate Valentine's Day at Deer Country Quilts

(because you're special!)

Tea

With goodies from the staff at Deer Country Quilts

Mystery Project: Felted Wool Friendship Heart Kits: \$20

February 14, 1-3 p.m.

Hungry Bear

Steak Seafood Pizza

Valentine's Day Wine & Cheese Party

Valentine's Day
(Thurs., Feb. 14)
Starting
at 5 p.m.

Bring a bottle of your favorite wine. Other wines & cheese will be provided.

Mexican Night
Starting Feb. 13

Steak House

Swan Valley, MT • Hwy 83 MM 38-39 • 754-2240

Breakfast 6 a.m. • Lunch 11:30 a.m. Dinner 5:00 p.m. Bar Opens at 4:00 p.m.

Local Mule Deer Numbers Holding Steady

by Mike Thompson
Whomever thought of the term "mule" as an apt descriptor for our western deer of the mountains and upland plains was not counting them from a helicopter at the time.

I know this not only because there was no such thing as a helicopter in 1817, when the species was first described for science. I know this also because there is nothing in the appearance or behavior of mule deer beneath a low-swooping helicopter that resembles in any way a large, lumbering creature.

Counting mule deer is more like counting jackrabbits, or even grasshoppers. And, bring lots of paper when you're planning to count mule deer from the air. You'll first write down a total of 2, then look up to see 4 more. Then you'll have to scratch out the 6 when 3 more deer materialize from out of nowhere.

So, maybe it shouldn't be too surprising that our annual surveys of mule deer on the Game Range are yielding inconclusive results.

There is the problem of obtaining a precise count of contrary critters, as I've just described. However, I do believe we've adapted well to the challenge. We use a very experienced helicopter pilot, whose main job aside from

keeping us in the air is to sort out the groups we've already counted from the ones we haven't, and to haze the deer in a manner that discourages groups from mixing. I'm sure we double count some deer and miss a few others, but I doubt that we're talking about very many, and we hope the errors balance out.

We also try to have a second observer in the helicopter to count the bucks in each group while Jamie Jonkel or I obtain the total and classify the fawns. The faster and more efficiently we can work each group of deer, the better able we are to keep ahead of previously counted deer before they can catch up with deer that we haven't counted.

Also, we're focusing our intensive survey effort on the 8 square miles of the Game Range that burned in the 1960s, and again in 1991. This fairly dry and rugged terrain on the south end of the Game Range, along Sperry Grade, is heavily used by mule deer every winter. It also has the advantage of being mostly treeless these days, so we have a legitimate opportunity to see almost every deer in that area every year.

Then what could be inconclusive about a fairly steady increase in annual counts from 289 mule deer in January 1998 to 384 on January 6, 2002?

Game Range Ramblings
by Mike Thompson, Wildlife Biologist
Montana Fish, Wildlife & Parks



Well, for one thing, when biologists look for a real increase in a wildlife population, they look for an increase in numbers of adult females. Our data from January helicopter surveys on the Game Range indicate only a steady number of adult does in the survey area, varying from 184 in 1998 to 186 in 2002, with a high of 192 and a low of 170 in that 5-year period.

If the number of adult does is not increasing, where is the increase in total deer numbers coming from? It's coming from fawn production. We had a ratio of 76 fawns per 100 does this year, and counted 141 fawns in our survey area, both of which are above average. In 1998 and 1999, we saw only 41 and 45 fawns per 100 does, which held our total deer numbers low.

Yes, fawns count, too. But, they count the most when they survive long enough to more than replace annual losses in the older, breeding population. So far, it seems that annual fawn production and survival is only keeping pace with annual losses in adult does.

One word of caution is warranted at this point. If there is a weakness in our survey data, it is in the accuracy of our classifications of fawns and does. Often, they look very much alike, especially in a year like this when the fawns seem to be larger than aver-

age. All the factors that make mule deer challenging to count from aircraft are even more effective at muddying counts of fawns and adult does on the winter range. However, the fact that our observed fawn:doe ratios have been low when they should have been low (after the hard winter of 1996-97, for example), and high when they should have been high (like this year, when fawn weights have been documented to be exceptionally high elsewhere in the northern Rockies), gives us some confidence that we're in the ballpark.

I have received reports from some hunters over the past couple of years that suggest an increase in numbers of mule deer bucks across the Clearwater drainage where the Game Range population is scattered in summer and fall. Our counts of bucks on the winter range seem to support this, with a fairly steady annual increase from 16 bucks per 100 does in 1998 to 31 bucks per 100 does in 2002.

This information leads us to conclude that hunters aren't killing too many mule deer bucks. (The statewide hunter harvest surranted that hunters killed 63 mule deer bucks in Hunting District 285 in 2000.) But, what about does? Well, the hunting of antlerless mule deer is not legal in HD 285, and is legal only by special permit in HD 282. Last year,



only 3 mule deer does were reported killed by hunters with special permits in HD 282.

The issue remains as to whether the 8 square-mile survey area that we've chosen on the Game Range is representative of the larger mule deer population. This year, we counted an additional 122 mule deer in forested portions of the Game Range that are outside the designated survey area. And, we know that a lot more mule deer than that live there. During Ross Baty's study of elk, mule deer and white-tailed deer on the Game Range in the early 1990s, he was able to observe only 13 of 63 neckbanded mule deer during a helicopter survey, which indicates that we miss more deer than we find in forested habitat.

If the burned survey area is already occupied by all the mule deer that want to live there, then we'll never detect an increase in deer numbers when it occurs. If this were the case, deer that moved to adjacent forested habitats that can't be surveyed effectively would be lost from our data. It would be like estimating the trend in the human population on earth by counting people in Ekalaka. As we accumulate more years of data, we should get a better reading on whether we are surveying an appropriate mule deer winter habitat or not.



Artem Hard, left, and Ashley Holmes stand beside the Mansfields statue. Furnished photos.

Fourth graders take in Missoula Sympony and Mansfield Center.

The 4th grade class from S.L.E. visited the campus of UM today to hear the Missoula Symphony Orchestra and visit with Dr. Steve Levine, (an expert on China) at the Mansfield Center.

We are learning about China and the Chinese New Year. Dr. Levine shared some Chinese cookies, a Chinese Folk tale told about the building of the Great Wall, and presented us with a very special China-Box.

It is a large box full of wonderful things from China along with excellent ideas for teachers and librarians to teach children about the Chinese culture.

After meeting with Dr. Levine, we went to the University Theater to hear the Missoula Symphony Orchestra., along with fourteen other 4th grade classes from around the five valleys.

We heard four different selections, and we were taught the basic differences between the violin, the viola, the cello, and the double basses. The music was wonderful!

We were met on campus after lunch by Karry Betson, a former Seeley Lake student who taught ESL in Taiwan last year. She shared stories and photos


with the students and told them about celebrating Chinese New Year last year in Taiwan.

We really appreciate all of the people near and far who help

to educate our children. Thanks for you interest too.

Sincerely,
Linda Bowers and Gayle Gordon

Cheetah Herders
-presents-
23rd Annual SNOW JOKE
13.1 Mile Foot Race



Watch the Winners finish at the Grade School. Race starts Saturday, Feb. 23, at 11 a.m. Registration at 9:30 a.m.

Drivers - Please watch for runners 11 a.m. - 1 p.m.
Another Seeley Lake Winter Sports Spectacular

DUMP CABLE , FREE DISH

Get A FREE DISH Network Digital Satellite TV System and FREE Basic Professional Installation (\$199.00 value). Just subscribe to America's Top 50

OVER 60 FANTASTIC CHANNELS!
JUST \$22.99 mo.

Includes:
ESPN, ESPN2, Cartoon Network, Disney, Lifetime, Nickelodeon, CNN, A&E, Comedy, TBS, Sci-Fi, TNN, TNT, USA, Discovery, History, Food Network, TLC, CMT, MTV, and many more.

Valid major credit card and 12-month commitment required. Product for promotion may be existing, remanufactured or discontinued system based on availability.

EAGLE Satellite
Serving All Montana
(406) 721-3662
1-888-565-6067



Please Pause For Pets and Paws

Correction! Correction!
The last paragraph in last week's paper should have read: **Paws Up** and thanks to all who continue to support our efforts with donations of money, food and kind words and letters. We have helped several with spaying, neutering and food the last few weeks. We so need your help! We so appreciate your help! Renee made a mercy trip to Missoula a couple of weeks ago to get dog food for our Food Bank people who have pets. Renee goes above and beyond to help pets and people. We both get very down at times dealing with people who have no compassion and are so irresponsible, then so many of you do something such as the Demerles who adopted Sable Ann, or we get a letter or a picture and it picks us up again and we continue on. Thank you!

Paws Up
to our special 4-H boys and girls who help so much! This week we recognize Erin Demerle and Holly Friede for always going above and beyond with love and hard work when it comes to the dogs. Regardless of what they are asked to do, they give it 150%.

Flash!
Please know that when we put a Paws Up ID tag on your pet, it is NOT A COUNTY LICENSE! ONLY ANIMAL CONTROL CAN LICENSE YOUR DOG WITH A COUNTY LICENSE! The tag Paws Up puts on your dog is so we can identify your dog and call you if it shows up at Paws Up. WE HAVE COUNTY LICENSE APPLICATIONS AT PAWS UP, WHICH YOU CAN PICK UP. It's very smart to license your dog for \$20, compared to the costs if it's picked up by Animal Control.

Paws Up
to Bonnie Donohue, who is in the hospital. Bonnie, hurry and come home. Snuggles is doing well, but we all want you home and well!

Paws Up
to the Bultenhuus' hard working dogs, Molly and MaGee, who loaded up lots of Avon and made a sloop through town, making all kinds of good deals and sent a great donation to Paws Up. They even brought doggie treats.

Paws Up
to Maxine and Ray Johannsen for the kind gesture of the beautiful stained glass, and a donation to Paws Up in their name.

A Great Dog is Waiting!
Beautiful, almost pure yellow Lab is waiting for that special person. Polar is 3 years old, neutered and desperately needs a home with a fenced yard. Polar loves kids, is good with cats, and needs to be the only dog. Don't miss out on this wonderful dog!

How Did This Happen to Such a Little Dog?
Kathy Teague brought the most pathetic tiny dog to Paws Up late Friday evening. We feel the little dog is blind. The little thing smelled so bad Renee had to take it outside several times during the night until the 4-H girls arrived, who spent three hours bathing and cutting away the terribly mangled and muddy hair. The toenails had all grown into its pads. The dog is under extreme vet care and at this time we do not know if it will live. We have had no one call on it and we have flyers around town. Does anyone know whose dog this is? Due to its terrible condition, we need to find the owner to find out how this happened. Thank you Kathy for caring, and thank you Koli Zahn for being such a loving help!

Protect Your Pets Feet!
with an ice melter which is pet friendly and environmentally safe. It's called Safe Paw, and it can be purchased at pet stores or on the Web!

Special!
J. we love you!
Elinor Williamson, Paws Up Safe Home
406 677-2174 Renee Stowe
PO Box 522 406 677-3435
Seeley Lake, MT 59868 PO Box 323
Max-profit #368168 Seeley Lake, MT 59868

Beginning Saturday, Feb. 16, we will be open at 8:00 a.m. on Saturdays & Sundays, serving breakfast to noon!

Grill
Serving Daily Lunch Specials
We Have 7 TV's, Darts, & Pool Tables.

Upper Deck Family Restaurant & Lounge
Ta-Ga Orders Call 677-2422
Located in the Lazy Pine Walk

Weekly Specials
Wednesday - Rib Eye Steak Dinner - \$12.95
Thursday & Friday — VALENTINE'S DAY SPECIALS
PRIME RIB WITH CRAB LEGS OR LOBSTER \$16.95
Saturday - Baby Back Ribs - \$10.95
Sunday - Meat loaf, mashed potatoes, salad bar - \$6.95
Monday - Chicken Parmesan - \$6.95
Tuesday - Liver & onions, mashed potatoes, roll - \$6.95
CHECK OUT OUR LUNCH SPECIALS - Senior citizens - 10% discount
Happy Hour EVERY DAY 4-6
2 for 1 domestic draft - \$1.50 • Well drinks - \$1.50 • Micro brew draft - \$2.00
Open Pool Table Wed & Thurs Nites • \$1 Domestic Draft Beer • \$2 Imported Draft Beer

Coupon Special
Buy 1 Dinner, Get 2nd at 1/2 Price
Show Coupon
Coupon Does Not Apply to Daily Specials

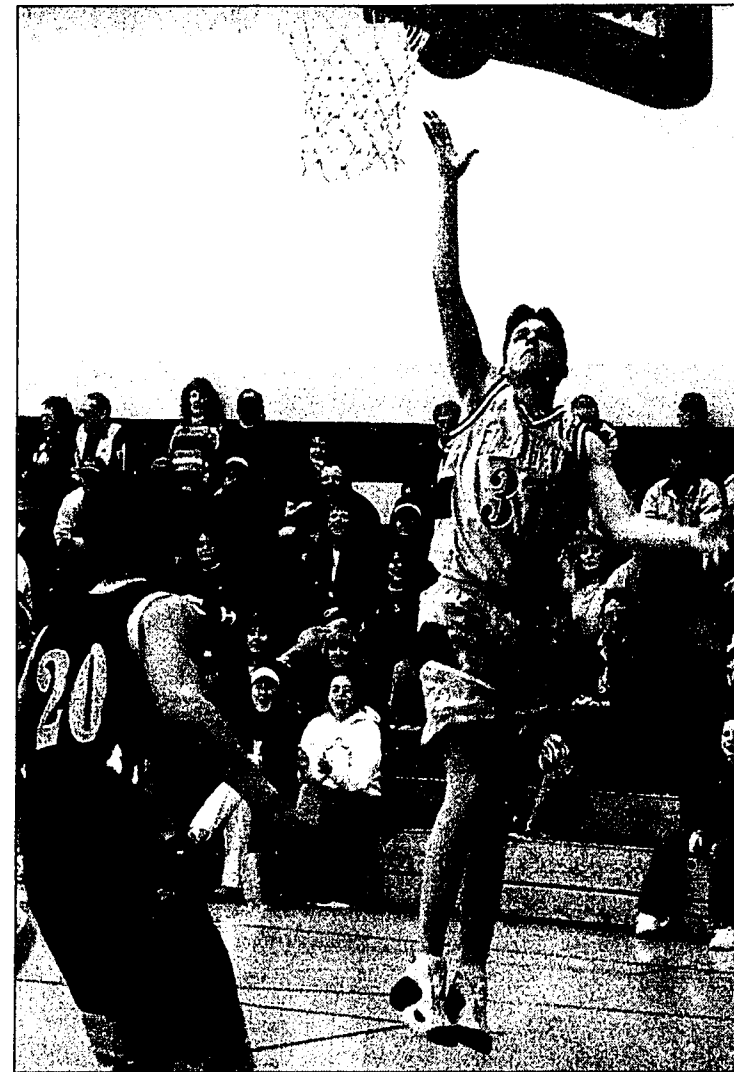
WESTERN FUEL
PROPANE SALES, SERVICE AND INSTALLATION
3182 Hwy 83, Seeley Lake, Mt 59868

We Do More Than Sell Propane!
Complete Sales and Service • Furnaces, Ranges, Space Heaters

24-HOUR EMERGENCY SERVICE
Montana-Owned & Operated
406-677-0180 • 1-800-792-4246



The World's Gateway to the Seeley Swan



Spencer Balcom goes up for two against Stevensville. G. Noland photos



Cody Hard follows through on a 3-pointer outside the circle.

Hawks scare Class A Stevensville

The Blackhawks lost by 11 points, 76-65, to Class A Stevensville last Thursday evening on the home court, but the score might easily have been reversed as two teams battled down to the final two minutes where close contests are decided.

And with 2 minutes left, the Hawks, who had outplayed Stevensville for most of the contest, found themselves down by four, and the Yellowjackets played control ball, forcing the Hawks to foul and Stevensville widened the margin on free throws.

In a see-saw game that kept fans hoping for the upset almost from the beginning, the Hawks were down by three, 14-11, at the end of the first period. With two minutes in the first half, sophomore Cody Hard dropped one of several three-pointers for the night, broke a 30-30 tie, and the Hawks went on an unanswered spree of nine more points, leaving the court at halftime with a 39-30 lead over a stunned Yellowjacket squad.

But Stevensville recovered its composure in the third period and even

pulled ahead, forcing the Hawks to play catchup late in the fourth period.

Zach Nelson led the Hawks with 17 points, followed closely by Cody Hard in double figures at 14, Abe Madinger with 11, and Spencer Balcom with 10. David Pitman added 5 and Riley Devins 2.

The Hawks met a re-charged Loyola team the next evening at Loyola's Ram Center and couldn't stop the run-away Rams who chalked up 90 points while holding the Hawks to 61.

Loyola blistered the net in the first quarter, running up 28 points, and setting the pace of the game, and the Hawks were as cold as the Rams were hot.

Zach Nelson led the Hawks with 25 points. Cody Hard followed with 13, Abe Madinger 11, Brian Gallea 5, David Pitman 2, Riley Devins 2, and Ariah Baker 2.

The Hawks play District 5-B leader Deer Lodge here Friday evening in the last home game before district tournaments next week in Missoula.

INITIAL PROPOSAL SEELEY SALVAGE #2 TIMBER SALE

The Montana Department of Natural Resources and Conservation, Clearwater Unit, is proposing a timber sale within the following sections: 4, 9, 15, T16NR15W and section 36, T17N R15W.

The primary objective is to capture as much value as possible of high risk Lodgepole pine before it succumbs to further pine beetle attack. An outbreak of Mt Pine Beetle (*Dendroctonus Ponderosae*) is occurring in parts of the Seeley Lake area and much of DNRC's land is susceptible to this forest pest. Our secondary objective is to maintain a healthy forest and reduce overall fuel loadings adjacent to homes and cabin sites in a continuing effort to reduce the risk of catastrophic fire in the Seeley Lake area.

Most if not all Lodgepole pine would be removed from targeted stands. Selective harvesting, leaving Ponderosa Pine, Western Larch, Douglas Fir, and Englemann Spruce would be the primary harvest method employed.

The total volume to be harvested is approximately 2.0 - 3.0 million board feet. It is anticipated that no new roads would be required and that approximately 2-3 miles of existing road would be reconstructed. The proposed action would be implemented in the winter of 2002/03 and 2003/04.

This area is known habitat for whitetailed deer, and numerous species of birds.

In preparation for the timber sale, resource specialists such as wildlife biologists, hydrologists, soil scientists and archaeologists, as well as neighboring landowners will be consulted.

The Department of Natural Resources and Conservation invites comments and suggestions concerning this proposal from all interested parties. Please respond by March 30, 2002.

Stephen J. Wallace
Unit Manager
(406) 244-5857
swallace@state.mt.us

Visit

Seeley Swan
Businesses
With Pages
in this site.

Montana Lakes Real Estate

(Real Estate Brokerage)

Mountain Country Rentals

(winter/summer equip rentals)

Cheetah Herders

(Marathon Races)

Swan River

Valley Real Estate

(Real Estate Brokerage)

Rocky Mountain Retreat

(Seeley Lake Bed & Breakfast)

Cougar Mountain

Cedar Homes

(builder laminated logs)

Big West Whitetails

Guided trophy hunts

QDM specialists

Pine Hills Outfitters

in Canada and U.S.

Seeley Lake Motor Lodge

Affordable Lodging

Dan's Discount

Sportsman's Headquarters

Arrowhead Condominiums

Traveler's Destination

Mark Young Outfitters

Private Land Hunts

Brown Bear Gift Shop

(Grizzly Bear Education)

Deer Creek Excavating

(Foundations, Walls, Ponds)

Universal Martin Realty

(real estate sales)

Montana Eco

Outfitters, Inc.

(Special eco tours)

Swan River Tours

(Guided tours with Al Cluck)

Deer Country Quilts

(Unique Quilt Shop)

Lodges on Seeley Lake

(Where the Views are Best)

WTR Outfitters

(One of Montana's Oldest)

Coopenhaver Outfitters

(Hunts & Special Pack Trips)

Novak Lama Company

(Llama pack trips)

Holland Lake Lodge

(One of Montana's Most Scenic)

Double Arrow Resort

(Historic Lodge & Golf)

The Emily A.

(Choice Bed & Breakfast)

Snowcrest Kennels

(Sled Dog Adventures)

The Rich Ranch

(Guest Ranch, Outfitters)

Montana Equestrian

Tours

(Unique Trail Rides)

Kozy Kountry

(Lodge, Steakhouse, Fly-In)

Clearwater River Realty, Inc.

(Real Estate Sales)

Lindy's Steakhouse

(Lakeside Views)

Wilderness Gateway Inn

(Highway 83 Motel)

Lambros Realty

(Real Estate Sales)

Great Bear Properties

(Real Estate Sales)

Another fine web site designed and hosted at:

www.seeleylake.com & www.seeleyswan.com
& www.seeleyswanpathfinder.com

Cheetah Herders



Athletic Club

SEELEY LAKE, MONTANA

Organization • Officers • History • Message from the President



Le Grizz Ultramarathon



Rounding Up
Those Fast Cats



Snow Joke Half Marathon

ALL Cheetah Herder Events Are



Sanctioned by USA Track & Field

"Run Montana"



"Comprehensive
Links to other
running events in the
State."

www.CheetahHerders.com

To Make it Happen for You on the Web, Call Gary at 677-2022 or 677-2689

1-800-800-4260
677-3337
LAZY PINE MALL
HIGHWAY 83
South End of Town

P.O. Box 569 • Seeley Lake Mt 59868
FAX 406/677-3060

Charlee Parker, Broker
Elinor Williamson Ellie Greenough
Kim Koppen

LOCATED on Hwy 83, Lazy Pine Mall on the Pond
greatbearproperties.com - email: info@greatbearproperties.com

Perfection and affordable: 2 bedroom, 1 bath, oak kitchen, living room and large windows for viewing wildlife. 2 car attached garage, landscaped yard, and city water. IMMACULATE! Priced to sell. \$117,000.

LAND! 1 level timbered acre 2 miles east of Seeley Lake. Double wide and modulars welcome. \$22,500.

Established hair salon and tanning parlor in Seeley Lake. 3 stations, new tanning bed. Attached living quarters. Deeded lot. \$120,000.

Top of the line 1850 sq. ft. 3 bedroom, 2 bath home on 2+ acres. Large spacious hickory kitchen out of House Beautiful. Open dining/living/kitchen area with large windows, covered front and rear decks, double carport and workshop. Home is being finished with beautiful pine siding. Home is mostly finished and will be completed by May 15, 2002. Showing now. \$159,900. Super buy!

Cute Home on Approx. 1/2 Acre Close to elementary School. The main level is 864 sq. ft. and includes 1 large bedroom, a dining area, nice kitchen with cathedral ceiling and pantry, a full bath and utility room. There is also a full daylight basement (864 sq. ft.) that is wire framed and rough plumbed for a second bathroom. The tub surround and toilet are there. The dining area has sliding glass doors that lead to a large deck with a nice view of the Mission Mountains. There is a shed on the property also. This would make a great starter home or second home/cabin. \$69,000.

SwanWoods
356 Woodworth Road
Ovando • Montana 59854

Handcrafted Wooden
Salad Bowls
and Accessories

Jerry • Martha Swanson
406-793-5706
800-222-6957

Art Auction to highlight Wine & Chocolate Social

By Patricia Swan Smith

This year's Wine & Chocolate Social promises to be another one filled with wonderful art pieces and entertainment along with incredible chocolates and hors d'oeuvres provided by the members of AAI.

It will be held at the Seeley Lake Community Hall in Seeley Lake on Saturday, February 16th, from 6 p.m. to 9:30 p.m.

While you chat, get those raffle tickets and bid on the silent auction items, you'll enjoy piano music by Gay Brewer.

Just before the live auction starts, enjoy the Celtic Harp played by recording artist Matthew Lyon.

Alan Taylor will be honored as the "Arts Benefactor" for his active involvement with the AAI since 1992.

Over 40 art pieces created by the AAI members will be available at a silent auction and a live auction with pieces selected by the auctioneer. This year, the auctioneer will be Tom Lehman of Seeley Lake.

Special awards for Best of Show, First, Second, Third and Honorable Mentions will be given to winning artists.

This year, Suzanne Shope will be the Juror. She is a professional artist and professor of art and education at Western Montana College.

She's a 5th generation Montanan and granddaughter of western artist Irvin "Shorty" Shope.

Suzanne has been involved in the arts as a teacher and artist most of her life. She has exhibited nationally and received a Master's from SUNY Alfred in New York State. She lives in Dillon with her daughter Angela.

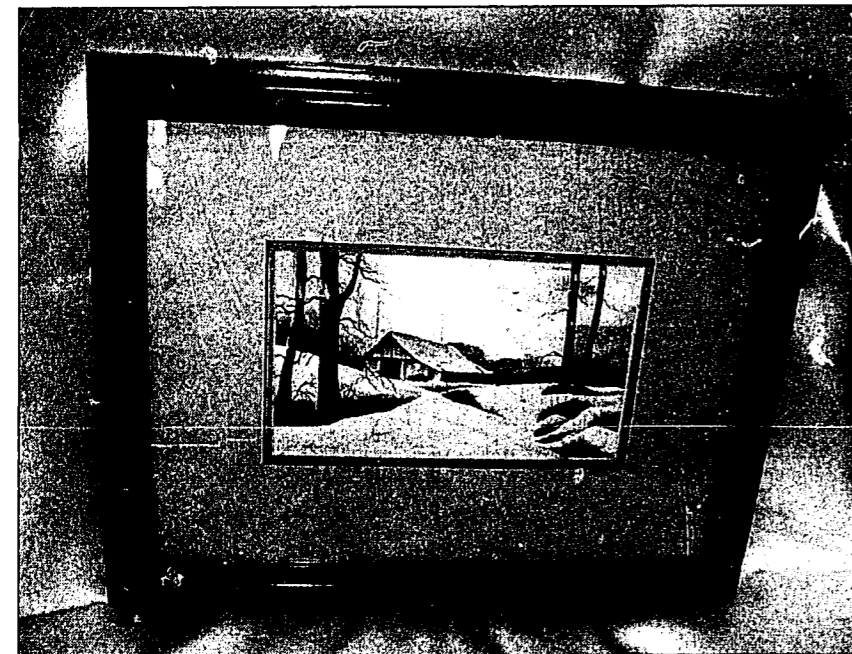
The proceeds from the auctions and admission fees will con-

tinue to support the annual scholarship for a graduating Seeley-Swan senior as well as other community art activities. Last year, Autumn Biggins and Lara Parker, tied for the scholarship and split the \$500 award.

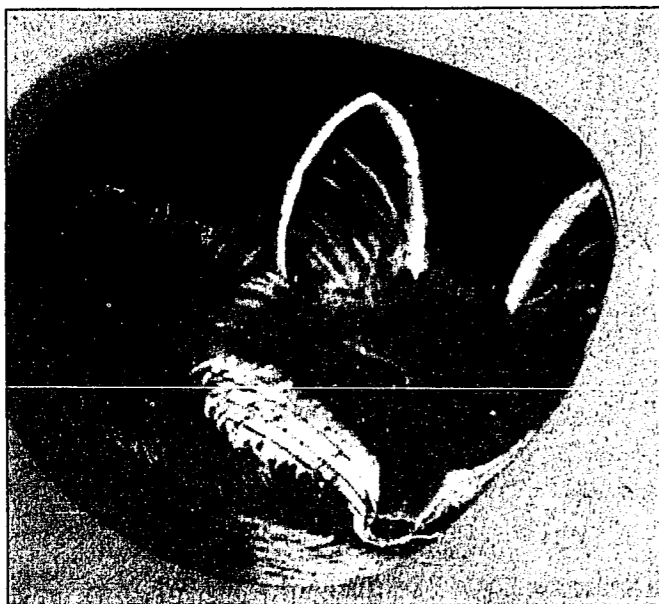
Mark your calendars for an evening of fine art, entertainment, good company, and superb chocolates.



Photography by Colleen Nicholson



Cabin—Water Color by Sandi Antonich



Fox—Rock Painting by Lynn Johnson



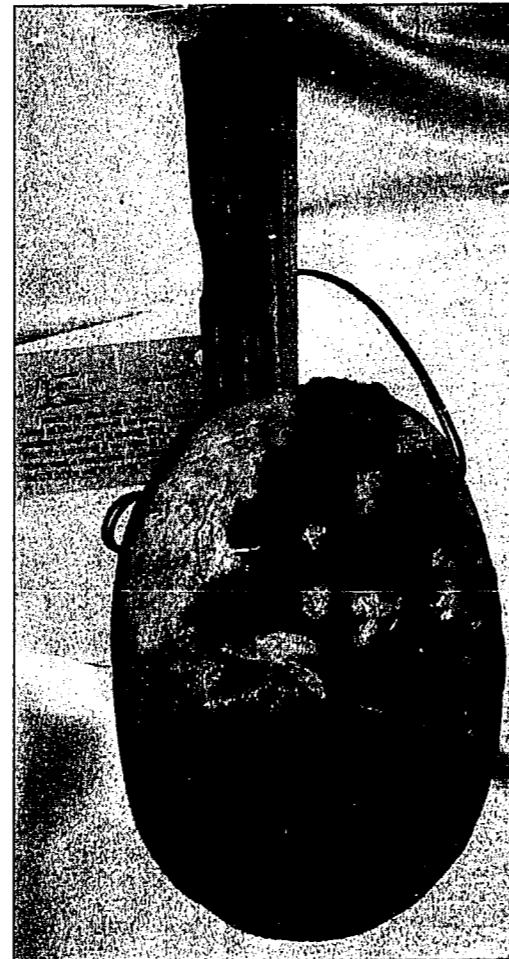
Miniature Mourning Dove by Jon West

Photos by Patricia Swan Smith

Photos are only some of the art items that will be available.



Flying Pheasants—Iron Work by Larry Dufresne



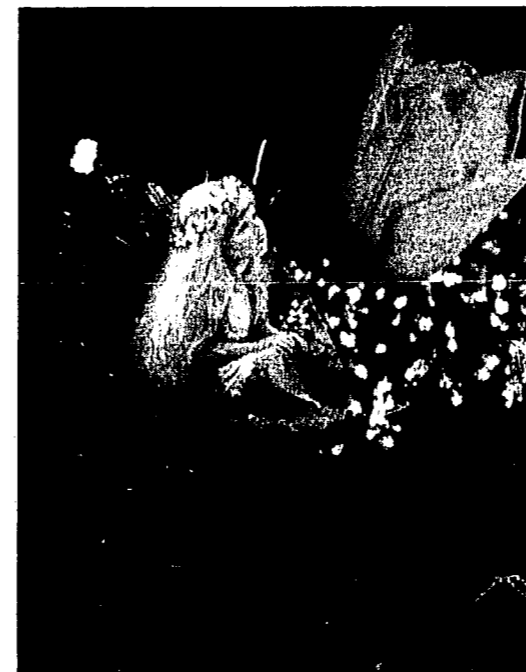
Match Poke by Alan Taylor



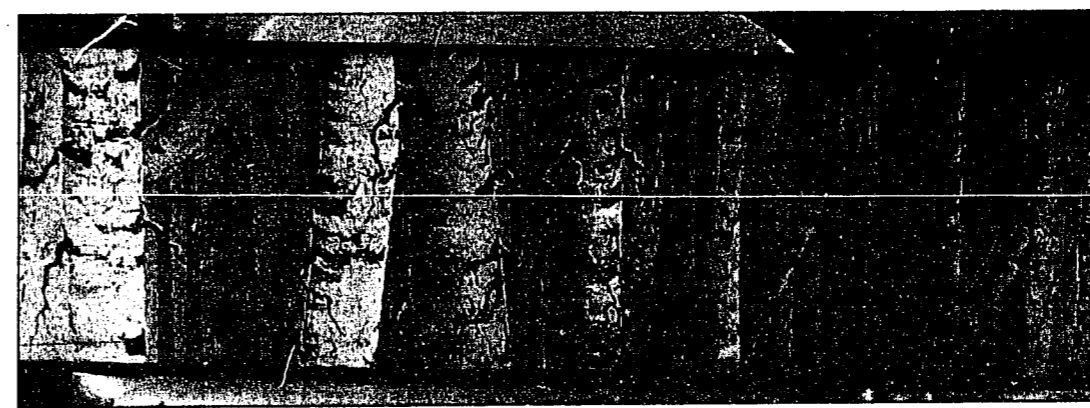
Leather burning by Patricia Swan Smith



Tribal Beauty—Gourd mixed media by Patricia Robinson-Grant



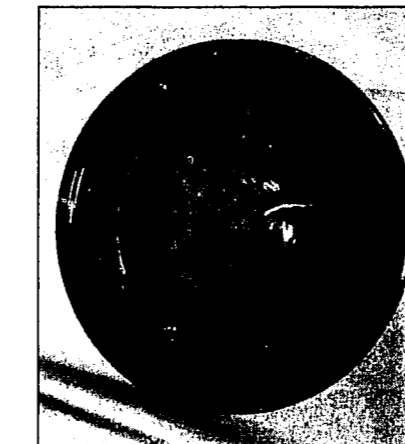
Tulip Fairy—Photo by Patricia Swan Smith



Birch Mood—Acrylic by Mike Patterson



Eagle and Our American Flag—Iron Work by Larry Dufresne



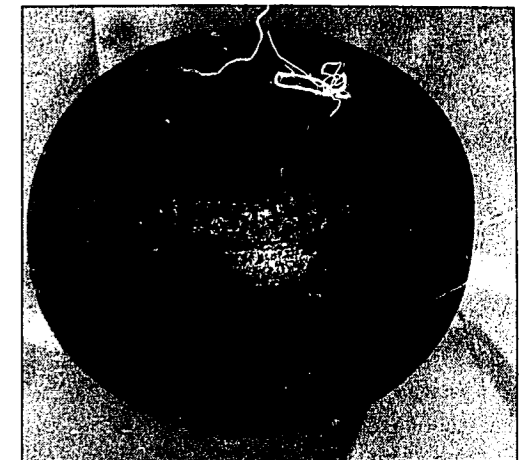
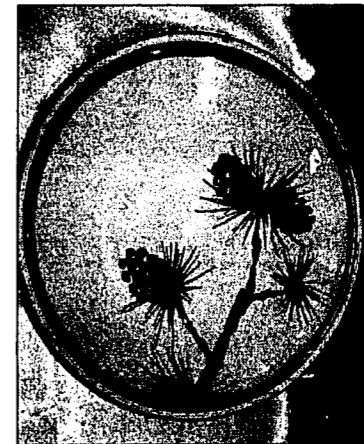
Pottery bowls by Bob Korn



Twilight in the Swan Basket by Carolyn Webb



Pottery Vase by Bob Korn



Mud Rock Vase by Bob Korn



Fly Fisherman by Lynn Johnson

Alpine Artisans

Wine & Chocolate Social

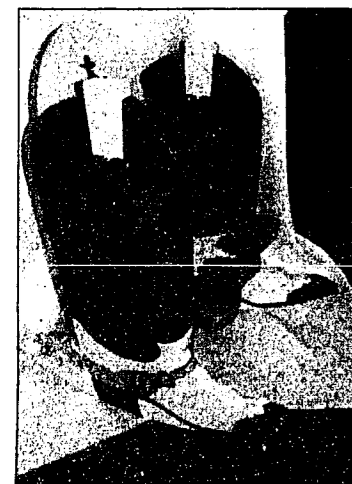
Saturday, February 16, 2002
6:00 p.m. to 9:30 p.m.
at the
Seeley Lake Community Hall / Hwy 83

Come for an evening of wine, chocolate, music, and art auctions.

Admission tickets \$10 per person
Available at the door.
Applicable towards live auction, one per item.

Proceeds go towards funding a scholarship for a graduating Seeley-Swan Senior and to further the arts in the Seeley-Swan Valleys.

For further information or if you cannot attend but would still like to contribute to the scholarship please call...
677-2762 or 754-2262



Rocking Chair by Charlie Grant

Senator Baucus plans Seeley visit Tuesday

The community is invited to turn out Tuesday, Feb. 19, for a town social featuring Montana U.S. Senator Max Baucus.

Baucus, who was instrumental in securing federal funds and guarantees that were instrumental in the construction of the Seeley

Swan Medical Center here and the financial reorganization of Pyramid last year, will be the featured speaker at the "cookie social" at the Community Hall at 3 p.m.

Mary Ann Morin, a trustee with the medical center, said

there will be open discussion of ideas for future economic development and a recognition of several accomplishments in recent years.

The public is invited to attend



Senator Max Baucus, left, on his last visit to Seeley Lake last summer when he was greeted by staff and board members at the Seeley Swan Medical Center and had lunch at Pyramid Mountain Lumber. The senator returns to Seeley Lake next Tuesday, Feb. 19, for another visit and a town social at the Community Hall where he will be the featured speaker.

A COMMUNITY COMING TOGETHER

CELEBRATE OUR SUCCESSES

PYRAMID MOUNTAIN LUMBER, INC

COMMUNITY MEDICAL CENTER

COMMUNITY COUNCIL

TIMBER WORKERS' UNITED

SHARE IDEAS FOR FUTURE OPPORTUNITIES

SHARE YOUR VIEWS AND IDEAS ON SMALL BUSINESS

ADVOCACY, DEVELOPMENT, INFRASTRUCTURE

DEVELOPMENT, CO-GENERATION, OR WHATEVER IS ON

YOUR MIND.

SEELEY LAKE COMMUNITY CENTER

FEBRUARY 19, 2002

3:00 PM

"COOKIE SOCIAL"

Sheriff's Report

(911 calls compiled with the cooperation and assistance of Sheriff Doug Chase and Captain Don Morman.)

February 4 - 11, 2002

2/4, 6:01 p.m. - DUI - Seeley Lake
 2/4, 6:28 p.m. - Injured deer - Seeley Lake
 2/6, 7:48 a.m. - Vehicle accident - no injuries - Seeley Lake
 2/6, 10:32 p.m. - Medical call - Potomac - Lifeflight transported
 2/7, 8:56 a.m. - Follow-up investigation - Seeley Lake
 2/7, 9:18 a.m. - Court papers served - Seeley Lake
 2/7, 11:52 a.m. - Message delivery - Condon
 2/7, 11:59 a.m. - Suspicious activity - Potomac
 2/8, 9:28 a.m. - Machinery tearing up road - Seeley Lake
 2/8, 1:38 p.m. - Vehicle accident - MM 9, Hwy. 83
 2/8, 3:12 p.m. - Officer advice needed - Seeley Lake
 2/8, 3:30 p.m. - Vehicle slide in - MM4, Hwy. 83
 2/8, 4:08 p.m. - Theft - Seeley Lake
 2/8, 7:50 p.m. - Tree across road - MM 19, Hwy. 83
 2/10, 8:14 a.m. - Medical call - Seeley Lake - Lifeflight transported
 2/10, 8:29 a.m. - Fish & Game - deer fell through ice - Seeley Lake
 2/10, 5:14 p.m. - Rocks on road - MM 6, Hwy. 83
 2/10, 5:35 p.m. - Fish & Game - injured eagle - Condon
 2/10, 10:15 p.m. - Persons lost/found - Condon
 2/11, 3:52 a.m. - Tree across road - Condon

OSCR Results

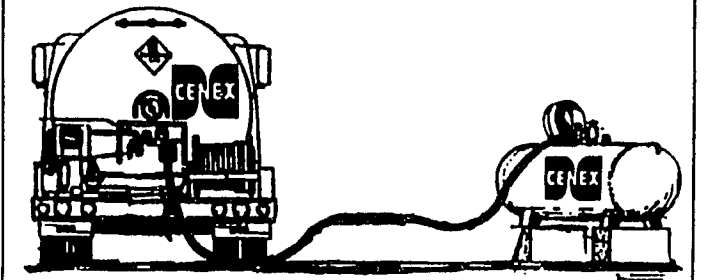
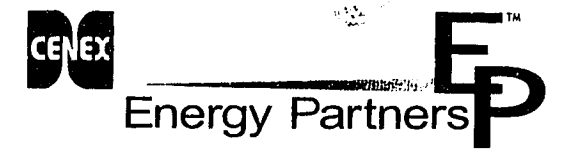
Women 50K	Name	Gender	Age	Time
552	Annie	Female	30-39	3:23:06
555	Jennifer	Female	30-39	3:34:20
575	Lou	Female	40-49	3:53:07
548	Sally	Female	50-58	4:05:53
564	Pam	Female	40-49	5:00:31
Men 50K				
585	Mark	Male	40-49	2:47:29
565	Kiefer	Male	18-29	2:52:19
581	Randy	Male	40-49	2:54:54
567	Donald	Male	40-49	2:56:49
545	Doug	Male	40-49	2:59:52
571	Dave	Male	30-39	3:02:49
583	Per	Male	30-39	3:04:03
580	John	Male	30-39	3:05:08
566	Chad	Male	40-49	3:08:11
582	Jay	Male	40-49	3:09:20
574	Craig	Male	30-39	3:11:44
563	Patrick	Male	50-59	3:12:33
586	Tom	Male	40-49	3:14:50
578	Ian	Male	40-49	3:16:14
551	Marcus	Male	40-49	3:21:16
542	Steve	Male	40-49	3:24:18
557	Rick	Male	40-49	3:24:56
579	Gordon	Male	40-49	3:28:14
543	Fred	Male	50-59	3:30:32
570	Tom	Male	30-39	3:31:44
558	Bob	Male	40-49	3:34:10
544	Joe	Male	50-59	3:36:31
547	Stephen	Male	30-39	3:38:58
546	Steve	Male	40-49	3:42:22
572	Randall	Male	40-49	3:48:19
554	Kip	Male	40-49	3:53:06
559	Tom	Male	50-59	3:55:26
562	Timothy	Male	30-39	4:03:31
549	Tom	Male	40-49	4:04:08
553	Glenn	Male	50-59	4:05:53
561	Dan	Male	40-49	4:26:56
556	John	Male	60+	4:44:27

Women 25K	Name	Gender	Age	Time
237	Jessie	Female	50-59	1:39:34
232	Sidney	Female	18-29	1:48:36
246	Anne	Female	30-39	1:55:55
242	Arika	Female	18-29	2:20:08
256	Anne	Female	50-59	2:43:58
253	Colleen	Female	30-39	2:46:11
216	Sue	Female	50-59	2:46:25

Men 25K	Name	Gender	Age	Time
237	Jon	Male	40-49	1:17:40
238	Evan	Male	18-29	1:21:48
249	Jim	Male	40-49	1:28:30
230	Jay	Male	40-49	1:29:24
247	Jacob	Male	18-29	1:30:15
235	George	Male	40-49	1:34:40
224	Rice	Male	40-49	1:34:40
224	Samuel	Male	30-39	1:35:15
231	Wall	Male	50-59	1:36:06
240	Craig	Male	30-39	1:36:06
243	Brandon	Male	18-29	1:44:15
244	Todd	Male	30-39	1:46:30
226	David	Male	50-59	1:46:47
228	Carl	Male	30-39	1:47:54
254	Steve	Male	40-49	1:48:05
239	Scott	Male	30-39	1:54:42
218	Ted	Male	40-49	1:55:05
241	Stephen	Male	50-59	1:57:20
245	Joe	Male	50-59	2:01:48
252	Jim	Male	40-49	2:06:00
223	Richard	Male	30-39	2:06:50
225	George	Male	50-59	2:08:58
233	Dale	Male	50-59	2:09:17
255	Thomas	Male	60+	2:22:27
234	Bruce	Male	40-49	2:23:52
248	Jim	Male	50-59	2:29:14
229	Grainger	Male	50-59	2:30:36
251	Taylor	Male	30-39	2:30:53
250	Robin	Male	50-59	2:39:40
220	Dave	Male	30-39	2:53:36

Women 10K	Name	Gender	Age	Time
125	Elizabeth	Female	18-29	0:43:48
123	Catherine	Female	30-39	0:50:58
124	Heather	Female	18-29	0:54:55
121	Sherri	Female	30-39	1:00:49
128	Holly	Female	5-10	1:25:33

Men 10K	Name	Gender	Age	Time
122	Marshall	Male	5-10	0:40:15
129	Brooks	Male	11-14	0:41:57
127	Chris	Male	5-10	0:44:25
126	Conner	Male	11-14	0:47:52
119	Karl	Male	60+	1:11:07
120	Dylan	Male	11-14	0:44:20



CHARLIE HAHN
Branch Manager

Propane Installation & Service

Hwy 83 North • Seeley Lake, Montana 59868

Office (406) 677-3656 • Cell (406) 677-4185 • Fax (406) 677-3657

SEELEY LAKE ELEMENTARY SCHOOL MENU

WEEK OF FEBRUARY 18, 2002

Monday, February 18	No School
Tuesday, February 19	Chicken Nuggets
Wednesday, February 20	Ham & Cheese Sandwiches
Thursday, February 21	Pork & Noodles
Friday, February 22	Pancakes & Links

There will be no school on Friday, February 15 and Monday, February 18 for Presidents' Weekend.



1221 N. Russell St. Missoula, MT 59808
For questions, call: (800) 649-4108

The World's Gateway to the Seeley Swan

Dentures ?

If you have them, or need them, call for appointment.

Practice devoted to
 • Removable partials
 • Immediate dentures
 • Repairs while-you-wait
 • Relines and adjustments

NOW ACCEPTING MEDICAID for Dentures

Western Montana Denture Centers

715 Kensington, Suite 25B • Missoula • 542-0609 or 721-2117
1659 North First • Hamilton • 363-6000

Condon Area Senior Lunch

The Hungry Bear Steak House is serving lunch to Condon area seniors (60 years & older) on Mondays and Thursdays at 1 PM. Please call the Hungry Bear at 754-2240 for reservations prior to 5:00 PM the day before. This program is sponsored by Swan Valley Senior Services.

Thursday, Feb. 14
Grapefruit Juice, Ham Slice, Baked Potato, Green Salad, Peaches, Cookie
Monday, Feb. 18
Grapefruit Juice, Stroganoff, Carrots, Coleslaw, Roll, Pudding
Thursday, Feb. 21
Orange Juice, Swiss Steak, Baked Potato, Green Beans, Biscuit, Jello/Fruit



Fine Chocolates
Beautiful Montana Jewelry (\$5 and Up)
All Sweaters and Coats 30% Off

Mon-Sat 9:30-5:30
Seeley Lake MT
677-2227

The Stage Station
Seeley Lake, MT



Attend the Church of Your Choice!

Seeley Lake Church Directory

Faith Chapel (Pentecostal Church of God)
Worship-10:30 a.m. Sunday School-9:30 a.m.
Hwy 83 North Phone-677-2220
Pastor-Gary Wayne

Seeley Lake Baptist Church
Worship-11:00 a.m. -Sunday School 9:45 a.m.
-Sunday Evening 6:30 p.m. -Wed. Bible Study & Prayer 6:30 p.m.
3116 Hwy 83 South Phone-677-2268 (Founded 1953)
Pastor-Bill Bogardus

Holy Cross Lutheran Church
Sunday Worship-6:00 p.m.
Vacancy Pastor-Dave Renfro 1655 Airport Rd.
Phone-677-2281, 677-2143, or 1-406-549-3311

Living Water Catholic Church
Worship Mass: Sunday-11:30 a.m.
152 SOS Road
Ph: 677-2688 or 258-6815
Pastor-Father Ray Gilmore

Mountain Lakes Presbyterian Church
Presbyterian Church (U.S.A.)
Worship-10:00 a.m.
3292 Hwy 83 North Phone-677-3575
Pastor-Scott Anthony

Spirit of Christ Episcopal Fellowship
Worship-2nd Saturday of each month
at the Senior Center-5:00 p.m.
Phone-677-2905

Mission Bible Fellowship (Non-Denominational)
Worship-10:30 a.m. Sunday School-9:15 a.m.
Hwy. 83 & School Lane
Phone 677-2110
Pastor Ken Wutzke

Swan Valley Elementary School Awards

Citizenship
Kindergarten - Anna Stevenson
First Grade - Kamrie White
Second Grade - Justine Janssen
Third Grade - Jessy Stevenson
Fourth Grade - Meghan Janssen
Fifth Grade - Gwen Rosen
Sixth Grade - Caitlin Stone, Nathan Stone
Seventh Grade - Adam Gereg
Eighth Grade - Andrew Matthew
Second Quarter Perfect Attendance
Kindergarten - KeAnna Conley
First Grade - Jake Janssen, Hailey Towe, Kamrie White, Sam Yates
Second Grade - Sophie Hainline, Justin Hood, Justine Janssen
Third Grade - Timmy Siloti, Jacob Smith, David Knodel
Fourth Grade - Megan Christensen, Meghan Janssen
Fifth Grade - Jon Hainline, Gwen Rosen, Brian Thompson
Seventh Grade - Adam Gereg, Justin Thompson
Eighth Grade - Andrew Matthew
Second Quarter Honor Roll
Third Grade - Timmy Siloti, Jessy Stevenson, Jacob Smith
Fourth Grade - Cassie Moors, Meghan Janssen, Jonah Rosen, Nicole Everson, Megan Christensen
Fifth Grade - Gwen Rosen
Sixth Grade - Canyon Parcell
Seventh Grade - Isaac Smith, Steven Bergstrom, Adam Gereg, Jesse Kessler
Eighth Grade - Matt Schnabl, Andrew Matthew, Rincon Parcell
Second Quarter High Honor Roll
Third Grade - Cascade Parcell
Fourth Grade - Callie Trice, Sami Hulett
Sixth Grade - Caitlin Stone, Nathan Stone
Seventh Grade - Jenny Trice, Len Kobylenski
eighth Grade - Sammi Dorne, Mariah Childs
Spelling Bee Participants - Steven Bergstrom, Isaac Smith, Sammi Dorne, Mariah Childs, Jon Hainline, Catalina Parcell, Caitlin Stone, Nathan Stone
Spelling Bee Winner - Caitlin Stone
Alternate - Steven Bergstrom

Marvelous Memory Method

by Clay Sterling

Christian folks have long since realized the importance of memorizing bible verses, and also the importance of committing bible verses to the heart and not just to the head. "Thy word have I hid in mine heart, that I might not sin against thee." (Psalm 119:11)

I have come across an amazing method of memorizing scripture that enables anyone to memorize 17 verses of the bible in ten minutes or less. Anybody who reads can do it, young or old, guaranteed!

To do this, you'll need a New International Version of the Bible with the following verses: Matthew 17:21, Matthew 18:11, Matthew 23:1, Mark 7:16, Mark 9:44, Mark 9:46, Mark 11:26, Mark 15:28, Luke 17:36, Luke 23:17, John 5:4, Acts 8:37, Acts 15:34, Acts 24:7, Acts 28:29, Romans 16:24 and 1 John 5:7.

After you have memorized these verses in the N.I.V., then use the Authorized King James Bible to memorize the same verses. I guarantee, it will take longer than ten minutes.

Two excellent scripture verses to commit to memory are Revelation 22:19 and Deuteronomy 4:2: "And if any man shall take away from the words of the book of this prophecy, God shall take away his part out of the book of life, and out of the holy city, and from the things which are written in this book." (emphasis added); and "Ye shall not add unto the word which I command you, neither shall ye diminish ought from it, that ye may keep the commandments of the Lord your God which I command you." (emphasis added)

QRU Needs New Members

The Seeley Lake Quick Response Unit wants you!! The QRU is seeking people interested in joining the QRU, and will be starting a First Responder Ambulance course in February. No previous experience is necessary, and all the training is done in Seeley Lake. The course will run from February 25 through May 15 on Monday and Wednesday evenings. If you are interested in helping your community, call Kristi Roesner at 677-2987 for more information or to sign up.

SEELEY-SWAN HIGH SCHOOL BLACKHAWKS BOYS BASKETBALL

Friday, Feb. 15
Deer Lodge at Seeley
4:15 ABC
Saturday, Feb. 16
Seeley at Plains
4:15 ABC
Feb. 20-23
District Tournament
Missoula-Loyola

SEELEY-SWAN HIGH SCHOOL LADY BLACKHAWKS VOLLEYBALL

Thursday, Feb. 14
St. Ignatius at Seeley
4:15 V/JV/FR
Saturday, Feb. 16
Deer Lodge at Seeley
4:15 J/JV/FR




COMPLETE PROPANE SERVICE & SALES

- Home Appliance Sales •
- "Top of the Line" Ducane and Broilmaster BBQ's
- Refrigerators
- Ranges • Furnaces
- Water Heaters

406 721-2300
NORTHERN ENERGY INC.
3301 West Broadway
P.O. Box 16044
Missoula, MT 59808

Chicken Coop & Lounge

Who says chicken can't fly!



The "Working Man's" Breakfast & Supper Club

Open For Breakfast At 7:00 A.M. 7 days a week

Cafe Phone 677-2980
Lounge Phone 677-9214

Senior Nutrition Program Menu

The following meals will be served next week promptly at noon at the Seeley Lake Senior Citizens Center. Reservations please - 677-2008. Call before 10:00 a.m.

Monday, February 18
Closed for Presidents Day
Tuesday, February 19
Baked Chicken
Wednesday, February 20
Country Pasta Bake
Thursday, February 21
Beef Pasties
Friday, February 22
Spanish Rice

KaPa Technology
406.677.0440

Computer Repairs
Computer Set-up
Computer Upgrades
Networking Solutions and Analysis
Network Troubleshooting and Repair
Network Upgrades
Software Upgrades
Peripheral Repairs and Upgrades
Business/Residential PC and Mac

OVER 27 YEARS EXPERIENCE IN THE COMPUTER INDUSTRY
FRANK MARADEO OWNER

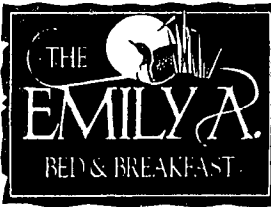
Please support the Seeley Lake Fire Department and the SSTEP program

BUSINESS DIRECTORY

<p>Saddle Maker - Leather Works</p> <p>CLEARWATER LEATHER CO. Priced for the Average Person</p> <p>Leather work & repair Leather Tooling Decker Pack Saddles Saddle Repair</p> <p>Purses, Belts, Holsters, etc. Figurera, Pictorial, Traditional New & Repair All Pack Saddles New Padding, Stirrups, Skirting, etc.</p> <p>John ("Jack") Neibauer 406 677-3274 P.O. Box 1021 Seeley Lake, MT 59868</p>	<p>Plumbing, Heating Service</p> <p>HERITAGE PLUMBING & HEATING L.L.C. COMMERCIAL & RESIDENTIAL HOT WATER HEATING</p> <p>(406) 677-3838 • P.O. Box 1356 KEN SCHMITZ SEELEY LAKE, MT. 59868</p>	<p>Weight Management</p> <p>Weight Management Coach "Toni Sexton" Come & Learn Weight Management Every Tuesday!</p> <p>Senior Center 4:30 Weigh In 5:00 Meetings</p>	<p>Contractor • Builder</p> <p>LAKE COUNTRY BUILDERS INC. Custom • Residential • Commercial Mark Williams Tim Tanberg 677.3448 677.2841</p>
<p>Pharmacy • Floral • Gifts</p> <p>Seeley Lake PHARMACY & FLORAL Bob Szejak RPh</p> <p>P.O. Box 575 • SEELEY LAKE, MT 59868 Phone 677-2424 FAX 406-677-3333 CARDS • GIFTS • FLOWERS • PRESCRIPTIONS • FILM DRUGS • TOYS • COSMETICS</p>	<p>Complete Electrical Service</p> <p>Creekside Electric Inc.</p> <p>Commercial — Industrial — Residential Hank Sommerdyke 406 677-2924 Jon Diamond 406 677-3205 Jim Done 406 677-3205</p> <p>P.O. Box 287 • Seeley Lake, MT 59868 Phone & Fax: 406 677-0050 Cell Phone: 406 677-4019 Email: creekelectric@yahoo.com</p>	<p>Computer Consulting</p> <p>Seeley Computing 406-677-2545 PO Box 1099, Seeley Lake MT 59868 slcomputing@blackfoot.net www.seeleylakecomputing.com</p> <p>Computer & Printing Services Web Site & Graphics Design</p>	<p>Stove / Chimney Cleaning</p> <p>BUCK CREEK CHIMNEY SWEEPS</p> <p>LONGNIE CASEBOLT 754-2726</p>
<p>Printing & Graphics</p> <p>ALLEGRA PRINTING</p> <p>Free consultation on all your printing needs. Free pick up & delivery by owner, Adrian Vanderwielen, in the Seeley area every Thurs.</p> <p>101 E. Broadway, Missoula ph: 728-4210 • fax: 543-7574 Email: allegra@in-tch.com • www.allegranet.com</p>	<p>Tools & Equipment Rentals</p> <p>Rent-All Tools & Equipment for Homeowners & Contractors</p> <p>Monday thru Friday 8 a.m. - 5 p.m. WEEKENDS BY APPOINTMENT 677-2200 165 Redwood Lane Behind Timberline Building Materials</p>	<p>Guest Cabins</p> <p>Whitetail Guest Cabins</p> <p>\$275.00 Weekly or \$55.00 nightly</p> <p>Fully equipped kitchen, HBO Satellite. Exceptionally nice. Great monthly rates too.</p> <p>Ph 406-677-2024 Fax 406-677-2045 www.whitetailcabins.com</p> <p>5 miles north of Seeley Lake on Highway 83</p>	<p>Hair Styling</p> <p>Darcy's Hair Designs Hair Styles for Everyone</p> <p>PO Box 634 • Seeley Lake, MT 59868 (406) 677-2677</p>
<p>Accountant • CPA</p> <p>TERRY S. SHEPPARD Certified Public Accountant</p> <p>P.O. Box 129 Ovando, Montana 59854 • 0129 [406] 793-5718</p>	<p>Taxidermy / Gunsmithing</p> <p>Clearwater Taxidermy & Gunsmithing "THE CLEAR CHOICE"</p> <p>Jeffrey J. Hipkins PO Box 412 Seeley Lake, MT 59868 (406) 677-3499</p> <p>PLEASE CALL FOR AN APPOINTMENT</p>	<p>Veterinarian Services</p> <p>Swan Valley Equine Service</p> <p>Leslie L. Shope, DVM 24-hour Mobile Veterinary Care Reproductive Ultrasound, Lameness, Dental, X-ray.</p> <p>406 677-4130 406 837-1168</p>	<p>Electrical Contractor</p> <p>Seeley Electric LLC William J. 'Bill' Ylengst Master Electrician</p> <p>Office Ph: (406) 677-3020 Cell Ph: (406) 239-3279 Email: SeeleyElectric@TheElectriciansGuild. P.O. Box 306 Seeley Lake, MT 59868</p>
<p>Weight Loss / Energy & Nutrition</p> <p>INCREDIBLE Natural Weight Loss Nutrition & Energy Products</p> <p>Call 677-2574 Dan L. Bielenberg</p>	<p>House Painting</p> <p>Interior and Exterior Quality House Painting</p> <p>Kurt Dally Painting PO Box 1197 Seeley Lake, (405) 677-364</p>	<p>Your Business</p> <p>Hang Your Business Card Here!</p>	<p>Newspaper / Advertising</p> <p>seeleylake.com or seeleyswan.com</p> <p>PATHFINDER 406 677-2022</p> <p>Go to Business Section to see Representative Work We Can Do For You!</p>

BUSINESS DIRECTORY

Lodging - Bed & Breakfast



Marilyn & Keith Peterson
P.O. Box 350, Seeley Lake, MT 59868
406/677-FISH

Property Maintenance

Swan Valley
PROPERTY MAINTENANCE SERVICES
Since 1989

We provide:
Yard & Grounds Maintenance
Winterization of Cabins
Interior/Exterior Painting
Snow Removal
Handyman Services
Insured

We can help you maintain your home and vacation property

Dave Stenhouse
P.O. Box 1023
Condon, MT 59826
(406) 754-2553

Building Contractor



Linford Built Construction LLC
Ted Linford • Contractor • Builder
New homes • Additions • Remodels
Cabinets & Countertops
Montana Reg. & Insured
25 years of Building in the Valley
406 677-2891
P.O. Box 361 Seeley Lake, MT 59868

Contractor • Builder

WILL KATS CONSTRUCTION LLC
Residential Carpentry
Established 1980!
Montana Registration Number: 20064
6380 Woodworth Road • Greenough, MT 59836
(406) 677-3068

Contractor • Builder



ADAMS CONSTRUCTION INC.
Custom Homes Log or Frame
Additions & Remodels
PH: 406 677-3029 P.O. Box 10
Fax: 406 677-0033 280 Eagle Drive
Mobile: 406 239-3125 Seeley Lake, MT

Contractor • Builder

GARY LEWIS OWNER
677-2200
677-2823
FAX
677-2965
DEER CREEK EXCAVATING, LLC
P.O. Box 523 • Seeley Lake, MT 59868

Newspaper / Advertising

Seeley Swan PATHFINDER
P.O. Box 702
Seeley Lake, MT 59868
406 677-2022

Natural Health Products

SPIRIT MOUNTAIN HEALTH PRODUCTS
TWIN LAB • NATURE'S HERBS • POWERTHIN • BIO CLEANSE
AROMATHERAPY • BATH & BEAUTY PRODUCTS
LEON & KRIS MARTIN HWY. 83
P.O. BOX 1124
SEELEY LAKE, MT 59868
Cell Ph 1-406-210-1344

Auto Body Shop

SEELEY LAKE AUTO BODY
Collision Repairs
Painting
Autoglass
Recreational Vehicles
Snowmobile Hood Repair
Insurance Approved
146 Larch Lane S. • P.O. Box 347 • Seeley Lake, MT 59868
Randy Reinitz
677-5010

Photography

Rhonda Malocha PHOTOGRAPHY
Weddings, Graduation, Family, Special Events, Studio & Outdoor Settings
(406) 677-3176
Reasonable Rates

Notices

Is someone hurting you? Call for help and confidential support. YWCA Missoula Pathways, 24 hour Crisis Line, 1-800-483-7858 or your local SSTEP program, 677-3177

Ongoing yoga - in Seeley Lake, Tuesdays, 9 am, Sr. Cit. Ctr; Swan Valley-Thursdays, 9:30, Abolt's home. Info, call Eileen, 677-2350

SPRING BAZAAR. Cleaning house, making crafts, baking, got a hobby? Need money? Here's your chance! Rent a table and sell those items and homemade goodies. Hosted by Women In Service of Holy Cross. Call 677-2346 or 677-2143.

Blackhawk Booster Club meetings will be held the first Monday of the month, 6 pm. High School cafeteria

Help Wanted

Experienced carpenters, carpenter's helpers, 677-2891

Office manager needed. Must know Word, Excel, Quicken. Part time year round. Salary DOE. Send resume to Northwest Connections, PO Box 1309, Condon MT 59826 or call 754-3185

For Sale

OWNER WILL FINANCE WITH SMALL DOWN PAYMENT: 4 BDRM home with office, 2 baths, 1969 sq. ft., 2 car garage, carport, nice yard, basketball court, on 3 lots, close to schools, \$129,000, 677-2857

Firewood, solid Doug fir, split & delivered, \$95/cord, 677-3142

Firewood, \$80/cord split & delivered, 677-3564

'78 Dodge 4x4 1/2 ton, rebuilt motor-\$1500; twin bed, frame, box & mattress-\$60; 6x10 chimney brush w/extensions-\$40; 4 tires-175/70R13-\$40, 677-2857

8 acres available in the heart of Seeley Lake, 2 adjacent lots at 2.72 & 5.18 acres located near snowmobile & ski trailheads & schools. Amazingly private! Access Morrell Creek. \$50,500 & \$51,500, 677-0203, sale by owner.

Moving Sale: Newer couch, love seat, coffee table, end tables, washer; Older beds, freezer, crib, dressers, tables, stereo, 677-3314

Firewood, fir & larch, split & delivered, \$90/cord, 677-3789

Moving Sale: Lots of good items, 400 Spring Ridge Rd., 677-0251

8x16 trailer, 8' ramp, used for snowmobiles, rafts, ATVs, golf carts, small car or equipment, \$1450, 677-2040

Mini storage units available. 98 units to serve your needs. 1/2 off 1st month rent! Clearwater Mini Storage, LLC, 677-3000

Lone Larch Mini-Storage-located on Spruce Drive. Easy access in Seeley Lake, 677-2889

Year-round weekly vacation rental on Seeley Lake. Great downtown location for snowmobilers, 677-3011

2 BR cozy home, Swan Valley, views of Swans & Missions, \$400/mo, available weekly, 677-2350

Efficiency apartment, all utilities paid, \$285/mo + \$300 deposit, 677-3314

3 BR mobile, deck, fenced yard, washer/dryer, snowplowing, dumpster included, references, lease, \$450/mo, 677-2024

Cozy 1 BR cabin, completely furnished, satellite, HBO, all utilities paid, \$550/mo, lease, 677-2024

1 BR house, near downtown, W/D hookups, 677-2968 after 7 pm

Auto Body & Paint & Glass
Approved by insurance companies. Call Sam Bolton, 677-2969 for estimates & information.

Horse boarding. No trainer, new ownership. Pasture or indoor stalls, heated indoor barn & arena. Horse-shoe Hills, 677-BARN

B & B Construction: New construction, remodeling & repairs, 677-3564

The Pathfinder office is located in the Lazy Pine Mall, Highway 83, Suite E-2. Open Monday & Friday, 12-5, Tuesday, 12-4. NOTE: Latest deadline for ads, articles, etc. is 4:00 p.m. on Mondays.

For Rent

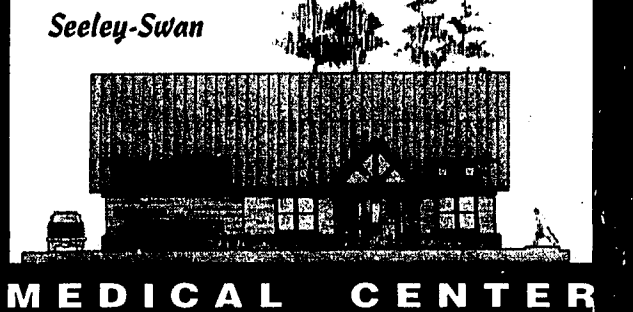
Mini storage units available. 98 units to serve your needs. 1/2 off 1st month rent! Clearwater Mini Storage, LLC, 677-3000

Lone Larch Mini-Storage-located on Spruce Drive. Easy access in Seeley Lake, 677-2889

Year-round weekly vacation rental on Seeley Lake. Great downtown location for snowmobilers, 677-3011

2 BR cozy home, Swan Valley, views of Swans & Missions, \$400/mo, available weekly, 677-2350

The World's Gateway to the Seeley Swan



The Seeley Swan Medical Center is staffed by **Cindy Gallea**, Family Nurse Practitioner, and **Brett Hollis**, Family Nurse Practitioner who will be seeing patients during the transition period. They are supported by the Family Practice Missoula physicians.

Lar K. Autio, M.D.
Donald R. Nevin, M.D.
Terence M. Calderwood, M.D.

Seeley Swan Medical Center
3050 HIGHWAY 83 — SEELEY LAKE
Appointments available Monday-Friday: 9:00 a.m. - 5:30 p.m.
Please call 677-2277

Double Arrow Landowners
Why Haul, When We Haul?

Larson Disposal now serves all the Double Arrow Ranch with Year-Round Garbage Service.

Carts will be furnished with the service. Weekly or bi-weekly schedules available.
CALL FOR RATES & SCHEDULES
677-2252

677-9229 NOW OPEN YEAR 'ROUND

"THE PLACE FOR STEAK"
"OPEN 5 DAYS A WEEK"
Thursday • Friday • Saturday • Sunday • Monday

MORRIS BUILDERS
Brian Morris - Owner
MT Reg. # 12599
P.O. Box 1249 Seeley Lake, MT 59868 101 Rainbow Ct. Double Arrow Ranch

SEELEY LAKE SECOND HAND STORE
OPEN 9 am to 6 pm Mon thru Sat
Fax Service • Photo Copies
677-3622
Corner of Locust & Tamarack up High School Road

Energy Partners
CHARLIE HAHN
Branch Manager
Propane Installation & Service
Hwy 83 North • Seeley Lake, Montana 59868
Office (406) 677-3656
Cell (406) 677-4185 • Fax (406) 677-3657

Lakeview Electric LLC
Commercial & Residential
Licensed & Insured
Ariel & Emily Wasem • (406) 677-3500
Our business is electrifying
Our prices are not shocking
Call us to remove your shunts.

FARMERS INSURANCE GROUP
SEELEY LAKE
Corner of Hwy 83 & Locust Lane
Billie Sytsma, Agent 677-3090

WESTERN FUEL
Propane Sales, Service & Installation
3182 Hwy 83, Seeley Lake, MT 59868
We Do More Than Sell Propane!
Complete Sales and Service • Parators, Ranges, Space Heaters
24-HOUR EMERGENCY SERVICE
Montana-Owned & Operated
406-677-0180 • 1-800-792-4246

Larson Disposal
Don't get down in the dumps, let Larson Disposal do it for you
Seeley Lake, Montana 677-2252

The BACK DOOR LOUNGE & 24 Hour 1-STOP with Credit Cards
Call in orders for the following can be ready in 10 minutes. Burgers and other sandwiches in 15 minutes.
Any item below \$2.75. Fries only \$2.50
Teasers • Deep Fried Vegetables • Onion Rings
Egg Rolls • Fries • Cheese Sticks • Buffalo Wings
Mushrooms • Gizzards
677-2004

Double Ott Trucking
Log Hauling & Water Service
3800 gallon water tender with rear spreader & 3" pump
Kvande Anderson Condon, MT 754-3043 Cell 253-5726

Certified Massage Facilitator
Loving Hands Massage
Specializing in
Relaxation & Therapy for Women
Linda Hannon
Certified Massage Facilitator
754-2494

John Sytsma Attorney
• Real Estate • Land Development
• Divorce/Support/Custody
• Wills/Trusts/Probate
• Accidents/Personal Injury
Corner Hwy 83 & Locust Lane
P.O. Box 504
Seeley Lake, MT 59868

Seeley Swan PATHFINDER
P.O. Box 702
Seeley Lake, MT 59868
406 677-2022

Seeley - Swan PLUMBING & HEATING
COMMERCIAL & RESIDENTIAL
HOT WATER HEATING
(406) 677-3430
Don Schmitz Seeley Lake, MT 59868

Seeley Swan PATHFINDER
P.O. Box 702
Seeley Lake, MT 59868
406 677-2022

Double Ott Trucking
Log Hauling & Water Service
3800 gallon water tender with rear spreader & 3" pump
Kvande Anderson Condon, MT 754-3043 Cell 253-5726

Certified Massage Facilitator
Loving Hands Massage
Specializing in
Relaxation & Therapy for Women
Linda Hannon
Certified Massage Facilitator
754-2494

John Sytsma Attorney
• Real Estate • Land Development
• Divorce/Support/Custody
• Wills/Trusts/Probate
• Accidents/Personal Injury
Corner Hwy 83 & Locust Lane
P.O. Box 504
Seeley Lake, MT 59868

Seeley Swan PATHFINDER
P.O. Box 702
Seeley Lake, MT 59868
406 677-2022

The Lodges on Seeley Lake
800-900-9016
406 677-2376
Bryan & Kerry
P.O. Box 568 • Seeley Lake • MT 59868
www.lodgesonseeleylake.com

ADAMS CONSTRUCTION INC.
Custom Homes Log or Frame
Additions & Remodels
PH: 406 677-3029 P.O. Box 10
Fax: 406 677-0033 280 Eagle Drive
Mobile: 406 239-3125 Seeley Lake, MT

GARY LEWIS OWNER
677-2200
677-2823
FAX
677-2965
DEER CREEK EXCAVATING, LLC
P.O. Box 523 • Seeley Lake, MT 59868

Seeley Swan PATHFINDER
P.O. Box 702
Seeley Lake, MT 59868
406 677-2022

SPIRIT MOUNTAIN HEALTH PRODUCTS
TWIN LAB • NATURE'S HERBS • POWERTHIN • BIO CLEANSE
AROMATHERAPY • BATH & BEAUTY PRODUCTS
LEON & KRIS MARTIN HWY. 83
P.O. BOX 1124
SEELEY LAKE, MT 59868
Cell Ph 1-406-210-1344

SEELEY LAKE AUTO BODY
Collision Repairs
Painting
Autoglass
Recreational Vehicles
Snowmobile Hood Repair
Insurance Approved
146 Larch Lane S. • P.O. Box 347 • Seeley Lake, MT 59868
Randy Reinitz
677-5010

Rhonda Malocha PHOTOGRAPHY
Weddings, Graduation, Family, Special Events, Studio & Outdoor Settings
(406) 677-3176
Reasonable Rates

WOLD'S VALLEY MARKET

**Locally owned
& operated**

One Mile South of Seeley Lake
on Scenic 83

A member of Associated Food Stores, Inc.
SEELEY LAKE, MONTANA



Open 7 Days A Week!

Sunday — Thursday — 7 a.m. to 9 p.m.
Friday & Saturday — 7 a.m. to 10 p.m.

406/677-2121

WE ARE MEMBERS OF



SEE INSERT SPECIALS

Effective February 13, 2002 - February 19, 2002 • POSTAGE STAMPS • ATM MACHINE

The ESPRESSO BOOTH

Easy Access from Whitetail Drive
NOTE HOURS

Mon. thru Fri. 7:00 a.m. to 2:30 p.m.
Saturday & Sunday - 7:00 a.m. to 1:00 p.m.



Join the Coffee Club. See Details at the Booth



Soup's on...

Lunch Menu for this week...2/14 to 2/20

- Thursday: "Esperanza's Blue Ribbon" Chili with Red Beans
- Friday: "Mr. Potato Head's" Cream of Potato with Bacon
- Saturday & Sunday: "Yes, we have no Soup...."
- Monday: "Just Wild About" Chicken & Wild Rice Soup
- Tuesday: "Billie Bob's Bodacious" Beef Stew
- Wednesday: "Eat Your Garden Vegetables" Soup

**Weight Watcher points available for all soups in the booth!*

On line? We can email the week's menu to you ... drop off your address to Lynn!

~ 11 a.m. until gone, 12 oz. bowl with roll - \$2.50

YMCA News Update on Activities

Are You Ready to Get in Shape?

Adult Fitness Classes are in progress. Walk fit classes are Monday, Wednesday and Friday from 8:15 to 9:15 a.m. in the Seeley Lake Elementary School gym. Participants will have the option of walk fit or step class, warm up and stretch together, walk or step class followed by weights and stretch together. Evening classes are Monday, Wednesday and Thursday from 5:15 to 6:15 p.m. in the new gym at Seeley Lake Elementary School. Monday-Step, Wednesday-Kick boxing, and Thursday-cardio toning. Registration fee is \$15.00 per month for Walk-Fit and \$25.00 a month for Step, Kick and Cardio toning.

Y Basketball began Wednesday, January 9, 2002 for 3rd and 4th graders. Session time is 5:30 to 7:00 p.m. on Wednesday evenings. The registration fee is \$15.00 per participant (family discounts are available).

Bitty Ball 1st and 2nd grade basketball will begin on Saturday, February 2, 2002. We meet at the Seeley Lake Elementary School Gym from 9:00 to 10:00 a.m. each Saturday through March 23, 2002. The registration fee is \$15.00 (family discounts are available).

Please call the Seeley Swan YMCA Outreach for more information at 677-3330.

Special of the Week

"Be My Valentine Latte"

Smooth French vanilla & zippy Cinnamon flavors are blended to freshly steamed milk & aromatic espresso for a special Valentines week treat!

**Weight Watcher points available for coffee drinks in the booth!*

Save .25 cents on any size this week!

"FYI"

Caffeine is on the International Olympic Committee list of prohibited substances with about 5 cups producing a positive test, which may result in being banned.



12 Pack 12 Oz. Cans
Coke Products

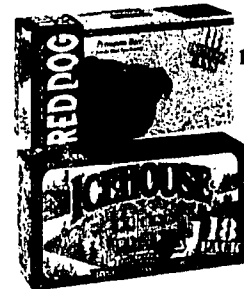
2 for \$7



12 Pack 12 Oz. Bottles

Michelob or Michelob Light Beer

\$8.49



18 Pack 12 Oz. Cans
Red Dog or Icehouse Beer

\$7.99

Clip & Mail Membership Application

NAME: _____

ADDRESS: _____

CITY, ST, ZIP: _____

PHONE#EMAIL: _____

ANNUAL DUES: [11/1 thru 10/31]

(Check one)
Business-----\$ 35.00

Family-----\$15.00

Individual----\$10.00

(Circle one): NEW or RENEWAL

NUMBER of ACTUAL RIDERS: _____



Please mail to Driftriders, PO Box 174, Seeley Lake, MT 59868. Thank You!