

# PATHFINDER



Vol. III, No. 18

677-2022

"VOICE OF THE VALLEY"

754-2365

September 15, 1988

## Lake Alva fire halted

By Gary Noland

A powerline-caused fire swept through 220 acres near Lake Alva and Lake Inez last Friday, but was contained by Saturday morning as fire crews launched men, women and machines into the area in quick response.

The fire spread eastward from a shorted powerline on the east side of Highway 83 near the Richmond Ridge road intersection and burned through 220 acres of Forest Service and Plum Creek lands.

DeLon Potter, incident commander of the fire management team, said that at the fire's peak around 200 firefighters were involved with support from C130 transports dropping retardant Friday afternoon and Saturday morning.

Eight loads of retardant were dropped on Saturday alone from 9 to 10 a.m., with a load containing 3,000 gallons, he said. Four dozers were brought in, several pumpers, and one helicopter were working Friday afternoon.

The aggressive action by Forest Service and Department of State Land personnel, supported by many local contractors and the cooperators including Plum Creek brought the fire under control by noon Saturday.

A tree limb coming in contact with the powerline caused the fire, and winds are suspected of causing the connection.

The fire remained east of Highway 83 and homes in the Lake Inez west of the highway were not threatened.

Seeley Lake District Ranger Dennis Johnson and the fire management team expressed gratitude for widespread support during the fire. The Elkhorn, Barney's and The Filling Station provided numerous meals. The Seeley Lake Motel, Duck Inn, and Wilderness Gateway motels, the towns of Condon and Seeley Lake, and Seeley Lake Elementary school provided sleeping facilities for firefighters during the cold, wet nights. Many people provided other assistance such as law enforcement, busses, pickups, heavy equipment, all to numerous to mention, but not forgotten, the Forest Service said in a release Tuesday.

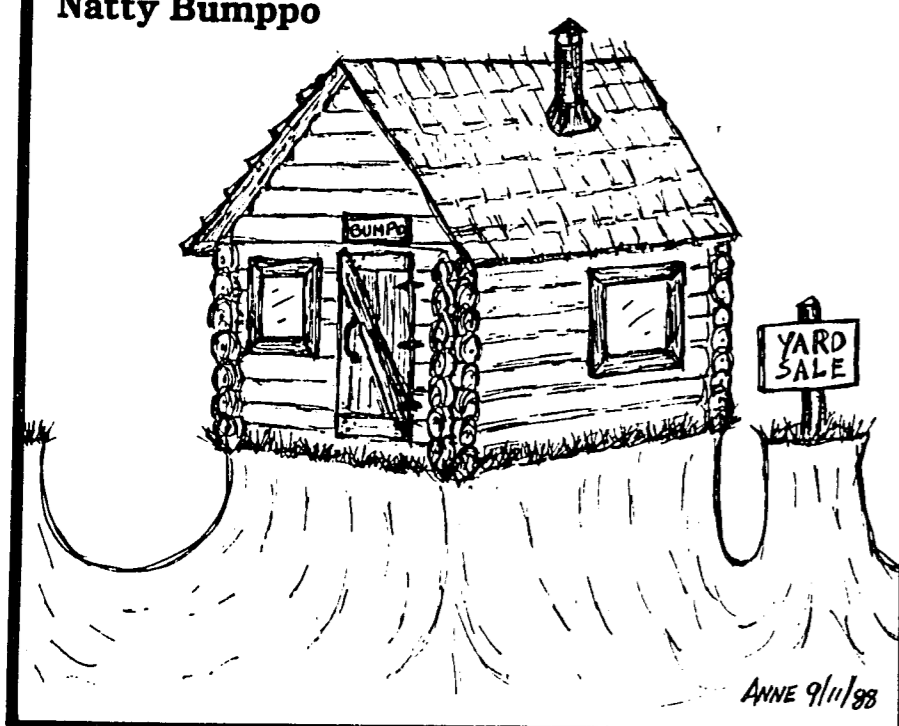
Mop-up operations are still underway. Several engines and quite a few people will be there until Thursday, Potter said.



Men and Women and Machines battle Lake Alva Fire



## Natty Bumpo



## PUBLISHER'S NOTICE

1988

Seeley Swan Pathfinder (USPS 000-919) is published every Thursday by Pathfinder Press, Inc., Timberline Building, Highway 83, Seeley Lake, MT 59868 (telephone 406/677-2022 or 754-2365). Area served is Seeley Lake and neighboring communities. Distribution is by mail subscription (\$12.00 per year in Missoula, Lake, or Powell County; \$15.00 per year elsewhere in U.S.) and by newsstand sales. Ad dead-

line is 4:00 p.m. on Friday prior to publication. News deadline is noon Monday prior to publication. Second-class postage paid at Seeley Lake, MT. POSTMASTER: Send address changes to: Seeley Swan Pathfinder, P.O. Box 702, Seeley Lake, MT 59868-0702.

Gary Noland, Editor  
Millie Jette, Advertising

## COMMUNITY CALENDAR

Community members are invited to submit dates, times and locations of events, meetings and other happenings. Submission deadline: Friday, 6 pm; call 677-2022 or 754-2365.

## Events

September 15, Memorial flag to be flown in honor of Gene Fox, Condon Comm Hall

## Public Meetings/Clubs &amp; Organizations

September 15, Upper Swan Historical Society, 7:30pm, Swan Valley library

September 15, Seeley Lake Elementary Board, 7:30pm, Elem School

September 15, Wilderness Sports-man's Club meets, 7:30pm, Leisure Lodge

September 19, Seeley Lake Community Council, 7pm, Comm Hall

September 19, Seeley Lake PTA, 7:30pm, Elm School

September 20, Seeley Lake Fire Board, 7:30pm, Fire Hall

September 27, Seeley Lake Refuse Board, 7pm, Fire Hall

September 28, Seeley Lake Water Board, 7pm, REA Bldg

**Other**  
Alcoholics Anonymous  
•Condon: Every Thur, 7:30pm, Swan Valley School

**PYRAMID MOUNTAIN LUMBER INC.**

•Seeley Lake: Sun, 7pm, 449 Grizzly Rd, Seeley Lake; Wed, 7pm, 449 Grizzly Rd; Thur, Noon, 449 Grizzly Rd  
•Young People's Meeting, Every Fri, 7pm, 449 Grizzly Rd, Seeley Lake

Al Anon  
•Seeley Lake: Thur, 7pm, 449 Grizzly Rd, Seeley Lake  
**Refuse Disposal Site,** Wed/Sat/Sun 9am-5pm  
Seeley Lake Public Library (Seeley Lake): School Days, 9:45am-3:30pm (closed from 11:30am-Noon for lunch); Tue & Thur, 7pm-9pm; Sat, 10am-4pm

Swan Lake Library (Swan Lake): Wed & Sat, 10am-2pm  
Swan Valley Library (Condon): Wed, 10am-6pm; Sat, 10am-3pm (starting 9/10/88)

## EMERGENCY:

Dial 911 if you live in Seeley Lake, Condon, Greenough or Ovando. Swan Lake residents dial 886-2324 (Fire, QRU or Search & Rescue) or 1-752-6161 for Sheriff, Highway Patrol.

Seeley Lake, Montana  
(406) 677-2201

Equal Employment Opportunity Employer

## Editorial comment

## Flatlander assails heights

Thought I'd never make it, did you? Well, if I'd had to do it solo the first time, you might have been right, as I stumbled in a recent lonely attempt to drive up to Mt. Morrell lookout to visit the young lady who has made the tower her home this summer.

My plight prompted assistance from Colin Moon, supervisor of state fire crews at Sperry Grade who offered to show me the way. For three days, remembering the narrow road winding up the mountain and the heart-stopping sheer drops on the cliffs, I managed to come up with one excuse or another, all quite legitimate in my mind.

Then, one morning Colin pulled into my driveway, and I knew the time had arrived. How many days are we going to be gone, I asked. "Forty-five minutes to the top," he replied. (He's surely joking, I thought, as I recalled getting within only seven miles of the summit in about an hour.)

The drive took 50 minutes exactly. Fortunately, smoke filled much of the valley that day and blunted the height perception as I occasionally dropped my intense study of the truck's dashboard and instruments to peer out the window. Fifty minutes is about right, I rationalized to Colin. "Your truck has eight cylinders and mine is only a four-banger. Thus, half the time."

One thing I learned as we rounded a sharp curve near the top was to dispense with the reporters' habit of asking questions: "What's the summit elevation?" I asked routinely. Colin grabbed a nearby map and proceeded to read the fine print of 7,790 feet as he navigated the curve and I stared dumbly into the space where the road seemed to end. "Close enough to 8,000," I sighed with relief when he replaced the map. End of questions.

Even though I've now conquered Mr. Morrell, (that's a subconscious typo revealing my respect for the mountain), with the help of an accomplished pilot, it doesn't seem to impress very many locals, and I understand some of the boys are suggesting a ride for me up Morrell in a large, tractor-trailer logging truck, but not until there's snow-cover on the road.

What happened to the good old days when all they did was tar and feather the editor!

-Gary Noland



Janet, in "her" office . . .

## Harvest season

Everywhere we go, people are talking about the harvest season. Seems it isn't just farmers who have battled with grasshoppers and hot weather this year.

Grasshoppers aren't the worst offenders in the Swan. It's the whitetail deer who ravage the gardens at harvest time. They seem to know just when the strawberry patch is about ready to bear fruit; when the fall cabbage should be cut; and of course, when the apples are ripe. And why they insist on stripping the raspberry bushes right down to the stalks, I'll never know.

We harvested most of our edible apples (and raspberries) this month. For the past two years, we have left one apple tree just for the deer. It's a small tree, gone wild years ago. Three years ago, we harvested that tree. The deer wanted revenge. They hopped over the four foot fence surrounding our yard, and ate all of our domestic apples not ten feet from where our mighty watchdog lay sleeping.

There are some inspiring harvest stories this year. One woman I visited with had ripe tomatoes on the vine (not in a greenhouse) for the first time in 12 years. Now that's what a long hot summer can do for you in the Seeley Swan.

Other people reported record crops of berries. And the flowers this year did really well in most everyone's gardens.

We'll be talking about different sorts of harvests in the weeks to come.

Country Journal  
by Suzanne Vernon  
Swan Valley

The general hunting season seems to be just around the corner. The eagles will soon fly over Glacier and the Swan, looking for the red, spawning salmon at the inlets and outlets of our lakes. Mushroom fans will soon begin scouting the back roads for their annual allotments of shaggy manes.

And don't forget the rose hips. They are a great addition to homemade tea. Try drying them with alfalfa and mint and store them away for a January day.

CARLSON Refrigeration Service & Repair  
Prompt Service

Call August Carlson  
Seeley Lake  
(after 3 pm & weekends)

## Toxic pollutants threat to our air

To the Editor:

This is the last in a series of four letters we have written to the PATHFINDER to call public attention to congressional action on S. 1894, the strongest of the pending clean air legislations.

Toxic air pollutants are the most insidious threat to our air. Every year, thousands of pounds of toxic chemicals are routinely released into the air from factories, refineries, vehicles and other sources. These chemicals -- including cadmium, dioxin and PCBs -- cause cancer, birth defects and other serious diseases. They also poison fish and wildlife and make our rivers and lakes unfit for drinking and recreation. Airborne concentrations of toxic chemicals that seem tiny may mean an enormous potential for absorbing deadly molecules into our bloodstreams. These dangers are not just theoretical. Counties that are downwind from a petrochemical complex have significantly higher respiratory cancer rates than counties that are upwind...there are 156 such counties in 27 states and 20 percent of such counties suffer from the highest cancer rates in the nation. Toxic chemicals are generated by too many sources, travel too far and are dangerous in such low concentrations that they must be controlled at their source. Presently there are no effective standards to control airborne toxic chemicals.

Many people think if you ignore the problem it will go away. We believe if we face the problem we can find a solution. We wish we had the resources to contact each member of Congress and plead our case for facing the problem and finding a solution. Big industry does have that kind of money--and they are spending it to defeat enactment of strong clean air legislation. But, as is so often the case, individual commitment will have to substitute for big bucks. You can help the battle for clean air enormously by setting aside a few minutes to write a letter to Senator John Melcher telling him why you think he should work hard to pass S. 1894. We know we are asking you to do something you may not previously have done: to write a letter to your Senator. But only strong expression of public opinion will convince our elected representative that we are serious about our demand for clean air.

Betty and Dean Halverson  
Lincoln, Montana

## Belated Congratulations

To the Editor:

To the Seeley Lakers Mens Fast-Pitch team: A belated "Congratulations!" on your first place trophy won in the June 25, 26 tournament held here in Seeley Lake.

David Ash  
Seeley Lake

## Five Valley Coalition meeting here

Four speakers from around the State will address land use policies at a meeting here Tuesday, Sept. 20, of the Five Valley Economic Coalition, a grassroots Missoula organization that is part of Communities for a Great Northwest.

The Great Northwest organization sponsored the recent "Great Northwest Log Haul" to Darby in a showing of support for logging and timber interests. Speaking at the general membership meeting will be Bruce A Vincent, executive director of Communities for a Great Northwest, Libby; Bob Armstrong, first vice-president of the Lincoln Economic Development Corporation, Lincoln; Warren Elli, timber lands and mineral officer of Flathead National Forest, Kalispell; and Bob Bushnell, president of the Montana Snowmobile Association, Helena.

The public meeting will start at 7:30 p.m. at the Seeley Lake Community Hall.

Roger Johnson, president of Pyramid Mountain Lumber, Inc., Seeley Lake, said the agenda will concentrate on "...issues that affect land use."

"There are land use policies developed daily that impact us. The Forest Service is constantly seeking input. We hope to awaken the silent majority and help them become informed," he said.

According to Johnson, goals of the coalition are to:

1) Keep the citizens of Northwest Montana informed of the facts concerning public land use. This information will help people evaluate how changes in public land use policies will affect them.

2) Solicit responses from the public on proposed changes in public land use policies when those changes impact individuals and communities.

3) Seek results from policymakers which reflect public responses.

"Our chief concern is the economic stability of local communities," Johnson said.

## VFW Post organizing in Seeley-Swan

The first organizational meeting for a new Veterans of Foreign Wars Post in the Seeley Swan Valley will be held this Saturday, according to organizers Dan and Joy Rumph.

The meeting, at 5 p.m. at the Community Hall in Seeley Lake, will feature several State Line Officers who will be on hand to answer questions and help organize the post.

Officers expected to be at the meeting are Jerry Collins, department commander, Wolf Point; Al Kirkeby, senior vice commander, Helena; Tom Pouliet, junior vice commander, Helena; Larry Longfellow, adjutant/quartermaster, Helena; and VFW Auxiliary president Fran Hippe, Froid.

Dan and Joy served as officers in District 6 at Broadus, with Dan serving as post commander and Joy as president of the auxiliary.

"Through community activities and youth programs conducted by VFW organizations, everyone will benefit by coming together and forming a VFW post in this area," Joy said.

If you are interested, but unable to attend, or if you need transportation, you can contact Dan Rumph at 677-2694.

## CHICKEN Double Front

## SATELLITE SYSTEMS

10' Satellite systems as low as \$34.99 per month or \$599 cash. Systems with descrambler and dish mover, \$1199. Eagle Satellite, Missoula's oldest satellite professionals, 2347 So. Ave. W., Missoula (by Shopko), 721-3662.



By  
Laura  
Bogar

## FOOD FOR THOUGHT

\*\*\* Tasty marinade for chicken: 1/4 cup Dijon mustard with 3 tablespoons lemon juice and 2 teaspoons brown sugar, plus a pinch of cayenne pepper. Great on chicken breast cubes for kebabs or quarters to be broiled on the grill.

\*\*\* The trick to flaky pastry is keeping ingredients cold while you work. Butter or other fat should melt only in the oven, creating light, flaky layers.

\*\*\* Bake bananas (cut lengthwise, then crosswise) with sugar and cream sherry. Dot with butter, grate on a little nutmeg and pop into a 350 degree oven for about 15 minutes. Top with chilled, almost-whipped cream and crunchy praline.

\*\*\* Did you know that Americans consume 3 billion pounds of chocolate a year? Are you doing your part?

\*\*\* You'll enjoy our varied dessert selections at HUNGRY BEAR CHALET (MM 38-39 Condon, 754-2240). Discover for yourself why we've become so popular.

**Hungry Bear**  
Chalet

Cosmetics • Body Lotions • Colognes  
Brushes/Combs • Jewelry • Giftware

**AVON**

Attention First-Time Customers:  
Mention this ad for a 5% discount!

Heatherann Wayne, 677-2220

**TIMBERLINE BUILDING MATERIALS**

LUMBER  
PLYWOOD  
METAL ROOFING  
CEMENT PRODUCTS  
GENERAL BUILDING SUPPLIES

**Bud's Bits**

The weakest points in a roof, from a weatherproofing viewpoint, are the angles where slopes meet to form a valley and where chimneys and vent pipes project through the roofing. Flashing is installed to make water tight seals between adjoining structures or surfaces to protect these vulnerable areas.

**Special**  
T&G Cedar Pattern WP-4  
1X4 \$425.00 PM  
1X6 \$525.00 PM  
1X8 \$575.00 PM

Monday through Friday 8:00 a.m. - 5:00 p.m.  
Saturdays 10:00 a.m. - 2:00 p.m.

Hwy. 83. & Redwood Ln.  
P.O. Box 566  
Seeley Lake, MT 59868  
406/677-2595

**Singlefree Saddlery**  
(406) 677-2189

**ARCH BUILDING SYSTEMS**

**More Space For Less Money.**

When you build with Arch Building Systems, the wooden arch eliminates overhead trusses and support beams, allowing more useable cubic feet of space than comparable framework.

CALL US. WE'VE GOT JUST WHAT YOU NEED.

Phone 677-2555

**MARY CONSTRUCTION** ARCH

SEELEY LAKE, MONTANA 59868

**SPORTS CALENDAR**

**FOOTBALL**  
Seeley Swan High School  
September 17, 1:30 pm  
Seeley at Philipsburg  
September 24, 1:30 pm  
Hot Springs at Seeley

**GIRLS BASKETBALL**  
Seeley Swan High School  
September 17, 6:00 pm  
Seeley at Philipsburg  
September 23, 6:00 pm  
Lincoln & Jr. High at Seeley  
September 24, 6:00 pm  
Victor at Seeley

**CROSS COUNTRY**  
Seeley Swan High School  
September 16, 4:00 pm  
Frenchtown  
September 24, 12:00 pm  
Ronan

**MEC** A non-profit consumer-owned Cooperative

Missoula Electric Cooperative, Inc.  
1700 West Broadway  
Missoula, Montana 59802  
406/721-4433 or 1-800/352-5200

## Public Library Opens

by Loretta Cooper

The public is invited to check out the new Seeley Lake Public Library. The library, located in the Seeley-Swan High School Library, will open September 15 for public access to the high school library collection. This collection contains some 8,000 adult and young adult books and 70 current periodicals.

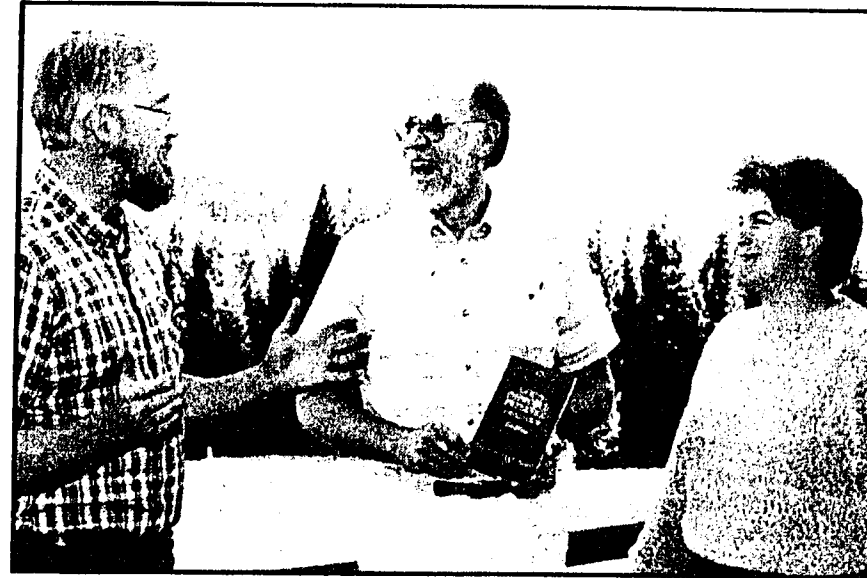
The grand opening of the public library has been set for October 4. At that time, the new shelving will be in place and an additional 2,000 books from the Missoula Public Library will be ready for use. This collection will include books for all ages from pre-school through adult.

Lorrie Gobel has been hired as the public library aide and will operate the library during non-school hours. Loretta Cooper, high school librarian, will operate the library during school hours.

Hours for public use of the library are: 9:45 a.m. to 3:30 p.m. (except during high school lunch from 11:30 a.m. to noon) on every school day. After school hours are Tuesday and Thursday evenings from 7:00 p.m. to 9:00 p.m. and Saturdays from 10:00 a.m. to 4:00 p.m. The public will find parking at the east end of the high school and a convenient door on the south side of the library.

The people of Seeley Lake have done an outstanding job to create this library. Many have donated time, money, ideas, books and a lot of hard work.

Take time to visit your local library!



Dick Potter, left, and Jeane Moon, right, relax with Rod Kvamme, author of another book for which Dick did the composition and Jeane the design work.

G. Noland Photo

## Pastor authors his fourth book

Pastor Rodney A. Kvamme of Seeley Lake has authored his fourth book and has titled it *GOD'S IMPROVED PRESENCE - A Guidebook on the Holy Spirit for Individual or Group Use*. Published by Griggs Printing and Publishing of Havre, the cover design is by Jeanne Moon and the composition by Richard Potter, both of Seeley Lake.

In the foreword, Dr. Alvin N. Rogness, President Emeritus of Luther Theological Seminary, St. Paul, Minnesota says, "No Christian can read it without serious, sometimes troubled, self-examination. Have we ignored gifts that God is eager to give us? Have we been indifferent to the power and joy and comfort that might have been ours? Could the fellowship in the congregation be the richer if we became more open to the prodding of the Spirit?"

This book will deepen our trust in God. The book is itself a gift of the Spirit."

Pastor Kvamme writes from his experience of over thirty years as a parish pastor and air force chaplain. He is a member of the Evangelical Lutheran Church in America. He and his wife, Pauline, live in Seeley Lake and are involved in a ministry of writing, speaking and conducting weekend retreats. He also is currently serving as Interim Pastor at Prince of Peace Lutheran Church in Missoula.

Other books by the author are *PROFILES OF THE CHRIST (We See Jesus...)*, *CARELESS AND LOVING IT! (Clues for Living from the Confessions of a Happy Pastor)*, and *MIRACLES TODAY (Understanding How God Participates in Our Lives)*. At the request of the Montana State Library in Helena, these three books have been recorded by the author and are available at no charge to the visually or physically impaired.

Copies of all the books are available at The Stage Station in Seeley Lake or from the author.

## Sportsman's raffle

- Winchester 7mm Mag - Art Wohl, Seeley Lake
- Shakespeare Ugly Stick - Bill Terrill, Lolo, MT
- Simmons binoculars - Ralph Cahoon, Seeley Lake
- Kershaw knife - Brian Morris, Missoula, MT
- Gift certificate - Dick Barnes, Great Falls, MT
- Barney Jette pendant - Kathy Titus, Colstrip, MT
- Floral lamp - Peggy Cahoon, Seeley Lake
- Basket - Pat Gunsch, Seeley Lake
- Cloisonne pendant - Mary Ann Morin, Seeley Lake
- Wind sock - Dick Duncan, Seeley Lake

The Wilderness Sportsman's Club wishes to thank Dan's Discount and Dan and Daisy Cainan for their help in selling tickets and providing prizes, and all individuals who purchased tickets for your support and participation. Revenue from these raffles will go toward construction of the new informational sign for the Blackfoot-Clearwater Wildlife Management Area and for construction of the club's proposed shooting range.

**Seeley Lake MERCANTILE**  
Established Since 1947

7 to 11 677-2331

NEWEST old grocery store

**Custom Wild Game Processing**

Open 7 Days a Week in the Center of Town

## ROGER WADE STUDIO

Photography • Audio Visual Productions • Brochures • Graphic Design  
P. O. Box 1138 754-2793 Condon, MT 59826

## matthew brothers construction

Residential & Commercial Construction

**Remodeling Custom Homes**  
Log • Frame • Metal  
Excavation • Sewer Systems

Free Estimates

Ron Matthew Rollie Matthew  
754-2430 754-2401  
Box 2301 - Condon - Montana 59826

## Hungry Bear Chalet

### Complete Steak & Seafood Menu

We Serve USDA Choice Only

**B-B-Q Spare Ribs** Every Wednesday  
**Prime Rib** Saturday & Sunday

Huckleberry Daiquiris! Open 7 Days A Week

Milepost 38-39, Condon

FALL HOURS \* CLOSED MONDAYS & TUESDAYS  
Dining Room: 5 p.m. - 10 p.m. & Bar: 5-Midnight  
**Jack & Laura Bogar**



## The Coyle Collection

By Eddie Coyle

JERRIE AND EDDIE COYLE with Joan Hall and Kathleen O'Malley—two of Hollywoods starlets who were staying at the Double Arrow Ranch in 1953. (Pictured left to right—Jerrie Coyle, Kathleen O'Malley, Joan Hall and Eddie Coyle.) Eddie & Jerrie Coyle came to Seeley Lake in 1946, right after World War II. In March, 1947, they built what is now The Filling Station Bar. It opened for business on St. Patrick's Day. It was while they owned this bar that Eddie began to compile his famous "Coyle Collection" of black and white photos. Nearly two thousand photos lined the walls and ceiling of the bar at one time. What was business like in Seeley Lake in 1947. "We still used gas lamps and put ice up, out of the lake, for the bar," Eddie explained. They used a 1500 watt Army light plant to pump water from their well. Coyle's installed the first indoor toilets in Seeley Lake at that time. They continued to operate the bar and cafe until 1972. They now operate Coyle's RV Park located directly behind the laundromat. Jerrie also works at Valley Market. The Coyles have two children, Perry & Benita, who both now live and work in Las Vegas; and two grandsons, Kurt and Cayson.

## CHAIN SAWS THAT LAST AT PRICES THAT WON'T.

**STIHL**

011T \$249.95  
**\$199.95**

**STIHL**

028SWB \$399.95  
**\$329.95**

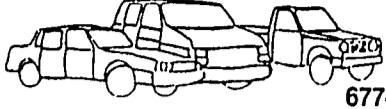
For a limited time only, our 028 Super Stihl Wood Boss® with 16" bar and chain is on sale for \$329.95. And our Stihl 011T with 16" bar and chain is reduced to \$199.95. See us today. Because Stihl chain saws have always been worth a few extra dollars in the long run. And now they're worth a few extra dollars in your pocket, too.

\*Mfg. sugg. retail

**WILLY-BILL'S**  
677-2213 Seeley Lake

Good Used Chainsaws in stock

**STIHL**

**Glen's**  677-2141  
**AUTOMOTIVE SERVICE**  
 Mufflers • Alignment • Transmissions • Alternators • Carburetors  
 Shocks • Engine Rebuilds • Tune-ups • Brakes • Starters  
 Electrical • 4X4's • Lube • Oil • Filter • Air Conditioning • Safety Checks  
 Monday thru Friday, 8:00 am to 6:00 pm — Highway 83 South, Seeley Lake

**SMA** (406) 677-2010  
**Service Management Associates**  
*"The Dependable Professionals"*  
 Toni Hale Grace LeFebvre

  
**Monarch Services**  
 Commercial & Residential Cleaning  
 677-2697



Sheri Bardo readying for her grand opening

### Bardo's opening new floral shop

Dick and Sheri Bardo were busy last week with preparations for the grand opening of a new floral shop this week end in the Condon area.

The Bardo's also own and operate Bardo's Organic Greenhouse and nursery off Lindbergh Lake Road.

The new floral shop is located just off Highway 83 at the first turn off past mile marker 41.

The Bardo's recently purchased a home at this location that was built into an earthen embankment. That will help keep flowers and plants at a constant temperature, Sheri said.

The floral shop will offer fresh flower arrangements in a wide price range to fit most occasions. They also will offer dried arrangements in silks, herbal teas, and medicinal herbs.

A wire service will be offered two days a week. Delivery for now is planned in the Condon area with future plans calling for delivery to Seeley Lake.

Sioux Lunde, a professional flower designer with many years of experience, will be doing arrangements. She will also do wedding consulting, helping with flowers, bouquets and arrangements.

### Swan Valley Elementary News

The Swan Valley Elementary welcomed back 53 former students and 12 new students which included 7 kindergarten students.

All of the former staff returned for another teaching year. In addition Lois Ekstedt will be the Special Education Aide and Cindy Goodman will be the kindergarten teacher.

There will be a School Board meeting on September 13 and an Open House is scheduled for September 27 from 7:00 p.m. to 8:30 p.m.

### NOTICE TO THE PUBLIC

The rubbish dumpster at the Swan Valley Community Hall is not for public use and anyone caught using it for household rubbish or garbage will be fined accordingly.

The dumpster is for the express use of the community hall and library.

**Hungry Bear**  
 Wednesday Nite  
 Ribs  
 Wild Huckleberry Daiquiris!

**SEELEY LAKE ELEMENTARY SCHOOL**  
 MENU - WEEK OF SEPTEMBER 19

Monday, September 19	WEINER WRAPS
Tuesday, September 20	SLOPPY JOES
Wednesday, September 21	HOT TURKEY SANDWICHES
Thursday, September 22	PEANUT BUTTER SAND/TUNA FISH
Friday, September 23	LASAGNA

  
**Blackfoot Tel-Com, Inc.**  
 721-4417  
 1112 North Russell, Missoula, Montana

ORDER YOUR PTA CALENDAR NOW!!  
 SCHOOL PICTURES  
 September 19th



Ken Wolff and 'Red,' a resident Redtail Hawk, outside the new Raptor Room

### Raptor Room needs donations of food

The Raptor Room is in constant need of food for all birds, and especially birds of prey (raptors). The food needed is as varied as the species of birds that come to the Raptor Room for treatment. Worm eaters, bug eaters, fish eaters, grain eaters, meat eaters: ducks, grouse, woodpeckers, eagles, robins, warblers, grebes, hawks and owls and more! A steady supply of foods is needed and an adequate amount to be frozen or stored for any specie incoming patient or those that are 'wintered over' for spring release.

In June and July of this year, the Raptor Room fed 645 pounds of meat. It is anticipated that up to 6,000 pounds of various food stuffs will be consumed in 1989. A starved eagle will eat 3

pounds a day; a healthy owl may eat 300 mice per month; a juvenile Kestrel (a small falcon) currently eats over 100 grasshoppers, plus 2-3 mice per day. Many birds require several months of rehabilitation before they are either released or transferred.

Donated food may be frozen fresh and stored in zip bags or freezer paper. The birds won't eat locker burned meat or spoiled things. Wild occurring foods or those of compatible substitutions are preferred.

Acceptable foods needed are:  
 Small fish, 2-8"; mealworms, mice—both white and brown, ground squirrels (gophers), small quail and grouse, dead small birds, hearts and livers (not pig), grasshoppers and large in-

sects, voles, moles, shrews, squirrels, gerbils, hamsters, grains, dried sheep milk, dried goat milk, hay and bird seed.

The Raptor Room cannot accept food tainted with LEAD, POISONS OR CHEMICALS. Small animals should be killed with solid bullets only or trapped. Birds should come from window or auto crashes only.

The Raptor Room will pour concrete for the new hospital on Monday, August 8. 90% of the building materials are paid for and on site — looks like a huge puzzle.

\$17,000 has been collected thus far — \$12,000 is still needed for 1988 to build cages and pen and flight areas.

Several other items are needed for the facility.

### Raptor room construction underway

Construction is well underway on The Raptor Room, a wildlife rehabilitation facility in the Swan Valley, and board members of the parent Grounded Eagle Foundation toured the facility Saturday, following a regular board meeting at Holland Lake Lodge.

Wall framing is being completed on the hospital portion of the 56' x 72' "T"-shaped building.

This part of the structure measures 24' x 28' and will house treatment areas, food storage room, examination and medication room, office and library space.

When completed, this unit also will provide office space for The Upper Swan Valley History Project, and will serve as a clearinghouse for veterans' information, according to Ken Wolff, director of The Raptor Room and chairman of the local history preservation group. Wolff also is Service Officer for the local American Legion Post.

Fundraising efforts are underway to raise an additional \$11,000 for construction of housing and exercise areas, cage and pen areas, winter housing for education and rehabilitation birds.

Last winter, Wolff shared his home with eagles, hawks, gulls, and deer. He performed surgery on the kitchen table, kept a deer in the pantry, a gull in the bathtub, and eagles in greenhouses.

"We simply need proper facilities," he said.

The Raptor Room has been designed specifically as a wildlife hospital, one of only a few in the United States. It will comply with accreditation standards of the National Wildlife Rehabilitators Association.

While treating sick and injured wildlife, the ultimate goal is to heal the injuries and return the patient to the wild.

Directors for the foundation are Jim Cowan, 1st Valley Bank, Seeley Lake; Dr. Joe Thompson, veterinarian, Seeley Lake and Missoula; Don Wood, forester, Victor; William "Uke" Ukrainez, marketing specialist, Lindbergh Lake; Rod Ash, Swan Valley educator and conservationist; and Ken Wolff, wildlife rehabilitator.

Wednesdays and Sundays are "Volunteer Days" at The Raptor Room. Advisors, sponsors, and friends meet every Wednesday at 10 a.m.

### THERE ISN'T ANY FREE LUNCH But You Deserve the MOST FOR YOUR MONEY

AUTO LOANS  
 LARGE OR SMALL



AUTO LOANS  
 LARGE OR SMALL

WE'RE HERE TO HELP YOU BUY IT!

The many "gimmicks" in auto financing can be confusing. With dealer financing you'll pay a higher price on a low interest rate...or a lower price with a higher interest rate. CASH SPEAKS LOUDEST. We've helped others obtain the best deal, so get the MOST FOR YOUR MONEY! See us for a fast, competitive loan...and then talk turkey with the dealer.

1st Valley Bank • Seeley Lake • 677-2464

MEMBER F.D.I.C. - FULL SERVICE BANK

**THE DRY DOCK MINI STORAGE**  
 DOWN TOWN & ANNEX LOCATIONS  
 Dry & Open Storage  
 Various Sized Rental Units (starting as low as \$15.00/month)  
 WINTER IS COMING — PLAN NOW FOR BOAT STORAGE!  
 677-2238 or 677-2438  
 P. O. BOX 419  
 SEELEY LAKE, MT 59868

**Bardo's Floral Shop**  
**Grand Opening**  
 Sept 16-17 10-6 pm  
 Sept 18 1:00-5 pm

Free Refreshments

Fresh, Dried, and Silk arrangements  
 Flowering Plants  
 Green Plants

For special arrangements please call in orders by Wednesday

**BARDO'S** & Art Gallery  
 Floral Shop  
 754-2419  
 Drawing for a Floral Arrangement

## Senior Nutrition Program Menu

The following noon meals, which are open to the public, will be served next week promptly at noon on Monday, Tuesday and Wednesday at the Seeley Lake Community Hall. Reservations please, 677-2008.

- Monday, September 19  
Fish Nuggets
  - Tuesday, September 20  
Turkey
  - Wednesday, September 21  
Lasagna
- Bingo, sponsored by the Senior Citizens, is on the 2nd and 4th Thursdays at 7 p.m. at the Seeley Lake Community Hall.

## 'Forget Me Nots' donation drive

Volunteers will be accepting cash donations for the "Forget Me Nots," the Disabled American Veterans association, according to Lloyd Knecht, Seeley Lake.

The drive for donations is to raise funds to help the disabled veterans of Missoula County.

"We need between \$8,000 and \$10,000 each year," Knecht said.

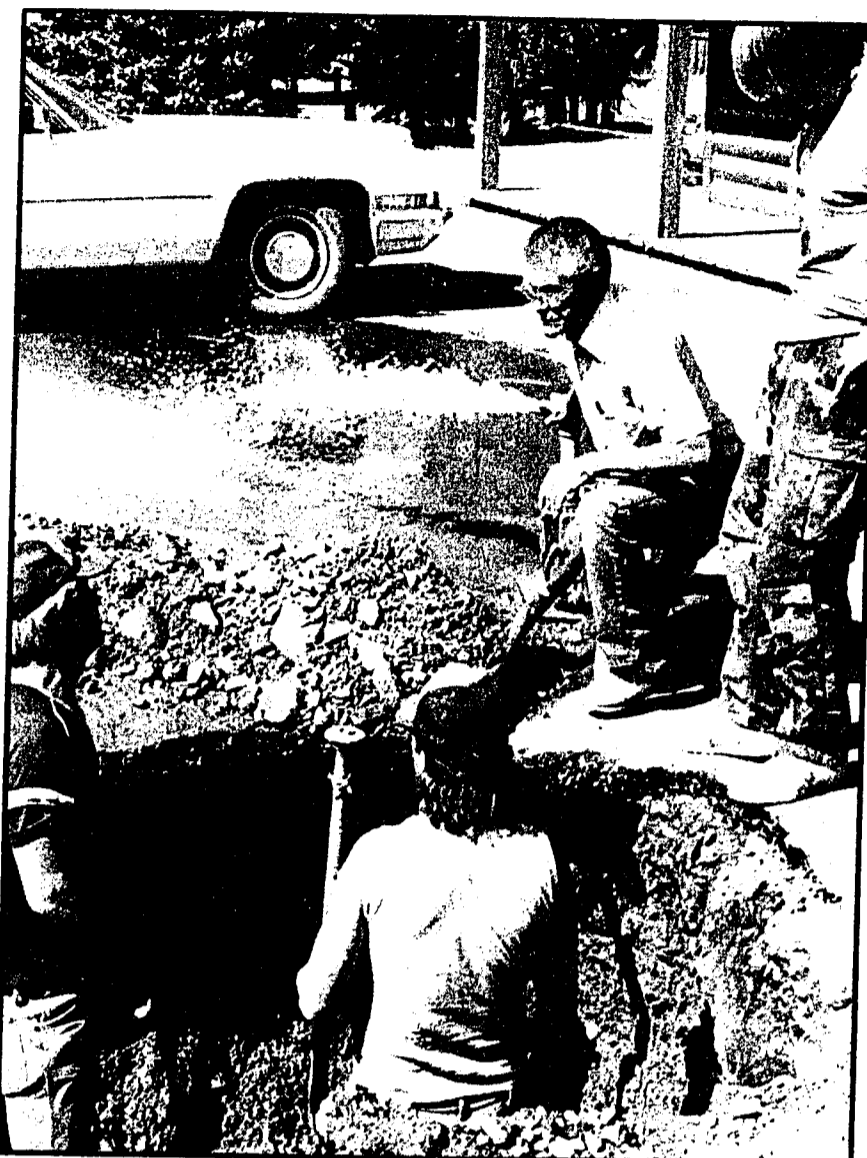
The money is used to help disabled veterans who are out of work and who may need help making house payments, paying rent, or buying gas for travel, Knecht said.

The money also is used to operate the DAV van used to transport veterans to the VA Hospital at Fort Harrison.

There are over 1000 disabled veterans in Missoula County, Knecht said.

"We don't have too many here in the Seeley-Swan area, but we do have approximately 300 veterans here," he said.

Volunteers are needed to accept donations at Valley Market and possibly other businesses on Friday and Saturday.



Bud Anderson, center, plugging the dike downtown

### Plugging the dike

## Leak detection saves lots of water

A survey for leaks in the Seeley Lake Water District ended this week with another sizeable leak being stopped downtown and a total savings of around 500,000 gallons a day that was just leaking away.

Crews dug beneath the street in front of the Stage Station and Rovero's Hardware to plug another leak in a summer long effort to shore up the water system.

"That leak was caused by a one-inch copper pipe coupler that had eroded, and it was probably 20 years old," Bud Anderson, water district manager, said. "A similar thing happened at the Mormon Church line recently," he added.

The connection led into Rovero's, but was detected when water surfaced by the curb box for the Stage Station. "It was probably losing around 70,000 gal-

lons a day, and we're not sure how long it's been leaking, but it had to be sometime in the past two years when I put in the State Station line," Anderson said.

Brian Novak, an engineering student on loan from MSU for the summer, finished his work on the leak survey Friday and returned to school.

"We're 100% complete on the survey, and we've taken care of the major ones, but there will always be minor leaks," Anderson said.

The results are impressive with usage dropping from 828,000 gallons per day to \$324,000. At an average usage of 100 gallons per day per person, that's enough water saved for 5,000 more people, according to Anderson.

"We're now running one hour with the city pump on and two hours off where we used to run 23 hours a day. And, we're experiencing a full storage tank for the first time," he added.



Colin Moon, State Lands supervisor, confers with 'lookout' Janet Spencer

## She enjoys life as a 'lookout'

By Gary Noland

"You have to be comfortable being alone," responded Janet Spender when queried about the long days and nights she spends living the life of a lookout on remote mountain tops.

But that's a life that suits her fine. "I'll continue to do this until I'm too blind to see through the binoculars," she said to this reporter who finally made it to her post at the top of Mt. Morrell just east of Seeley Lake.

Janet has worked here this summer, one of the busiest of fire seasons ever, as a lookout for the State Department of Lands. Last summer was her first as a lookout, a job she volunteered for just to get the chance.

"This position is usually swamped with applications," she said. "So starting as a volunteer is a good way to get the job." She served her first year as a lookout on an isolated post reached by walking six miles in the Lewis and Clark Forest.

Mt. Morrell lookout is quite luxurious by lookout standards, she said, pointing out her refrigerator, breeze cupboard, cooking stove, and propane heating stove arranged neatly in a 14 x 14-foot windowed enclosure reached by climbing several steps from the base of the tower.

It did look quite comfortable, a good spot for the kind of isolation writers sometimes crave, with views extending 80 miles on clear days. And Janet does spend time writing when she's not searching the mountainsides for possible fires.

She and her husband, Jerry, both of Helena, publish a newsletter called "Tidbits," with Jerry working at it in the summer and Janet in the winter when she comes down for an extended stay.

Additionally, she works over her portable computer on two books, one an instructional manual for lookouts and the other a book for the general public on life as a lookout.

She spends sometimes two weeks in her outpost before driving down to pick up some groceries and take care of laundry. Her husband tries to get up on weekends with supplies.

The isolation is broken by many visitors who cautiously brave the road

leading to her domain. "I've had 300 visitors this summer, averaging about 4.5 per day," she said. One couple, driving a motor home, hit a rock on the return trip, rolling down an embankment about 25 feet before coming to rest against trees, she said.

There have been some busy days with fires this summer and Janet was ordered to evacuate her post in late July when supervisors thought the Huckleberry Fire in Swamp Creek might race up the mountain.

A lightning bolt fired a tree a few feet from her outhouse one day and became known as the "Outhouse Fire" with a helicopter flying in to save the structure. That prompted several jokes from her supervisors requesting that she send more "paperwork" on this one.

A constant companion relieving the isolation is "woman's best friend," in this case. Her dog, "Fibber."

"I call him that because he barks at one end and wags at the other end," she laughed.

Janet puts in long hours, officially



from 9 a.m. to 9 p.m., but has time in the mornings and late evenings for walking trips around the mountain.

Janet has been on Mt. Morrell since the end of June and normally would have been down by this time. The extended drought and extreme fire danger has lengthened her stay this year.

**RICH** MEMBER  
**REAL ESTATE**  
Properties • Photocopies • Notary  
Cozy Homes • View Lots  
Tracts on Water  
Come Look!  
C. B. RICH 677-2467

**FRESHNESS**  
Meadow Gold  
MONTANA QUALITY!

Shear Pleasure  
677-2677  
Bonnie Connell, Owner-Stylist  
Barb Dillree, Stylist  
Tues • Weds • Fri, 9-5  
Thursday, 9-8  
Saturday, 10-2  
(other times by appointment)

## MAPS & INFO GUNS & AMMO

HATS • SOCKS  
FLAME ORANGE VESTS  
CAMOUFLAGE VESTS



For Big Game and Big Fish it's Seeley Lake!

**DAN'S DISCOUNT**  
Hunting/Fishing License Agent  
Super Exxon Service



Levi's button-fly 501 jeans. Specially made to give you a unique, personal fit that no ordinary jeans can match.  
Pre-shrunk Shrink-to-fit \$19.95

The Stage Station  
677-2227 Monday-Saturday 9-5pm

## LIEN & BURMEISTER

General Building Contractors

406/677-2115

Seeley Lake, Montana

## Hungry Bear

Wednesday Nite  
Ribs

Wild Huckleberry Daiquiris!

Classifieds...  
Pathfinder!



It looks like a sure catch, at first glance in the far left picture, as Blackhawk Derek Broderick, No. 89, waits near the end zone for a pass. Then a defender, barely visible behind Derek, leaps up to deflect the ball in the second frame, and in the third frame Derek



loses his balance watching the ball fly away. The Hawks won easily, however, against Mullan, Idaho, and now after downing St. Regis have run up a total of 100 points in two games while holding their opponents to only 12.



G. Noland Photo

## Hawks shut out St. Regis 46-0

by Dustin Gordon

On Saturday, September 10 the Hawks played the St. Regis Tigers at St. Regis. For their second game of the 1988 season, the Hawks won 46-0.

The Hawks game plan was to jump on the Tigers early, and that's just what they did. The Blackhawk offense scored on every one of its offensive possessions, ending the game early in the third quarter.

Quarterback Dustin Gordon tied up with senior end Levco Siloti for three touchdowns and Derek Broderick for two conversions. Running back, Leelyn Cahoon, carried for another 100 yard game and scored once, while Barry DeLeo pounded out the inside for short yardage gains scoring one touchdown.

The Hawk defense dominated the game causing five turnovers and holding the Tigers to 90 yards of total offense.

## Lady Hawks Split Games

by Terry Bartlett

Although the Lady Blackhawks were defeated by the Drummond Trojans on Friday, they pulled through and stomped the Arlee Scarlets 57 to 23 on Saturday.

The top scorer for Saturday night was Sandy DeLeo with 14 points; Brittne Hebnes and Debbie Johnson each scored 10 points. The Lady Blackhawks kept the lead the entire game and found an easy victory. The girl's overall record is now 3-1.

## Drummond downs Hawks

by Debbie Johnson

On Friday night the Hawks had their first loss of the season to Drummond, 58-53. They now have a record of 2-1.

Debbie Johnson was high score for the Hawks with 16 points, followed by Sandy DeLeo with 13. Drummond's MaryAnn Buck led the game with 23 points. Tara Pasha had their next highest score with 11.

## Williams on UM's Dean's List

The University of Montana recently announced the students who made the 1988 summer quarter Dean's List. To place on the list, a student must earn a 3.5 GPA (B+) and take 80 percent of his or her credits for a letter grade. Of those students on the Dean's List, 283 earned a grade-point average of 4.0 (straight A).

Amy Williams of Seeley Lake, majoring in English, earned straight A's for the summer quarter.

## "Warm Places" - energy efficient homes

Seventy-seven energy efficient Montana homes are described in a new book published by the Department of Natural Resources and Conservation.

The free book, "Warm Places," contains floor plans, photographs and interviews with owners of passive solar, superinsulated, photovoltaic, earth-sheltered and log homes. Located throughout the state, the homes range in size from 862 square feet to 7,000 square feet.

The book is designed to show potential home builders that the house they have always wanted can be energy efficient without sacrificing the features they desire.

The book is available from the Department of Natural Resources and Conservation, 1520 East 6th Ave., Helena, Montana 59860, or from your county extension agent.

## Just add fun.



With a spunky performance, new-built PVT 100 Amp Variable Torque motor, fuel injection, 570cc engine, 1100 cc wheel hub, 14" cranking, and full featured 100 Amp Trail Boss 2960ES is the special all-purpose ATV you can buy. All you have to do is find suitable land - or whatever - to ride it on.

Any vehicle can be dangerous if ridden improperly. Read your owner's manual carefully before you ride. Get proper training and do not attempt maneuvers beyond your capabilities. Never ride without a helmet and protective clothing. Never carry passengers or ride on improved or public roads. These are full-size machines designed for adults. Read, understand and use the proper safety techniques.

**POLARIS**  
Nothing built the way we're built

**CENEX LTD.**  
Box 69 • Ovando, MT 59854  
(406) 793-5555

## Glacier Park extends season

Superintendent Gil Lusk is dedicated to extending the shoulder seasons in Glacier National Park and is pleased to announce that the facilities and services listed below will be available to park visitors after the Labor Day weekend.

**Visitor Centers:** Apgar: open daily until December; Logan Pass: open until September 18; St. Mary: open until October 2.

**Campgrounds:** Open Until... Apgar: September 30 (Apgar Picnic area is open to primitive camping in winter); Avalanche: September 30; Bowman Lake: September 25; Cut Bank: September 10; Kintla Lake: September 25; Logging Creek: September 25; Many Glacier: September 17; Rising Sun: September 30; St. Mary Lake: September 17 (open to primitive camping in winter); Two Medicine: September 10. Bowman Lake, Cut Bank, Kintla Lake, Logging Creek, River and Two Medicine campgrounds are open to primitive camping until closed by snow.

**Entrance Stations:** Open Until... Many Glacier: September 22; Polebridge: September 11; St. Mary: October 7; Two Medicine: September 9; West: October 7.

**Concessions:** Glacier Park, Inc. Rising Sun Motor Inn: open until September 26. (All services will be available at Rising Sun, including lodging, service station, restaurant and campstore.) Village Inn: open until September 26. (Other lodging and restaurant facilities in Apgar and the town of West Glacier.) The red bus tours will also be available between Rising Sun and the Village Inn until September 26.

**Glacier Wilderness Guides:** guided backcountry trips operating until closed by snow.

**Lake McDonald Boat Company:** small boat and canoe rentals - limited services until September 25 (weather permitting).

**Glacier Park Boat Company:** scenic boat cruises on St. Mary Lake until September 25 (weather permitting). National Park Service naturalist programs will be available on some cruises.

**Glacier Park Outfitters:** guided horseback trips operating until September 10.

**Backcountry:** access to backcountry areas of the park is available year-round. Backcountry permits are required.

**Naturalist Programs:** limited National Park Service programs will be available. (Listed in the park newspaper or at the visitor centers).



Air transport planes dropping fire retardant were common sights near Seeley Lake this past week end.

## Price of National Forest maps increases

The price of National Forest maps has been increased from \$1.00 to \$2.00 each. The new \$2.00 price applies to National Forest visitor maps, National Forest Travel Plan maps and wilderness maps for National Forests of the four-state Northern Region (Montana, northern Idaho, North Dakota and northwestern South Dakota.)

These maps can be purchased for the \$2.00 each at National Forest headquarters, Ranger Stations and the Northern Region Headquarters. They can also be purchased through the mail. Make checks/money orders out to "USDA Forest Service."

Ovando  
793-9611

**Trix's**  
Bar and Restaurant

Prime Rib  
Friday Night

Barbecued Ribs  
Saturday Night

Serving Breakfast  
Anytime!

Best Prime Rib in the Valley!

REALTOR • MLS

**Seeley Swan Realty**

JEFF MACON - Broker  
(406) 677-2828  
Box 501 Seeley Lake, MT 59860

## EQC meeting Sept. 28 in Missoula

Chairman Halligan has scheduled the next EQC meeting for Wednesday, September 28 in Missoula. The meeting will begin at 8:00 a.m. at the Holiday Inn Missoula-Parkside (formerly the Sheraton). The meeting will consist primarily of forest practices topics, along with administrative issues.

The first part of the meeting will be devoted to administrative matters and to preliminary study findings and program options for the HJR 49 Forest Practices Study. Following the morning session, the EQC will tour forest practices in the Boles Creek drainage of Placid Lake in the Seeley Swan area. Members of the public must provide their own transportation.



Glacier Park superintendent Gil Lusk at a recent talk before the Seeley Lake Chamber of Commerce.

**MOOSE FEATHERS & MORE**  
A Fine Crafts Gallery  
Open 10-6, Closed Monday  
Kraft Creek Road & Highway 83

**A Better Battery at a Better Price.**

**THE LEGEND**

**\$61.95**  
AFTER MAIL-IN REBATE AND TRADE-IN  
PART NOS. 7524, 7524F, 7574

Gas Haus Seeley Lake  
677-2454

**NAPA**

**OPEN HOUSE SEPT. 24 & 25**

**HOW TO GET YOUR HANDS ON A FAST \$250.**

\$250 IN FREE CLOTHING OR ACCESSORIES

If you fast enough buying a new Polaris snowmobile can get you a great deal more. As in \$250 in free clothing or accessories. Buy any new Polaris snowmobile before October 15 and we'll give you \$250 in free Polaris clothing or accessories. It's the biggest and best pre-season buying incentive we've ever offered.

It extends your coverage for one full year beyond the standard one-season factory warranty. And for a limited time, we're selling this extended service contract at a discount. It's a \$199 value. But if you buy your new Polaris before November 30 you can get it for only \$99.

**THINK FAST.** Your Polaris dealer has it all from arm-straightening performance machines to user-friendly family sleds. But they won't be there for very long. And with the \$250 incentive they'll disappear even faster.

See your Polaris dealer today. Before the snowmobile of your dreams becomes exactly that.

**THE HOTTEST DEAL GOING THIS FALL.** Hot sleds, hot deals. But that's not the end of it. Announcing our new extended service contract.

**NOTHING BEATS THE WAY WE'RE BUILT POLARIS®**

**SEELEY - SWAN SPORTS**  
Seeley Lake \* 677-2833

©1988 Polaris Industries, Inc. \* Seeley Swan Sports is a Polaris company.

**Double Front Chicken**

When going to Missoula, meet your friends at our cafe

543-6264

**\$200 Fall Savings**

**THEY'RE GOING \$200 FASTER.**

Buy any new Polaris ATV before October 31st and you'll get more than a great wheeler with no-shit PVT automatic transmission and MacPherson strut suspension. You'll also get a fast \$200 in your choice of Polaris clothing, ATV accessories, retail financing, or a US Savings Bond. Ask your Polaris dealer for details.

**WARNING: ATVs CAN BE HAZARDOUS TO OPERATE.** For your safety. Never ride on paved surfaces or public roads. Always wear a helmet, eye protection and other protective clothing. Polaris recommends that all ATV riders take a training course. For safety and training information, see your dealer or call Polaris at 1-800-328-9975. In Minnesota 1-800-247-6670.

**NOTHING BEATS THE WAY WE'RE BUILT POLARIS®**

**SEELEY - SWAN SPORTS**  
Seeley Lake \* 677-2833



## A-1 Body Works

Bob Connell

123 Alder Missoula, MT 59801 (406) 549-0332



**HIGH COUNTRY PLUMBING & HEATING**  
Licensed Bonded Insured 677-2078 Locally Owned and Operated

Dave Gustlin, Master Plumber  
Box 485 • Seeley Lake • Montana 59868

## Tiffin Yarns

Knitting/Crocheting/Sewing Supplies  
Handmade Sweaters, Baby Blankets & More

754-2389

(Please call before coming.)  
Independent Shaklee Distributor  
Condon, Mile Marker 38-39

## PRO PERFORMANCE PRODUCTS

### BOAT REPAIR

Authorized Mercury Outboard/Mercruiser Dealer

(406) 677-2340

Box 494 • Hwy 83 S • Seeley Lake, MT 59868



DIANA DONE

## THE LADIE DI

677-2306

Beauty Shop Tuesday thru Saturday 9:00 a.m. to 7:00 p.m.  
Video Shop Monday thru Saturday 9:00 a.m. to 9:00 p.m.



STATE FARM INSURANCE COMPANIES  
HOME OFFICES: BLOOMINGTON, ILLINOIS

PAUL ZIEMKOWSKI  
Agent

Auto • Life • Fire • Health

306 West Broadway Missoula, Montana 59802 Phone: (406) 542-2101

SPLIT RAILS  
LARGE POLES  
ROUND RAILS  
JACKLEG POSTS  
TREATED POSTS  
FENCING MATERIALS

## ALPINE PRODUCTS OF CONDON

ALAN CHILDS 754-2725  
(MILE MARKER 44)

Licensed & Bonded



## Eagle Drilling Co.

Water Well Drilling  
Dean Dorland

Call 677-2610 Seeley Lake

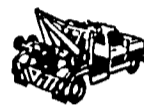
## SWAN VALLEY CENTRE

Condon, Montana 59826

Summer Hours  
7 am-10pm, Mon-Sat  
8 am-10pm, Sunday

Bill & Jo Lynn Mahaffey (406) 754-2397

Grocery • Laundry  
Feed • Auto Service  
Towing



## Sonny's Septic Tank Cleaning Service

Reasonable Rates  
Prompt Service 7 Days a Week  
Modern Sanitary Equipment  
20 Years Experience

OUT-OF-TOWN SERVICE AVAILABLE  
"A Flush Beats a Full House"



362-4495

Licensed, Qualified Septic Tank Cleaning Service

## MEYER CONSTRUCTION

Box 101, Swan Lake • 754-2250

Log Homes • Wood Sheds  
Polebarns • Remodels • Caulking

Also, firewood (larch, pine, fir)  
See at 1/4 mile south of Van Lake Road

## Lake Country Builders

From Custom Homes & Remodels  
to Decks & Docks  
and everything in between



677-2896  
Mark Williams, Owner  
10 Years in the Valley

**D&B Electric, Inc.**  
Don Livingston, Master Electrician  
35 Years Experience

Residential • Commercial • Industrial

Prompt Service • Licensed & Insured

P. O. Box 431, Seeley Lake, MT 59868

## on the level carpentry

FRAMED HOMES LOG CABINS CONCRETE  
REMODELING & REPAIRS

John 677-2597 BOX 140 SEELEY LAKE MT 59868 Ward 677-2566

**The Edge Works**  
Professional Sharpening  
Expert Crosscut Service  
Handles for Homestead Tools  
Refurbished Hand Tools

Kraft Creek Road & Hwy 83, Swan Valley  
Star Route Box 900, Seeley Lake, MT 59868

**Seeley Lake 1-STOP Store**  
Gas & Diesel • Hot & Cold Snacks  
Beer • Pop • Ice • Movies & VCR Rentals  
Hunting & Fishing License Agent • Ammunition

677-2004  
M-F: 6am-11pm • S-S: 7:30am-11pm

## SWAN VALLEY REFRIGERATION & APPLIANCE

Monday: 10am-2pm  
Tuesday thru Saturday: 10am-5pm

Leroy Vick  
677-2137

P.O. Box 690, Seeley Lake, MT 59868

**GREENOUGH AUTO & TRUCK**  
Sales & Service  
Star Route • Box 353  
Greenough, MT 59836

(406) 244-5516 24 Hr. Wrecker

Horse Trail Rides • Summer Youth Camp • River Float Trips  
Wilderness Pack Trips & Fall Big Game Hunting  
Old Fashioned Western Barbecues  
Operated by the Rich Family for over 30 years.

**DOUBLE ARROW Outfitters**  
Jack or C.B. Rich  
Box 495 • Seeley Lake, MT 59868  
677-2411 or 677-2317

k.v. Hook-Ups • Housekeeping Cabins  
Corral Space Available  
Day • Week • Month



Tip & Pat Hooser  
**Whitetail Cabins**  
(406) 677-2181

Located 5 miles north of Seeley Lake on Highway 83  
Star Route 503 • Seeley Lake, MT 59868

AIR CONDITIONED • COCKTAILS

## Lindey's

Open till 25th-September  
"THE PLACE FOR STEAK"  
DINNERS FROM 5:00

SEELEY LAKE 677-9229

## YELLOW ROSE ENTERPRISES

General Building Contractor

"We take pride in what we build  
so that you  
may have pride in what you own."

Dave & Nancy Marx Seeley Lake, MT 59868  
Box 260 (406) 677-2778

**Larson Disposal**  
Put your cans in good hands!  
Seeley Lake, Montana 677-2252

**KRIEG TIMBER HOMES**  
EXCLUSIVE DEALER FOR  
INTERNATIONAL HOMES OF CEDAR

P.O. BOX 142 McALLISTER, MT 59740 KEVIN KRIEG (406) 682-4551

## How do you rate as a husband?

### PASSAGES

Condon Community Church  
Jeff Crippen, Pastor

"You husbands likewise, live with your wives in an understanding way; as with a weaker vessel, since she is a woman; and grant her honor as a fellow-heir of the grace of life, so that your prayers may not be hindered." (1 Peter 3:7)

Men, what is God's evaluation of you as a husband? Most of us would rate ourselves as being at least satisfactory marriage partners—we could probably even get our friends to tell us we are doing pretty good jobs as husbands. After all, we hold down a regular job, we provide our wife with food, clothing, shelter, and so on. But how would we fare if God filled out annual evaluation forms on our job performance? For that matter, just what kind of qualities would God be rating us on? Let me suggest a few to you that I know He would be looking closely at:

1. Treats his wife in an understanding, caring way, frequently trying to imagine he were her and seeing things from her viewpoint.

2. Treats his wife tenderly, remembering that God did not create her to cut, split and stack 10 cords of wood each summer, raise the kids by herself, deal with bill collectors and so on while her husband has "more important things to do."

3. Realize that in God's sight a woman is just as valuable as a man, that she is just as much of a person as a man, that she is not some sort of inferior creation of God's to be treated by the man in any way he sees fit.

As a pastor, I have frequently been contacted by wives who are severely depressed. And husbands, we are the most common source of this depression. We try to rule our wives as if we were absolute despots. We trust our wives as if they were little children incapable of making intelligent decisions or giving us sound advice. We use our muscle and try to intimidate. Some husbands even go so far as to physically attack the woman God has given them.

If you are mistreating your wife in any of these or other ways, notice Peter's closing statement in the verse quoted above -- "so that your prayers may not be hindered." Get the picture? Any man who flunks God's evaluation as a husband has no right to expect God to do him any favors. In the day of such a man's troubles, God simply will not hear.

God is known as the protector of the innocent--the widow, the orphan, and so on. husband, if you are abusing your wife, the bottom line is that God is going to get you for it some day. He is the god who will not permit the guilty to go unpunished forever. Perhaps this is the day for you to start fearing the Lord, and asking Him to change you into the kind of husband He commands you to be.

## Cornucopia by Millie Jette

The following recipes are compliments of my neighbor, Jeanne Moon.

### Jeanne's Chicken-Cabbage Salad

1 whole cooked chicken breast, sliced  
1/2 head cabbage, thinly sliced  
3 green onions, chopped  
1 package Top Ramen noodles  
(do not cook Top Ramen noodles—just crumble into salad)  
2 tablespoons toasted sesame seeds  
2 tablespoons toasted slivered almonds  
(to toast sesame seeds and almonds, heat for 1-2 minutes in a dry frying pan over high heat)

**Dressing**  
2 tablespoons sugar  
1/2 cup oil  
1 teaspoon salt  
1/2 teaspoon pepper  
3 tablespoons vinegar

Mix all ingredients; toss gently with dressing.

### Jeanne's Fruit Pizza

**Crust**  
1/2 cup powdered sugar  
1-1/2 cups flour  
3/4 cup butter or margarine  
**Filling**  
8 ounces cream cheese  
1 teaspoon vanilla  
1/3 cup sugar

**Glaze**  
1/2 cup juice (i.e., orange, pineapple, etc.)  
1 teaspoon lemon juice  
1-1/2 teaspoon cornstarch  
1/3 cup sugar

**Crust:** Mix until crumbly; press into 12" round pizza pan. Bake 15 minutes at 300 degrees. Cool.  
**Filling:** Beat together until smooth. Spread over crust. Arrange fruit of your choice on filling (i.e., kiwi, strawberries, pineapple, huckleberries, mandarin oranges — "This is a combo I often use—colorful!").  
**Glaze:** Wisk together in saucepan, bring to boil and pour over fruit. Chill and serve in wedges.

**VALLEY MARKET** FOOD F FARM  
677-2121 or 677-2122

WORKING TOGETHER WORKS

**TERRY J. SHEPPARD**  
*Certified Public Accountant*  
P.O. Box 152  
Ovando, Montana 59854-0152  
(406) 795-5718  
Tax, Financial Statements, Payroll Reports,  
Bookkeeping, Notary Public

**BITTERROOT WINDSHIELD REPAIR**  
— GlasWeld Systems  
Advanced Technology in Glass Repair

**COUPON**  
SAVE \$\$ \$10.00 SAVE \$\$  
Bitterroot Windshield Repair  
**ROCK CHIP REPAIR**  
Regular \$40.00  
677-2489  
273-2318  
273-2030  
Not valid with any other special offer  
One coupon per windshield  
**Expires Dec. 31, 1988**

**BITTERROOT WINDSHIELD REPAIR**  
Advanced Technology in Glass Repair

**COUPON**  
\$20.00 \$20.00  
**DOLLARS CASH**  
BITTERROOT WINDSHIELD REPAIR  
\*Original Equipment Glass  
\*Insurance Billing Approved  
Towards Purchase of Installed Curved Windshields on American and Foreign Cars and Trucks  
**Expires Dec. 31, 1988**

YES FOLKS at no EXTRA CHARGE we can and will Drive to your home to professionally install any type of Windshield. We will Guarantee YOUR SATISFACTION. Let us save you time and money. GIVE US A CALL TODAY.  
677-2489 • 273-2318  
273-2030  
Bitterroot Windshield Repair

Give Your Hair a Hug!  
**SCRUPLES**  
PROFESSIONAL SALON PRODUCTS  
It's Time for a Change!  
AVAILABLE AT  
**THE LADIE DI**  
Open 9am-7pm Tuesday-Saturday  
677-2306

**NOTICE TO CREDITORS**

Probate No. A-15582  
MONTANA FOURTH JUDICIAL DISTRICT COURT, MISSOULA COUNTY, IN THE MATTER OF THE ESTATE OF CHARLES E. YOUNG, Deceased.

NOTICE IS HEREBY GIVEN that the undersigned has been appointed Personal Representative of the above-named estate. All persons having claims against said deceased are required to present their claims within four months after the date of the first publication of this notice or said claims will be forever barred.

Claims must either be mailed to PEGGY A. YOUNG, the Personal Representative, return receipt requested, at P. O. Box 1645, Great Falls, Montana 59403 or filed with the Clerk of the above-entitled Court.

DATED this 24th day of August, 1988.

/s/Peggy A. Young  
1101 Greenough Bldg. F5 Missoula, Montana 59802

## PHIPPS Canvas & Upholstery

**CUSTOM WORK**

Top Line of Fabrics Available

Greyson & Margie Phipps

(406) 677-2683

Riverview Drive, Seeley Lake



SEELEY LAKE area CABIN, 3 bedrooms, garage, a bunk house, .8 acres, Forest Service Lease. Surrounded by Forest Service. Creek runs by screened front porch. \$35,000

Contact Suzie Royer, RE/MAX of Whitefish, 6th & Spokane, Whitefish, Mt. 599937. (406) 862-3577

## THE FINDER

**FOR SALE**

WOOD STOVES, Airtight-efficient. 3 sizes, \$295. to \$330. JOHNSON WELDING, Swan Lake, 886-2383.

COLE 1983 TOPPER AND ROLL BAR with off-road halogen lights. Will fit small shortbed pickup. \$295.00 for topper; \$200.00 for roll bar. 677-2121. Ask for Gary at Valley Market.

1964 CAT, 955 FRONT-END LOADER, excellent condition, 754-2447

NEW 16' FLATBED CAR TRAILER, w/full deck, ramps, lights and electric brakes. \$1600. See at Glen's Autootive

1974 FORD 6-YARD DUMP TRUCK, good shape, 754-2447

SAWMILL, PORTABLE, Foley-Belsaw, M-14, new with extras, 677-2567

CHRISTMAS SALE IN SEPTEMBER: Tree ornaments, gifts & other items at Elkhorn Cafe, Sept. 18, 10 AM to 5 PM.

BLACK TOP SOIL, SAND, GRAVEL, Delivered and leveled. Call Otis Carter. 677-2440.

FIREWOOD - Rustics in Condon. \$20.00, \$30.00 & \$45.00 per cord. 754-2222.

12 GAUGE BROWNING MAG 5, 2-3/4" or 3" shells. 32" ventilated rib, full choke. 28" modified. Mint condition. \$595. 677-2367

TWO ALTEC SPEAKERS in solid wood cabinets. 200 watts per channel. Excellent shape. \$300.00. 677-2501.

**FOR RENT**

TWO SMALL COMMERCIAL RETAIL spaces. May be rented as one. Call 677-2080.

SHOP, OFFICE, RETAIL OR WAREHOUSE space for rent. 677-2344, Ext. 7

MOBILE HOME SPACE for rent. 754-2455.

TWO TRAILER SPACES for rent. Close to schools. Call evenings, 677-2153.

SEELEY LAKE 3-BEDROOM MOBILE HOME, 2 baths, large addition, private yard. \$350.00. 677-2681 (keep trying).

LOVELY 2-BEDROOM HOME on 1 acre, attached double garage and shop, 1-1/2 baths, carpet throughout, beautiful yard with flowers and trees. \$300.00. 677-2681 (keep trying).

**FOUND**

MALE BLUE HEELER CROSS with red collar found September 12 on Beaver Creek Road. Very friendly but wants to return home. 754-2229.

**HELP WANTED**

CONDON AREA HANDYMAN needed for household repairs-carpentry, plumbing, electrical and clean-up. May need some tools. Hours and salary negotiable. 754-2797 or 251-3711.

PERSON NEEDED for part-time maid work and occasional desk duty. Wildemess Gateway Inn. 677-2095.

**WANTED TO BUY**

ELECTRIC TYPEWRITER in good condition. Please call 754-2480.

**WANTED**

OLD CARS-IN GOOD CONDITION. 25 years or older. Up to \$500 BONUS for one owner. Will pay top dollar. Call 754-2744.

**NOTICES**

GRAYWOLF PRINTING will be closed for approximately two weeks. We're remodeling! Watch for our grand "re-opening" specials beginning October 1! Sheldon & Suzanne Vernon, 754-2369.

\$100.00 REWARD OFFERED for information resulting in the recovery of an Emerson 11-inch combination color television and VCR and a Magnavox VCR in blue carrying case. Stolen September 1 from The Good Times Store. All replies held in strictest confidence. Call 677-2140 or write Box 305, Seeley Lake 59868.

**GIVEAWAY**

FREE TO GOOD HOME: small abandoned dog. Loves children and is gentle. Would make excellent pet. 754-2414. Ask for Sally.

**SERVICES**

PET GROOMING plus limited boarding, Mountain View Grooming - Ella Goodbread. NOTICE: Sept. thru Oct. 15, Frank Wolfram will be grooming during Ella's absence. Call 677-2572 or 677-2805 for appointment.

AEROBIC CLASSES, 9:00 a.m. M-W-F, starting Sept. 12th, upstairs in the Polaris Building. For more information call Becky at 677-2825 evenings.

LAKESHORE RESIDENTS: water is at an all time low—plan your new dock this fall. Financing available. 677-2080 for free estimates.

SEPTIC, WATER SYSTEMS, Lot clearing, driveways, and other backhoe and dump truck services. Call Otis Carter, 677-2440.

BODY WORK, PAINTING & windshield replacement. Ovando Welding & Paint. 793-5808.

PATHFINDER offers photocopying. Stop by our office in the Timberline Building and ask about our 5 cent copies.

**LOST**

GRAY CAT, adult neutered male. Left canine tooth broken. Lost in Lake Inez area on 8/25. Please call 677-2520. Reward.

## Moisture Slows Fires

Snow in the upper elevations and rain helped slow the spread of the Canyon Creek Fire in the Scapegoat Wilderness which expanded over the Labor Day week end to 247,000 acres.

According to a Forest Service information update on Monday, the National Guard and some Forest Service employees were assisting people evacuated from Coopers Lake and the North Fork of the Blacktail Road move back into their homes.

The fire is not out, but the change in weather has helped create more favorable fire fighting conditions, the update said.

Week end precipitation measured 32 hundredths at the Seeley Lake Ranger Station. By Monday, most of the snow in the higher elevations had melted during warmer afternoons.

## Artwork for 1989 Stamp Requested

Montana artists have until October 14 to submit an entry in the 1989 Montana Waterfowl Stamp competition.

The theme for the 1989 Montana Waterfowl Stamp is a Black Labrador Retriever or a Golden Retriever holding a Pintail Drake in its mouth. A head and chest study is suggested and the waterfowl habitat should portray a Montana landscape.

The competition is open to any artist who is a Montana resident.

To obtain the competition rules, Montana artists can call 406/444-2612 or write to the Wildlife Division, Department of Fish, Wildlife and Parks, 1420 East Sixth Avenue, Helena, Montana 59620.

Artwork to be considered for the competition must be submitted to the DFWP in Helena by 5:00 p.m., October 14.

## SEELEY LAKE CABLE TV ANNOUNCES THE ADDITION OF THREE NEW MAJOR NETWORKS!!!

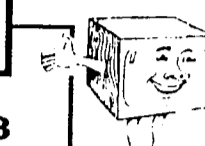
ABC-WXYZ CHANNEL 5

258-6701

NBC-WDIV CHANNEL 8

CBS-WJBK CHANNEL 3

PBS-WTUS CHANNEL 21



## Yellow Rose Enterprises

GENERAL CONSTRUCTION

Concrete	Remodel
Custom Homes	Commercial
Log Homes	Super Good Cents Homes

Dave & Nanci Marx  
Box 260, Seeley Lake, MT 59868  
406-677-2778

**True Value OF THE MONTH**

**99¢** While Supplies Last

WeatherAll® Silicized Acrylic Latex Caulk leaves a durable, flexible seal. Resists moisture. White. 11 oz.

QUANTITIES LIMITED

**ROVERO'S**  
Seeley Lake, Montana  
677-2445

Airline Tickets • Train • Bus  
Cruises • Tours • Cars • Hotels  
Free Flight Insurance

Debbie Clevidence 677-2625

Seeley Swan  
**PATHFINDER**

**SUBSCRIBE ... and SAVE \$\$\$**

(Local subscribers save 1/3 off the newsstand price.)

Mailed to:	1 Year (52 issues)	6 Months (26 issues)
Missoula, Lake, or Powell County	12.00	7.00
Elsewhere in U.S.	15.00	8.00

Yes! I want to subscribe to the PATHFINDER. My check or money order is enclosed. Send my subscription to:

Name \_\_\_\_\_  
Street or P.O. Box \_\_\_\_\_  
City \_\_\_\_\_ State \_\_\_\_\_ Zip \_\_\_\_\_

Please indicate if:  
New  Renewal  Gift

Send payment with this coupon to:  
**PATHFINDER**  
P.O. Box 702  
Seeley Lake, MT 59868

**MOVING?**  
Don't forget to tell us your new address!

Don't miss any issues of the Pathfinder!  
Please use this coupon and mail to:

**PATHFINDER**  
Box 702  
Seeley Lake, MT 59868

**DON'T LOSE MONEY!**  
Unlike 1st class mail, publications with 2nd class permits are now charged a fee for undeliverable issues or a subscriber's failure to notify the publication of address change. Should we have to pay such a fee, it will be subtracted from the subscriber's subscription.

Name \_\_\_\_\_  
Address \_\_\_\_\_  
City \_\_\_\_\_ State \_\_\_\_\_ Zip \_\_\_\_\_

**CHICKEN Double Front**

Joan Cowan Realty  
Box 369  
Seeley Lake, MT  
677-2355

FENCED 10 Acre tract with 2 bedroom Mobile Home, Small Log Cabin, Well, Septic System and a 30 foot by 40 foot concrete foundation. This is ready for a new buyer to start his own home, while living in the Mobile. \$50,000.00

TWO BEDROOM YEAR AROUND HOME on State Lease Ground near Seeley Lake. \$22,500.00

EASY ACCESS to this 2-1/4 Acre Lot on Trail Creek. Level lot with nice trees and native shrubs. \$13,900.00

FANTASTIC BUY on Double Arrow Ranch. 1-1/2 Acre Lot on Black Bear Rd. with Community Water Available and Owner Financing. \$7,000.00

Call Joan Cowan  
Seeley Lake, Montana  
(406) 677-2355





# VALLEY MARKET

A MEMBER OF ASSOCIATED FOOD STORES, INC.

One Mile South of Seeley Lake on Scenic 83  
406/677-2121



PRICES EFFECTIVE: SEPTEMBER 14- SEPTEMBER 20

## FOOD FARM

### ATTENTION HUNTERS:

We will be offering the Processing of your Wild Game (Fresh or Smoked), For Salami, Bologna, Polish, Hot & Mild Italian, German & German Garlic Sausages. See our meat Head for details.

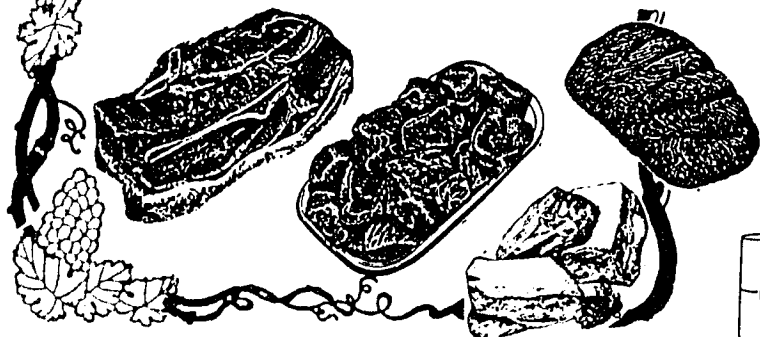
Boneless  
**CHUCK POT ROAST** \$1.29 lb

Boneless  
**CHUCK STEAK** \$1.39 lb

Boneless  
**SHORT-RIBS** \$1.69 lb

Boneless  
**STEW MEAT** \$1.69 lb

(Not to exceed 2% Fat)  
**GROUND BEEF** \$1.39 lb



Western Family  
4-Roll, 2-Ply, Assorted

**BATH  
TISSUE**

### FOOD FARM FALDERAL:

IF YOU DON'T LEARN FROM YOUR MISTAKES,  
THERE'S NO SENSE MAKING THEM.

**ASSORTED  
SQUASH** 19¢ lb



US#1  
**CANTALOUPE** 29¢ lb



US#1  
**MEDIUM MUSHROOMS**



\$1.49 lb

**NEW CROP GOLDEN  
delicious APPLES** 49¢ lb



**MAXWELL  
HOUSE** \$5.89

39 oz Assorted  
Grinds



**Coffee**

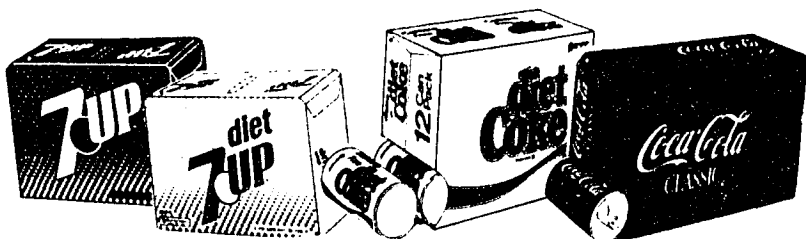


**89¢**

**\$1.39**



Peanut Jumble - Nutty Fudge - Soft Molasses  
Walnut Chocolate Chip



Valley Market Coupon

Valley Market Coupon

12 Pak, 12 Oz Cans  
**CLASSIC COKE, DIET COKE, 7-UP  
& DIET 7-UP**

**50¢ OFF**

\* with the purchase of any 2-(12 Paks)

No Limit.



**\$4.95**

12 Pack 12 oz. CANS  
**RAINIER & RAINIER  
LIGHT BEER**