

PATHFINDER



Vol. II, No. 36

677-2022

"VOICE OF THE VALLEY"

754-2365

January 21, 1988



Artist C.S. Poppenga of Seeley Lake, recently sold this painting to the Wilderness Sportsman's Club of Seeley Lake. The Club will auction the painting during the Seeley Lake 200 Mushers Banquet next Sunday night. Sled Dog races begin this week at Holland Lake Lodge, where mushers will begin a 100-mile jackpot race at 10 a.m. Saturday morning. This first race of the season in the Seeley-Swan area is unique: mushers begin with a "mass start" similar to the races held annually in western Canada. The Seeley Lake 200 Sled Dog Race will begin next Thursday morning at 9 a.m. The Governor's Cup 500-mile sled dog race begins the following week in Helena and the course winds its way to Swan Valley.

Artist begins series about sled dogs

by Suzanne Vernon

C.S. Poppenga—better known to Seeley Lake residents as Carol Bourne—recently unveiled her first painting in a planned series of artwork which will depict sled dogs and the sport of sled dog racing in Seeley Lake.

The pastel portrait titled "Veteran Leader" shows a lead sled dog in harness as he stretches the gangline and casts a steady gaze toward his team members. Poppenga barely had time to explain her latest project before members of the Wilderness Sportsman's Club (sponsors of the Seeley Lake 200 Sled Dog Race) voted to purchase this first painting, which is framed by scenes from last year's sled dog race. The Club will auction the painting at the Mushers Banquet on Sunday, January 31 at the Saloon in Seeley Lake.

Carol believes that many spectators who enjoy watching the mushers and their teams do not fully understand the

role of each dog on a team. She intends to portray a different member of the team each year.

"This is not a one-time thing," she said last week. "I am very interested in continuing the series. Next year I'll focus on the wheel dogs, or the point dogs." She also will look into the possibility of offering prints next year, in addition to the original portraits.

Poppenga takes her art seriously, and often burns the midnight oil as she explores various media at her studio north of Seeley Lake. This past year, she has taken a keen interest in colored pastels.

"Pastels have more pigment than chalk. They have a soft, buttery feel," she explained. "I tend to draw rather than to paint, and the pastels allow me to concentrate on drawing." With pastels, she can communicate emotion through the use of color without distracting from the simplicity of her basic drawings and ideas.

Poppenga is a member of the Wilderness Sportsman's Club and also created the pen-and-ink drawing of Seeley Lake musher Tom Scollick which will highlight the cover of the Seeley Lake 200 Race Program this year.

"It's a good cause, and a good club," she said, explaining that she began considering the idea of the artistic series partly as a fund raiser for the sled dog events.

Vorhauer considers Senate race

According to a *Missoulian* article published last Thursday, local resident Bruce Vorhauer is considering entering the GOP race to challenge Senator John Melcher this year. Vorhauer recently hired a Helena firm to survey Montana residents, the article said.

Results of the survey which Vorhauer hopes will help him decide

Writers Club to record local history

by Suzanne Vernon

A group of Seeley Lake-area writers met last week and decided to begin work on a local history project. Members of the newly-formed Writers Club set goals which include publishing a collection of stories for the Montana Centennial in 1989.

Members volunteered to explore various areas of recent history. Mildred Chaffin will be writing about the Indians and their historical use of the Clearwater Valley and the South Fork of the Flathead; Suzanne Vernon will be taking a look at what life was like 100 years ago in the Clearwater Valley; Herb Townsend will be writing about the early days of logging by the Forest Service and the Anaconda Company; Rod Kvamme will be writing about the history of churches in the area and Nancy Marx will begin writing about the history of guest ranches in the area.

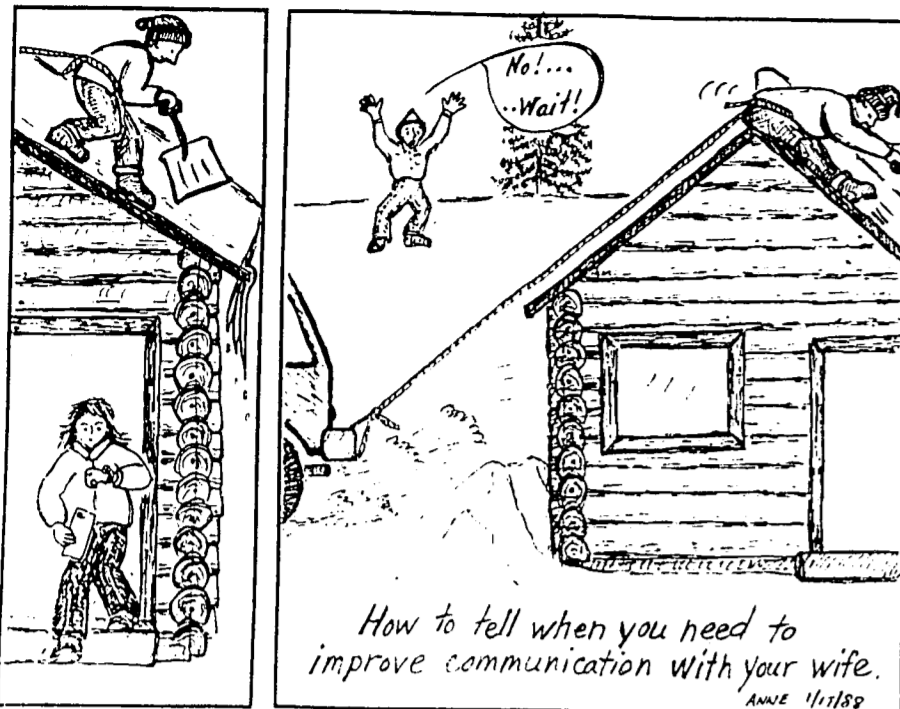
Members of the group also decided that the scope of their interests would not be limited to history. Some members expressed interest in writing non-fiction articles for submission to regional magazines. Rod Kvamme, chairman of the group, offered to explore the possibility of inviting professional writers and historians to Seeley Lake to conduct "mini" seminars.

According to Rod Kvamme, anyone interested in history or having information about any of the above topics is invited to contact one of the Writers Club members or attend the Club's next meeting, scheduled for February 8 at 1 p.m. in the Seeley Lake Community Hall. Residents are invited to eat dinner with the Senior Citizens at noon that same day in the Hall.

whether to enter politics, are expected later this week.

Vorhauer has been a seasonal resident of Sourdough Island on Salmon Lake south of Seeley Lake, though he plans to make the Clearwater Valley his permanent home this year. His parents are full-time residents of the Valley.

Natty Bumpo



Valentine's Day
 Crystal Bell • Cupid Bears
 Heart Jewelry • Lacy Nightshirt
 Trinket Box • Heart Basket

Gifts from the Heart

Kim Blekkenk

AVON

Trends in the Forest Products Industry

An extremely interesting study of the forest products industry has recently been published by the Bureau of Business and Economic Research at the U of M. The study focuses on the years from 1979 through 1985. The years 1980 through 1982 were recession years, so the study presents a "before, during, and after" portrait of the industry relative to the recession.

Based on labor income, forest products was among the hardest-hit industries in the Pacific Northwest, declining some 25% over the period. In contrast, other basic industries in the Northwest recovered from the recession, and showed a decline of only half a percent over the period. (The notable exception is the basket-case economy of Montana, where other basic industries declined 18% over the period.)

Normally, one would expect to see a decline in production of forest products commensurate with the decline in labor income. In other words, the more layoffs there are, the greater the decline in production. However, the key finding of the study is that total production of the industry was essentially unchanged over the period. For example, there was no change in board feet of timber harvested and there was only a 4% decline in the board feet of lumber produced.

This occurred despite a loss of 40,000 forest products jobs in the Pacific Northwest over the period. Obvi-

ously, the forest products industry has become less labor intensive and more productive. As noted in the study, "the wood products industry in 1985 produced more than 90% of its 1979 output with less than 80% of its 1979 employment."

How has this been achieved? In the woods, it has been achieved by gradually moving toward the use of mechanized harvesting systems and grapple skidders. In the mills, it has been achieved by more efficient sawing (such as thinner saw blades and laser saw guides) and the installation of highly automated equipment. In fact, readers may recall various articles in *Pathfinder* on these very subjects. In Montana, productivity has continued to increase during the improved market conditions of 1986 and 1987. This is particularly noteworthy, because producers tend to lose incentive for production improvements when times are good.

Of particular local interest is the finding that, in Montana, there has been a pronounced shift toward dimension lumber, particularly studs, and away from boards and select grades of lumber. In fact, it is estimated that 30% of the productivity gain for lumber workers since 1979 is attributable to increased stud production. In contrast, Pyramid Mountain Lumber in Seeley Lake has moved toward board production and away from dimension lumber—a strategy which has proved highly successful. Apparently, Pyramid has been astutely filling the void created by other Montana sawmills.

—Dick Potter

Country Journal

by Suzanne Vernon

The snow has settled to about 15 inches here on the Summit. The crust is hard enough to support a person on skis pretty well. It's also provided a good opportunity for all the critters to come out of their winter homes and make tracks.

Maybe the abundance of rabbits is what has attracted the coyotes this week. I don't remember seeing so many coyote tracks here in January. Just passing through, maybe? We've also seen lion tracks near the highway this week, and plenty of elk and deer still wintering here, which is also unusual. Folks on Pierce Lake this weekend noticed lots of whitetail deer, though we suspect they'll soon move to greener pastures (would you believe, brown hillsides?).

It seems we're in the middle of winter, yet it is time to plan for spring. The Montana State Extension Office recently announced that it is taking or-

CONSTRUCTION

For any of your log home construction needs, such as shells, roofing, caulking, concrete and remodeling work, contact: Meyer Construction, Box 101, Swan Lake, MT 59911. Call 754-2250.

ders for shrubs, including lilacs and honeysuckle. The latter does quite well here (if you can keep the deer away) and the honeysuckle berries are attractive to birds.

For more information about the state's nursery program and the various trees and shrubs they have available call or write: State Forest Nursery, 2705 Spurgin Road, Missoula, Montana, 59801, phone 542-4244.

Be prepared to order in "bulk." The state offers us cheap prices (\$17/100), but we have to order a minimum of 250 trees!

Mush!

To the Editor:

Our community has just hosted two great and very successful events—the Montana Snowmobile Association convention and the YAMAFEST. We now look forward to the Jackpot Sled Dog Races at Holland Lake this weekend and the Seeley Lake 200 Sled Dog races coming January 28, 29, 30 and 31st.

Community effort and participation will make the dog sled races even more exciting and successful than last year.

Everyone should be proud of these great family events. Hopefully these events will bring bigger and better things for our business people who contribute, support, advertise and sponsor these events. Without these business contributions, the people of our community would not have these great events happening in our area. Please let these businesses know you appreciate them and their efforts by patronizing them and thanking them personally. Please be sure to sign up for the daily cash drawings at the participating merchants.

The dog sled races are receiving publicity all over the lower 48 states and Alaska, and Canada. This race is only two years old and growing by leaps and bounds. It surely will become one of the major races on our continent.

The mushers are spreading the word about our town and race. A musher coming from Arizona spoke these words, even after being told our purse was not even close to what we had wanted, "Hey that's OK, I've heard so much about your great race and the integrity with which it's run and how great and supportive your community is, I just want to come and run that race and see for myself. If it's what I've heard and the people are like they say, it'll all be worth it—win or lose."

That, people, is what you have helped to do. Our community is where it is, thanks to local residents. Seeley Lake is recognized with respect and wonder. People marvel at how a small community can achieve so much and be known far and wide for its hospitality.

Now, the Seeley 200 committee again asks that you put out your signs, your "Welcome Mushers" banners, your musher specials, your hospitality, your friendliness and your attendance at all the great events that will be happening January 28-31. Great winter carnival events will again be sponsored by the Seeley Lake Area Chamber of Commerce.

Television stations will be here, and once again, Seeley will be viewed across the United States. People are saying, "It was so great last year, are we going to be able to do it again?" Our answer is "Yes, and even better!"

The Seeley 200 is a growing event, complete with "growing pains" that all events suffer, but we have the interest of two major sponsors for next year, and they'll be watching our performance this year. We must have a top show to keep this interest.

Let's show all of them and the people of our state, as well as the other states, that this is a class race with a class community.

Please attend these great events and show your enthusiasm! Let's welcome our out-of-towners and our mushers who are coming miles from Canada, California, Utah, Minnesota, Florida, Arizona, Wisconsin, North Dakota, Oregon, Montana and more. Please watch your children around the sled dogs. Please keep your dogs home for their own safety. We had a great and safe race last year, and we must have the same this year.

The mushers will be at the Filling Station 8 pm, January 27. Stop by and get acquainted!

Elinor Williamson
 Public Relations
 Seeley 200 Race Committee

Singletree Saddlery
 (406) 677-2189

Crimestoppers

Between December 12, 1987 and December 14, 1987, two Yamaha Four-wheelers were stolen from Fun Unlimited in Seeley Lake.

The vehicles included a 1987 Yamaha blue and white Warrior and a 1988 Yamaha red and white Blaster.

The vehicles were taken from the Fun Unlimited store through the rear door of the shop. The total value of the

vehicles is over \$5,000. Fun Unlimited is offering a \$500 reward for information leading to an arrest and conviction. Crimestoppers will also pay a reward of up to \$1,000 for information leading to an arrest and conviction. Anyone having information about the crime may contact Sheriff Deputy Lloyd Hallgren or Deputy Scott McDonald.

People wishing to remain anonymous may still be eligible for the Crimestoppers cash reward and may call the Missoula office at 1-721-4444.

COMMUNITY CALENDAR

Community members are invited to submit dates, times and locations of events, meetings and other happenings. Submission deadline: Friday, 6 pm; call 677-2022 or 754-2365.

Events

- Jan. 22, State leaseholders meeting, 7pm, Seeley Lake Elem. Gym
- Jan. 22, Roller Skating, 1-3pm, Swan Valley Elem. Gym.
- Jan. 23-24, Race to the Lake, Jackpot Sled Dog Race, Holland Lake, 10 a.m. both days
- Jan. 28, Fish & Game meeting to discuss big game regs, 7pm, Swan Valley Comm. Hall, Condon
- Jan. 28-31, Seeley Lake 200 Sled Dog Race, 9am each day, Seeley Lake
- Feb. 4, Fish & Game meeting to discuss big game regs, 7pm, Seeley Lake Community Hall.

Other

- Alcoholics Anonymous**
 •Condon: Every Thursday night, Swan Valley Elementary school, 7:30pm
- Seeley Lake: Every Sunday night, mill basement, Seeley Lake, 7pm
- AI Anon & AA**
 •Seeley Lake: Every Wednesday night, REA building, Seeley Lake, 7pm
- Story Hour** at Swan Valley Library: Jan 27, 10:30-11:15am.
- Refuse Disposal Site**, Oct thru April: Weds & Sat, 10am-4pm.
- Swan Lake Library** (Swan Lake): Weds, Sat, 10am-2pm.
- Swan Valley Library** (Condon): Weds, 10am-6pm, Sat, 10am-3pm.

Public Meetings

- Jan. 21, Seeley Lake Elem. School trustees, 7:30pm, school library
- Jan 27, Seeley Lake Water District Board, 7:pm, REA Building, Seeley Lake

EMERGENCY: Dial 911 if you live in Seeley Lake, Condon, Greenough or Ovando. Swan Lake residents dial 886-2324 (Fire, QRU or Search & Rescue) or 1-752-6161 for Sheriff, Highway Patrol.

PYRAMID MOUNTAIN LUMBER INC. Seeley Lake, Montana
 Equal Employment Opportunity Employer (406) 677-2201

Business of the Week

VICK'S WASH HOUSE

Vick's Wash House of Seeley Lake is owned by the Vick family. LeRoy Vick says the building has just undergone a thorough cleaning, and all of the necessary machine repairs and replacements have been made. The coin-operated automatic washers, dryers and showers undergo heavy use during the warmer months. "If it's a hard winter, with pipes freezing, the wash house does very well," LeRoy remarked.

Besides the laundromat facilities and showers, Vick's Wash House offers professional dry cleaning services. All dry cleaning is sent to Missoula, with a turnaround of about 8-10 days and LeRoy says, "our prices are the same as Missoula."

Janice Bernstrauch of Seeley Lake is the manager/attendant, Monday through Friday, from 8 am to 2 pm. She also provides mending and sewing services and takes drop-off laundry. For the convenience of their laundromat patrons, the Wash House sells vending machine detergent, bleach, and fabric softener. Soft drinks, coffee and video games are also available.

Located in the Seeley Lake Maul, Vick's Wash House is open 7 days a week. Winter hours are from 8 am - 10 pm.



A FULL SERVICE BANK
FDIC

1st Valley Bank
 Seeley Lake, Montana 677-2464

BUY AND BANK AT HOME. IT'S GOOD BUSINESS!

The Wilderness Sportsman's Club Presents:

January 28, 29, 30 & 31



Seeley Lake "200" World Championship Mid-Distance Sled Dog Race and Winter Carnival

- **Wilderness Sportsman's Club** will be hosting: Cash Drawings (each morning after dogs leave—tickets at local Seeley merchants); Sled Dog Rides (Saturday & Sunday from 10am-1pm.); Kiddie Dog Weight Pull (Saturday & Sunday at Noon); Adult Dog Weight Pull (Saturday & Sunday at Noon); Kids Sprint Dog Race—4-6 dog teams (Sunday at Noon); Musher's Awards Banquet (Sunday starting at 6pm, dinner at 7pm, The Saloon—\$6.00 tickets available at The Saloon). Note: All daytime events downtown Seeley.
- **Seeley Lake Area Chamber of Commerce** will be hosting: Ice Skating Rink (Saturday & Sunday at Riverview Road Pond); Sledding Hill (Saturday & Sunday above Grade School); Dog Ski Pull (Saturday at 2pm on Seeley Lake).
- **Seeley Lake PTA** will be hosting: Snow Sculpturing (Saturday at Noon at lot next to Chamber building).

For more information, call 677-2686 or 677-2880

NINA NATIONAL NEWS PAPER ASSOCIATION **MONTANA PRESS 187**

PUBLISHER'S NOTICE
 Seeley Swan Pathfinder (USPS 000-919) is published every Thursday by Pathfinder Press, Inc., Timberline Building, Hwy 83, Seeley Lake, MT 59868 (telephone 406/677-2022 or 754-2365). Area served is Seeley Lake and neighboring communities. Distribution is by mail subscription (\$10.50 per year in Missoula, Lake, or Powell County; \$13.00 per year elsewhere in U.S.) and by newsstand sales. Ad deadline is 4:00 p.m. on Friday prior to publication. News deadline is noon Monday prior to publication.

Second-class postage paid at Seeley Lake, MT. POSTMASTER: Send address changes to: Seeley Swan Pathfinder, P.O. Box 702, Seeley Lake, MT 59868-0702.

HARDWARE VALUE OF THE MONTH



CAROL 7.88 White Supplies Last

Heavy-Duty Booster Cables with Angle Clamps for top or side-post terminals, handy 12-ft. cables, tough 10-gauge wire.

QUANTITIES LIMITED

True Value HARDWARE STORES

ROVERO'S
Seeley Lake, Montana
677-2445



Frank Wolfram blindfolds Becky Olson as she prepared for the Blindman's Barrel Race held during the Snodeo events last weekend in Seeley Lake (above). Right—Lisa Price won a new snowmobile suit from Yamaha as the winner in the Ugly Snowmobile Suit Contest held in Seeley Lake Saturday night.



R. Potter photo

This year's Prince of Prevarication: Everett Woodgerd of Missoula. You'd never know it to meet him; he seems like a nice, honest chap.

CHICKEN
Double Front



Lisa Price won a new snowmobile suit from Yamaha as the winner in the Ugly Snowmobile Suit Contest held in Seeley Lake Saturday night.

The Big Lie

Everett Woodgerd, this year's Champion Liar at Yamafest told the crowd the following whopper, and won a snowmobiler's jacket for his effort. For those readers unfamiliar with snowmobiling, the story incorporates liberal (some might say shameful) reference to various models of snowmobiles:

"Once upon a time there was a Toodoo family that had a Formula for almost everything. So, one day when handsome Max Yama felt a cold coming on, he asked Mrs. Toodoo to mix an analgesic.

"Now, she was a little bombed, and Handsome Max always made her a little Excited—so, to make a long story short—she made a mistake, a terrible mistake! Instead of using the SRV Formula, she used the XLV, which was for an aphrodisiac!

"It just so happened that three pretty little snow critters—Kitty, Cindy and Tundra—were taking a safari down the trail the same day. They had fashionable turned-up steel booties—and the cutest rubber undies!

"Max caught up with them just as his medicine took effect. He turned Kitty into a Wildcat. And Cindy couldn't Sprint, so she became a Sport. Then, Max had an Escapade with bashful little Tundra.

"The whole thing was so exciting that they called it a Yamafest!"

Liar's crown snared by Missoulian

The truth shall set you free, but the right kind of lie can win you a prize at Yamafest. The annual Liar's Contest was held last Friday night and the fibbers were out in force. Master of ceremonies Linda Weaver got the show rolling by calling upon last year's winner, young Kevin Connell of Missoula, to re-tell his winning tale of a vintage Packard which was converted to a snowmobile. Kevin returned later to give a knowledgeable dissertation on Polish snowmobiles.

However, Kevin lost his title this year to another Missoulian, Everett Woodgerd. Everett's prize-winning falsehood is presented nearby in its unabridged form.

Cynics probably wonder whether the championship will ever be wrested from Missoula. This is not idle speculation. Everett even beat out a Texan and, as everyone in Montana knows, Texans are world-class liars.

Second place went to Seeley Lake resident Mark Cahoon, who told how he sold a boat to a fellow who wanted a snowmobile—but there was a small problem with the demo ride. Third place (presumably for a third-rate lie) was awarded to Carl Rogers of Great Falls for his heroic capture of a camel while out snowmobiling. Carl even got the camel to pull his snowmobile out of the ditch. Carl also assured the audience that people in Great Falls don't lie. Sure, Carl.



Allen Wolfram nears the finish line in the egg-&-spoon events last weekend during YAMAFEST. He successfully negotiated the barrel race with an egg, in a spoon, in his mouth during Snodeo events last weekend at YAMAFEST. Allen, from Seeley Lake, won the competition for his division.

SUPPORT YOUR LOCAL FIRE COMPANY!



Join the Seeley Lake Volunteer Fire Company Auxiliary. We need your helping hands to prepare food for tired firemen and to help those who have losses due to fires. Your mate need not be a fireman for you to join and help.

Contact Cindy Carlson, 677-2794 or Carla Boulé, 677-2562

MARX CONSTRUCTION

Complete Line of Log Homes
You only need one stop to make the choice!

Rustics of Lindbergh Lake
beautiful hand-peeled rustic look



RUSTICS OF LINDBERGH LAKE, INC.

Rocky Mountain Logs of Hamilton
logical milled uniform logs



Larry Marx, Owner • 677-2555

Plan to attend: Seeley Lake 200 Sled Dog Race "Door Prizes"

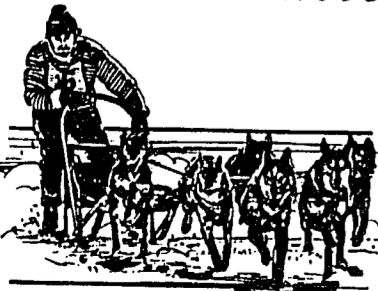
Musher's Awards Banquet

at The Saloon, Sunday, January 31

Banquet: 6-9 pm • Meal Served: 7 pm • Awards

- TICKETS: \$6.00/PERSON -
(limited number of tickets available - must be purchased by January 29)


For more information and tickets, contact The Saloon, 677-9634 or Elinor Williamson, 677-2174



WindWalker Kennels

Racing and Working Sled Dogs

Ron & Deb Ogden
P. O. Box 98
Seeley Lake, Montana 59868
406/677-2616



FULL LINE OF SPORTS DOG AND MUSER SUPPLIES — FEATURING ADANAC EQUIPMENT

We carry a full line of sports dog and musher supplies, including collars, leashes, snaps, ganglines, skijoring rigs, weight-pull harnesses, dog sled harnesses, sleds, parkas, headlamps for mushers and skiers—and much, much more. If we don't have what you need, we know where to find it!

TRAINING AND SELLING: SLED DOGS, WEIGHT-PULL DOGS & SKIJORING DOGS

Yes, we will train your dogs! We'll be selling a few Seppla Siberian Sled Dog puppies this spring. These dogs are hard to find and they make fine working dogs and/or pets. Call us today for your Seppla.

PROFESSIONAL CUSTOM-MADE DOG FOOD

We are working with professionals to improve your dog's dietary requirements. This food is made by us and contains fresh meat (liver, chicken, etc.), vitamins and minerals. It is not a dry dog food. Call us and we'll work up a formula to fit your dog's work schedule and dietary needs.

OUTDOORS

OUTDOORS

Watkins®
SERVED
FAMILY STYLE
SINCE 1868

Those famous Watkins products you remember: Vanilla, Cinnamon, Liniment, Spices and Herbs, are available at your door. Just give me a call.



In Condon Call
 Sherry Maloughney
 754-2260

In Seeley Lake Call
 Linda Niles
 677-2897



Grace LeFebvre, executive secretary for the Seeley Lake Area Chamber of Commerce, was interviewed by Doug Golie of KERR-QRK 92 radio station from Polson during YAMAFEST events last weekend in Seeley Lake (above).

Snowmobile trail closed for OSCR, Feb. 4-6

Attention snowmobilers: The Morrell/Rice Ridge Loop Trail (Route 3 on the Seeley Lake snowmobile map), about 30 miles, will be closed by the Forest Service Thursday, February 4, at 4 p.m. through Saturday, February 6, for the OSCR Cross-Country Ski Marathon. This closure affects the east side of Highway 83 on a popular trail between Seeley Lake and Holland Lake.

Snowmobilers can inquire locally about groomed and ungroomed trails on both sides of the highway. The race closure affects only a small portion of the snowmobile trails in the Seeley Lake area. But Dan Cainan, a member of the Driftriders Snowmobile Club, cautions people about traveling between Holland Lake and Seeley Lake on the west side of the highway. The trails are unmarked and ungroomed and snowmobilers should inquire locally about the route or go with someone who knows the way.

Each year snowmobilers from the area help with five aid stations along the race course providing munchies and hot beverages for the racers.

"There are people who like to build tension between skiers and snowmobilers. I like to tear that tension down," Cainan says. "There is plenty of room for everyone and the trails belong to all of us."

The OSCR marathon course, starting at 4,200 ft. and rising to 5,200 ft., offers a real physical challenge and is 90% skateable; or it provides a good day's tour with views of the Swan Range during the first half of the loop and the Mission Mountains on the second half.

Racers must check-in at the Seeley Lake High School between 7 a.m. and 9:00 a.m. The race begins at the airport at 10 a.m. sharp and ends at the high school (showers available - bring your own towel).

There are five aid stations along the way. Racers can write or call the Seeley Lake Chamber of Commerce for applications and maps; OSCR, Box 516, Seeley Lake, Mt. 59868; phone 406 677-2880.

A 10 Km race begins at 11:00 a.m., sharp, from the high school with check-in at the high school at 10:30 a.m. A free beginner ski clinic will be held at the high school from 11:30 to 12:30 with a fun race following. An awards banquet will be held at the Seeley Lake Community Hall at 5:30.

For more information: Lew Mitchell - 677-2500, Anne Dahl - 754-2538, Chamber of Commerce - 677-2880.

MEYER CONSTRUCTION
 Box 101, Swan Lake, MT 59911
 754-2250

Have small cat—looking to log private land. If you have any that needs thinning out, call me.

Sportsmen to discuss new hunting regs

The Wilderness Sportsman's Club will host a public meeting to discuss proposed changes in the 1988 big game hunting regulations on Thursday, February 4, at 7 p.m. in the Community Hall in Seeley Lake.

Sportsmen's clubs all over west-central Montana will also be hosting similar public meetings in the next few weeks. A meeting is scheduled for January 28 in Condon (see related story) and February 3 in Lincoln.

Representatives from the Montana Department of Fish, Wildlife and Parks will discuss changes in the hunting regulations which will affect elk, deer, black bear, and mountain lion hunters in western Montana and special permit regulations.

Scheduled meetings in other communities include:

•Condon, Thursday, January 28, 7:00 p.m. Swan Valley Community Hall

•Lincoln, Wednesday February 3 at Lambkin's Cafe at 7:30 p.m.

•Missoula, Tuesday, February 9, at the Fish, Wildlife & Parks headquarters, 3201 Spurgin Road. An open house meeting is scheduled from 4-9:00 p.m..

The public is encouraged to attend and participate in the meetings.



Jim Richards gave some last-minute encouragement to six-year-old Jamie as she prepared for the barrel race during last weekend's YAMAFEST in Seeley Lake.

Double Front Chicken

When going to Missoula, meet your friends at our cafe

543-6264

FRESHNESS



MONTANA QUALITY!

CARLSON Refrigeration Service & Repair

Prompt Service

Call August Carlson
 Seeley Lake
 (after 3 pm & weekends)

JANUARY CLEARANCE

1/2 OFF
 Jewelry • Mugs • Beeswax Candles

20% OFF
 Wooden Giftware • Crystal • Games • Dolls

Many Other Items "As Marked"

SEELEY LAKE PHARMACY
 677-2424



Mike and Betty Tingley from Missoula were familiar faces in the crowd during YAMAFEST last weekend. They have helped organize and support dozens of outdoor events in Seeley Lake. YAMAFEST activities in Seeley Lake last weekend drew an estimated 500 people to the area both days.

Finest in the Valley
Hungry Bear
 Chalet

WINTER HOURS
 Open 5 pm - 10 pm
 Closed Monday & Tuesday

Complete Steak & Seafood Menu
 Prime Rib
 Saturday & Sunday
 (We serve USDA Choice only)

Try a Taco Pizza

Jack & Laura Bogar • MM 38-39, Condon, 754-2240

Loggers Truckers

WHY PAY MORE?

STARTERS • ALTERNATORS • GENERATORS
 Rebuild/Repair/Replace — Guaranteed
 (American & Foreign Cars & Trucks)

Call Now!
 677-2549
 Bob Lowden, Owner
 10 Years Experience

SEELEY LAKE STARTER & ALTERNATOR REPAIRS

The Sponsors of YAMAFEST

Yamaha Motor Corporation, U.S.A.
 Mike Tingley's (Missoula), Ronan Sports Cycle (Ronan)
 Fun Unlimited (Seeley Lake & Columbia Falls), Al's Cycle Center (Hamilton), Cycle Center (Missoula), Seeley Lake Area Chamber of Commerce, Seeley Lake Driftriders, Seeley Lake Lion's Club, Seeley Lake Quick Response Unit, SELI SENCI Senior Citizens

would like to Thank the Many
Volunteers, Clubs, Organizations, Merchants, Townspeople, Participants

who helped to make the
1988 Seeley Lake YAMAFEST
 a great success and lots of fun.



Mount Ovando 4-H News

by DeAnna Dreyer

The 4th meeting of the Mount Ovando 4-H Club was called to order by President Bryan O'Conner at 7:00 pm on Wednesday, January 6 at the Ovando Church Building.

We answered roll call with a money making idea. It was decided to have a slave auction and to raffle a gift certificate to Tidyman's.

CHICKEN
Double Front

We received thank-you notes from our 4-H Grandmothers. Some very special grandmothers gave us donations while others gave gifts.

For old business, we discussed the drug program, scrapbook and the trophy case. Reports were given on meat classes, Augusta, Helena and Sunny Slope judgings, grandmothers, cooking classes and Christmas tree decorating, sledging party, basketball concessions, and steer weigh-in. We discussed 4-H-er of the month. It was decided that Jody Hicks represent our club for 4-H-er of the month.

January 12 is the Meat ID test. January 16 is the KMON Livestock Judging in Great Falls.

Council Candidates

The first Seeley Lake Community Council was appointed by the county commissioners last fall. According to the county elections office, most of the incumbents have decided to seek election in April, including: Bud Johnson, Kent Brown, Jeff Macon, Addrien Marx, and Mel Ketland. Also seeking election is Norm Baier of Seeley Lake.

The six announced candidates are "shoo-ins" since there are only six elected seats on the Council. The seventh seat is filled by appointment.



Pipinich will run for State Senate

Bob Pipinich, of Marshall Grade, announced today that he will run as a Democrat for the State Senate in District #33.

The District covers Eastern Missoula County, including the Seeley-Swan area, Granite County, and the Western parts of Anaconda and Deer Lodge counties. Currently the District is represented by Senator Jack Haffey (D-Anaconda). Haffey recently announced his decision not to seek re-election.

Pipinich, 52, who has lived in the Marshall Grade area since 1980, is an Anaconda native where he worked at the smelter there for 20 years and owned a business until moving to the Missoula area. He is presently employed as an instrument mechanic at the Stone Container operation in Missoula County.

Pipinich, in announcing his candidacy, said, "I'm concerned about the Montana economy and believe that we need to preserve the good paying jobs and small family farms and ranches that have built this state. In addition, we need to carefully assess our statewide efforts at economic development as they relate to the maintenance of these basic industries as well as encouraging the growth of new industries." Pipinich cited his experiences as both a mill worker and the owner of a small business as an asset in his understanding of these critical issues.

Pipinich has served for 9 years on the Boy Scouts Councils of Anaconda and Bonner. He added that, "I have hunted and fished in the Georgetown Lake and Rock Creek areas all my life and am very concerned about the interest of sportsmen. Protecting the quality of our outdoor recreational activities while encouraging economic growth is a challenge that I really accept."

Pipinich is married to the former Luella Buck, a Missoula native. They have six children; Gene 30, Judy 28, John 26, Jolene 24, Tim 21, and Nick 16.

RICH REAL ESTATE
Properties • Photocopies • Notary

Cozy Homes • View Lots
Tracts on Water
Come Look!

C. B. RICH 677-2467

COMMUNITY

Furor grows over state lease fees

There is a new group in town—the Seeley Lake State Leaseholders Association. The group has been formed in response to staggering rental increases recently imposed by the state on its homesite and cabin-site leases. According to the spokesman for the group, Tim Tanberg, there could be as many as 150 leaseholders affected in Seeley Lake. Tanberg is concerned that many of them may not be aware of the fee increases, since only those leaseholders whose leases expire this year have been notified of the increases.

According to Tanberg, annual rental payments for virtually every state lease have been, or will be, revised upward. In the past, annual payments have generally been about \$150. He cites an extreme case, involving a Placid Lake leaseholder, where the annual rental has now been increased to \$2720, an 1800% boost. In Tanberg's case, which appears to be more typical, the rental was increased from \$150 to more than \$400.

The Department of State Lands has taken these actions apparently in response to a statute passed by the legislature in 1983. That statute calls for annual rentals equivalent to 5% of the land's market value. Tanberg questions the way in which the Department has appraised the various tracts, claiming the statute requires exclusion of any improvements, such as buildings, from the appraised value. Yet, there appear to be cases where the exclusion has been ignored. Moreover, according to several Seeley Lake leaseholders, many of the cabin-sites and homesites have unknown boundaries, making appraisal impossible. They also point out that leased land is less valuable than deeded land because of various restrictions imposed by the state and, also, because it is virtually

impossible to obtain bank financing for improvements on leased land.

Tanberg presented a list of grievances, on behalf of the Leaseholders Association, to the Seeley Lake Community Council on Monday night. In addition to questioning the appraisal method, Tanberg believes that constitutional rights of due process have been violated. Specifically, he feels that new rental rates will have to be implemented simultaneously for all leases, instead of being staggered as individual leases come up for renewal over the next several years.

The Council acted swiftly in support of the Association. A resolution was unanimously adopted calling for the Council to work with the Association: 1) to seek an immediate moratorium on new lease fees until the next legislature has had an opportunity to review the matter; 2) to seek more equitable lease fees and/or a program for leaseholders to have the option to buy their land on equitable terms. The resolution also calls upon the county commissioners for assistance in reaching these objectives.

The Council appointed a subcommittee to attend a meeting of area leaseholders set for 7 p.m. on Friday at the Seeley Lake Elementary gym. Tanberg has arranged for Dennis Hemmer, Director of State Lands, to be present at that meeting.

Last Thursday, Tanberg, along with local leaseholder Ted Linford, convened a meeting of leaseholders to discuss the situation and to begin drafting a letter to Hemmer, the governor, and other state land officials. That meeting led directly to the formation of the Leaseholders Association. Tanberg plans to go further, though. "I hope to get in touch with some of the other groups (such as those in Kalispell and the Bitterroot) and form a statewide association."

Cornucopia by Michele Potter



So, you still have some of that holiday roasted turkey in the freezer. Or, maybe because turkey has been such a good buy, you're planning another turkey dinner soon. With the prices so low, it's really foolish not to take advantage of this good-for-you lean meat.

This recipe for Turkey Vegetable Soup is a main-dish soup for two and has only 230 calories per serving.

Turkey Vegetable Soup

- | | |
|----------------------------------|--|
| 1 tablespoon butter or margarine | 1 can (10-3/4 ozs) condensed chicken broth |
| 1/3 cup chopped onion | 1 soup can water |
| 1/2 cup chopped celery | 2 tablespoons dry barley |
| 1/3 cup sliced carrot | 1 cup chopped cooked turkey |
| 1/8 teaspoon ground thyme | 1 tablespoon chopped parsley |

In 2-quart saucepan over medium heat, in hot butter, cook onion, celery and carrot with thyme 2 minutes or until tender. Stir in broth, water and barley. Reduce heat to low; simmer 30 minutes, stirring occasionally. Stir in turkey and parsley; simmer 5 minutes longer. Makes 3 cups or 2 servings. Recipe compliments of Campbell Soup Company.

VALLEY MARKET
677-2121 or 677-2122



FOOD FARM

Welcome RACE TO THE LAKE Musers!

When does three plus one equal five?



WHEN IT'S THE BIG SPIN BONUS!

Now 3 Non-Winning Montana Lottery Tickets Can Get You Into The Big Spin!

It's the Montana Lottery's Big Spin Bonus! With this free coupon you can enter the Lottery's Big Spin with only three Lottery tickets! Just clip this coupon and mail in with three 7♦11♦21 or Cabin Fever '88 non-winning tickets.

Coupons also available at Lottery Retailers
No limit on number of entries!



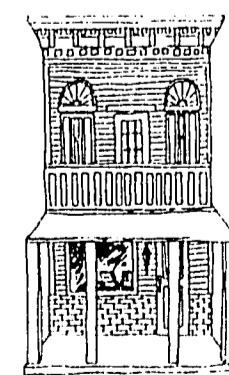
CABIN FEVER '88 No Cash Value **\$2**

BIG SPIN BONUS! **Lottery Montana**

This coupon can be used in place of two non-winning Lottery tickets. Simply place this coupon and three non-winning 7♦11♦21 or Cabin Fever '88 tickets in your next Big Spin entry envelope.

Limit: One coupon per Big Spin entry.

ELECTRIC AVENUE BOOKS



Open 7 Days a Week

406-837-6072
490 Electric Avenue...Box 5
Bigfork, Montana 59911

Seeley Lake Fireman's Ball "Live Music" Moonlight Express

February 13 - 9pm to 2am - Seeley Lake Community Hall

\$7.50/person or \$10.00/couple - Tickets Available from Auxiliary Members and at the Door

WE NEED YOUR SUPPORT! For tickets & information, call Cindy, 677-2794 or Carla, 677-2562 **COME JOIN THE FUN!**

YELLOW ROSE ENTERPRISES

REMODEL PAINTING CONCRETE

677-2778

Cabinetry • Home Repair
Pole Buildings • Drywall

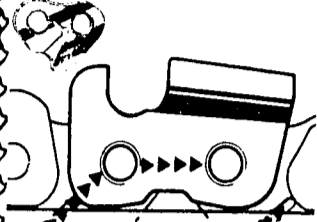
Dave and Nanci Marx

Log Oiling • Metal Roofs
Garages • Decks-Porches

SWAN VALLEY

STIHL Oilomatic®

The Pro-Designed, Pro-Preferred Saw Chain



Designed for fast cutting and easy maintenance. All Stihl saw chains feature the Oilomatic Drive link which channels oil to the critical friction and wear points. Stihl. The saw chain for pros that non-pros appreciate.

Willy Bill Sports
677-2213



PTA sponsors roller skating at Swan

Swan Valley PTA members have once again organized a few roller skating sessions in the Swan Valley Elementary school gymnasium. They began the roller skating program last winter after the project was endorsed by school board members. Students are asked to use skates that will not scratch the floor.

The gym will be open for roller skating from 1 p.m. to 3 p.m. on the following dates: January 22, February 15, March 5 and 19, and April 9. For more information contact Gerri Terrillion, 754-2480.

Cow elk season to end in Swan

by Suzanne Vernon

Residents of the Swan Valley would like the opportunity to see more elk, according to fish and game managers. One way to accomplish that is to close the cow elk hunting season in the Swan.

Shawn Riley, wildlife biologist from the Kalispell Department of Fish, Wildlife and Parks, will host a public meeting in Condon next Thursday night (January 28) to discuss the new hunting regulation proposals with area residents. The meeting begins at 7 p.m. in the Swan Valley Community Hall near Condon.

Riley visited with sportsmen here last year and feels that Swan Valley residents will support the cow elk season closure.

"That's what we heard last year. They want more opportunity to kill an elk. First, we are going to have to raise a few more elk. There'll be some trade-offs, but we can't have our cake and eat it too," he said.

The Swan Valley is one of only two areas in Montana where sportsmen could kill a cow elk without a permit during the first week of general hunting season. Riley said that in addition to closing that cow season here, only 25 cow elk permits would be issued for the Swan hunting district.

Biologists are proposing a few other changes in big game regulations. In Lincoln County and the Thompson Falls area, the bull elk hunting season will be 12 days shorter than the general season. Those regulations will not affect the Swan Valley this year.

The mountain lion quota for the Swan Valley will be increased by one cat, Riley said. Other changes include changes in the boundaries for mountain lion hunting in the South Fork area inside the Bob Marshall Wilderness.

COUNTRY THINGS

Winter Hours
Mon•Thurs•Fri•Sat
9:00 am—5:00 pm
Closed Tues•Weds•Sun

SWAN SONG

Harold K. Older

MISSOULA—Harold K. Older, 74, of East Missoula, died of natural causes Friday, January 15, at Community Medical Center.

A former Swan Valley resident, Older served as deputy sheriff at Condon for nine years and was recently honorary grand marshal for the Swan Valley Fourth of July parade.

He was born December 27, 1913, in Roundup to Mr. and Mrs. Bert V. Older.

Mr. Older was in the U.S. Army for three years before enlisting in the Air Force before World War II. He served in Japan in the Third Rescue Squadron and flew 31 missions over Germany as a top turret gunner in a B-17. He was awarded the Distinguished Flying Cross, Air Medal with Three Oak Leaf Clusters and European Theater of Operations ribbons.

After World War II, he served with the Strategic Air Command at Fairchild Air Force Base in Washington, where he was a line chief for the 92nd Bomb Wing.

Following his retirement in 1957, Mr. Older moved to the Swan Valley where he received several commendations from the community for his work as deputy sheriff.

He was preceded in death by his wife, Bessie, two brothers and two sister.

Survivors include a sister, Beryl Ridenour, Marshalltown, Iowa; and 11 nieces and nephews.

Funeral services were held at 1 p.m. on Wednesday, January 20 at the Church of Jesus Christ of Latter-day Saints Stake Center in Missoula. Pallbearers were John Breuer, Larry Weatherman, John Moe, Jay Havenman, Herbert Styler and Donald Guizzo. Burial was at the Missoula Cemetery, under the direction of Squire Simmons & Carr Funeral Home.



REALTOR • MLS

Seeley Swan Realty

JEFF MACON — Broker
(406) 677-2828
Box 501 • Seeley Lake, MT 59868

PIZZA!!
Hungry Bear

Glen's AUTOMOTIVE SERVICE

Monday thru Friday, 8:00 am to 6:00 pm
Highway 83 South, Seeley Lake



Condon-Swan Valley QRU members and volunteer firemen posed for a photo last weekend. Left to right are: QRU members Kathy Koors, Maynard Freyholtz, Ellie Greenough, Joyce Himes, Lynn Shoup and Bill Shoup (also a firemen). Members of the Swan

Valley Volunteer Fire Company, left to right: Rick Birdwell, Rollie Matthew, Dan Hamilton, Larry Parker, Lee Anderson, Dean Himes, Paul Swinson and Curt Nebel. Not pictured: Sue Holmes, Dan Maloughney, Ronnie Matthew (QRU), and Bill Anderson and Lloyd Hahn (firemen).

A proud day in the Swan

by Suzanne Vernon

Volunteer firefighters and members of the Condon-Swan Valley Quick Response Unit moved their newly acquired emergency vehicles into the new Swan Valley Fire Hall last weekend. According to Bill Shoup, who is active in both groups, "It's a proud day in the Swan."

Shoup expressed the feelings of all of the volunteers who posed for a photo on Sunday afternoon. And for good reason. The new fire hall, the fire truck, tanker and the new QRU emergency medical vehicle were made possible only because of generous financial contributions from Swan Valley residents, and hard work that was, for the most part, donated.

In all, more than \$28,000 was contributed by local residents and has been used to purchase materials for construction of the new fire hall. In addition, the land where the fire hall is located was donated by Dale and Karen Conley of

Salmon Prairie. Bob Ford, Swan Valley resident, donated a 1500-gallon water tender truck. A completely operational fire truck was purchased from the Ferndale Fire Department with funds raised last summer. Approximately \$7,000 worth of firemen's coats, pants, helmets and oxygen tanks was acquired from the San Diego Fire Department at a cost of less than \$100, thanks to efforts made by John McDonald, brother of Swan Valley Deputy Sheriff, Scott McDonald.

The new QRU vehicle was purchased earlier this year, thanks to donations from local residents, businessmen and loggers which added up to more than \$3,000. The vehicle was finally "made road-ready" in recent weeks, and is now complete with new paint, which was also donated by a local resident.

Emergency services in the Swan Valley have always been provided by volunteers, with the exception of emergency helicopter teams who work for area hospitals. Members of both the QRU and the Swan Valley Volunteer Fire Company believe that services can continue on a volunteer basis, especially

in light of the tremendous community support shown this past year.

To date, thirteen Swan Valley firefighters have completed their necessary fire training. Sometime next month, the Fire Company will begin another recruiting campaign, with training sessions to be offered for both current and new members. A major fund raiser to help cover 1988 operating costs will be held this spring. Meanwhile, firemen meet on the last Wednesday of each month at 7 p.m. in the new Fire Hall. For more information about joining the Swan Valley Volunteer Fire Company, contact Paul Swinson, 754-2296. Fire Chief is Rollie Matthew and Curt Nebel is secretary/treasurer for the organization.

Members of the QRU are sponsoring classes in CPR and Advanced First Aid, which begin this week. The QRU's main fund raiser is held during the Fourth of July celebration near Condon each summer.

Condon-Swan Valley QRU members respond to medical emergencies which occur from the Summit north to Goat Creek. The Seeley Lake Ambu-

lance is called out for nearly all of the serious medical emergencies in the Swan, with assistance from Life Flight or Alert helicopters in Missoula and Kalispell usually available.

Swan Valley residents whose telephone numbers begin with a "754" prefix can dial 9-1-1 to contact emergency services. Swan Lake residents whose phone numbers begin with an "886" prefix are NOT connected to the 9-1-1 paging system and should contact their emergency services personnel by dialing 886-2324 or their Sheriff's Department at 1-752-6161.

1987 Emergency Calls
Swan Valley

Medical Assist — 65 calls

(15 people transported to hospitals by emergency helicopter; 30 transported to hospitals by ground ambulance.)

Fire Calls — 5

(Included structure fires and grass fires. Does not include forest fires as reported through the Condon Work Center.)

January 23 & 24

"Race to the Lake"
Holland Lake's First Sled Dog Race
Jackpot Race + Donated Prizes

Holland Lake LODGE

Starts and Finishes at Holland Lake Lodge
100 miles (50 miles each day)
Starting time: Saturday, 10:00 a.m.

Meet the Musher's Saturday Night at Holland Lake Lodge!

PHOTOCOPY SERVICES
Pathfinder • 677-2022
(Timberline Building — next to 1st Valley Bank)

SCHOOLS

SCHOOL SPORTS

BOYS BASKETBALL

Seeley Swan High School

January 21, 4:00 pm
Seeley at Hellgate (J.V.)

January 22, 6:15 pm
Valley Christian at Seeley

January 23, 6:15 pm
Seeley at Alberton

January 26, 6:00 pm
Seeley at Big Sky (J.V.)

January 29, 6:15 pm
Drummond at Seeley

January 30, 6:15 pm
Seeley at Arlee

BASKETBALL

Swan Valley Elementary School

January 21, 4:30 pm
Swan Valley at Potomac

February 2, 4:15 pm
Seeley #2 at Seeley

GIRLS VOLLEYBALL

Seeley Swan High School

January 22, 6:00 pm
Seeley at Arlee

January 23
Seeley Tournament
with Arlee/Charlo/Drummond

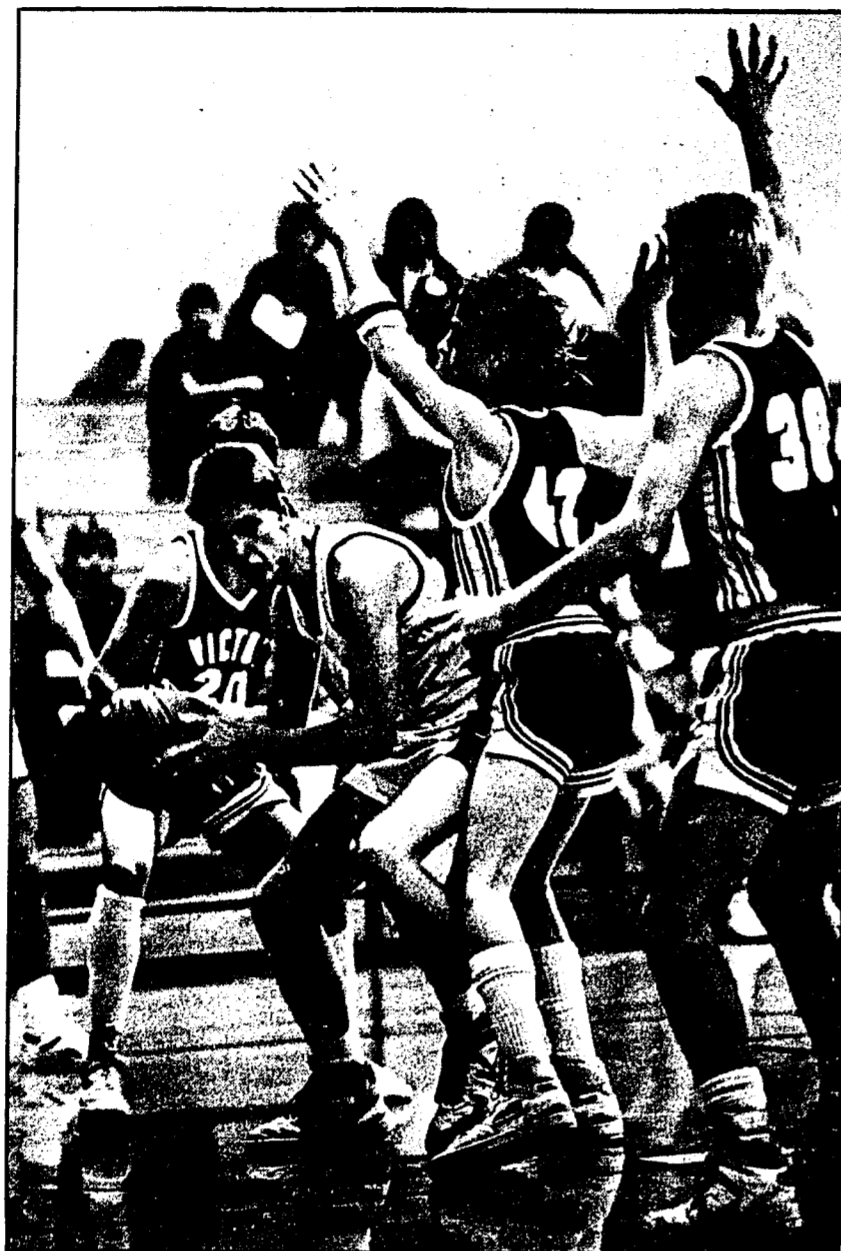
January 29, 5:00 pm
Seeley at Drummond

January 30
Charlo Tournament



A non-profit
consumer-owned
Cooperative

Missoula Electric Cooperative, Inc.
1700 West Broadway
Missoula, Montana 59802
406/721-4433 or 1-800/352-5200



Jeff Fitzgerald drew a crowd as he drove for the bucket during the Blackhawk game here against Victor last Saturday night.

Hawks down Pirates

by Billie Copenhaver

Saturday night the Seeley-Swan Blackhawks shut the Victor Pirates

down 68-40. The Blackhawks now have a record of 6-2.

The Hawks' scoring was led by Joe Bender with 21 points and Jeff Fitzgerald with 12. Eric Trueblood had 11 points, leading the Pirates. Trueblood was Victor's only player in double figures, while the Blackhawks had three.

Lady Hawks downed by Tigers

by Sandy DeLeo

Saturday the Lady Hawks went to St. Regis expecting a victory, but they failed to accomplish this feat. Poor serving and spiking and lack of communication is what lost the game for the Blackhawks.

The final scores of the games were 15-4 and 15-6.

Lady Hawks defeated by Pirates

by Terry Bartlett

In volleyball, the Lady Blackhawks were defeated by the Victor Pirates. The girls started the first game of the match strong, but this didn't prove to be a victory.

Although the Blackhawks were defeated, Sandy DeLeo, Chris Kell, and Tracey Terrillion had one kill each. Tommie Dreyer led the game with four aces in her overall serving. The Lady Blackhawks have still not won a match, but all of the players still have a positive attitude toward the upcoming matches.

Blackhawks fly high over Lynx

by Dustin Gordon

Friday, January 15, the Blackhawk boys basketball team beat the Lincoln Lynx by a score of 82 to 64 in Lincoln.

This victory doesn't come as a surprise to the 6-2 Hawks, but maybe to the rest of the state. In the preceding weeks, the *Missoulian* "C" Power poll 6-0 Lincoln was rated #9 in the state, while the Hawks brought up the rear at #20. This 15-point victory over #9, and last week's victory over #6 in the state should have a few heads turning.

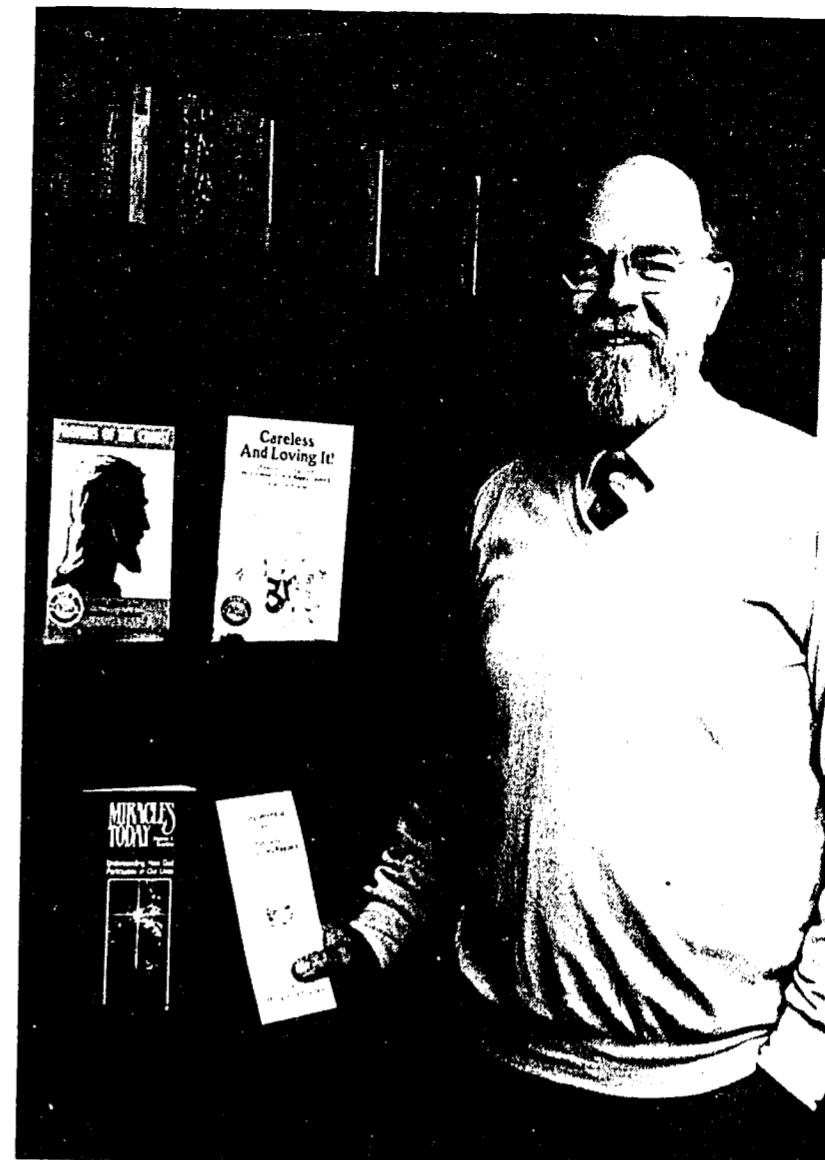
Local writer's books now on tapes for blind

At the request of the Montana State Library, Pastor Rod Kvamme of Seeley Lake has recently completed the recording of his three books. They are entitled *Profiles of the Christ*, *Careless and Loving It*, and *Miracles Today*.

The State Library has a special service to visually and physically handicapped readers. Anyone who either cannot read normal print or cannot hold a book or turn its pages is eligible for this free service. Cassettes, recorders and even postage are provided at no cost to the user. 4700 people are presently signed up for this service. The large library includes hundreds of volumes and has a growing section of Christian literature.

In a thank you letter following the recording, Sheena LaMere, Volunteer Coordinator wrote: "The inspiration, intelligence, humor and challenge of your books will be most welcomed by our library users. The demand for religious materials is great and your books will be enjoyed by hundreds of people across the state (and will also be available for loan to persons nationwide)."

Those enrolled in other states may request titles from the Montana Library. Anyone desiring more information may write to the Montana State Library, Division for the Blind and Physically Handicapped, 1515 East Sixth Avenue, Helena MT 59620.



Pastor Rod Kvamme recently finished recording his books for the Montana State Library, which will offer cassettes of the books to visually and physically handicapped residents of Montana



By
Laura
Bogar

FOOD FOR THOUGHT

... You can cut frozen bread dough into pieces and shape it into rolls. Dip in butter, sprinkle with sesame or poppy seeds, place in a greased cake pan. Let rise; bake 25 minutes at 350 degrees.

... Looking for a different lean meat? Consider rabbit (5-10% fat), venison (2.2%) or pheasant (3.25%).

... Easy way to marinate small pieces of meat or fish—shrimp or scallops, for instance—is in a plastic bag. It's easy to turn food in the seasoning liquid.

... In Italy, Provolone cheese for aging is only made from January through April, sometimes May. When the cows return to the grazing fields, their milk has a different flavor.

... Fun for a party: baked potatoes with an assortment of toppings—from feta cheese and anchovies to spicy tomato sauce or chili, from cheddar and bacon to garlicky cheese and chopped almonds.

... Fun for a party: bring the crowd to HUNGRY BEAR CHALET (Milepost 38-39, Condon, 754-2240). We'll prepare special dishes for you or you can order from our great regular menu.

Hungry Bear
Chalet



Students honored for All-State Athletes

Seeley-Swan High School students, Darren Baretta, Debbie Johnson and Billie Copenhaver have been named as Academic All-State Athletes by virtue of lettering in a school sport and achieving 3.5 or better grade point in school during fall quarter.

Darren Baretta, son of Dan Baretta and Geri Netheron of Seeley Lake, lettered in cross-country; Debbie Johnson, daughter of Dennis Johnson of Seeley Lake and Pat Johnson of Missoula, lettered in basketball. Billie Copenhaver, daughter of Larry and Ann Copenhaver of Seeley Lake, lettered in basketball.

PASSAGES

Pastor Rod Kvamme
Seeley Lake

During my year as student pastor, the wife of the church custodian taught me to sing a duet with her in Norwegian. The English translation was this: "A smile always comes back to you. Only try it and you will see that it works."

God operates with that same kind of optimism. He smiled on the world when He created it all very good. His smile was brightest when He presented the world with the best gift he could offer—the gift of His only Son, Jesus.

The world didn't receive the gift well. Sneers and snarls outnumbered the smiles. In spite of that, God smiled a bright Easter morning after the awful darkness of the previous Friday.

All that God seeks is the return of His smile. Think of the many ways He has smiled upon your life. Life at its best is simply a matter of returning God's smile.

Today, don't pray with folded hands, bowed head and closed eyes. Just look up and smile. God will get the message.

Bible backup: *Philippians 4:4-5* "Rejoice in the Lord always; again I will say, Rejoice...The Lord is at hand."



677-2677

Bonnie Connell
Owner-Stylist

Tuesday thru Friday, 9-5
(other times by appointment)



matthew brothers construction

Residential & Commercial Construction

**Remodeling
Custom Homes**

Log • Frame • Metal

Excavation • Sewer Systems

Free Estimates


Ron Matthew Rollie Matthew
754-2430 754-2401

Box 2301 - Condon - Montana 59826

SEELEY LAKE ELEMENTARY SCHOOL

MENU - WEEK OF JANUARY 25

<p>Monday, January 25</p> <p>Tuesday, January 26</p> <p>Wednesday, January 27</p> <p>Thursday, January 28</p> <p>Friday, January 29</p>	<p>Swiss Steak</p> <p>Chicken Patties</p> <p>Spaghetti</p> <p>Pocket Bread with Hamburger</p> <p>Nachos with Cheese & Hamburger</p>
---	---



721-4417

1112 North Russell, Missoula, Montana

Saturday, January 30, Noon


PTA-Sponsored Snow Sculpturing
Lot next to Seeley Lake Chamber Building

Saturday, January 23

Boys Basketball — Home Games

Eagles vs. Avon at 10:00 a.m.

Eagles vs. Elliston at 2:00 p.m.



TODD'S
Custom Leather

562-3353

*We'll be set up in Seeley Lake during
the 200 Sled Dog Race. Come see us!*

Seeley Swan
PATHFINDER

SUBSCRIBE... and SAVE \$\$\$

(Local subscribers save 1/3 off the newsstand price.)

Mailed to:	1 Year (52 issues)	6 Months (26 issues)
Missoula, Lake, or Powell County	10.50	6.00
Elsewhere in U.S.	13.00	7.00

Yes! I want to subscribe to the PATHFINDER. My check or money order is enclosed. Send my subscription to:

Name _____

Street or P.O. Box _____

City _____ State _____ Zip _____

Please indicate if:
New Renewal Gift

Send payment with this coupon to:

PATHFINDER
P.O. Box 702
Seeley Lake, MT
59868

1st Valley Bank • Seeley Lake • MT

Consolidated Report of Condition of 1st Valley Bank
of Seeley Lake, Montana and Foreign and Domestic Subsidiaries, at the close of business on December 31, 1987, a state banking institution organized and operating under the banking laws of this state and a member of the Federal Reserve System. Published in accordance with a call made by the State Banking Authority and by the Federal Reserve Bank of this District.

ASSETS		Dollar Amounts in Thousands	Mill. Thou.
1. Cash and balances due from depository institutions:			
a. Noninterest-bearing balances and currency and coin		622	0.6
b. Interest-bearing balances		1,072	1.1
2. Securities (from Schedule RC-8)		277	0.3
3. Federal funds sold and securities purchased under agreements to resell		1,870	1.9
4. Loans and lease financing receivables:			
a. Loans and leases, net of unearned income (from Schedule RC-4)		1,636	1.6
b. LESS: Allowance for loan and lease losses		(110)	(0.1)
c. LESS: Allocated transfer risk reserve		(63)	(0.1)
d. Loans and leases, net of unearned income, allowance, and reserve (item 4, a minus 4, b and 4, c)		1,463	1.5
5. Assets held in trading accounts		1,618	1.6
6. Premises and fixed assets (including capitalized leases)		318	0.3
7. Other real estate owned		10	0.0
8. Investments in unconsolidated subsidiaries and associated companies		100	0.1
9. Customers' liability to this bank on acceptances outstanding		100	0.1
10. Intangible assets (from Schedule RC-9)		26	0.0
11. Other assets (from Schedule RC-7)		2,211	2.2
12. a. Total assets (sum of items 1 through 11)		8,211	8.2
b. Losses deferred pursuant to 12 U.S.C. 1823j (from Schedule RC-10)		(10)	(0.0)
c. Total assets and losses deferred pursuant to 12 U.S.C. 1823j (sum of items 12 a and 12 b)		8,201	8.2

Liabilities

13. Deposits

13.a. In domestic offices (sum of totals of columns A and C from Schedule RC-E)

(1) Noninterest-bearing

(2) Interest-bearing

13.a.(1) 1,029

13.a.(2) 3,815

13.a.(1)+(2) 4,844

13.b. In foreign offices, Edge and Agreement subsidiaries, and IDBs

(1) Noninterest-bearing

(2) Interest-bearing

14. Federal funds purchased and securities sold under agreements to repurchase

15. Demand notes issued to the U.S. Treasury

16. Other borrowed money

17. Mortgage indebtedness and obligations under capitalized leases

18. Bank's liability on acceptances executed and outstanding

19. Notes and debentures subordinated to deposits

20. Other liabilities (from Schedule RC-6)

21. Total liabilities (sum of items 13 through 20)

22. Limited-life preferred stock

23. Perpetual preferred stock

24. Common stock

25. Surplus

26. Undivided profits and capital reserves

27. Cumulative foreign currency translation adjustments

28. a. Total equity capital (sum of items 22 through 27)

b. Losses deferred pursuant to 12 U.S.C. 1823j (from Schedule RC-10)

c. Total equity capital and losses deferred pursuant to 12 U.S.C. 1823j (sum of items 28 a and 28 b)

28.c. 1,091

29. Total liabilities, limited-life preferred stock, equity capital, and losses deferred pursuant to 12 U.S.C. 1823j (sum of items 21, 22, and 28.c)

29. 5,911

Marked Barlett
of the above-named bank do hereby declare that this Report of Condition has been prepared in conformity with the instructions issued by the Board of Governors of the Federal Reserve System and the State Banking Authority and is true to the best of my knowledge and belief.

State of Montana County of Missoula ss
Sworn to and subscribed before me this 14th day of January 1988
Cheryl A. Lewis
Notary Public

THE FINDER

FOR SALE

TOP-QUALITY LARCH FIREWOOD, \$65/cord, split and delivered. 677-2791

RUPP TWINE - Snowcat. \$35.00. Call 677-2368.

1949 DODGE 1-TON, good running condition. Great "wooder." \$400. 677-2080

1 WEEK TIME-SHARE at Double Arrow. 9th week, \$1000.00, sleeps six. Call 251-2698.

1973 14X70 HOLLY PARK MOBILE HOME on rented lot, horse pasture, 2 or 3 bedroom, wood stove, remodeled, excellent cond. \$11,000 O.B.O. 677-2295

1976 SUBARU WAGON, 4x4, 4-speed, 78,000 miles. Great traction! Runs, but needs work. \$500. 677-2808

'72 CHEVY LUV PICKUP. For more info call 677-2306.

ELECTRO-TRAINER (shock collar) like new \$150, 754-2273.

VALENTINE'S DAY GIFTS-order your sweetheart handmade items from Dar's Crafts. Items from \$3 to \$30, 754-2729.

PIZZA!!
Hungry Bear

FOR RENT

3-BEDROOM, 2-BATH MOBILE HOME. Gas & wood heat. \$275.00 plus utilities. \$100.00 cleaning deposit. 677-2404

TWO SMALL COMMERCIAL RETAIL spaces. May be rented as one. First month free. Call 677-2080.

TRAILER LOTS, Seeley Lake (Rich Trailer Court). 677-2467 or P.O. Box 505, Seeley Lake 59868.

CABIN FOR RENT, \$175. Wood and electric heat. Deposit. 677-2433.

WANTED TO RENT

RESPONSIBLE, NON-SMOKING COUPLE w/one child, no pets, seek year-round rent within 14 miles of M/M 60 on Hwy. 83. Exc. ref. Reply to: Box 562, Bigfork, MT 59911

HELP WANTED

RESORT ASSISTANT MANAGER, Part-time, housing provided. 677-2433.

SERVICES

HOW HUNGRY ARE YOU? Try Dominic's all-you-can-eat-and-drink soup and salad bar. Open every day, except Wednesdays, at noon.

PATHFINDER now offers photocopying. Stop by our office at the Timberline Building and ask about our 5¢ copies.

SNOWBLOWER, mounted on 7-1/2 ton 4WD truck. Call 677-2289.

ROOF SNOW SHOVELING. 754-2250

LOST

120 SUPER SACHS DOLMAR CHAINSAW. Lost from truck in Condon area. Call 754-2717.

FEMALE GERMAN SHEPHERD, Shasta has a blue nylon collar, no tags, lost January 17 between Salmon Lake and Bigfork. Reddish tan with a black saddle. Medium size dog. Four years old very friendly. Call collect 892-2870 or 862-6058.

FOUND

OLD TOBOGGAN. Inquire at Pathfinder, 677-2022.

BLONDE, LONG-HAIRED, FEMALE TERRIER-TYPE DOG. Found Sunday, January 10 at Big Larch campground. Call 677-2572.

Senior Nutrition Program

The following noon meals, which are open to the public, will be served next week promptly at noon on Monday, Tuesday and Wednesday at the Seeley Lake Community Hall:

Monday, January 25
Tuna noodle casserole

Tuesday, January 26
Hamburger steak

Wednesday, January 27
Hot beef sandwich

Reservations are appreciated for these meals. Call 677-2008.



THE DRY DOCK Mini Storage
(Downtown & Annex Locations)

Dry & Open Storage
RV Storage
Security Fenced

Various Sized Rental Units
(starting as low as \$15.00/month)

677-2238 677-2438
Seeley Lake

SMA Service Management Associates
"The Dependable Professionals"

Toni Hale Grace LeFebvre

(406) 677-2010

Take Out a Classified Ad in the Finder!

Need to Sell or Buy?
Time for a Garage Sale?
Lost? Found?

Rates (per week): \$1.25 for ten words or less, 10¢ each additional word. Payment must accompany this form. No charge for lost and founds or giveaways.

Name _____ Telephone _____
Street or P.O. Box _____
City _____ State _____ Zip _____

Message: _____

Mail form to: **PATHFINDER**
P. O. Box 702
Seeley Lake
Montana 59868

Or drop off at our office:
Timberline Bldg
Seeley Lake

Payment must accompany ad.

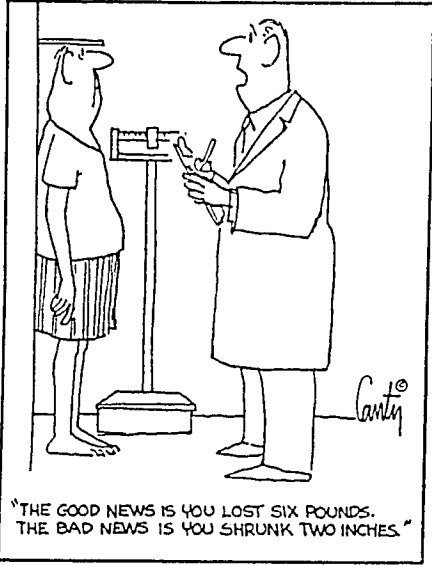
Classified Ad Deadline: 4:00 p.m. Friday

BUSINESS DIRECTORY

<p>ALL WAYS TRAVEL Airlines • Amtrak • Hotels • Cars • Tours</p> <p>Regina & Shannon Bigfork • 837-5411</p> <p>Karen Sheely Seeley Lake • 677-2808</p>	<p>Horse Trail Rides • Summer Youth Camp • River Float Trips Wilderness Pack Trips & Fall Big Game Hunting Old Fashioned Western Barbecues</p> <p>Operated by the Rich Family for over 30 years.</p> <p>DOUBLE ARROW Outfitters Jack or C.B. Rich Box 495 • Seeley Lake, MT 59868 677-2411 or 677-2317</p>	<p>SPLIT RAILS LARGE POLES ROUND RAILS JACKLEG POSTS TREATED POSTS FENCING MATERIALS</p> <p>ALPINE PRODUCTS OF CONDON ALAN CHILDS 754-2725 (MILE MARKER 44)</p>
<p>HIGH COUNTRY PLUMBING & HEATING Licensed Bonded Insured</p> <p>677-2078</p> <p>Locally Owned and Operated</p> <p>Dave Gustin, Master Plumber Box 485 • Seeley Lake • Montana 59868</p>	<p>Happiness is having Larson Disposal</p> <p>Take out the trash...</p> <p>Seeley Lake, Montana 677-2252</p>	<p>SWAN VALLEY CENTRE Condon, Montana 59826</p> <p>Grocery • Laundry Cafe • Auto Service Towing</p> <p>Winter Hours 7 am-8pm, Mon-Sat 8 am-8pm, Sunday</p> <p>Bill & Jo Lynn Mahaffey (406) 754-2397</p>
<p>STATE FARM INSURANCE COMPANIES HOME OFFICES: BLOOMINGTON, ILLINOIS</p> <p>PAUL ZIEMKOWSKI Agent</p> <p>Auto • Life • Fire • Health</p> <p>306 West Broadway Missoula, Montana 59802 Phone: (406) 542-2101</p>	<p>DAN'S DISCOUNT Fishing & Hunting License Agent</p> <p>The Sportsman's 1st Stop in Seeley Lake, Montana The Heart of a Wilderness Paradise</p> <p>Dan & Daisy 406-677-9219</p>	<p>Tiffin Yarns & Crafts Independent Shaklee Distributor</p> <p>754-2389 (Please call before coming)</p> <p>Condon, Mile Marker 38-39</p>

<p>Housekeeping Cabins • Satellite T.V. Game Cooler & Pack Out Service Corral Space Available Day • Week • Month</p> <p>Jerry and Gloria Posthumus Whitetail Cabins (406) 677-2181</p> <p>Located 5 miles north of Seeley Lake on Highway 83 Star Route 503 • Seeley Lake, MT 59868</p>	<p>A-1 Body Works</p> <p>Bob Connell 123 Alder Missoula, MT 59801 (406) 649-0332</p>	<p>Seeley Lake 1-STOP Store</p> <p>Gas & Diesel • Hot & Cold Snacks Beer • Pop • Ice • Movies & VCR Rentals Hunting & Fishing License Agent • Ammunition</p> <p>677-2004 M-F: 6am-11pm • S-S: 7:30am-11pm</p>
<p>D&B Electric, Inc. 677-2773 Don Livingston, Master Electrician 35 Years Experience</p> <p>Residential • Commercial • Industrial</p> <p>Prompt Service • Licensed & Insured</p> <p>P. O. Box 431, Seeley Lake, MT 59868</p>	<p>SEELEY LAKE BUILDERS General Building Contractors Box 59 Seeley Lake, Montana 59868</p> <p>Quality Construction</p> <p>Custom Homes Ted Linford Additions & Remodels 677-2891 Log Homes Decks & Docks Mark Williams Custom Cabinetry 677-2896</p>	<p>Condon Sign Shop 406-754-2273</p> <p>Sign Manufacture Painted Signs • Routered Signs Reflective Road Warning Signs</p> <p>Virginia C. Kessler Boyd J. Kessler SR Box 2640 • Condon, MT 59826</p>
<p>DIANA DONE - BARB DILLREE</p> <p>THE LADIE DI</p> <p>677-2306 7th Haircut FREE</p> <p>T-W-F Th Sat 9:30-6 1-9 10-2</p>	<p>YELLOW ROSE ENTERPRISES General Building Contractor</p> <p>"We take pride in what we build so that you may have pride in what you own."</p> <p>Dave & Nanci Marx Seeley Lake, MT 59868 Box 260 (406) 677-2778</p>	<p>MEYER CONSTRUCTION Box 101, Swan Lake • 754-2250</p> <p>Log Homes • Wood Sheds Polebarns • Remodels • Caulking</p> <p>Also, firewood (larch, pine, fir) See at 1/4 mile south of Van Lake Road</p>
<p>Picture Perfect Frame & Glass</p> <p>Custom Picture Framing Glass Shop</p> <p>677-2680, Seeley Lake</p>	<p>Mountain States CYCLE & Satellite</p> <p>Small Engine Repair Snowmobile Repair Satellite Sales & Service</p> <p>677-2159 Redwood & Spruce Seeley Lake</p>	<p>MECHANIC • TIRE REPAIR We buy used tires...</p> <p>ALL MOTOR FUELS CAR WASH</p> <p>GAS HAUS HIGHWAY 83 N. BOX 573 SEELEY LAKE, MT. 59868 (406) 677-2484</p> <p>MISCELLANEOUS "STUFF" Mon-Fri 6-10 Sat-Sun 8-9</p>

ALL ABOUT TOWN



Terry J. Sheppard

Certified Public Accountant

Ovando - 793-5718

My office is getting into shape for tax season.

Don't wait - see me today!

IRS forms available at SSHS library

You need forms? They've got forms. Nearly every form you might need to prepare your federal income taxes is available through the Seeley-Swan High School library.

Loretta Cooper, high school librarian, recently unpacked several boxes of federal tax forms. Everything from the Small Business Guide to Tax Form Preparation to instructions for equipment depreciation calculation and child care exemptions is now available at the high school library in Seeley Lake.

For more information, contact Loretta Cooper, Seeley-Swan High School, 677-2224. School hours are 8:00 to 3:30, Monday through Friday.



YAMAFEST activities drew quite a crowd, including radio and TV personnel. Ben Troka and Lynda Jordan, from KCFW TV in Kalispell interviewed Donna Porter of Leisure Lodge Resort in Seeley Lake (above).

Gerry Connel did double duty on Saturday. He and his wife, Bonnie, put in shifts as Emergency Medical personnel and also helped keep track of Snodeo events.



Roger Wade Photography

754-2793

Movie & VCR Rentals
(New Movies Weekly)

Nowhere to Hide
Dragnet • Lady Beware

We have the largest selection of movies in the Valley!

GOOD TIMES GENERAL STORE

Located in the Seeley Lake Maul

Seeley Lake, Montana

VALLEY MARKET

One Mile South of Seeley Lake on Scenic 83
Phone 406/677-2121



FOOD Farm

Weekly Specials
January 20 - January 26



Flavor-Crisp
CHICKEN \$4.99
12 Piece Box



CRISCO
SHORTENING
2 Pounds \$2.59

"COST PLUS"
BUY BY THE CASE AND SAVE \$\$\$

Place your order by
Saturday for Wednesday store delivery
and Tuesday for Friday store delivery.
Save as a result of our not having to
mark and stock the product on the shelf.

SAVE \$\$\$

SAVE \$\$\$

Professional Knife Sharpening
by Don, our Meat Department Manager
\$1.00 per Knife

Super-Pak, Homestyle

Archway
COOKIES
reg. \$1.99 \$1.69

Cut, Wrapped & Frozen
to your Specifications

HALF
BEEF